

4

3

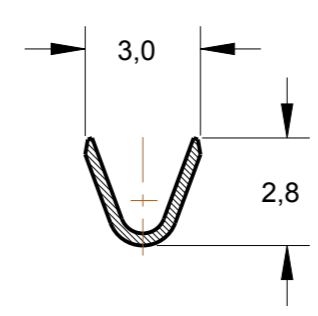
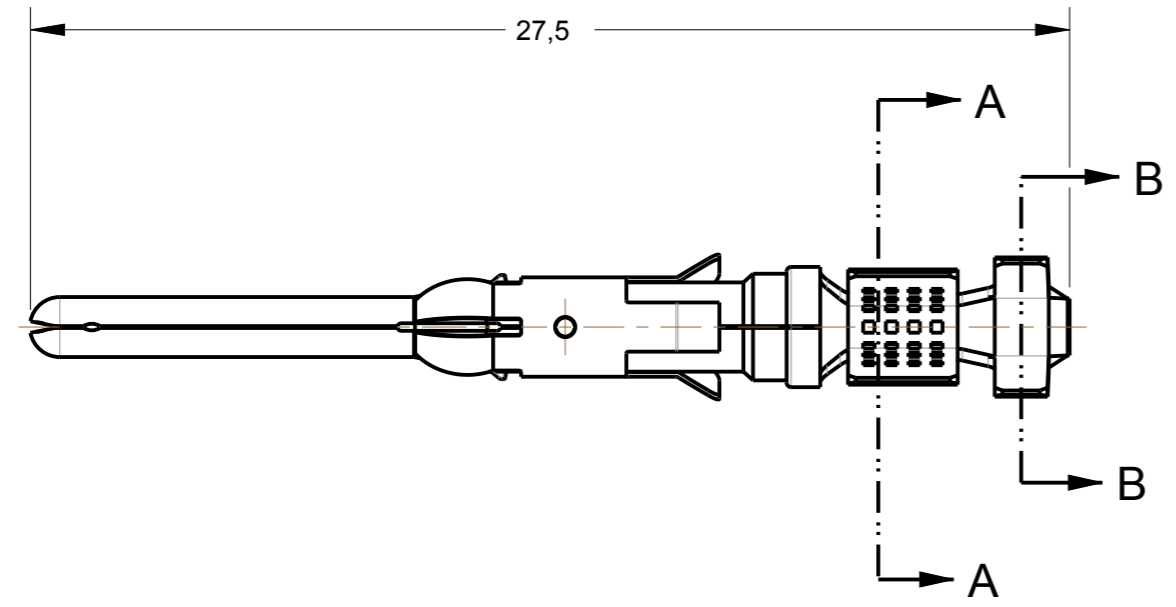
2

1

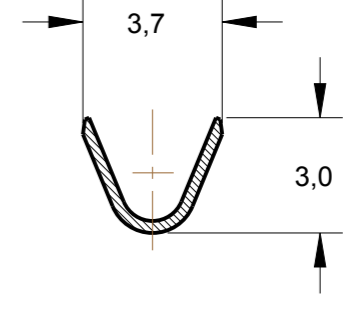
THIS DRAWING IS UNPUBLISHED. RELEASED FOR PUBLICATION 20
 © COPYRIGHT20 BY - ALL RIGHTS RESERVED.

creo
 Creo Parametric 3.0
**DO NOT REVISE
 EXCEPT BY CAD**

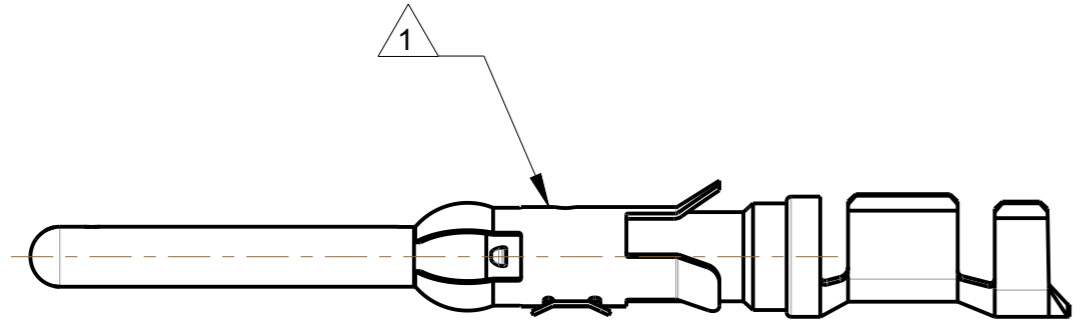
REVISIONS					
P	LTR	DESCRIPTION	DATE	DWN	APVD
	A1	REVISED DRAWING ECO-17-007396	23MAY2017	NCL	DAO



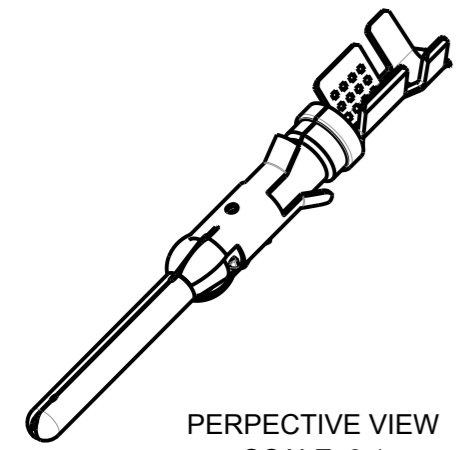
SECTION A-A
SCALE 5:1



SECTION B-B
SCALE 5:1



1 - MOLA DE AÇO INOX
 - SPRING STAINLESS STEEL



PERPECTIVE VIEW
SCALE 3:1

INSUL.RANGE	WIRE RANGE
2,0-2,5mm (.080-.100)	0,75-1,50mm ² (18-16 AWG)

163081-2	DOURADO (SEL.GOLD)	LATÃO / BRASS	881459-2
1-163081-2	PRE ESTANHADO (PRE TIN)	LATÃO / BRASS	881459-1
MAKE FROM(STRIP)		FINISH	MATERIAL
THIS DRAWING IS A CONTROLLED DOCUMENT.		DWN 23MAY2017 NCLAPRESA	 TE Connectivity PIN TYPE III 1.6 DIA TERMINAL LOOSE PIECE
DIMENSIONS: mm		CHK 23MAY2017 ELOPES	
TOLERANCES UNLESS OTHERWISE SPECIFIED:		APVD 23MAY2017 DAOLIVEIRA	
0 PLC ±- 1 PLC ±0,3 2 PLC ±- 3 PLC ±- 4 PLC ±- ANGLES ±1°		PRODUCT SPEC -	
MATERIAL SEE TABLE		FINISH -	APPLICATION SPEC -
-		WEIGHT -	SIZE A3
-		CUSTOMER DRAWING	CAGE CODE -
-		SCALE 5:1	DRAWING NO C-881459
-		SHEET 1 OF 1	RESTRICTED TO -
-		REV A1	

OBSOLETE