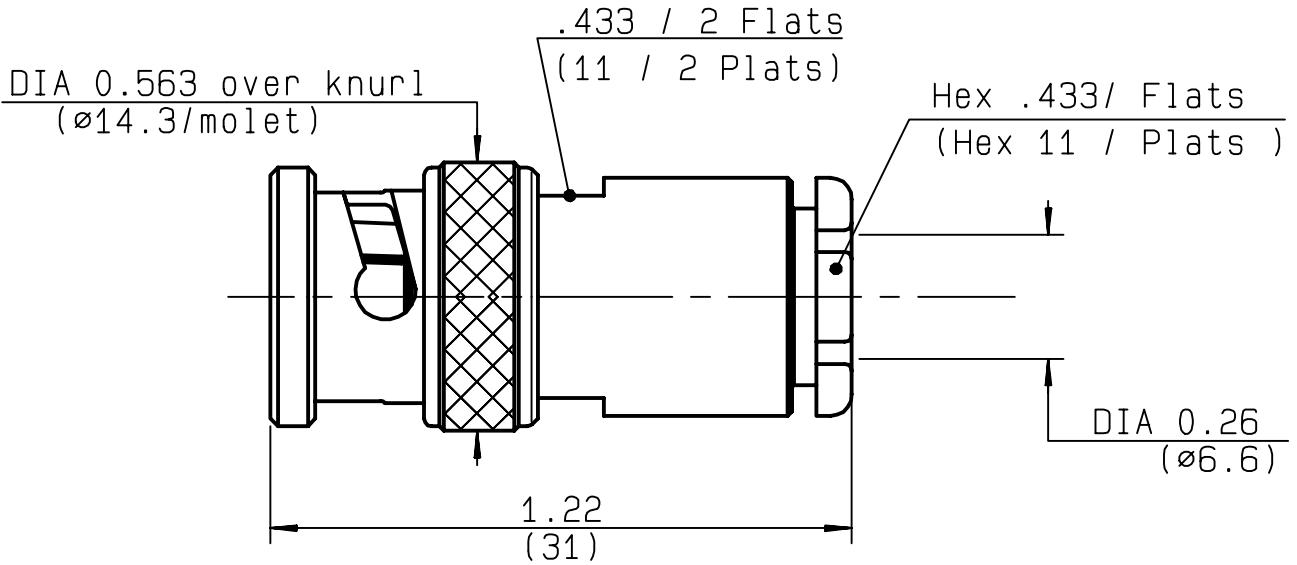


**STRAIGHT PLUG CLAMP TYPE
FOR ARMOUR TWIN AXIS DIA 6 CABLE**

R605.006.020
SERIES BR2



NOMINAL IMPEDANCE	80 Ω	CABLES : FM 2
FREQUENCY RANGE	0-0.5 GHz	
TEMPERATURE RATING	-40/+100 °C	
V.S.W.R	+ x F(GHz)Maxi	
RF INSERTION LOSS	√F(GHz) dB Maxi	
VOLTAGE RATING	TBD Veff Maxi	
DIELECTRIC WITHSTANDING VOLTAGE	1500 Veff Mini	
INSULATION RESISTANCE	5000 MΩMini	
HERMETIC SEAL	Atm.cm ³ /s	
LEAKAGE (pressurized only)	Cycles	
MECHANICAL DURABILITY	gr	OTHERS CHARACTERISTICS
WEIGHT		CABLE RETENTION 91 N Mini
SPECIFICATION		CENTER CONTACT RETENTION
		Axial force - mating end 27 N Mini
		Axial force - opposite end 27 N Mini
		Torque cm.N Mini
		RECOMMENDED TORQUES
		Mating cm.N
		Panel nut cm.N
		Clamp nut 450 cm.N

CONNECTOR PARTS	MATERIALS	FINISH	(all values are given in micrometers)
BODY	BRASS	NICKEL 2	
OUTER CONTACT	BRASS	NICKEL 2	
CENTER CONTACT	BRASS	GOLD 1.3 OVER NICKEL 2.54 OVER COPPER 3	
INSULATOR	POLYAMIDES 11	-	
GASKET		-	
OTHERS PIECES			

ISSUE	CREATION DATE	FILE PART-NUMBER
9743A01	16/01/1996	95-0132-033



LAMBART

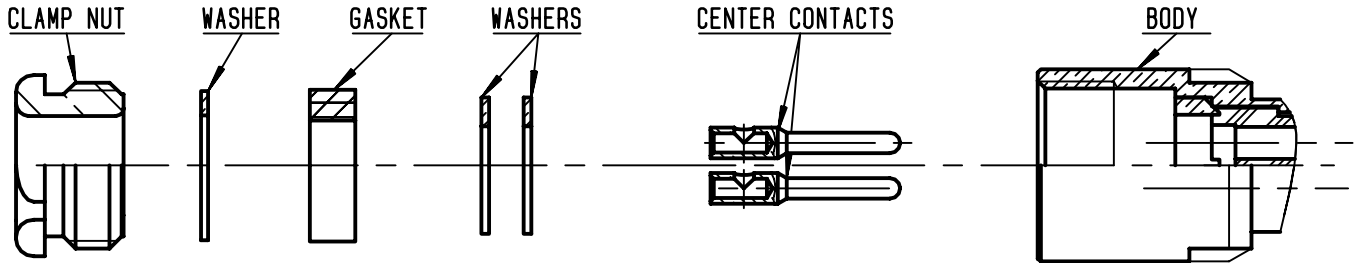
The information given here is subject to change without notice.
Design changes may be in order to improve the product.

Connect to the future



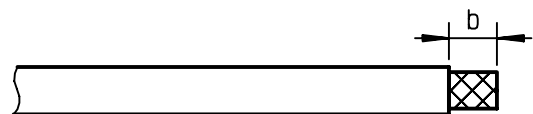
R605.006.020

ISSUE **9743A01** SERIES **BR2**



①

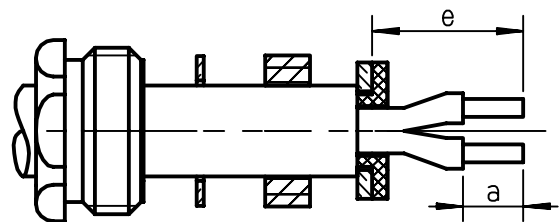
Strip the cable .
-
-



Stripping	a	b	c	d	e
inch	0.157	0.394	0	0	0.354
mm	4	10			9

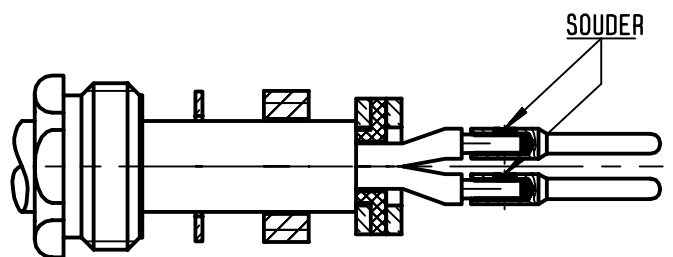
②

Slide the clamp nut, the washer and the gasket onto the cable .
Slide a small washer onto the braid against the jacket.
Fan the braid and cut excess flush to the washer.
Strip the cable dielectric according to dimensions a and e.



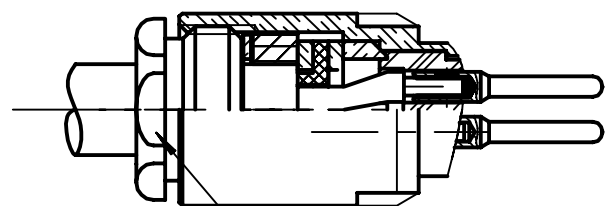
③

Slide the second small washer onto the cable .
Solder center contacts onto cable inner conductors.
-



④

Slide the assembly into the connector body.
Screw the assembly into the connector.
(recommended coupling torque :450 N.cm)
39.82 in.lb



Hex .433 /Flats
(Hex 11 / Plats)