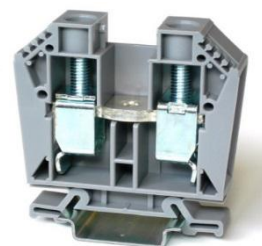


Article: **10134256-001LF**

Feed-through terminal block – Grey

Screw connection - 50mm² / 1/0AWG - Width 16 mm**GENERAL DATA**

| | |
|--------------|-------------------|
| Series | EURO 35-50 |
| Item | 10134256 |
| Weight/Piece | 56 g |
| Colour | Grey |
| Q.ty p.pck. | 25 |
| Q.ty p. box | 400 |

TECHNICAL DATA / DIMENSIONS**Dimensions**

| | |
|--------------------------|------------|
| Width mm(in.) | 16 (0.63) |
| Length mm(in.) | 62 (2.44) |
| Height mm(in.) | 61 (1.93) |
| Mounting type (EN 60715) | Omega TH35 |

Technical data

| | |
|---|-------|
| Maximum load current | 150A |
| Insulating material | PA 66 |
| Self-extinguishing degree acc. to UL94 | V2 |
| Rated surge voltage | 8kV |
| Pollution degree | 3 |
| Surge voltage category | III |
| Insulating material group | I |
| Nominal Voltage | 1000V |
| Nominal Current | 150A |
| Temperature index, insulating material – Elec. UL 746 B - RTI | 130°C |
| Static insulating material lower permissible temperature | -60°C |

Connection data

| | |
|---|------------------------------|
| Conductor cross-section solid min/max | 2,50 / 50 mm ² |
| Conductor cross-section stranded min/max | 2,50 / 50 mm ² |
| AWG min/max | 14-1/0AWG |
| Max conductor cross-section stranded with ferrule with plastic sleeve | 35 mm ² / L=18 mm |
| Stripping length | max 17mm |

| | |
|-------------------|-------------------------|
| Screw | M6 – Zinc plated steel |
| Tightening torque | 2.5Nm / 45 Lb-In |
| Clamp | Zinc plated steel |
| Current bar | Tin Plated copper alloy |

APPROVALS



RINA

EN60947-7-1

50mm² – 1000V – 150A

EN60068-2-11

Salt mist test for 96 hours



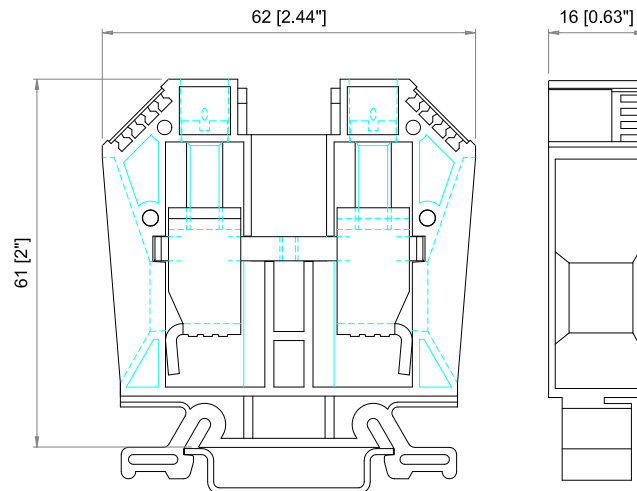
UL1059

SCCR

100kA

AWG 14-1/0 – 600V – 130A

TECHNICAL DRAWINGS



ACCESSORIES

Marking

| Item | Description |
|--|---|
| 10134398-001LF | Single-digit marking tag (5 x 3 mm) - white |
| 10134398-002LF ~ 10134398-011LF | Single-digit marking tag (5 x 3 mm) – with marking: 0 ~ 9 |
| 10134398-012LF ~ 10134398-036LF | Single-digit marking tag (5 x 3 mm) – with marking: A ~ Z |
| 10134399-001LF | Marking tag adapter – 6 slots for marking tags |
| 10134400-001LF | Marking tags (5 x 12 mm) - white (special marking on request) |
| 10134401-001LF | Marking tags (6 x 12 mm) - white (special marking on request) |
| 10134449-001LF | Tags 6x12mm (39tags x 20cards) |

DIN RAIL system - Mounting and Installation material

| Item | Description |
|-----------------------|--|
| 10134392-001LF | Steel Omega rail 35/7,5mm - 2mt length |
| 10134393-001LF | Slotted steel Omega rail 35/7,5mm - 2mt length |
| 10134394-001LF | Steel Omega rail 35/15mm - 2mt length |
| 10134395-001LF | Slotted steel Omega rail 35/15mm - 2mt length |
| 10134387-001LF | Angled support bracket |
| 10134389-001LF | EURO STOP - End bracket width 9 |
| 10134390-001LF | EURO STOP - End bracket width 6 |
| 10134391-001LF | EURO STOP - Snap-on end bracket width 6 |

Additional items

| Item | Description |
|-----------------------|---|
| 10134262-001LF | End plate |
| 10134270-001LF | Cover for EURO 16-25 |
| 10134267-001LF | Jumper bar (0,5m+31screws) for EURO 35-50 |