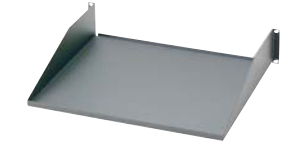


Rack Mount Shelves

- Load ratings up to 250 lbs. refer to part descriptions for specific load ratings



SRM19FM2



SRM19CMV3



SRM19X18A1

Part Number	Part Description	No. of Rack Spaces [^]	Std. Pkg. Qty.
SRM19FM1	19" front mount shelf, steel. Dimensions: 1.7"H x 19.0"W x 15.2"D (44mm x 483mm x 385mm). Load rating 30 lbs.	1	1
SRM19FM2	19" front mount shelf, steel. Dimensions: 3.5"H x 19.0"W x 15.2"D (88mm x 483mm x 385mm). Load rating 50 lbs.	2	1
SRM19CMV3	19" cantilevered shelf, vented aluminum. Includes two-piece shelf that mounts to front and back of EIA racks. Dimensions: 5.2"H x 19.2"W x 12.5"D (133mm x 489mm x 316mm). Load rating 200 lbs.	3	1
SRM19CM3	19" cantilevered shelf, aluminum. Includes two-piece shelf that mounts to front and back of EIA racks. Dimensions: 5.2"H x 19.2"W x 12.5"D (133mm x 489mm x 316mm). Load rating 200 lbs.	3	1
SRM19X18A1	19" adjustable mount shelf, steel, mounts to front and back of EIA racks. Dimensions: 1.8"H x 19.0"W x 18.0"D (44mm x 483mm x 457mm). Load rating 250 lbs.	1	1
SRM19X25A1	19" adjustable mount shelf, steel, mounts to front and back of EIA racks. Dimensions: 1.8"H x 19.0"W x 25.0"D (44mm x 483mm x 635mm). Load rating 250 lbs.	1	1

[^]One rack space = 1.75" (44.45mm).
All product color is black.

Panel Extender Brackets

- Allow for mounting 19" product on 23" standard EIA racks or cabinets
- Offset bracket design maintains flush mounting of panels
- Mounting hardware included



PEB1



PEB2

Part Number	Part Description	No. of Rack Spaces [^]	Std. Pkg. Qty.	Std. Ctn. Qty.
PEB1	Converts 19" horizontal panels to 23" panels.	1	1	10
PEB2	Converts 19" horizontal panels to 23" panels.	2	1	10

[^]One rack space = 1.75". (44.45mm).
All product color is black.