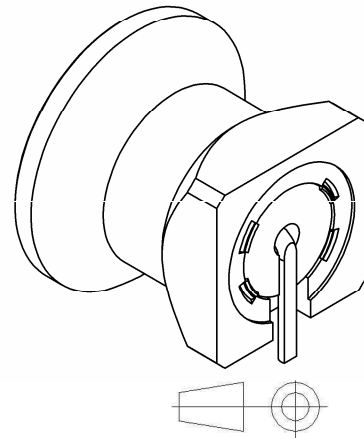
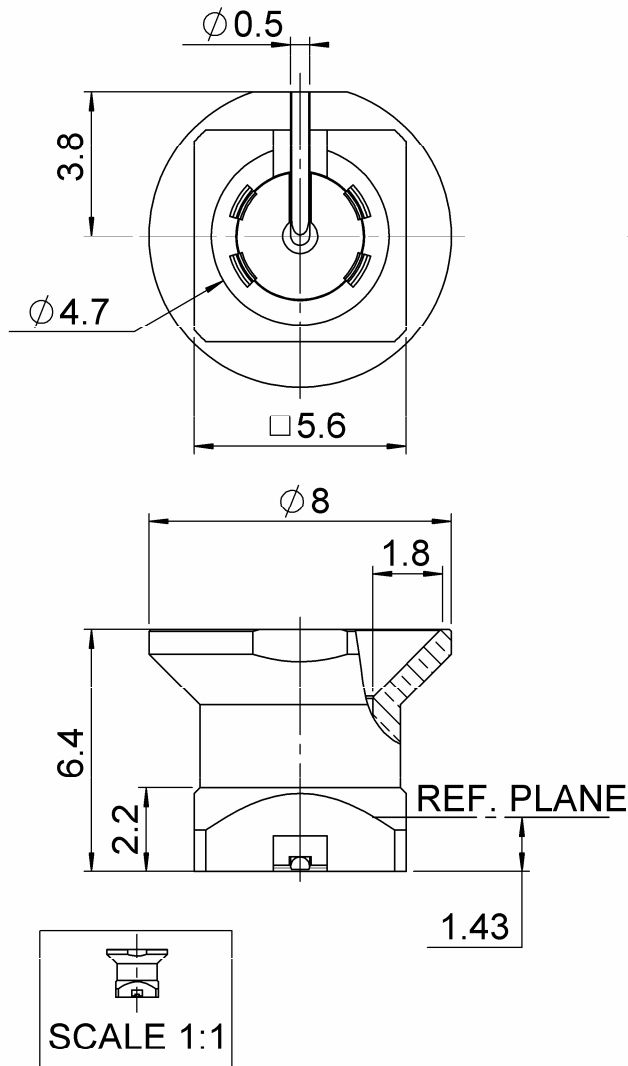


STRAIGHT MALE RECEPTACLE FOR SMT
SLIDE TYPE - REEL OF 500
R222.M00.700

Series : SMP-MAX



All dimensions are in mm.

COMPONENTS	MATERIALS	PLATING (μm)
BODY	BRASS	NPGR
CENTER CONTACT	BRASS	NPGR
OUTER CONTACT		
INSULATOR	PEEK	
GASKET		
OTHERS PARTS		
-	-	-
-	-	-

Issue : 1129 B

In the effort to improve our products, we reserve the right to make changes judged to be necessary.

RADIAL 

STRAIGHT MALE RECEPTACLE FOR SMT**R222.M00.700****SLIDE TYPE - REEL OF 500**Series : **SMP-MAX****PACKAGING**

Standard	Unit	Other
500	-	Contact us

SPECIFICATION**ELECTRICAL CHARACTERISTICS**

Impedance	50	Ω
Frequency	0-6	GHz
VSWR	1.25* + 0,0000	x F(GHz) Maxi
Insertion loss	0.15*	$\sqrt{F}(\text{GHz})$ dB Maxi
RF leakage	- (NA)	- F(GHz)) dB Maxi
Voltage rating	335	Veff Maxi
Dielectric withstanding voltage	500	Veff mini
Insulation resistance	1000	M Ω mini

ENVIRONMENTAL

Operating temperature	-55/+165	$^{\circ}\text{C}$
Hermetic seal	NA	Atm.cm3/s
Panel leakage	NA	

OTHER CHARACTERISTICSAssembly instruction **NA**

Others :

* VSWR: up to 3GHz; 3-6 GHz, 1.35 max

*Coaxial Transmission Line Only

*Slide type receptacle+Bullet+Snap type receptacle

Typical VSWR(Board to Board connection):

0-3GHz, 1.2max

Power handling (typical) :

>300W@2.7GHz at 25°C: >200W@2.7GHz at 85°C

Radial working angle: 3°min

Axial working range: 2mm

MECHANICAL CHARACTERISTICS

Center contact retention	
Axial force – Mating end	7 N mini
Axial force – Opposite end	7 N mini
Torque	NA N.cm mini

Recommended torque	
Mating	NA N.cm
Panel nut	NA N.cm

Mating life	100 Cycles mini
Weight	0,8490 g

Issue : 1129 B

In the effort to improve our products, we reserve the right to make changes judged to be necessary.

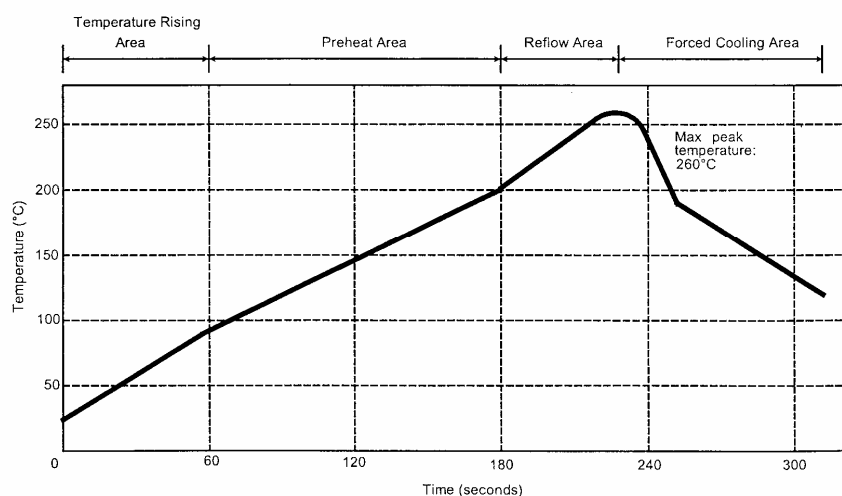
RADIAL 

STRAIGHT MALE RECEPTACLE FOR SMT**SLIDE TYPE - REEL OF 500****R222.M00.700**

Series : SMP-MAX

SOLDER PROCEDURE

1. Deposit solder paste 'SnAg4Cu0.5' on mounting zone by screen printing application. We recommend a low residue flux.
We advise a thickness of 150 micromm (5.850 microinch). Verify that the edges of the zone are clean.
2. Placement of the receptacle on the mounting zone with an automatic machine of 'pick and place' type. A video camera is recommended for positioning of the component . Adhesive agents must not be used on the receptacle.
3. This process of soldering has been tested with convection oven .Below please find ,the typical profile to use.
4. The cleaning of printed circuit boards is not obliged .
5. Verification of solder joints and position of the component by visual inspection.

TEMPERATURE PROFILE

Parameter	Value	Unit
Temperature rising Area	1 - 4	°C/sec
Max Peak Temperature	260	°C
Max dwell time @260°C	10	sec
Min dwell time @235°C	20	sec
Max dwell time @235°C	60	sec
Temperature drop in cooling Area	-1 to - 4	°C/sec
Max dwell time above 100°C	420	sec

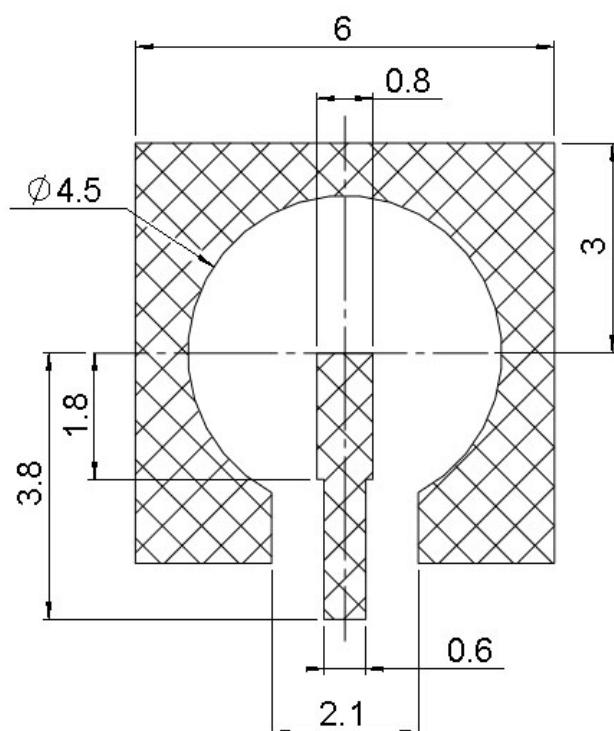
Issue : 1129 B

In the effort to improve our products, we reserve the right to make changes judged to be necessary.

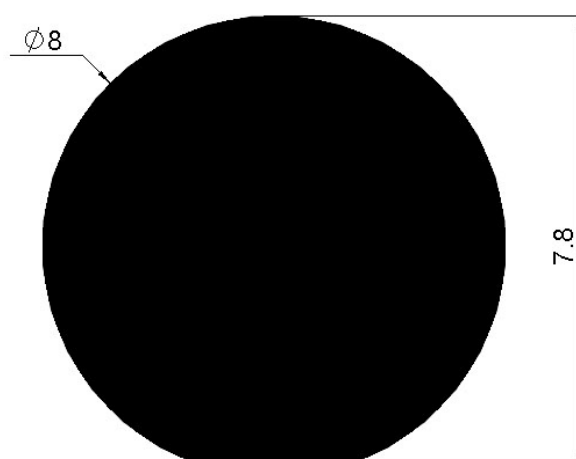
RADIAL 

STRAIGHT MALE RECEPTACLE FOR SMT**SLIDE TYPE - REEL OF 500****R222.M00.700**

Series : SMP-MAX

PCB LAYOUT

Lands for solder paste

Shadow of receptacle for video camera**Issue : 1129 B**

In the effort to improve our products, we reserve the right to make changes judged to be necessary.

RADIAL

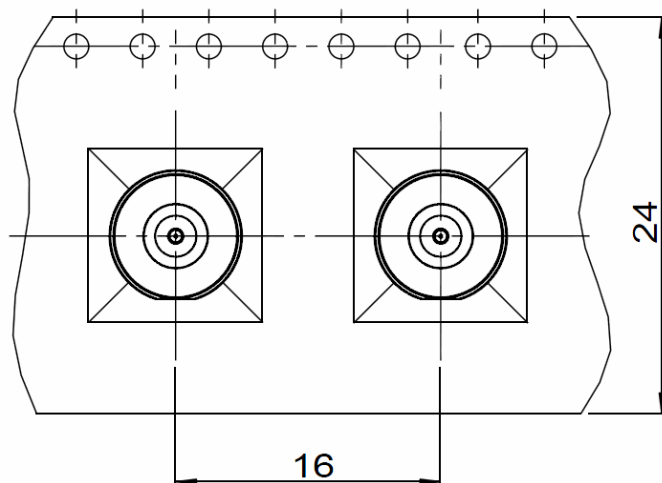
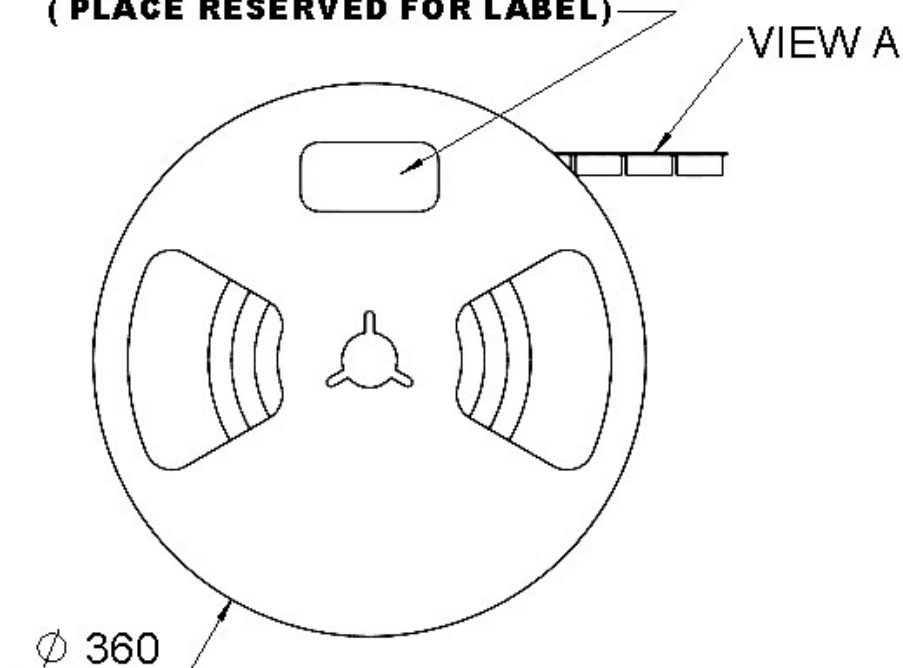
STRAIGHT MALE RECEPTACLE FOR SMT

SLIDE TYPE - REEL OF 500

R222.M00.700

Series : SMP-MAX

**EMPLACEMENT RESERVE POUR
L' ETIQUETTE
(PLACE RESERVED FOR LABEL)**



VIEW A

Issue : 1129 B

In the effort to improve our products, we reserve the right to make changes judged to be necessary.

RADIAL 