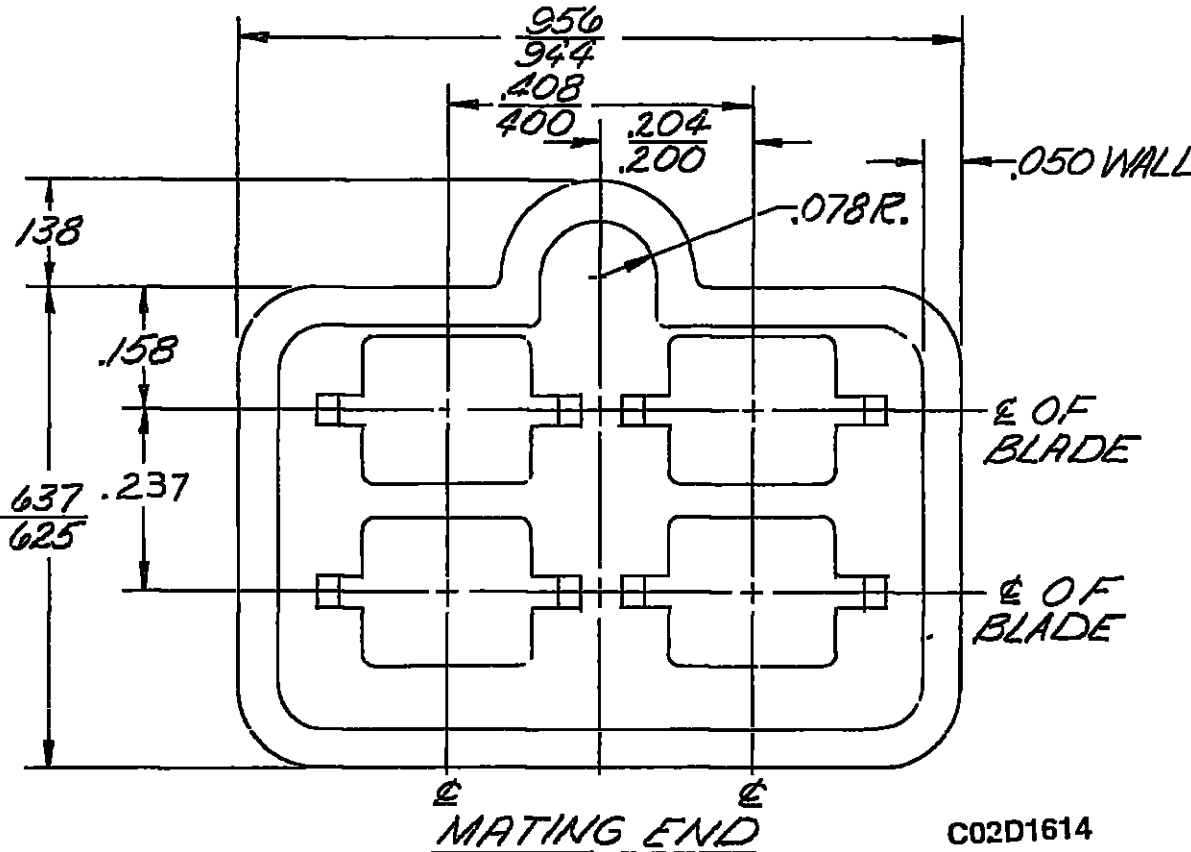
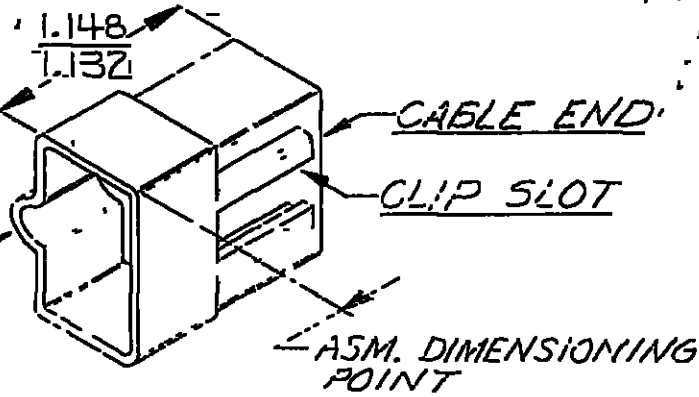


PACKARD ELECTRIC DIVISION
 GENERAL MOTORS CORPORATION
 WARREN, OHIO
 30-90-10744
 304
 311
 DRD-V
 TR-V
 CHEV-H
 OSN-A
 AM-P-A
 99
 63-R
 74-R
 300-R
 330-R
 350-R
 552-R
 PEBA
 REC-12-2252-R
 2274-R

DO NOT SCALE

THIS DRAWING AND DESIGN HEREON CONSTITUTES PROPRIETARY DESIGN OF PACKARD ELECTRIC DIVISION AND IS NOT TO BE DUPLICATED OR REPRODUCED WITHOUT AUTHORITY OF PACKARD ELECTRIC DIVISION



NOTE:

- THIS CONNECTOR BODY USE '56 SERIES MALE TERMINALS
- MATING FEMALE CONNECTOR BODY - 02962969 REF.
- MATERIAL RECYCLING CODE PER ISO 11469. (.100) X (.010) RAISED CHARACTERS AS SHOWN TO BE LOCATED ON ANY EXTERIOR SURFACE. OPTIONAL CONSTRUCTION TO BE NO MATERIAL RECYCLING CODE.
- (.100) X (.010) RAISED DELPHI CORPORATE BRAND TO BE LOCATED ON ANY EXTERIOR SURFACE, PREFERABLY VISIBLE AT FINAL ASSEMBLY. OPTIONAL CONSTRUCTION TO BE "PED" OR NO LOGO.

OUTLINE DWG.

PART NO		2973603		SIZE	A
DATE	SYM	REVISION RECORD	C/N NO		
9-7-61	∞	A' SIZE OUTLINE DWG.	5712		
		ISSUED TO SUPPLEMENT "C" SIZE			
		DETAIL DWG.			
9-7-71	∞	MATL WAS CYCLOCAC (BLK.), REF. WAS 2973604-C & ASM. DIM. PT. RELOCATED	43721		
4-19-73	∞	MATL SPEC REVISED	49146		
CODENO		6900		TOLERANCE UNLESS OTHERWISE SPECIFIED	
				DECIMAL ±.005	
				FRACTIONAL	
				ANGULAR	
DWG DATE	SCALE	DR	K. COPE		
9-12-61	NONE	CK	Pearce 9-13		
ROUTING		APPR			
DEPT		APPR			
OUTST		APPR			
REFERENCE		APPR	R.E. Kirk 9-14		
2973604-D					
MATERIAL SPEC				CODE NO	
NAME					
CONN. BODY - '56 SERIES - 4 MALE TERMINALS					
PART NO				SIZE	
2973603				A	