

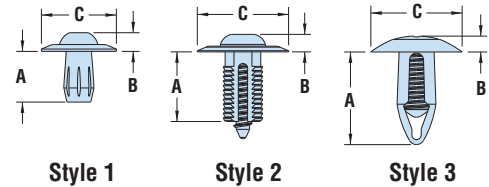


## HEYClip™ Unscrewing Snap Rivets

WILL FIT THESE PANELS						PART NO.	DESCRIPTION	PART DIMENSIONS						STYLE
MOUNTING HOLE DIA.		ASSEMBLED PANEL THICKNESS						A Length	B Head Height	C Head Diameter				
in.	mm.	Min. in.	Max. in.	Min. mm.	Max. mm.					in.	mm.			
<b>HUSR Series</b>													1	
.197	5,0	.059	1,5	.236	6,0	<b>4330</b>	HUSR 197-158	.43	11,0	.15	3,9	.47		12,0
.236	6,0	.059	1,5	.236	6,0	<b>4331</b>	HUSR 236-059	.43	11,0	.15	3,9	.63		16,0
.315	8,0	.118	3,0	.394	10,0	<b>4332</b>	HUSR 315-118	.55	14,0	.16	4,0	.79		20,0
		.276	7,0	.315	8,0	<b>4333</b>	HUSR 315-276	.80	20,3	.14	3,6	.79	20,0	3

Standard color black.

- Phillips head screw driver required for removal.

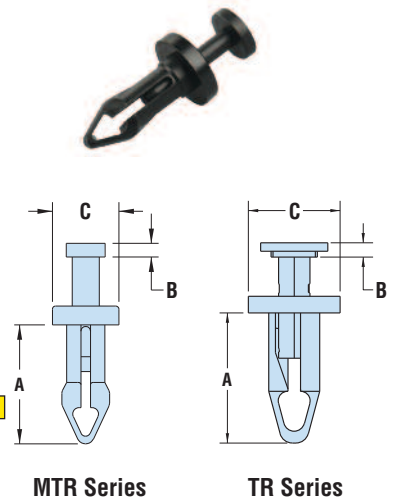


## HEYClip™ Tough Rivets

WILL FIT THESE PANELS								PART NO.	DESCRIPTION	PART DIMENSIONS					
MOUNTING HOLE DIAMETER				ASSEMBLED PANEL THICKNESS						A Length Below Panel	B Head Height	C Head Diameter			
Minimum in.	Maximum mm.	Minimum in.	Maximum mm.	Minimum in.	Maximum mm.	Minimum in.	Maximum mm.					in.	mm.		
<b>Mini - MTR Series</b>															
.122	3,1	.128	3,3	.155	3,9	.180	4,6	<b>12475</b>	MTR 180-125	.37	9,4	.05	1,3	.22	5,5
.144	3,7	.154	3,9	.265	6,7	.290	7,4	<b>12477</b>	MTR 290-150	.47	11,9	.05	1,3	.30	7,6
<b>Standard - TR Series</b>															
.193	4,9	.205	5,2	.059	1,5	.181	4,6	<b>12466</b>	TR 181-199	.45	11,3	.08	2,1	.28	7,2
.250	6,4	.276	7,0	.098	2,5	.315	8,0	<b>12468</b>	TR 315-263	.90	22,8	.11	2,8	.59	15,0
.315	8,0	.325	8,3	.118	3,0	.315	8,0	<b>12469</b>	TR 315-320	.83	21,1	.09	2,3		

Standard color black.

ALL NEW!



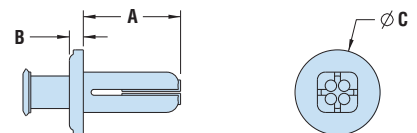
## Heyco® Removable Rivets

WILL FIT THESE PANELS				PART NO.	DESCRIPTION	PART DIMENSION					
Mounting Hole Diameter		Assembled Panel Thickness				A Length Below Panel	B Head Height	C Head Diameter			
in.	mm.	in.	mm.					in.	mm.	in.	mm.
.188	4,8	.062	1,6	<b>12220</b>	HRR 062-188	.50	12,7	.07	1,8	.38	9,5
		.125	3,2	<b>12221</b>	HRR 125-188						
.250	6,4	.062	1,6	<b>12222*</b>	HRR 062-250	.50	12,7	.07	1,8	.44	11,1
		.125	3,2	<b>12223</b>	HRR 125-250						
		.187	4,7	<b>12224</b>	HRR 187-250						

Standard color natural.

\*Will also fit .210”/.218” square hole (for Darling Shelves).

- Two-piece rivet can be removed by retracting the pin then the body.
- Slot in line with pin for pin removal with small screw driver, fingernail or other sharp edge underneath the head of the pin.



	HUSR & HRR	MTR	TR
Material	Nylon 6/6	Heat stabilized Nylon 6	Nylon 6/6
Flammability Rating	94V-2	94 V-2	94HB
Temperature Range	32°F (0°C) to 185°F (85°C)	32°F (0°C) to 230°F (110°C)	32°F (0°C) to 230°F (110°C)