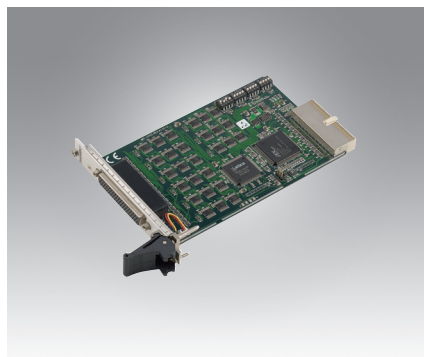


# MIC-3753 MIC-3756 MIC-3758

72-CH Digital I/O 3U CompactPCI® Card

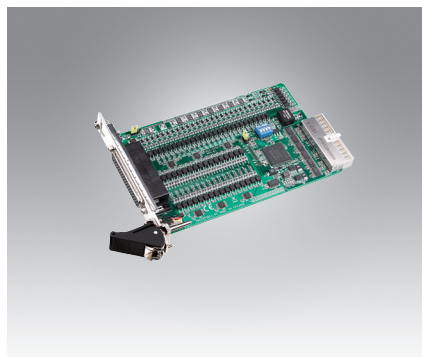
64-ch Isolated Digital I/O CPCI Card

128-CH Isolated Digital I/O 3U CompactPCI® Card

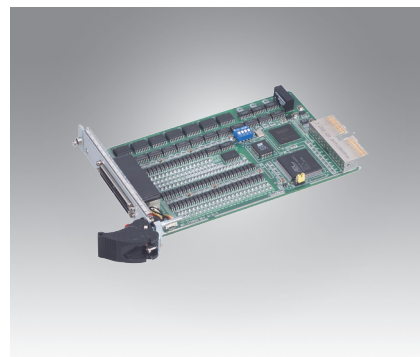


MIC-3753R/3

MIC-3753/3



MIC-3756



MIC-3758/3



## Specifications

### Digital Input

- Channels 72 (shared with output)
- Compatibility 5 V/TTL
- Input Voltage Logic 0: 0.8 V max.  
Logic 1: 2.0 V min.
- Interrupt Capable Ch. 6 (2 for each C port)

### Digital Output

- Channels 72 (shared with input)
- Compatibility 5 V/TTL
- Output Voltage Logic 0: 0.44 V max. @ 24 mA  
Logic 1: 3.76 V min. @ 24 mA
- Output Capability Sink: 0.44 V max. @ 24 mA  
Source: 3.76 V min. @ 24 mA

### General

- PICMG Compliance CompactPCI V2.0, R 2.1  
Hot-Swap V2.1, R 2.0
- Bus Type CompactPCI
- I/O Connectors 1 x 78-pin D-type female connector
- Dimensions (L x H) 160 x 100 mm (6.9" x 3.9") with 3U Bracket
- Power Consumption Typical: +5 V @ 400 mA  
Max.: +5 V @ 0.7 A
- Operating Temperature 0 ~ 60 °C (32 ~ 140 °F) (refer to IEC 68-2-1, 2)
- Operating Humidity 5 ~ 95% RH, non-condensing (refer to IEC 68-2-3)
- Storage Temperature -20 ~ 70 °C (-4 ~ 158 °F)
- Certifications CE

## Ordering Information

- MIC-3753/3-A1E 3U CompactPCI 72-ch Digital I/O card
- MIC-3753R/3-AE 3U CompactPCI 72-ch Digital I/O card with Rear I/O support
- PCL-10178-1E DB-78 cable assembly, 1 m
- ADAM-3978-AE DB-78 wiring terminal for DIN-rail mounting

## Specifications

### Isolated Digital Input

- Channels 32
- Input Voltage Logic 0: 3 V max.  
Logic 1: 10 V min. (50 V max.)
- Interrupt Capable 2 (DI00, DI16)
- Isolation Protection 2,500 V<sub>DC</sub>
- Opto-Isolator Response 100 μs
- Input Current 24 V<sub>DC</sub> @ 4.40 mA (typical)

### Isolated Digital Output

- Channels 32
- Output Type Sink (NPN)
- Isolation Protection 2,500 V<sub>DC</sub>
- Output Voltage 5 ~ 40 V<sub>DC</sub>
- Sink Current 200 mA max./channel
- Opto-Isolator Response 25 μs

### General

- Bus Type CompactPCI
- I/O Connectors 1 x 78-pin D-type female connector
- Dimensions (L x H) 160 x 100 mm (6.9" x 3.9") with 3U Bracket
- Power Consumption Typical: 5 V @ 285 mA  
Max: 5 V @ 475 mA
- Operating Temperature 0 ~ 60 °C (32 ~ 140 °F) (refer to IEC 68-2-1, 2)
- Operating Humidity 5 ~ 95% RH, non-condensing (refer to IEC 68-2-3)
- Storing Temperature -20 ~ 80 °C (-4 ~ 158 °F)
- Certifications CE

## Ordering Information

- MIC-3756-BE 3U 64-channel isolated digital I/O Card

### Accessories

- PCL-10178-1E DB-78 cable assembly, 1 m
- ADAM-3978-AE DB-78 wiring terminal for DIN-rail mounting

## Specifications

### Isolated Digital Input

- Channels 64
- Input Voltage Logic 0: 2.5 V max.  
Logic 1: 5 V min. (25 V max)
- Interrupt Capable Ch. 64
- Isolation Protection 2,500 V<sub>DC</sub>
- Opto-Isolator Response 50 μs
- Input Resistance 3 kΩ

### Isolated Digital output

- Channels 64
- Output Type Sink (NPN)
- Isolation Protection 2500 V<sub>DC</sub>
- Output Voltage 5 ~ 40 V<sub>DC</sub>
- Sink Current 90 mA max./Channel
- Opto-isolator Response 50 μs

### General

- Bus Type CPCI bus spec. 2.1 compliant
- I/O Connectors 1 x MINI-SCSII HDRA-E100 Female
- Dimensions (L x H) 160 x 100 mm (6.9" x 3.9") with 3U Bracket
- Power Consumption Typical: +5 V @ 800 mA, +3.3 V @ 600 mA  
Max: +5 V @ 1 A, +3.3 V @ 1 A
- Operating Temperature 0 ~ 60 °C (32 ~ 140 °F) (IEC 68-2-1,2)
- Storage Temperature -20°~ 70 °C (-4°~ 158 °F)
- Storage Humidity 5 ~ 95% (IEC 68-2-3) non-condensing

## Ordering Information

- MIC-3758/3-AE 3U CompactPCI 128-ch isolated Digital I/O card
- PCL-101100S-1E 100-pin SCSI Cable, 1 m
- ADAM-39100-BE 100-pin SCSI wiring terminal, DIN-rail mounting