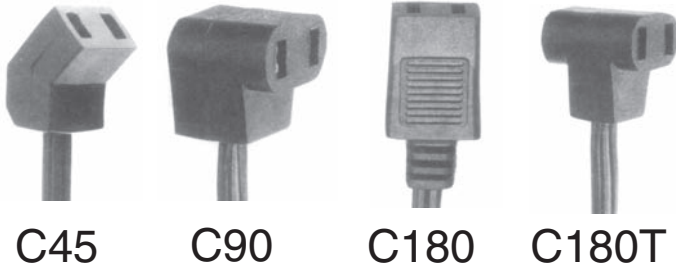


Fan Cords & Daisy Chains



C45 C90 C180 C180T

SPT-1, 2x 18AWG, 105C

Example: 3-head daisy chain with a 72 inch lead and an AC plug.

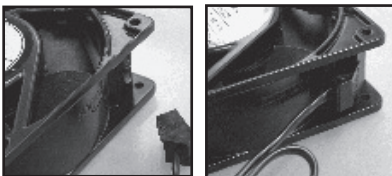
Head Style	Number of Heads	Lead Length	Termination
C45 -	3DC -	72	P
C45 = 45 deg. C90 = 90 deg. C180 = straight C180T = "T" shaped	blank = 1 2DC = 2 3DC = 3 4DC = 4 6DC = 6 9DC = 9	Lead length in inches. 12" increment is standard for stock product.	blank = blunt cut ST = Stripped and Tinned P = NEMA 1-15 AC plug added EURO = European plug

DAISY CHAINS...



permit multiple connections of fans to a single power source. Product is available from stock in 2, 3, 4, 6 and 9 head configurations with lead lengths ranging from 12"-12'. Each head is separated by 12" of cord'. Standard

product is blunt cut, but cords are usually available with AC plugs on request for an additional charge.



FANS WITH TERMINALS MAKE CONNECTING AND DISCONNECTING POWER A BREEZE.



European plug



NEMA 1-15 AC plug

STOCKED CORDS

PART NUMBER	FEATURES
12 INCH LEAD	
C45-12	
C90-12	
C180-12	Standard cord, blunt cut, one head
C180T-12	
24 INCH LEAD	
C45-24	Standard cord, blunt cut, one head
C45-24P	AC plug added
C45-2DC-24	2-head daisy chain
C45-3DC-24	3-head daisy chain
C45-4DC-24	4-head daisy chain
C45-6DC-24	6-head daisy chain
C45-9DC-24	9-head daisy chain
C90-24	
C180-24	Standard cord, blunt cut, one head
C180T-24	
36 INCH LEAD	
C45-36	
C90-36	
C180-36	Standard cord, blunt cut, one head
C180T-36	
48 INCH LEAD	
C45-48	Standard cord, blunt cut, one head
C45-48P	AC plug added
C90-48	
C180-48	Standard cord, blunt cut, one head
C180T-48	
72 INCH LEAD	
C45-72	Standard cord, blunt cut, one head
C45-72P	AC plug added
C45-3DC-72P	3-head daisy chain, AC plug added
C90-72	Standard cord, blunt cut, one head
C90-72P	AC plug added
C180-72	
C180T-72	Standard cord, blunt cut, one head
144 INCH LEAD	
C45-144	Standard cord, blunt cut, one head
C45-144P	AC plug added
C45-2DC-144P	2-head daisy chain, AC plug added
C90-144P	AC plug added