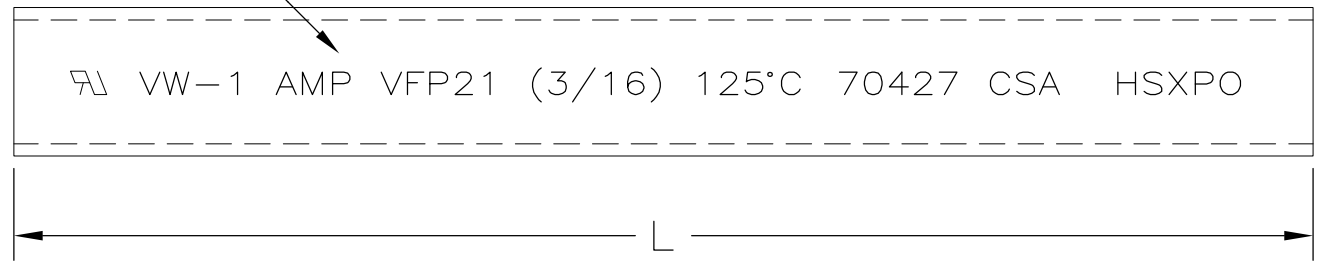
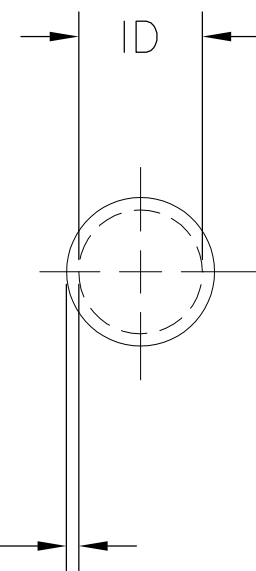


1

4.76 [.187] MINIMUM EXPANDED  
2.38 [.093] MAXIMUM RECOVERED



0.51 [.020] NOMINAL WALL THICKNESS FULLY RECOVERED



REVISIONS		
LTR	DESCRIPTION	DATE
W	REVISED PER DCR NO R060225	10/13/2006
W1	REVISED PER ECO-09-021510	12SEP09

5	OBSELETE	YES	75.0 ± .05 [2.95 ± .002]	2-603325-6
		NO	76.2 ± <sub>0.0</sub> <sup>0.3</sup> m [250 ± <sub>0</sub> <sup>1</sup> ft]	2-603325-5
		YES	76.2 ± <sub>0.0</sub> <sup>0.3</sup> m [250 ± <sub>0</sub> <sup>1</sup> ft]	2-603325-4
		NO	22.4 ± 1.6 [.88 ± .06]	2-603325-0
	OBSELETE	YES	152.4 ± <sub>0.0</sub> <sup>0.3</sup> m [500 ± <sub>0</sub> <sup>1</sup> ft]	1-603325-4
		NO	1219.2 ± <sub>00.0</sub> <sup>25.4</sup> [48.00 ± <sub>0.00</sub> <sup>1.00</sup> ]	1-603325-1
		YES	304.8 ± 6.3 [12.00 ± .25]	603325-4
		YES	12.7 ± <sub>0.0</sub> <sup>1.6</sup> [.50 ± .06]	603325-3
		YES	1219.2 ± <sub>00.0</sub> <sup>25.4</sup> [48.00 ± <sub>0.00</sub> <sup>1.00</sup> ]	603325-1
		MARKING	LENGTH L	PART NUMBER

- ALL VFP21 PRODUCTS ARE MARKED USING WHITE INK ON SURFACE INDICATED
- TUBING FP21 IS UNMARKED AND COMPLIES TO AMS-DTL-23053/5, CLASS 1.
- WEIGHT PER LINEAR FOOT/304.8 mm:  
1.44 g/.003 lbs.
- MATERIAL: BLACK POLYOLEFIN

5 OBSOLETE PARTS: OBSOLETE CIS STREAMLINING PER D.RENAUD/D.SINISI

### SPECIFICATION CONTROL DRAWING

UNLESS OTHERWISE SPECIFIED DIMENSIONS ARE IN mm. INCH DIMENSIONS ARE IN BRACKETS.  DECIMALS .XX ± .01 [.0004 in] .X ± .1 [.004 in] ANGLES .X ± 0.5 DEG	DRAWN UNGUYEN	DATE 10/13/2006	Tyco Electronics Corporation 300 Constitution Drive Menlo Park, CA, USA 94025 	
	RPN	CAD NAME R060225	TITLE AMPSULATION VFP21 AND FP21 3/16 INCH ID, BLACK	
	THIRD ANGLE PROJECTION		SIZE B	CODE IDENT. NO. 06090
DO NOT SCALE THIS DRAWING			SHEET 1 OF 1	