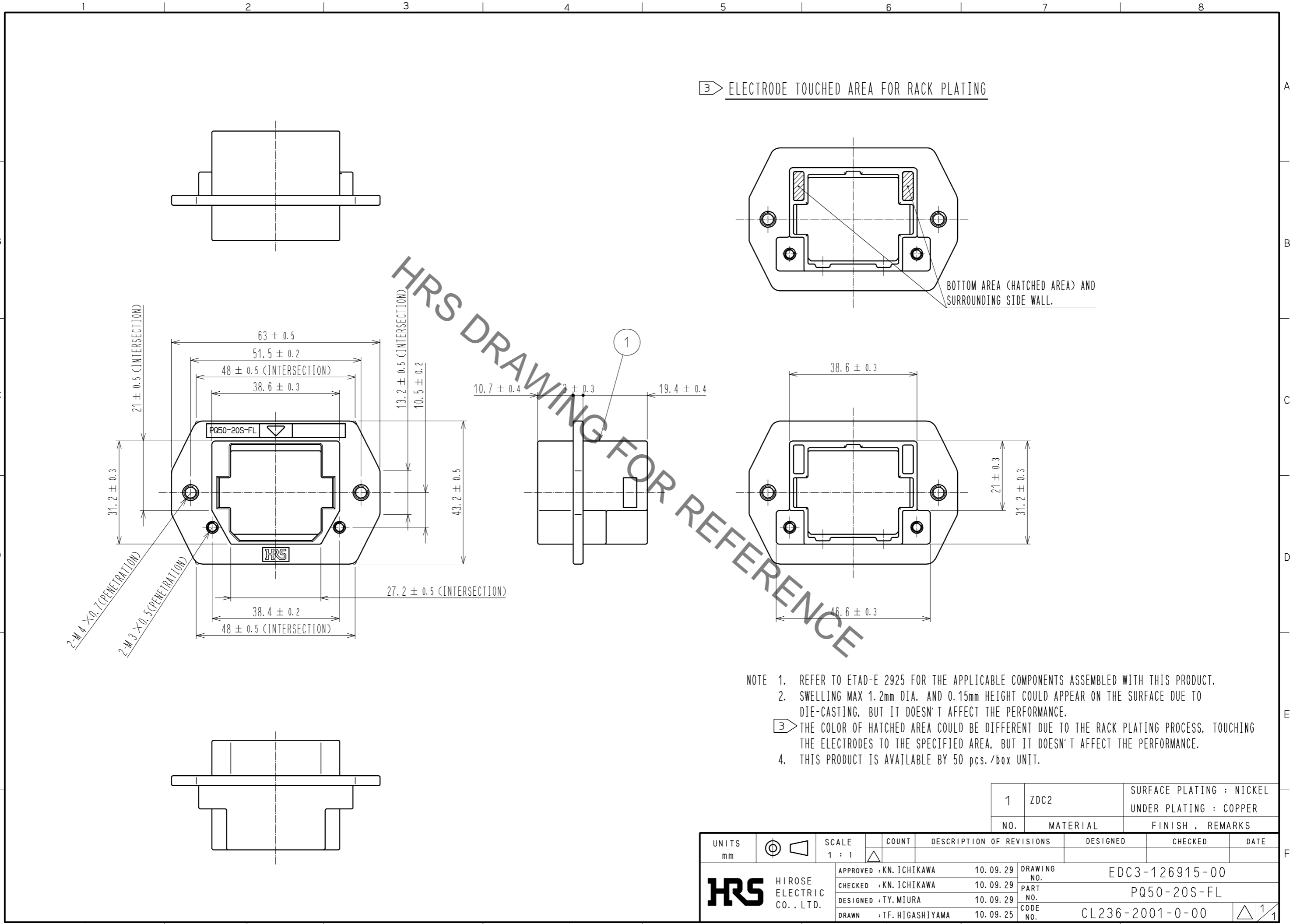


Jul.1.2019 Copyright 2019 HIROSE ELECTRIC CO., LTD. All Rights Reserved.  
 In case of consideration for using Automotive equipment / device which demand high reliability, kindly contact our sales window correspondents.



- NOTE
- REFER TO ETAD-E 2925 FOR THE APPLICABLE COMPONENTS ASSEMBLED WITH THIS PRODUCT.
  - SWELLING MAX 1.2mm DIA. AND 0.15mm HEIGHT COULD APPEAR ON THE SURFACE DUE TO DIE-CASTING, BUT IT DOESN'T AFFECT THE PERFORMANCE.
  - ③ THE COLOR OF HATCHED AREA COULD BE DIFFERENT DUE TO THE RACK PLATING PROCESS, TOUCHING THE ELECTRODES TO THE SPECIFIED AREA, BUT IT DOESN'T AFFECT THE PERFORMANCE.
  - THIS PRODUCT IS AVAILABLE BY 50 pcs./box UNIT.

1	ZDC2	SURFACE PLATING : NICKEL UNDER PLATING : COPPER
NO.	MATERIAL	FINISH . REMARKS

UNITS	SCALE	COUNT	DESCRIPTION OF REVISIONS	DESIGNED	CHECKED	DATE
mm	1 : 1	△				
<b>HRS</b> HIROSE ELECTRIC CO., LTD.			APPROVED : KN. ICHIKAWA 10.09.29 CHECKED : KN. ICHIKAWA 10.09.29 DESIGNED : TY. MIURA 10.09.29 DRAWN : TF. HIGASHIYAMA 10.09.25	DRAWING NO. EDC3-126915-00 PART NO. PQ50-20S-FL CODE NO. CL236-2001-0-00		
						1/1