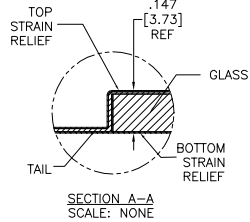


OGA DIAGONAL: 20.14 [511.67]  
 VA DIAGONAL: 19.42 [493.33]  
 PA DIAGONAL: 18.31 [465.08]

TOP LEVEL NUMBER	US NUMBER	TYPE	DIM "A" (TOTAL GLASS TO CONNECTOR)	A/G FINISH	PROD SPEC
17-8891-204	98-0003-2660-7	FFC	6.00" [152.40]	AG500	23655
17-8891-223	98-0003-2663-1	SER	6.00" [152.40]	AG500	23655
17-8891-220	98-0003-3124-3	USB R	6.00" [152.40]	AG500	23655
17-8891-206	98-0003-2201-0	NOV	SEE DWG	AG500	23655
17-8891-205	98-0003-2661-5	FFC	8.00" [203.20]	AG500	23655
17-8891-227	98-0003-2955-1	SER	8.00" [203.20]	AG500	23655
17-8891-226	98-0003-2664-9	USB R	8.00" [203.20]	AG500	23655
N/A	98-0003-3819-8	DUAL	6.00" [152.40]	AG500	23655
N/A	98-1100-0101-7	FFC	8.00" [203.20]	WC100	34523
N/A	98-1100-0102-5	USB R	8.00" [203.20]	WC100	34523

ESD CLAMHELL CASE IS USED WITH ALL NOV, USB AND SER TERMINATIONS.



- NOTES:
- WEIGHT OF GLASS IN GRAMS: 978±10%
  - NICOMATIC HOUSING P/N: OLO5  
 NICOMATIC RECEPTACLES (PINS) MATTE TIN PLATED P/N: 14106-12  
 HOUSING ORIENTED WITH LATCH DOWN

PINOUT	
1	LR
2	LL
3	SHLD
4	UL
5	UR

UNITS	INCHES [MM]
TOLERANCES UNLESS OTHERWISE SPECIFIED	
.X	±
.XX	±.03 [.76]
.XXX	±.015 [.38]
ANGLES	±1°
THIRD ANGLE PROJECTION	
DO NOT SCALE DRAWING	
SCALE	1 = 1

**3M** 3M TOUCH SYSTEMS  
 METHUEN, MA  
 USA

© COPYRIGHT 2004  
 THIS DOCUMENT IS COPYRIGHTED PROPERTY OF THE 3M COMPANY AND MAY NOT BE REPRODUCED WITHOUT 3M WRITTEN PERMISSION OR USED OR DISCLOSED FOR OTHER THAN 3M AUTHORIZED PURPOSES.

DRAWN MDS 6/19/06

REV	CHANGE NOTICE	DATE	DRW
L	REVISE PER CO 036265	4/13	SB
K	REVISE PER CO 036100	2/13	SB

TITLE  
**MARKETING DRAWING**  
**SCT32NN 19.42"**

CAD FORMAT AUTOCAD SHEET 1 OF 1

SIZE C DOCUMENT NO. TSD-32144 REV L