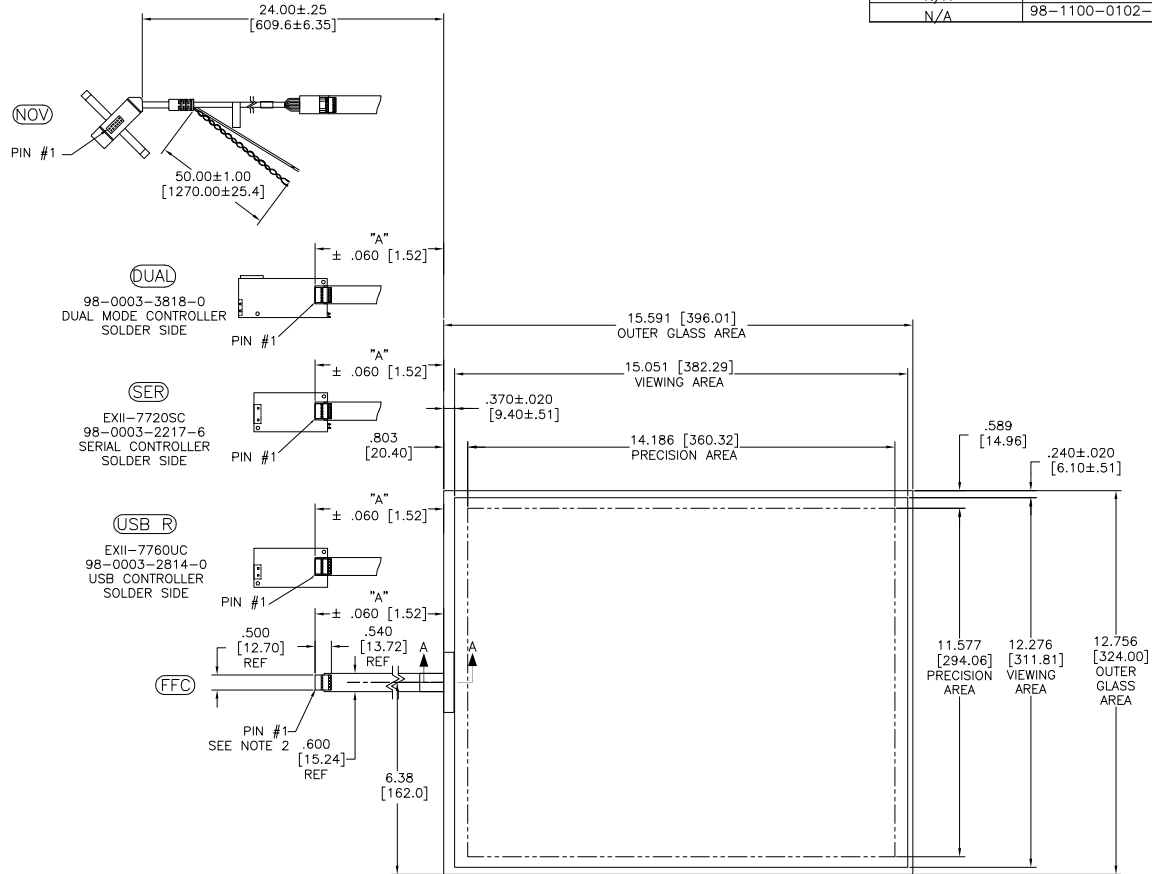
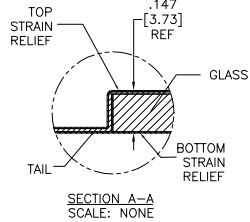


OGA DIAGONAL: 20.14 [511.67]
 VA DIAGONAL: 19.42 [493.33]
 PA DIAGONAL: 18.31 [465.08]

| TOP LEVEL NUMBER | US NUMBER | TYPE | DIM "A" (TOTAL GLASS TO CONNECTOR) | A/G FINISH | PROD SPEC |
|------------------|----------------|-------|------------------------------------|------------|-----------|
| 17-8891-204 | 98-0003-2660-7 | FFC | 6.00" [152.40] | AG500 | 23655 |
| 17-8891-223 | 98-0003-2663-1 | SER | 6.00" [152.40] | AG500 | 23655 |
| 17-8891-220 | 98-0003-3124-3 | USB R | 6.00" [152.40] | AG500 | 23655 |
| 17-8891-206 | 98-0003-2201-0 | NOV | SEE DWG | AG500 | 23655 |
| 17-8891-205 | 98-0003-2661-5 | FFC | 8.00" [203.20] | AG500 | 23655 |
| 17-8891-227 | 98-0003-2955-1 | SER | 8.00" [203.20] | AG500 | 23655 |
| 17-8891-226 | 98-0003-2664-9 | USB R | 8.00" [203.20] | AG500 | 23655 |
| N/A | 98-0003-3819-8 | DUAL | 6.00" [152.40] | AG500 | 23655 |
| N/A | 98-1100-0101-7 | FFC | 8.00" [203.20] | WC100 | 34523 |
| N/A | 98-1100-0102-5 | USB R | 8.00" [203.20] | WC100 | 34523 |

ESD CLAMHELL CASE IS USED WITH ALL NOV, USB AND SER TERMINATIONS.



- NOTES:
- WEIGHT OF GLASS IN GRAMS: 978±10%
 - NICOMATIC HOUSING P/N: OLO5
 NICOMATIC RECEPTACLES (PINS) MATTE TIN PLATED P/N: 14106-12
 HOUSING ORIENTED WITH LATCH DOWN

| PINOUT | |
|--------|------|
| 1 | LR |
| 2 | LL |
| 3 | SHLD |
| 4 | UL |
| 5 | UR |

UNITS INCHES [MM]

TOLERANCES UNLESS OTHERWISE SPECIFIED
 .X ±
 .XX ±.03 [.76]
 .XXX ±.015 [.38]
 ANGLES ±1°

THIRD ANGLE PROJECTION

DO NOT SCALE DRAWING

SCALE 1 = 1

3M 3M TOUCH SYSTEMS
 METHUEN, MA
 USA

© COPYRIGHT 2004
 THIS DOCUMENT IS COPYRIGHTED PROPERTY OF THE 3M COMPANY AND MAY NOT BE REPRODUCED WITHOUT 3M WRITTEN PERMISSION OR USED OR DISCLOSED FOR OTHER THAN 3M AUTHORIZED PURPOSES.

DRAWN MDS 6/19/06

| REV | CHANGE NOTICE | DATE | DRW |
|-----|----------------------|------|-----|
| L | REVISE PER CO 036265 | 4/13 | SB |
| K | REVISE PER CO 036100 | 2/13 | SB |

TITLE
MARKETING DRAWING
SCT32NN 19.42"

CAD FORMAT AUTOCAD SHEET 1 OF 1

SIZE C DOCUMENT NO. TSD-32144 REV L