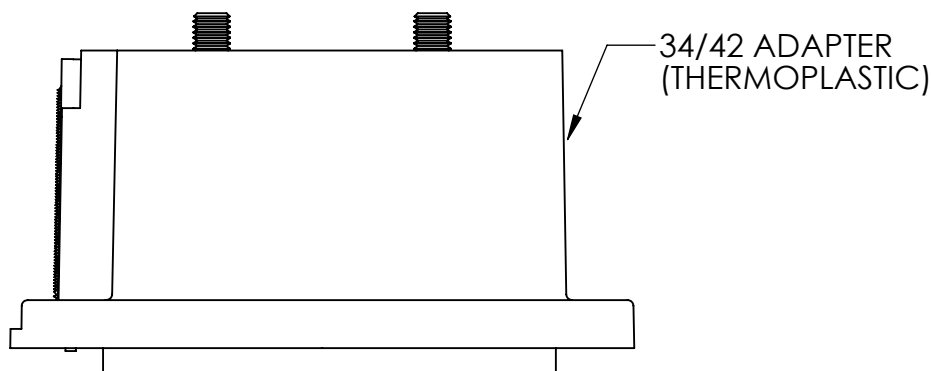
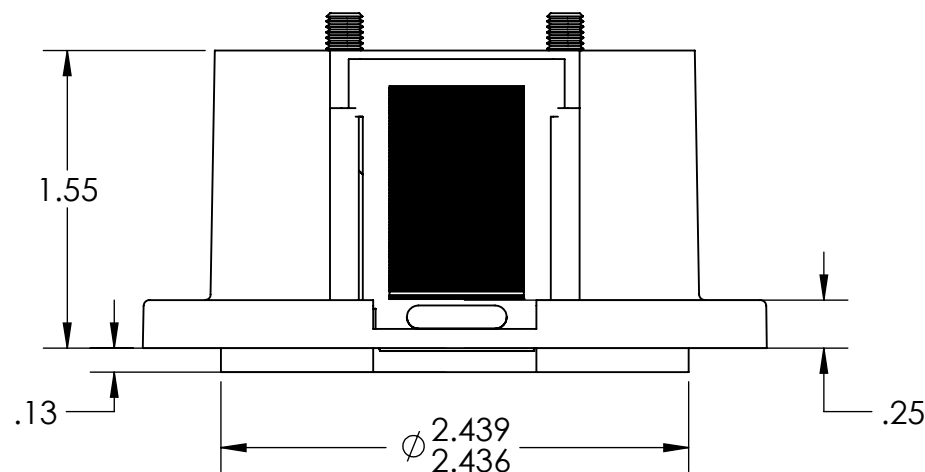
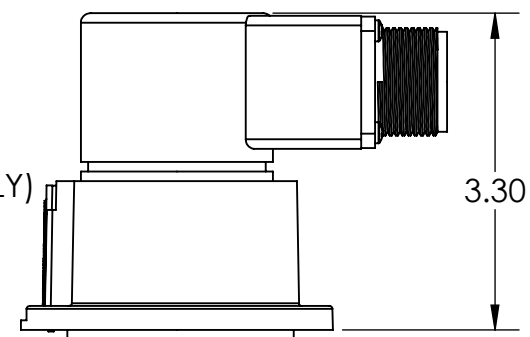


D

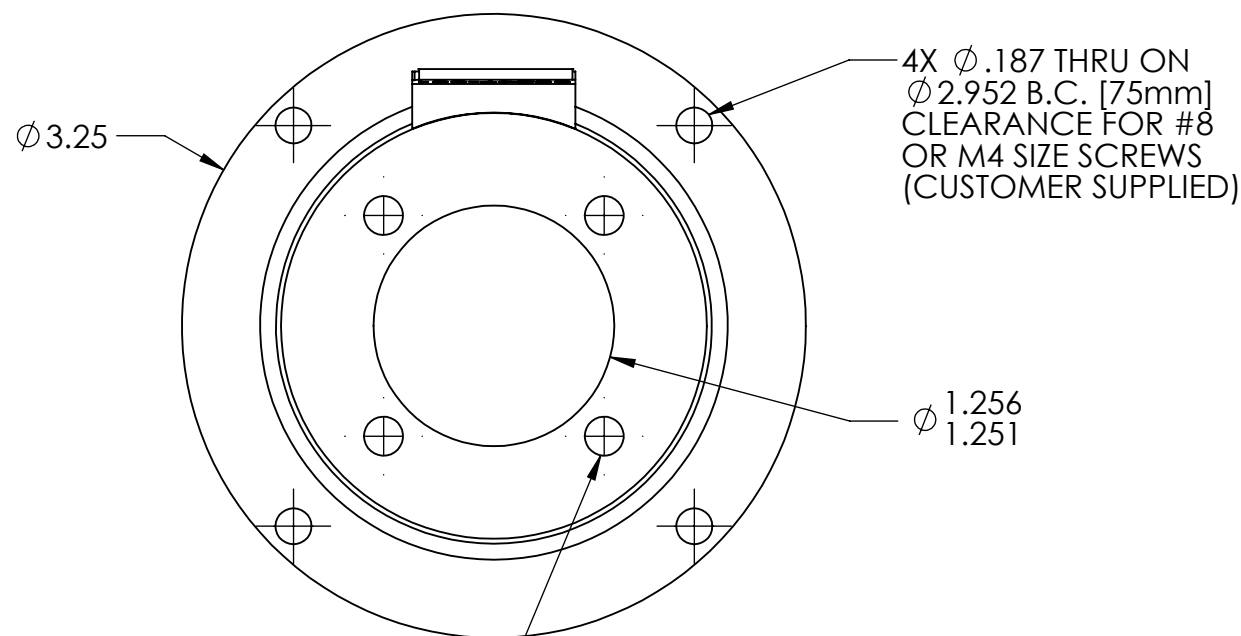


SHOWN WITH
H20EB-F12
(SOLD SEPARATELY)

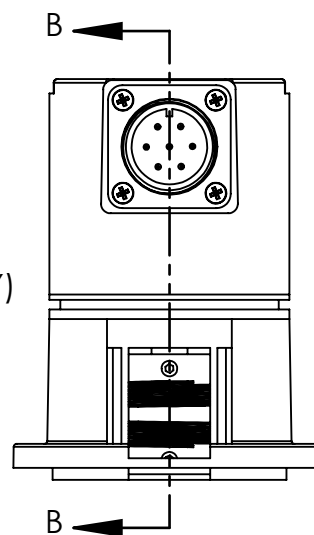


D

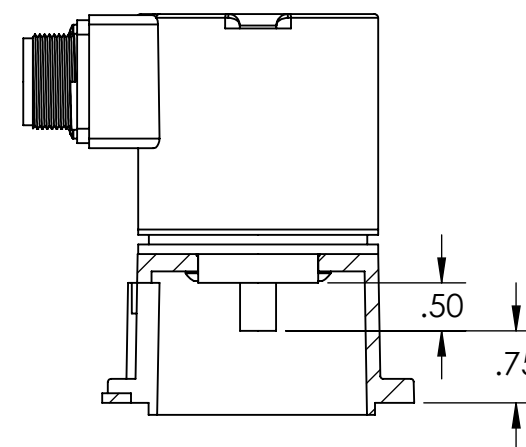
C



SHOWN WITH H25E-F45 AND
COUPLING (SOLD SEPARATELY)



SHOWN WITH SLIDING
PLATE REMOVED



SECTION B-B
SCALE 1 : 2

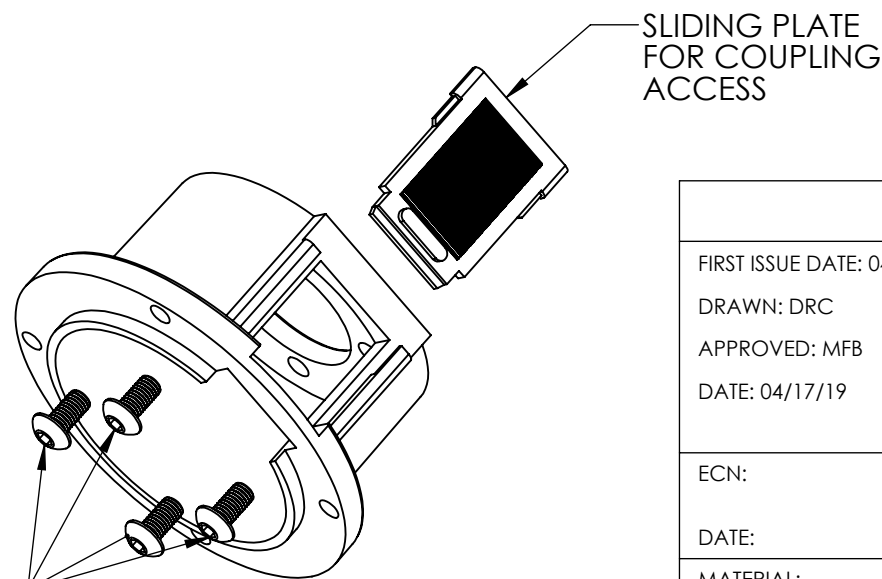
C

B

4X ϕ .203 THRU ON ϕ 1.875 B.C.
(FITS H25E WITH F45 AND
H20E WITH F12)

KIT INCLUDES:
34/42 ADAPTER, SCREWS
AND ACCESS PLATE

4X #10-32 X 3/8
BUTTON HEAD
SCREWS (1/8 HEX)



NOTE: USE ENCODER WITH .50 SHAFT EXTENSION FOR PROPER CLEARANCE

B

A

UNCONTROLLED COPY					<div><div><div><div><div></div><div></div><div></div><div></div><div></div></div><div><div><div></div><div></div><div></div></div></div><div><div><div></div><div></div><div></div></div><div><div><div></div><div></div><div></div></div></div><div><div><div></div><div></div><div></div></div></div></div><div>BEI SENSORS 1461 LAWRENCE DRIVE THOUSAND OAKS, CA 93120</div></div></div></div>			
FIRST ISSUE DATE: 04/17/19		SENSATA TECHNOLOGIES PROPRIETARY AND CONFIDENTIAL. NEITHER THIS PRINT NOR THE INFORMATION CONTAINED HEREON IS TO BE USED AGAINST THE INTERESTS OF SENSATA TECHNOLOGIES OR AGAINST THE INTERESTS OF ANY OF ITS AFFILIATED COMPANIES OR WHOLLY OWNED SUBSIDIARIES.			TITLE P/N 31170-001 NEMA 34/42 MOTOR ADAPTER KIT FOR H20/H25			
DRAWN: DRC								
APPROVED: MFB		INTERPRET DIMENSIONING AND TOLERANCING PER ASME Y14.5-2009. UNLESS OTHERWISE SPECIFIED DIMENSIONS ARE IN INCHES[MILLIMETERS] AND ARE INTENDED AS NOMINAL SEE PRODUCT SPECIFICATIONS FOR MORE DETAILS.						
DATE: 04/17/19								
ECN:		DO NOT SCALE DRAWING			THIRD ANGLE PROJECTION			
DATE:								
MATERIAL: THERMOPLASTIC, CRES STEEL					SIZE B	DWG NO. 09908-001	REV. .	
					SCALE	1:1	SOLIDWORKS	SHEET 1 OF 2

A

