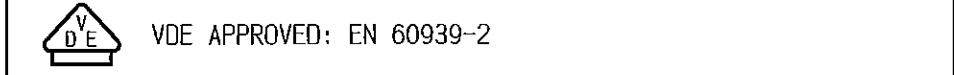
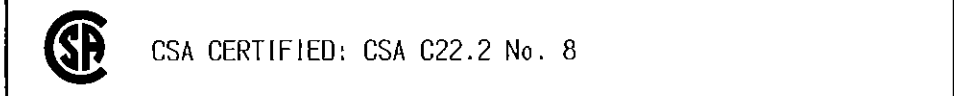
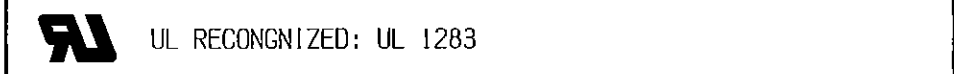


SAFETY ORGANIZATIONS

THIS FILTER HAS BEEN FORMALLY RECOGNIZED, CERTIFIED OR APPROVED BY THE LISTED AGENCY. THEREFORE, ALL TEST/REQUIREMENTS SPECIFIED IN THE LATEST REVISION OF THE FOLLOWING AGENCY STANDARDS HAVE BEEN MET:



OPERATING SPECIFICATIONS

LINE CURRENT/VOLTAGE:	6	AMP, 120/250 VAC
CSA & VDE:	6	AMP/40°C, 250 VAC

OPERATING AMBIENT TEMP. RANGE: -10°C TO $+40^{\circ}\text{C}$ @ RATED CURRENT, I_r .
IN AN AMBIENT, T_a , HIGHER THAN 40°C , THE MAXIMUM OPERATING
CURRENT, I_o , IS AS FOLLOWS: $I_o = I_r \sqrt{100 - T_a}$

$$V = \frac{1}{60}$$

LINE CURRENT/VOLTAGE: 6 AMP, 120/250 VAC
UL: 6 AMP/25°C, 120/250 VAC

OPERATING AMBIENT TEMP. RANGE: -10°C TO $+25^{\circ}\text{C}$ @ RATED CURRENT, I_r .
IN AN AMBIENT, T_a , HIGHER THAN 40°C , THE MAXIMUM OPERATING
CURRENT, I_0 , IS AS FOLLOWS: $I = I_r \sqrt{100 - T_a}$

$$10 - 1r \quad \sqrt{\frac{100 - 1r}{75}}$$

LINE FREQUENCY: 50-60Hz

MAXIMUM LEAKAGE CURRENT, EACH LINE TO GROUND:

.3mA	@ 120V, 60Hz
.5mA	@ 250V, 50Hz

RELIABILITY SPECIFICATIONS:

STORAGE TEMPERATURE:	-40°C TO +85°C
HUMIDITY:	21 DAYS @ 40°C 95% RH.
CURRENT OVERLOAD TEST:	6 TIMES I_r FOR 8 SECONDS

RECOMMENDED RECEIVING INSPECTION HIPOT:

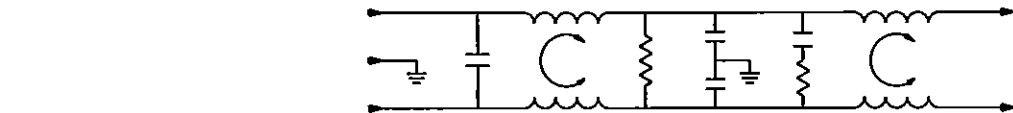
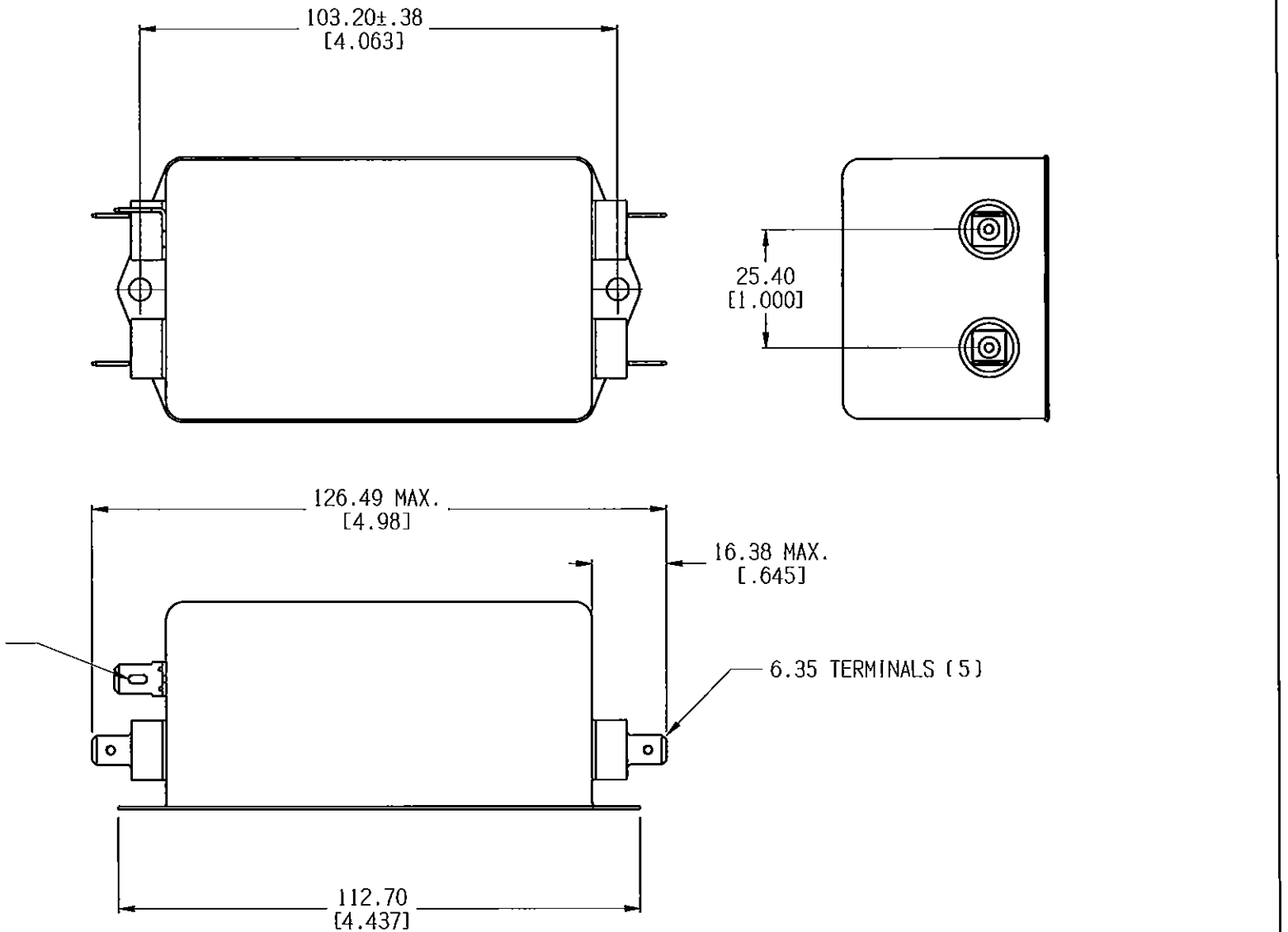
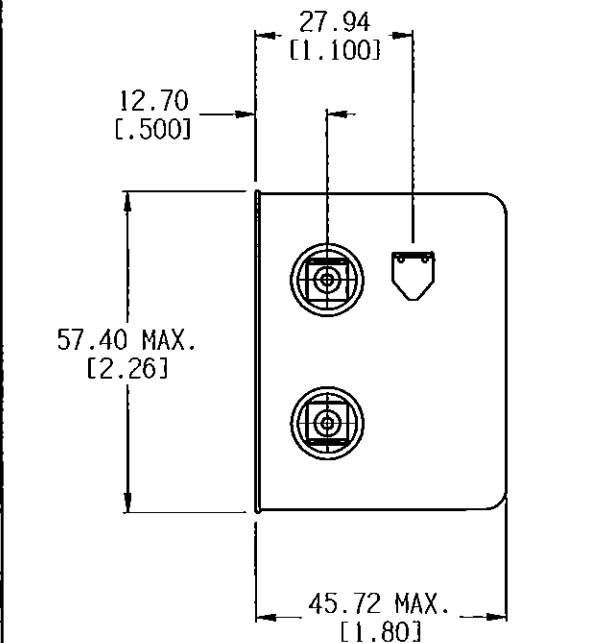
LINE TO GROUND:	1500 VAC FOR 1 MINUTE
LINE TO LINE:	1450 VDC FOR 1 MINUTE


FILTER APPROVAL:

THE BEST WAY TO SELECT AND QUALIFY A FILTER IS FOR YOUR ENGINEERING TO TEST THE UNIT IN YOUR EQUIPMENT.

TEST SPECIFICATIONS:

INDUCTANCE: 48.8 mH NOMINAL
 CAPACITANCE: (MEASURED @ 1KHZ, 0.250VAC MAX., 25°C±1°C)
 LINE TO GROUND: .008 μ F ±20%
 LINE TO LINE: 1.97 μ F ±20%
 DISCHARGE RESISTOR: 165 K Ω
 L/G AND L/L I.R.
 NO DISCHARGE RESISTOR: 6000M Ω (MIN.) @ 100VDC,
 20°C AND 50% RH



50Ω - 50Ω (MINIMUM) INSERTION LOSS													PARTS SHALL COMPLY WITH TYCO ELECTRONICS 138-702 SPECIFICATION FOR HAZARDOUS SUBSTANCES												
FREQUENCY MHz	.01	.015	.02	.05	.15	.5	2	5	7	10	20	30	UNLESS OTHERWISE SPECIFIED TOLERANCE TO BE ±0.63 MATERIAL & FINISH: AS SUPPLIED												
COMMON dB	26	28	31	20	68	72	72	68	55	55	50	45	NOTES:												
DIFF. dB	6	4	10	43	70	75	75	65	52	55	55	55													
SHEET SIZE	THIRD ANGLE PROJECTION		THIS INFORMATION IS CONFIDENTIAL AND PROPRIETARY TO TYCO ELECTRONICS CORPORATION AND ITS WORLDWIDE SUBSIDIARIES AND AFFILIATES. IT MAY NOT BE DISCLOSED TO ANYONE OTHER THAN TYCO ELECTRONICS PERSONNEL, WITHOUT WRITTEN AUTHORIZATION FROM TYCO ELECTRONICS CORPORATION. HARRISBURG, PENNSYLVANIA, USA.																						
B			6601 H.cld New Layout 2																						
																DIMENSIONS IN MILLIMETERS		TE PART NO:		6609048-5					
																SCALE:		1/2		DATE:		29SEP93		DRAWING NUMBER:	
DRW. BY:		LJD		DRG:		TAM		6EQ1		H															