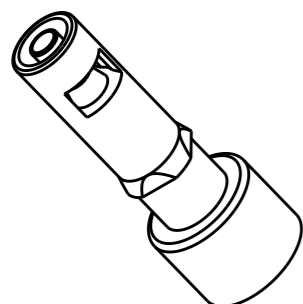


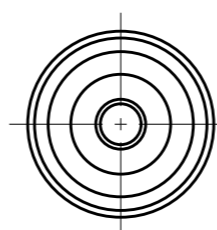
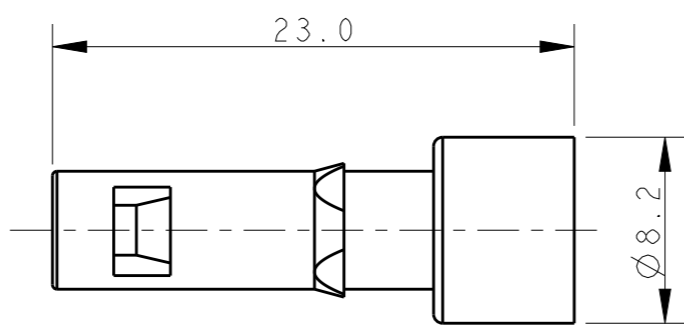
REVISIONS

| P | LTR | DESCRIPTION | DATE | DWN | APVD |
|---|-----|-------------|-----------|-----|------|
| | A | INITIAL | 10MAR2017 | RL | CW |
| | | | | | |
| | | | | | |

T2090002201-001 Pneu-c-F1.6



SCALE 2:1



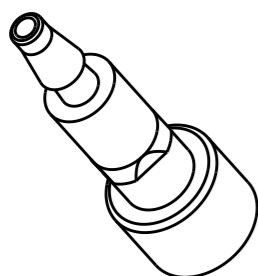
NOTES:

- 1. MATERIAL: PC;
- 2. TUBE ID:
 - 1.6 / 3.0 / 4.0mm (MATED WITH T2111032301-000 HMN-PA3)
 - 6.0mm (MATED WITH T2111022301-000 HMN-PA2)

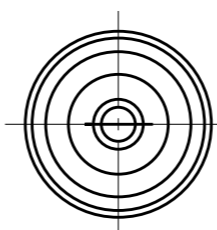
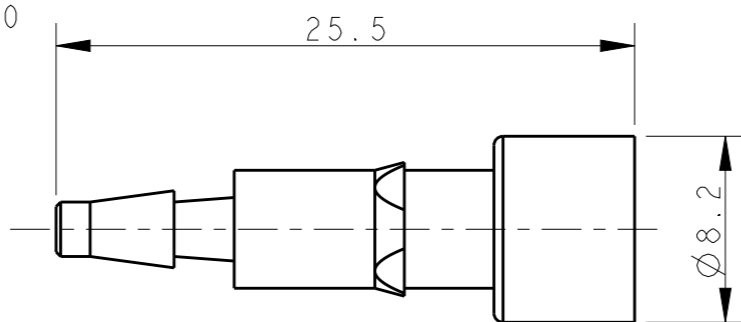
注释:

- 1. 材料: PC;
- 2. 导管内径:
 - 1.6 / 3.0 / 4.0mm (与T2111032301-000 HMN-PA3配合)
 - 6.0mm (与T2111022301-000 HMN-PA2配合)

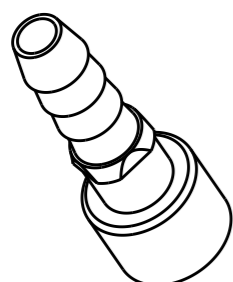
T2090002201-002 Pneu-c-F3.0



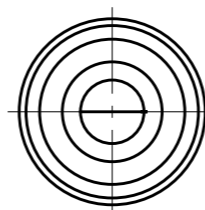
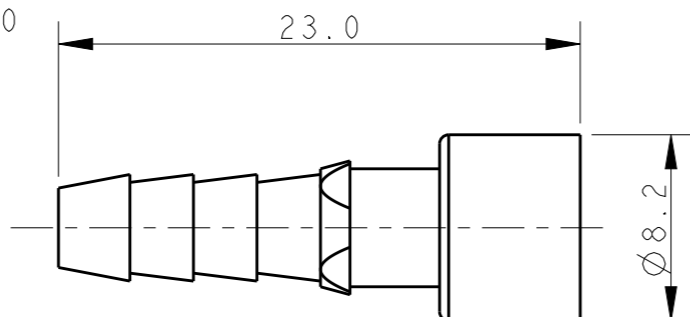
SCALE 2:1



T2090002201-003 Pneu-c-F4.0



SCALE 2:1



| | | | |
|-------------------|------------------------|---|-----------------------|
| T2090002201-001 | Pneu-c-F1.6 | Pneu-c Ø1.6 SOCKET CONTACT Pneu-c Ø1.6母针 | 1.6 |
| T2090002201-002 | Pneu-c-F3.0 | Pneu-c Ø3.0 SOCKET CONTACT Pneu-c Ø3.0母针 | 3.0 |
| T2090002201-003 | Pneu-c-F4.0 | Pneu-c Ø4.0 SOCKET CONTACT Pneu-c Ø4.0母针 | 4.0 |
| PART NUMBER 料号 | PART DESCRIPTION 描述 | | TUBE ID 导管内径(Ø/mm) |

THIS DRAWING IS A CONTROLLED DOCUMENT.

| DIMENSIONS: | | TOLERANCES UNLESS OTHERWISE SPECIFIED: | |
|-------------|--------|--|--|
| mm | | | |
| | 0 PLC | ±- | |
| | 1 PLC | ±- | |
| | 2 PLC | ±- | |
| | 3 PLC | ±- | |
| | 4 PLC | ±- | |
| | ANGLES | ±- | |
| MATERIAL | FINISH | | |
| - | - | | |
| - | - | | |

| | | |
|------|------------|-----------|
| DWN | ROY LIU | 10MAR2017 |
| CHK | KYLE ZENG | 10MAR2017 |
| APVD | CHRIS WANG | 10MAR2017 |

| | | | |
|--------------------|-------|--------|-----|
| TE Connectivity | | | |
| NAME Pneu-c-FXX | | | |
| PRODUCT SPEC | - | | |
| APPLICATION SPEC | - | | |
| WEIGHT | - | | |
| CUSTOMER DRAWING | SCALE | SHEET | REV |
| | 3:1 | 1 OF 2 | A |

4

3

2

1

THIS DRAWING IS UNPUBLISHED.

RELEASED FOR PUBLICATION

20

© COPYRIGHT 20

BY -

ALL RIGHTS RESERVED.

REVISIONS

| P | LTR | DESCRIPTION | DATE | DWN | APVD |
|---|-----|-------------|------|-----|------|
| - | | SEE SHEET 1 | - | - | - |
| | | | | | |
| | | | | | |

T2090002201-004 Pneu-c-F6.0

SCALE 2:1

NOTES:
SEE SHEET 1

| | | | |
|-------------------|------------------------|---|------------------------------|
| T2090002201-004 | Pneu-c-F6.0 | Pneu-c ϕ 6.0 SOCKET CONTACT Pneu-c ϕ 6.0母针 | 6.0 |
| PART NUMBER 料号 | PART DESCRIPTION 描述 | | TUBE ID 导管内径(ϕ /mm) |

| | | | | |
|--|--|---------------------------------|------------------------------|--|
| THIS DRAWING IS A CONTROLLED DOCUMENT. | | DWN ROY LIU 10MAR2017 | | |
| DIMENSIONS: mm | | CHK KYLE ZENG 10MAR2017 | | |
| TOLERANCES UNLESS OTHERWISE SPECIFIED: | | APVD CHRIS WANG 10MAR2017 | NAME Pneu-c-FXX | |
| 0 PLC \pm - | | PRODUCT SPEC | SIZE | |
| 1 PLC \pm - | | - | CAGE CODE | |
| 2 PLC \pm - | | APPLICATION SPEC | DRAWING NO | |
| 3 PLC \pm - | | - | RESTRICTED TO | |
| 4 PLC \pm - | | WEIGHT | A3 - ϕ T209000220100X | |
| ANGLES \pm - | | - | SCALE 3:1 SHEET 2 OF 2 REV A | |
| MATERIAL | | FINISH | CUSTOMER DRAWING | |
| - | | - | - | |

1470-19 (3/13)