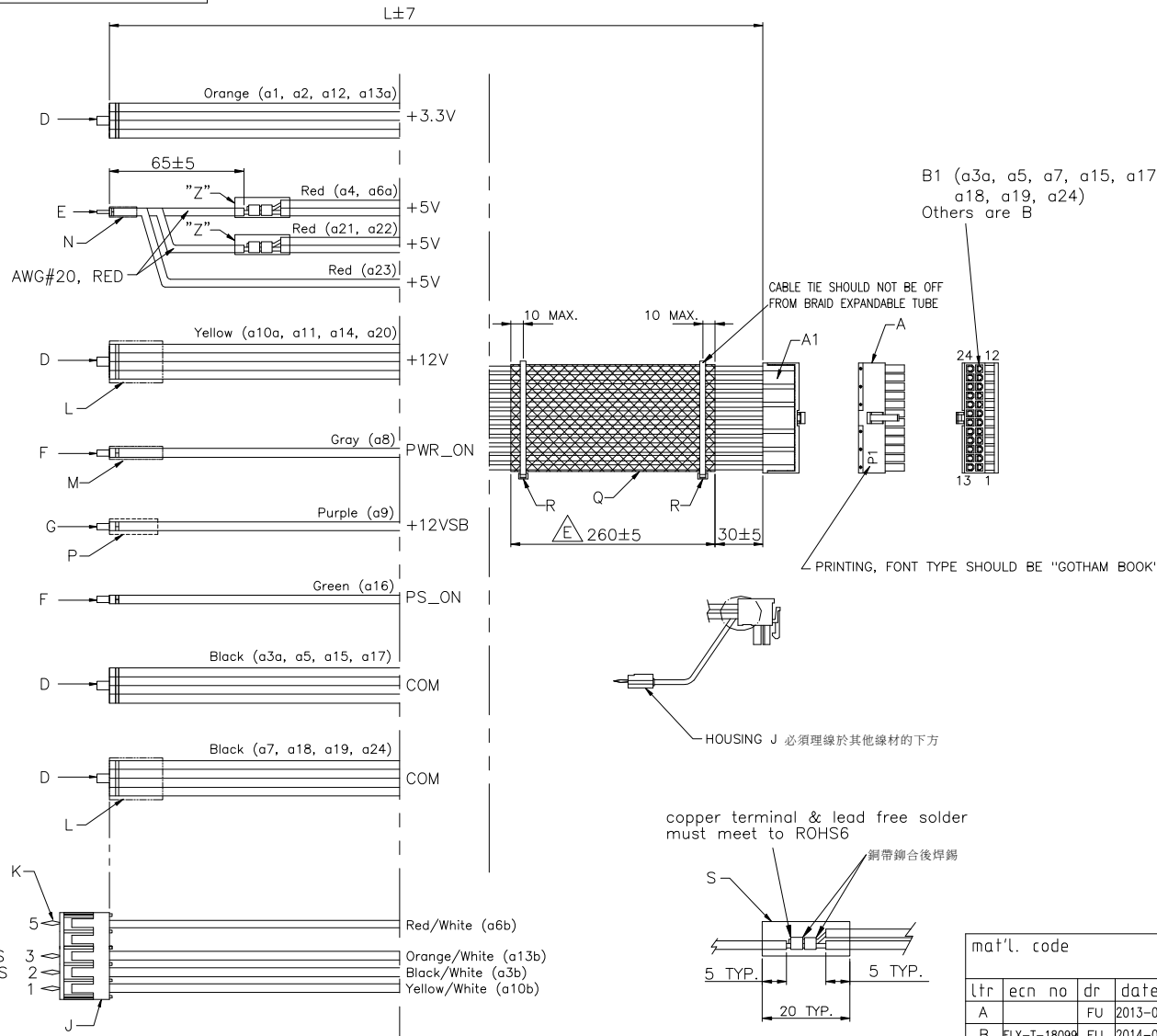


PRODUCT NUMBER
10122956-014LF

MATERIALS:

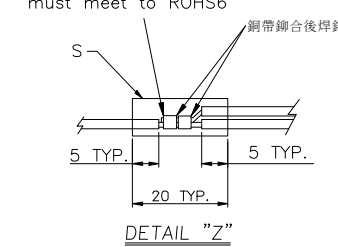
- A: RA HOUSING, x1, FCI 10122956-H24002
- A1: COVER, x1, FCI 10122956-BC2401
- B: TERMINAL, x16, FCI 10127817-121LF
- B1: HCS TERMINAL, x8, FCI 10130517-121LF
- D: TERMINAL, x4, JWT B3212TOP-A2e
- E: TERMINAL, x1, WELI SHENG INDUSTRIAL PN: H12405PS-2#A
- F: TERMINAL, x2, JWT B1611TOP-2e
- G: TERMINAL, x1, JWT B1815TOP-2e
- J: HOUSING, x1, JWT B2011H02-5P
- K: TERMINAL, x4, JWT B2011TOP-2
- L: H/S TUBE BLACK $\phi 5.0 \times 0.25$, L=10mm, x2
- M: H/S TUBE BLACK $\phi 2.0 \times 0.15$, L=10mm, x1
- N: H/S TUBE BLACK $\phi 4.0 \times 0.25$, L=10mm, x1
- P: H/S TUBE BLACK $\phi 2.5 \times 0.25$, L=10mm, x1
- Q: BRAID EXPANDABLE TUBE, x1, 5/8", BLACK SINGLE STRAND/CARRIER
- R: CABLE TIE, x2
- S: H/S TUBE BLACK $\phi 4.0 \times 0.25$, L=20mm, x2



PRINTING, FONT TYPE SHOULD BE "GOTHAM BOOK"

UL 1430 FLEXIBLE WIRES
(SHORE HARDNESS: 76±5)

PIN NO.	WIRE SIZE & Q'TY	SIGNAL	COLOR	L
a1, a2, a12, a13a	AWG#20, x4	+3.3V	ORANGE	340
a4, a6a, a21, a22, a23	AWG#20, x5	+5V	RED	340
a10a, a11, a14, a20	AWG#18, x4	+12V	YELLOW	330
a8	AWG#22, x1	PWR_OK	GRAY	340
a9	AWG#20, x1	+12VSB	PURPLE	340
a16	AWG#22, x1	PS_ON	GREEN	340
a3a, a5, a15, a17	AWG#18, x4	COM	BLACK	340
a7, a18, a19, a24	AWG#18, x4	COM	BLACK	340
a6b	AWG#24, x1	+5VRS	RED/WHITE	340
a13b	AWG#24, x1	+3.3VRS	ORANGE/WHITE	340
a3b	AWG#24, x1	RETURNS	BLACK/WHITE	340
a10b	AWG#24, x1	+12VRS	YELLOW/WHITE	340



mat'l. code		surface	tolerance	projection	product family	
ltr		tolerances unless otherwise specified		mm	MINITEK PWR4.2	
ecn no	dr	date	angles		title	
A	FU	2013-09-16	0.X ± 0.3	scale	RIGHT ANGLE WIRE OUTLET CABLE ASSEMBLY	
B	ELX-T-18099	FU	2014-06-28			0.XX ± 0.13
C	ELX-T-18594	TAI	2014-09-24	0 ± 2'	0.XXX ± 0.05	
D	ELX-T-21054	TAI	2014-10-07	dr	BEER FU	2013-09-16
E	ELX-T-21068	TAI	2015-06-05	enrg	BEER FU	2013-09-16
				chr	BEER FU	2013-09-16
				appd	BEER FU	2013-09-16
sheet index	revision sheet	E	1			



dwg no 10122956-014LF

sheet 1 of 1

size A4

type CUSTOMER Drawing