

NOTES:

1. MATERIAL AND FINISH:

BODY: BERYLLIUM COPPER, ALBALOY PLATING OVER SILVER
CONTACT PIN: BERYLLIUM COPPER, GOLD PLATING
INSULATOR: PTFE, NATURAL

2. ELECTRICAL:

- A. IMPEDANCE: 50 OHM
B. FREQUENCY RANGE: DC TO 10 GHz
C. RETURN LOSS(VSWR): 30 dB MIN.@ DC-2 GHz
27 dB MIN.@ 2-4 GHz
24 dB MIN.@ 4-6 GHz

D. INSERTION LOSS: $0.05X\sqrt{f(\text{GHz})}$ dB MAX. @ DC-6 GHz

E. INSULATION RESISTANCE: 5 GOHM MIN.
F. DIELECTRIC WITHSTANDING VOLTAGE: 1000 VRMS, MIN.
G. POWER HANDLING: 200 W MAX.@ 2.2 GHz AT 20°C
H. INTERMODULATION(3rd order): 160 dBc Min.@ 2X43dBm

3. MECHANICAL:

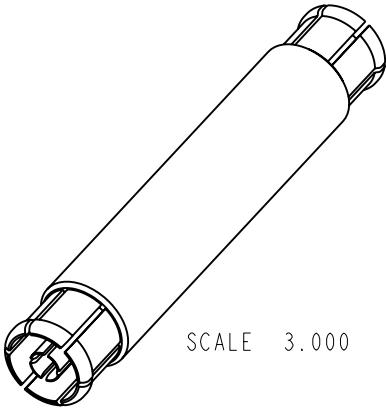
- A. MATING CYCLES:
IF MATING PART IS SMOOTH BORE,CATCHERS MITT: 1000 CYCLES MIN.
IF MATING PART IS LIMITED & FULL DETENT:100 CYCLES MIN.
B. TEMPERATURE RANGE:-65°C TO +165°C

THIRD ANGLE PROJ.

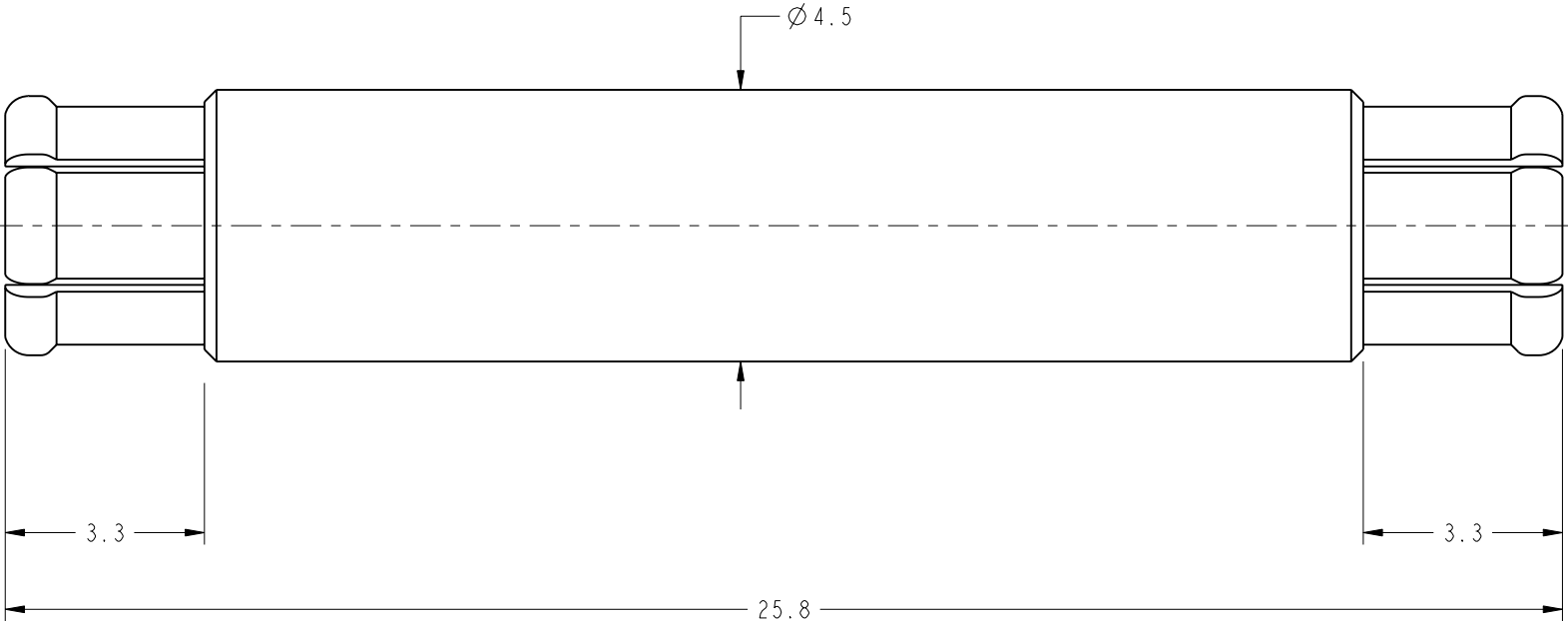


REVISIONS

REV	DESCRIPTION	DATE	ECO	APPR
A	RELEASE TO MFG., PART NO. WAS: 915-1003	19-Nov-15	50843	BCG



SCALE 3.000



CUSTOMER OUTLINE DRAWING

ALL OTHER SHEETS ARE FOR INTERNAL USE ONLY

UNLESS OTHERWISE SPECIFIED, DIMENSIONS ARE IN METRIC AND TOLERANCES ARE:
<0.5mm ± 0.05mm 0.5 - 6mm ±0.1mm 6 - 30mm ±0.2mm 30 - 120mm ± 0.3mm ANGLES ±1°

NOTICE - These drawings, specifications, or other data (1) are, and remain the property of Amphenol corp. (2) must be returned upon request; and (3) are confidential and not to be disclosed to any person other than those to whom they are given by Amphenol Corp. the furnishing of these drawings, specifications, or other data by Amphenol Corp., or to any other person to anyone for any purpose is not to be regarded by implicatioin or otherwise in any manner licensing, granting rights to permitting such holder or any other sperson to manufacture, use or sell any product, process or design, patented or otherwsie, that may in any way be related to or disclosed by said drawings, specifications, or other data.

MATERIAL	DRAWN	DATE	TITLE PSMP BULLET 25.8mm LONG		Amphenol RF www.amphenolrf.com	
	ENGINEER	DATE				
REFERENCE EAR06125	APPROVED	DATE	SCALE: 8.0:1.0		DRAWING NO. PSMP7071A2-013-AT8GPA-50	
CONFIGURATION LEVEL:			SHEET 2 OF 2		ITEM NO. 677071ABDA1BT5F	
FINISH	CAD FILE I:\PSMP\PSMP7071A2-013-AT8GPA-50		DWG SIZE B		REV A	
					PART NO. PSMP-FSBA-2580	