

PART NAME: KNOB SCALE: 1:1 DATE: 12/16/53 DR. BY JC

THIS DRAWING IS THE PROPERTY OF DAVIES MOLDING COMPANY, IS SUBMITTED SOLELY AS A DESIGN OR ENGINEERING PROJECT. WE ACCEPT NO RESPONSIBILITY WHATSOEVER FOR THE PRACTICAL APPLICATION OF THE PIECES MADE TO THIS DESIGN.

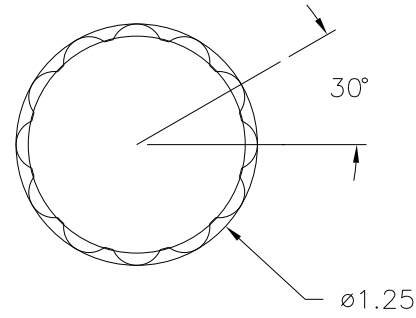


DESIGNERS & MANUFACTURERS OF KNOBS, HANDLES, CASES & CUSTOM PLASTIC COMPONENTS

P/N 3008BG

M NO. 3008

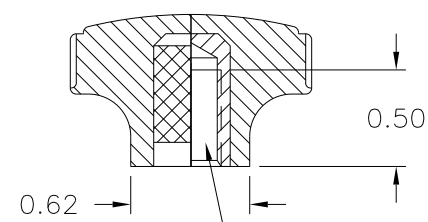
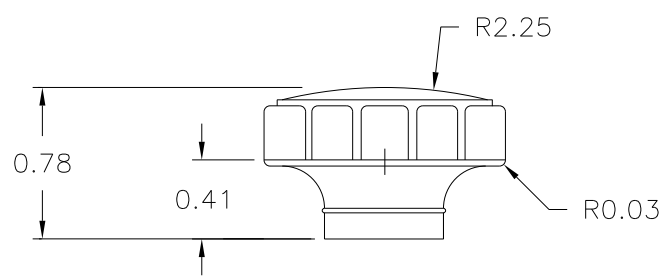
CAD/REDRAWN : 5/20/94 : HD



ⓑ

ⓒ

| | |
|-----------|----------|
| CAV. | 3008 |
| PLUNGER | 3008 |
| PIN | 3008-29 |
| SHIMS | 3008-A+B |
| INSERT | 10528 |
| LEG SHIMS | 1/32 |



5/16-18 UNC-2B THD'D.
INSERT 10528, H.H.BRASS

MATERIAL: G.P. PHENOLIC (B11)
COLOR: BLACK

| | | | | | |
|---|-----------------------------------|---------|-------------------------------------|----|---------|
| TOLERANCES: UNLESS OTHERWISE SPECIFIED | DO NOT SCALE DRAWING | | | | |
| DECIMALS: X.XXX ± .005 X.XX ± .015 | MM: X.XX ± 0.15MM X.X ± 0.4MM | C | WAS 3/4 HGT.KNOB, LEG SHIM ADDED | HD | 10/7/83 |
| | | B | WAS 3008-28 PIN, WAS 1-78 | NH | 8/13/74 |
| FRACTIONS ± 1/64 | ANG. ± 1° | CHANGES | | | |