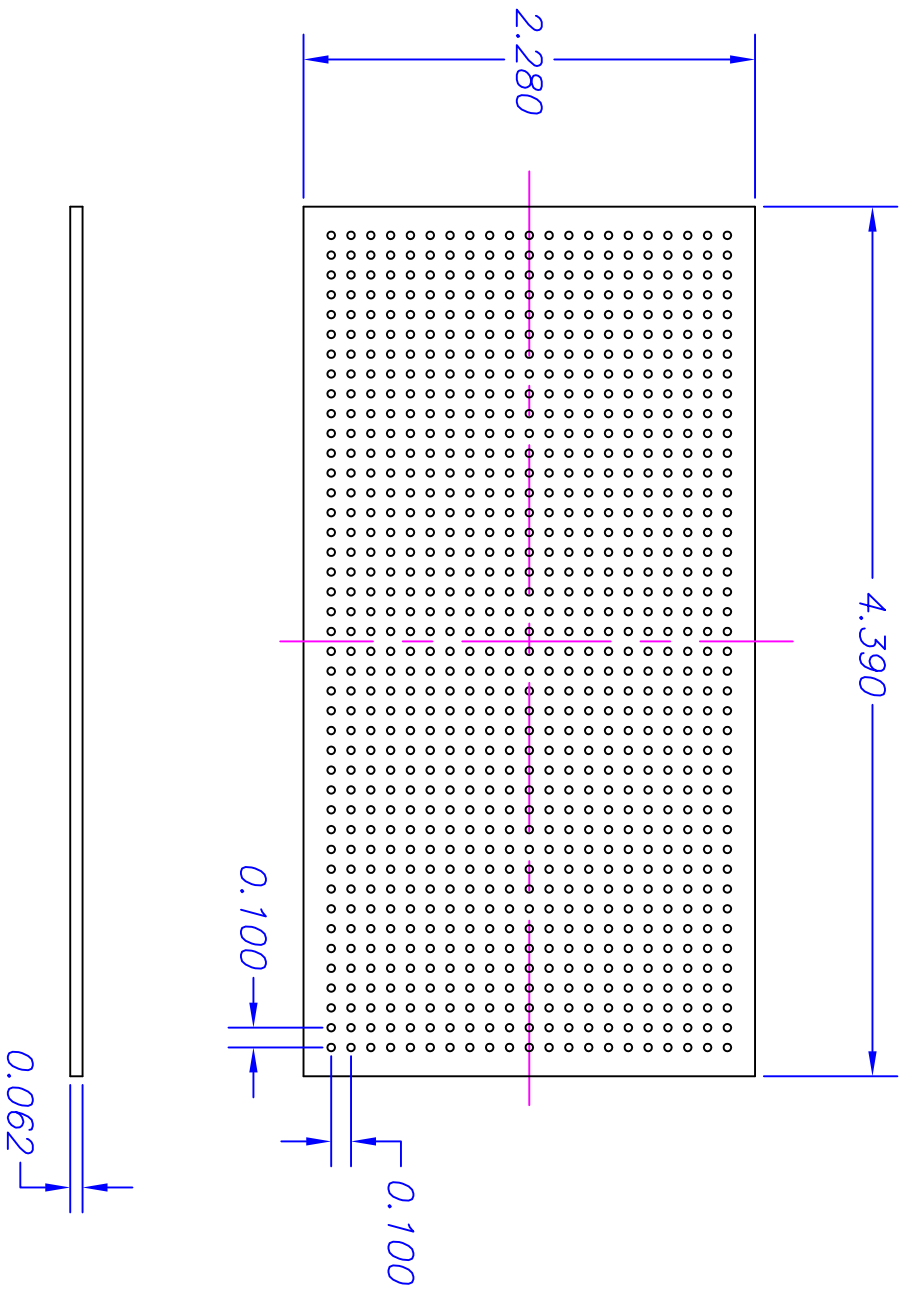


SERPAC Electronics Enclosures

CIRCUIT BOARD 373/473

| NO. | REVISION | DATE |
|-----|----------------------------|------|
| A | Update dwg G & C in 1 dwg. | 4/02 |



NOTES:

1. GRID BOARD: 0.038 ϕ HOLES, 0.100 CENTER TO CENTER SPACING
2. MATERIAL: G-10 GLASS EPOXY (p/n 3XX)
3. MATERIAL: CLAD BOARD-2 OZ., 2/0 COPPER FOIL (p/n 4XX) -No Holes.

04-2002. ALL DIMENSIONS F.005