

5

4

3

2

1



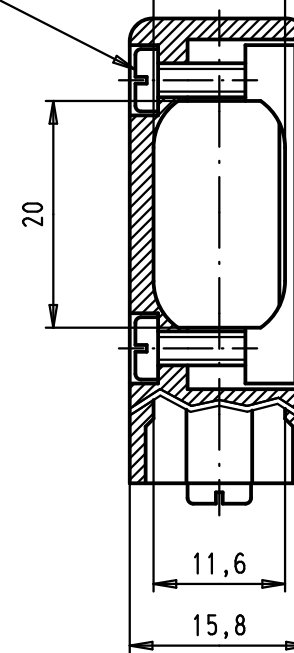
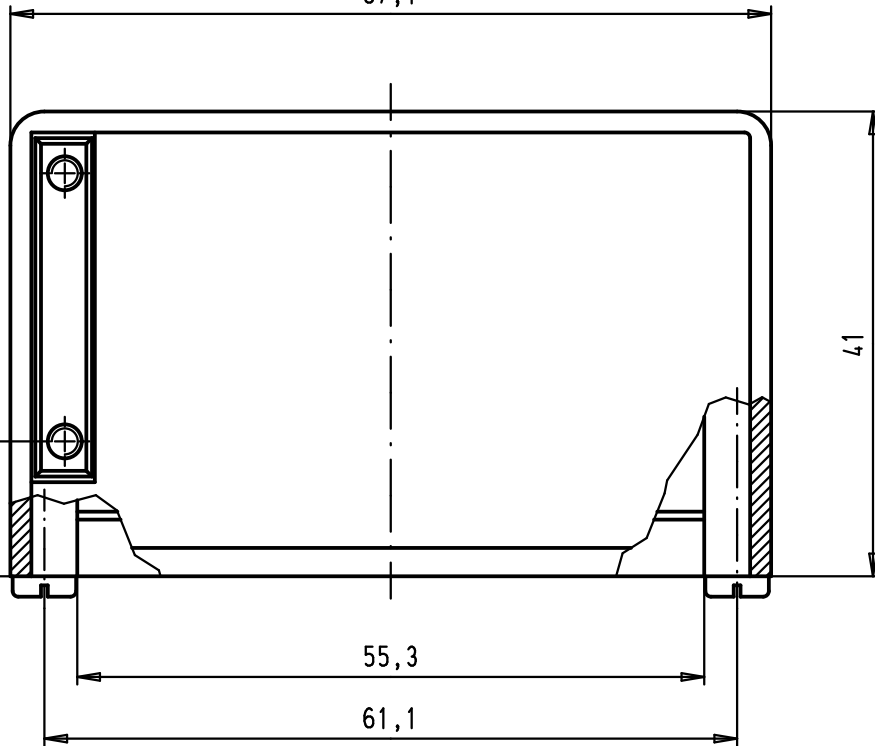
Slotted pan head tapping screws
DIN 7971-ST 2,9x6,5-F
screwing torque=35Ncm +/-5Ncm

4,3

67,1

Slotted pan head tapping screws
DIN 7971-ST 2,2 x 9,5-F
Maximum screwing torque= 0,25 mN

Min. 5,75
Max. 11,6

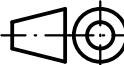



D

C

B

A

			Det.	Name	 All Dim. in mm Orig. Size DIN A 4
			Detail.	28/03/02 CV	
			Insp.	25-MAY-11 JMDV	
EC03223	25-MAY-11	SD	Stand.		
34886	26/02/08	PK	HARTING EURL F-95972 Paris		
29760	28/03/02	CV			
Mod.	Det.	Name			

D-Sub, hood 50 poles for spring or slide locking, side cable entry		Maßstab/ Scale 1,5:1
TB 09 67 050 051X		Blatt/ Page 1 / 1
Sub.		

09 67 050 0513	Thermoplastic metallized
09 67 050 0511	Thermoplastic grey RAL 7032
Part number	Material