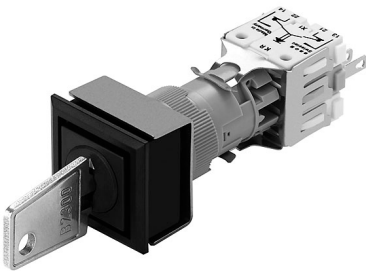


# EAO – Your Expert Partner for Human Machine Interfaces

## 923-.401-00 - Keylock switch actuator 2 positions square

### 923-.401-00 - Keylock switch actuator 2 positions square



*Attention: The preview is based on a sample product. This can differ from your current configuration.*

#### Mounting

Mounting cut-out Design 21 mm x 21 mm  
flush

#### Front

Front dimension 24 mm x 24 mm  
Front shape square

#### Other Attributes

Weight 0,027 kg

#### Operating-/Indication part

Switching angle 90° right

#### IP-Rating

Front protection IP40

#### Connection Method

Terminal Solder 2.8 x 0.5 mm

#### Actuator

Switching action Rest(a) - Maintain

#### Switching element

Rotary positions 2  
Switching system Snap-action switching element  
Contacts 3 NC + 3 NO  
Switching current 5 A  
Contact material  
Switching voltage 250 V AC

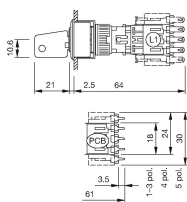
#### Function

Keylock switch

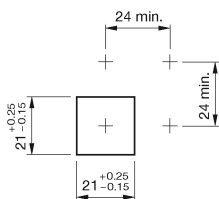
# EAO – Your Expert Partner for Human Machine Interfaces

923-.401-00 - Keylock switch actuator 2 positions square

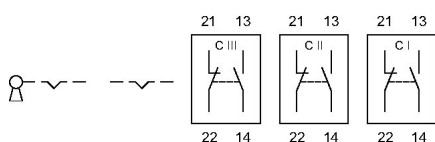
## Dimensions



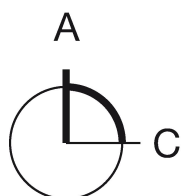
## Mounting cut-outs



## Wiring diagram



## Switching positions



## Additional information

Standard lock B2 300

Further lock numbers see «Technical data»

## Legend

Contacts: NC = Normally closed, NO = Normally open

Switching action: A = Rest, C = Maintained