



NetKey™ Cabling System

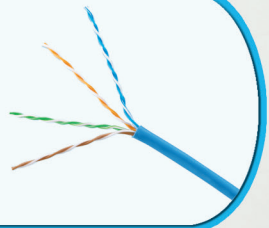
PANDUIT™
infrastructure for a connected world

NetKey™ Cabling System

The NetKey™ Copper and Fibre Cabling System provides a complete, standards compliant cabling infrastructure solution for voice, data and video applications. NetKey™ Modules feature the universal “keystone” design and are compatible with a wide assortment of modular patch panels, faceplates and surface mount boxes. When teamed with complementary Panduit products, the NetKey™ solutions cover all your needs from the telecommunication room to the work area with the proven innovation and quality you depend on from Panduit.



NetKey™ Copper Cable
Page 4



NetKey™ Modules
Pages 5, 7 and 15

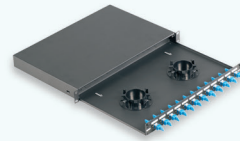


**NetKey™ Copper
and Fibre
Patch Cords**
Pages 5, 8 and 9





NetKey Fiber Patch Cords
Page 6



NetKey Fiber Adapters and Enclosures
Page 7



NetKey™ Patch Panels
Page 10



NetKey™ Faceplates and Surface Mount Boxes
Pages 11 – 14



Identification and Labelling Systems
Page 23



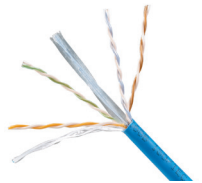
NetKey A/V Modules
Page 13



Racks and Cable Management
Page 22

NetKey™ Copper Cable

- Meets ISO/IEC and ANSI/TIA-568-C.2 Category 6A/Class E(A), Category 6/Class E, and Category 5e/Class D performance requirements
- Reduced cable diameter for improved installation and termination
- Descending length cable markings enable easy identification of remaining cable
- Third party verified to ISO 11801 and ANSI/TIA-568-C.2
- 305m (1,000 ft.) in an easy-pay-out box



NUC6C04BU-CE



NUC6CR04BU-CE

| Part Number | Description |
|---|---|
| Category 6A U/UTP Copper Cable | |
| NUL6X04BU-CEG | Category 6A, low smoke zero halogen (LSZH - IEC60332-1), 4-pair, 23 AWG, U/UTP, copper cable, Blue. |
| Category 6 UTP Copper Cable – Reduced Diameter | |
| NUL6CR04BU-CE^ | Category 6, low smoke zero halogen (LSZH), 4-pair, UTP, blue copper cable. |
| NUC6CR04BU-CE^ | Category 6, PVC (CM), 4-pair, UTP, blue copper cable. |
| Category 6 UTP Copper Cable | |
| NUL6C04BU-CE^ | Category 6, low smoke zero halogen (LSZH), 4-pair, UTP, blue copper cable. |
| NUC6C04BU-CE^ | Category 6, PVC (CM), 4-pair, UTP, blue copper cable. |
| Category 5e UTP Copper Cable | |
| NUL5C04BU-CE^ | Category 5e, low smoke zero halogen (LSZH), 4-pair, UTP, blue copper cable. |
| NUC5C04BU-CE^ | Category 5e, PVC (CM), 4-pair, UTP, blue copper cable. |

^For standard colours replace colour suffix BU (Blue) with IG (International Grey) or WH (White). Please contact Customer Service for additional colours and flame ratings.

NetKey™ Copper Category 6A, 6, 5e, and 3 Jack Modules

- Exceeds all industry performance standards for Category 6A, 6, 5e and 3
- Punchdown jack modules are 100% performance tested and individually serialized for future traceability
- Supports PoE, PoE+, and PoE++
- Snap in and out of keystone openings for easy moves, adds and changes
- Universal label includes T568A and T568B wiring schemes



NK6X88MIW
NK6X88IW-Q



NK6TMIW



NK688MIW
NK688MIW-Q



NKP5E88MIW
NKP5E88MIW -Q



NK5E88MIWY
NK5E88MIW-Q



NK388MIWY



NK366UMIWY



NK366MIWY

| Part Number | Description | Colour |
|-------------|-------------|--------|
|-------------|-------------|--------|

NetKey™ Category 6A UTP Jack Modules*

| | | |
|-------------|---|------------|
| NK6X88MIW | Category 6A, component compliant, 8-position, 8-wire, keystone punchdown jack module. | Off White. |
| NK6X88MIW-Q | Category 6A, component compliant, 8-position, 8-wire, keystone punchdown jack module. Convenience pack of 25. | Off White. |

NetKey™ Category 6 UTP Jack Modules*

| | | |
|------------|--|------------|
| NK6TMIW | Category 6, 8-position, 8-wire, keystone TP termination style jack module. | Off White. |
| NK688MIW | Category 6, component-compliant, 8-position, 8-wire, keystone punchdown jack module. | Off White. |
| NK688MIW-Q | Category 6, component-compliant, 8-position, 8-wire, keystone punchdown jack module. Convenience pack of 25. | Off White. |

NetKey™ Category 5e UTP Jack Modules*

| | | |
|--------------|--|------------|
| NKP5E88MIW | Category 5e, component-compliant 8-position, 8-wire, keystone punchdown jack module. | Off White. |
| NKP5E88MIW-Q | Category 5e, component-compliant 8-position, 8-wire, keystone punchdown jack module. Convenience pack of 25. | Off White. |
| NK5E88MIWY | Category 5e, component-compliant 8-position, 8-wire, keystone leadframe jack module. | Off White. |
| NK5E88MIW-Q | Category 5e, component-compliant 8-position, 8-wire, keystone leadframe jack module. Convenience pack of 25. | Off White. |

NetKey™ Category 3 UTP Jack Modules**

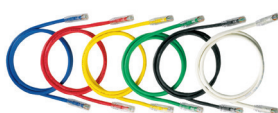
| | | |
|------------|--|------------|
| NK388MIWY | Category 3, 8-position, 8-wire, keystone leadframe jack module. | Off White. |
| NK366UMIWY | Category 3, 6-position, 6-wire, keystone leadframe jack module. Termination cap color-coded to USOC wiring scheme. | Off White. |
| NK366MIWY | Category 3, 6-position, 6-wire, keystone leadframe jack module. | Off White. |

* For standard colors, replace IW (Off White) with: EI (Electric Ivory), IG (International Gray), WH (White), BL (Black), BU (Blue), RD (Red), YL (Yellow), GR (Green), OR (Orange) or VL (Violet).

** For standard colors, replace IW (Off White) with: EI (Electric Ivory), IG (International Gray), WH (White) or BL (Black).

NetKey™ Copper UTP Patch Cords

- Meet all industry performance standards for Category 6A, 6 and 5e
- 100% performance tested
- Available in a variety of colours and lengths for design flexibility



NK6APC3BU
NK6PC3MBUY



NK5EPC3MBUY

| Part Number | Description |
|-------------|-------------|
|-------------|-------------|

Category 6A

| | |
|-----------|---|
| NK6APC3BU | Category 6A, UTP patch cord with modular plugs on each end. |
|-----------|---|

Category 6

| | |
|------------|--|
| NK6PC3MBUY | Category 6, UTP patch cord with modular plugs on each end. |
|------------|--|

Category 5e

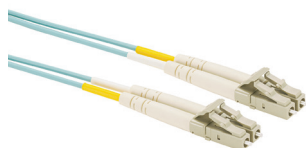
| | |
|-------------|---|
| NK5EPC3MBUY | Category 5e, UTP patch cord with modular plugs on each end. |
|-------------|---|

^Available in 0.5, 1, 2, 3, 4, 5 metre lengths.

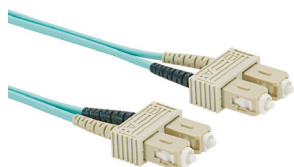
*For standard colours other than Off White, add suffix BL (Black), BU (Blue), RD (Red), YL (Yellow), GR (Green), OR (Orange), VL (Violet) or GY (Grey) before Y in the part number. For example, the part number of a blue, Category 6, 5-metre patch cord is NK6PC5MBUY.

NetKey™ Fibre Optic Patch Cords and Pigtails*

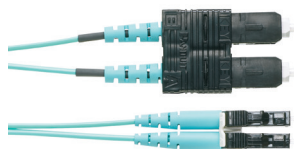
- Compliant with ANSI/TIA 568-C.3-1 and ISO/IEC 11801, TIA-604-5 (FOCIS-5)
- Patch cords and pigtails include OM3 fiber or OM1, OM2, or OS2 fiber in 900µm tight-buffered fiber, 1.6mm or 3.0mm duplex zipcord jacketed cable
- 100% performance tested assures that patch cords and pigtails are standard compliant
- Q.C. identification label quality control reference provides lifetime traceability of test data



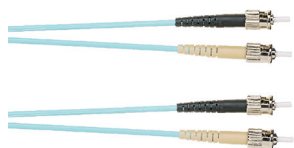
LC to LC Patch Cord



SC to SC Patch Cord



SC to LC Patch Cord



ST to ST Patch Cord

| Part Number | Description |
|-------------|-------------|
|-------------|-------------|

LC to LC Patch Cords

| | |
|-----------------|---|
| NKFP62ELLLSM001 | OM1 2 Fiber 1.6mm LSZH Jacket Patch Cord LC Duplex to LC Duplex - 1 meter |
| NKFP52ELLLSM001 | OM2 2 Fiber 1.6mm LSZH Jacket Patch Cord LC Duplex to LC Duplex - 1 meter |
| NKFPX2ELLLSM001 | OM3 2 Fiber 1.6mm LSZH Jacket Patch Cord LC Duplex to LC Duplex - 1 meter |
| NKFPZ2ELLLSM001 | OM4 2 Fiber 2.0mm LSZH Jacket Patch Cord LC Duplex to LC Duplex - 1 meter |
| NKFP92ELLLSM001 | OS2 2 Fiber 1.6mm LSZH Jacket Patch Cord LC Duplex to LC Duplex - 1 meter |

LC to LC OM1 and OM2 patch cords are available in lengths of 1-5, 10, 15, 20m.

LC to LC OS2 and OM3 patch cords are available in lengths of 1-15, 20, 25, 30, 35, 40, 45, 50m.

SC to SC Patch Cords

| | |
|-----------------|---|
| NKFP623LSSSM001 | OM1 2 Fiber 3.0mm LSZH Jacket Patch Cord SC Duplex to SC Duplex - 1 meter |
| NKFP523LSSSM001 | OM2 2 Fiber 3.0mm LSZH Jacket Patch Cord SC Duplex to SC Duplex - 1 meter |
| NKFPX23LSSSM001 | OM3 2 Fiber 3.0mm LSZH Jacket Patch Cord SC Duplex to SC Duplex - 1 meter |
| NKFP923LSSSM001 | OS2 2 Fiber 3.0mm LSZH Jacket Patch Cord SC Duplex to SC Duplex - 1 meter |

SC to SC patch cords are available in lengths of 1-5, 10, 15, and 20m.

SC to LC Patch Cords

| | |
|-----------------|---|
| NKFP62ELLSSM001 | OM1 2 Fiber 1.6mm LSZH Jacket Patch Cord LC to SC - 1 meter |
| NKFP52ELLSSM001 | OM2 2 Fiber 1.6mm LSZH Jacket Patch Cord LC to SC - 1 meter |
| NKFPX2ELLSSM001 | OM3 2 Fiber 1.6mm LSZH Jacket Patch Cord LC to SC - 1 meter |

SC to LC OM1 and OM2 patch cords are available in lengths of 1-5, 10, 15, 20m.

SC to LC OS2 and OM3 patch cords are available lengths of 1-15, 20, 25, 30, 35, 40, 45, 50m

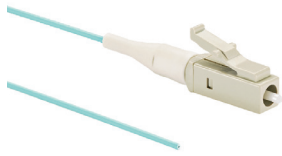
ST to ST Patch Cords

| | |
|-----------------|---|
| NKFP623L22SM001 | OM1 2 Fiber 3.0mm LSZH Jacket Patch Cord ST to ST - 1 meter |
| NKFP523L22SM001 | OM2 2 Fiber 3.0mm LSZH Jacket Patch Cord ST to ST - 1 meter |
| NKFPX23L22SM001 | OM3 2 Fiber 3.0mm LSZH Jacket Patch Cord ST to ST - 1 meter |
| NKFP923L22SM001 | OS2 2 Fiber 3.0mm LSZH Jacket Patch Cord ST to ST - 1 meter |

ST to ST patch cords are available in lengths of 1-5, 10, 15, and 20m.

*For standard meter lengths other than 1 meter (2, 3, 5 or 10), change the length designation in the part number to the desired length. For example, the part number for a 2 meter, ST to ST, OM1, riser, duplex patch cord is NKFP623R22SM002

NetKey™ Fibre Optic Patch Cords and Pigtails (continued)



LC to Pigtail



SC to pigtail

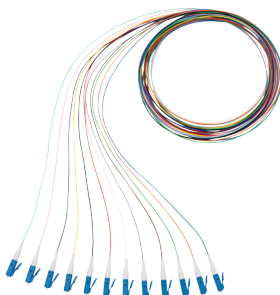


ST to Pigtail

| Part Number | Description |
|--------------------|---|
| LC Pigtails | |
| NKFP61BN1NNM001 | OM1 1 Fiber 900um Buffered Pigtail LC - 1 Meter |
| NKFP51BN1NNM001 | OM2 1 Fiber 900um Buffered Pigtail LC - 1 Meter |
| NKFPX1BN1NNM001* | OM3 1 Fiber 900um Buffered Pigtail LC - 1 Meter |
| NKFPZ1BN1NNM001* | OM4 1 Fiber 900um Buffered Pigtail LC - 1 Meter |
| NKFP91BN1NNM001* | OS2 1 Fiber 900um Buffered Pigtail LC - 1 Meter |
| SC Pigtails | |
| NKFP61BN3NNM001 | OM1 1 Fiber 900um Buffered Pigtail SC - 1 Meter |
| NKFP51BN3NNM001 | OM2 1 Fiber 900um Buffered Pigtail SC - 1 Meter |
| NKFPX1BN3NNM001* | OM3 1 Fiber 900um Buffered Pigtail SC - 1 Meter |
| NKFP91BN3NNM001* | OS2 1 Fiber 900um Buffered Pigtail SC - 1 Meter |
| ST Pigtails | |
| NKFP61BN2NNM001 | OM1 1 Fiber 900um Buffered Pigtail ST - 1 Meter |
| NKFP51BN2NNM001 | OM2 1 Fiber 900um Buffered Pigtail ST - 1 Meter |
| NKFPX1BN2NNM001 | OM3 1 Fiber 900um Buffered Pigtail ST - 1 Meter |
| NKFP91BN2NNM001 | OS2 1 Fiber 900um Buffered Pigtail ST - 1 Meter |

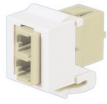
* 2 meter pigtails available for these parts. For 2 meter configuration, replace last digit with "2". For example, NKFPX1BN3NNM002.

NetKey Fiber Optic Pigtail Kits

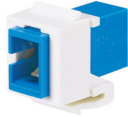


| Part Number | Description |
|----------------------------|---|
| LC to pigtail (OS2) | |
| NKFP91BN1NKM001 | NK 1-fiber OS2 LC to pigtail, 900µm tight buffered cable, 1m (12-color pigtail set) |
| LC to pigtail (OM3) | |
| NKFPX1BN1NKM001 | NK 1-fiber OM3 LC to pigtail, 900µm tight buffered cable, 1m (12-color pigtail set) |
| LC to pigtail (OM4) | |
| NKFPZ1BN1NKM001 | NK 1-fiber OM4 LC to pigtail, 900µm tight buffered cable, 1m (12-color pigtail set) |

NetKey™ Fibre Optic Adapters



NKDLCMIW



NKSCMZIW



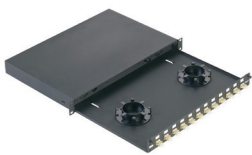
NKSTMIW

| Part Number | Description | Colour |
|--------------------|---|-----------|
| LC Adapters | | |
| NKDLCMIW | Keystone module supplied with one LC Sr./Jr. SFF multimode duplex adapter with phosphor bronze split sleeves. | Off White |
| NKDLCMZIW | Keystone module supplied with one LC Sr./Jr. SFF singlemode duplex adapter with zirconia ceramic split sleeves. | Off White |
| SC Adapters | | |
| NKSCMIW | Keystone module supplied with one SC multimode simplex adapter with phosphor bronze split sleeve. | Off White |
| NKSCMZIW | Keystone module supplied with one SC singlemode simplex adapter with zirconia ceramic split sleeve. | Off White |
| ST Adapters | | |
| NKSTMIW | Keystone module supplied with one ST multimode simplex adapter with phosphor bronze split sleeve. | Off White |

For standard colours other than IW (Off White), replace suffix with BL (Black), EI (Electric Ivory), IG (International Grey) WH (White) or AQ (Aqua).

NetKey™ Fibre Enclosures

- Factory configured with 6, 12, or 24 duplex LC or SC adapters for fast and easy cabling and installation
- Slide-out drawer slides forward a full 300mm for service access to all fibre terminations, connections and/or splices
- Mounting hardware and fiber routing accessory kit included
- Supports fusion splicing with appropriate slack storage and cable management provisions
- Simple two-piece, all-metal body construction for easy and economical installation with no loose components to misplace; improved protection over plastic fibre drawers



NKFD1W12EIDLC

| Part Number | Description |
|--|--|
| SC Adapters* | |
| NKFD1W6AQDSC | Pre-loaded fiber drawer with 6 SC aqua duplex adapters |
| NKFD1W6BLDSC | Pre-loaded fiber drawer with 6 SC black duplex adapters |
| NKFD1W6EIDSC | Pre-loaded fiber drawer with 6 SC electric ivory duplex adapters |
| NKFD1W6BUDSCZ | Pre-loaded fiber drawer with 6 SC blue duplex adapters with zirconia ceramic split sleeve |
| * For a 12 adapter enclosure, replace the 6 with 12. | |
| LC Adapters** | |
| NKFD1W12AQDLC | Pre-loaded fiber drawer with 12 LC aqua duplex adapters |
| NKFD1W12BLDLC | Pre-loaded fiber drawer with 12 LC black duplex adapters |
| NKFD1W12EIDLC | Pre-loaded fiber drawer with 12 LC electric ivory duplex adapters |
| NKFD1W12BUDLCZ | Pre-loaded fiber drawer with 12 LC blue duplex adapters with zirconia ceramic split sleeve |

** For a 24 adapter enclosure, replace the 12 with 24.

NetKey® Patch Panels

- Mount to standard TIA/EIA 19" racks
- Punchdown patch panels meet all industry performance standards for Category 6A, 6 and 5e
- Modular patch panels accept all NetKey® Modules
- Molded patch panels made of strong polymer material, with port numbering front and back
- Optional angled versions available for high density installations
- Strain relief bars assist in cable management and bend radius control



NK6XPPG24Y
NK6PPG24Y
NK5EPPG24Y



NKA6XPPG24Y
NKA6PPG24Y
NKA5EPPG24Y



NK6PPG12WY
NK5EPPG12WY

| Part Number | Description |
|-------------|-------------|
|-------------|-------------|

Punchdown Patch Panels* Category 6A

| | |
|-------------|--|
| NK6XPPG24Y | Category 6A punchdown patch panel, 24 port, 1 RU. |
| NK6XPPG48Y | Category 6A punchdown patch panel, 48 port, 2 RU. |
| NKA6XPPG24Y | Category 6A angled punchdown patch panel, 24 port, 1 RU. |
| NKA6XPPG48Y | Category 6A angled punchdown patch panel, 48 port, 2 RU. |
| NK6XPP24P | Category 6A molded, flat, punchdown patch panel, 24 port, 1RU. |
| NK6XPP48P | Category 6A molded, flat, punchdown patch panel, 48 port, 2RU. |
| NK6XPPN24P | Category 6A molded, flat, punchdown patch panel, 24-port, 1 RU with no labels. |
| NK6XPPN48P | Category 6A molded, flat, punchdown patch panel, 48-port, 1 RU with no labels. |

Category 6

| | |
|------------|--|
| NK6PPG12WY | Category 6, 12-port punchdown patch panel. Mounts to wall with standard 89D bracket (WB89D). |
| NKA6PPG24Y | Category 6, 24-port, angled punchdown patch panel, 1 RU. |
| NKA6PPG48Y | Category 6, 48-port, angled punchdown patch panel, 2 RU. |
| NK6PPG24Y | Category 6, 24-port, punchdown patch panel, 1 RU. |
| NK6PPG48Y | Category 6, 48-port, punchdown patch panel, 2 RU. |
| NK6PP24P | Category 6, 24-port, molded punchdown patch panel, 1 RU. |
| NK6PP48P | Category 6, 48-port, molded punchdown patch panel, 2 RU. |
| NK6PPN24P | Category 6 molded, flat, punchdown patch panel, 24-port, 1 RU with no labels. |
| NK6PPN48P | Category 6 molded, flat, punchdown patch panel, 48-port, 1 RU with no labels. |

Category 5e

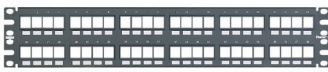
| | |
|-------------|---|
| NK5EPPG12WY | Category 5e, 12-port punchdown patch panel. Mounts to wall with standard 89D bracket (WB89D). |
| NKA5EPPG24Y | Category 5e, 24-port, angled punchdown patch panel, 1 RU. |
| NKA5EPPG48Y | Category 5e, 48-port, angled punchdown patch panel, 2 RU. |
| NK5EPPG24Y | Category 5e, 24-port, punchdown patch panel, 1 RU. |
| NK5EPPG48Y | Category 5e, 48-port, punchdown patch panel, 2 RU. |
| NK5EPP24P | Category 5e, 24-port, molded punchdown patch panel, 1 RU. |
| NK5EPP48P | Category 5e, 48-port, molded punchdown patch panel, 2 RU. |
| NK5EPPN24P | Category 5e molded, flat, punchdown patch panel, 24-port, 1 RU with no labels. |
| NK5EPPN48P | Category 5e molded, flat, punchdown patch panel, 48-port, 1 RU with no labels. |

*Punchdown patch panels are color-coded for T568A and T568B wiring schemes. Punchdown tools found on page 13.

NetKey® Patch Panels (continued)



NKPPA24FMY
NKPPA48FMY



NKPP24FMY
NKPP48FMY



SRBM19BLY



TLBP2S-V

Modular Patch Panels

| | |
|------------|---|
| NKFP12W | 12-port modular patch panel with front removable faceplate. Mounts to wall with standard 89D bracket (WB89D). |
| NKFP24Y | 24-port modular patch panel with front removable faceplate, 1 RU. |
| NKMP24Y | 24-port flush-mount modular patch panel, 1 RU. |
| NKFP48Y | 48-port modular patch panel with front removable faceplate, 2 RU. |
| NKMP48Y | 48-port flush-mount modular patch panel, 2 RU. |
| NKPPA24FMY | 24-port flush mount angled modular patch panel, 1 RU. |
| NKPPA48FMY | 48-port flush mount angled modular patch panel, 2 RU. |
| NKPP24FMY | 24-port flush mount modular patch panel, 1 RU. |
| NKPP48FMY | 48-port flush mount modular patch panel, 2 RU. |
| NKPP48HDY | 48-port high-density flush-mount patch panel supplied with 6 eight-port rear-mounted faceplates, 1 RU. |
| NKPPA48HDY | 48-port high-density angled flush-mount patch panel supplied with 6 eight-port rear-mounted faceplates, 1 RU. |

Wall Mount Bracket

| | |
|-------|---|
| WB89D | Wall mount bracket. Ideal for use with 12-port punchdown or modular patch panels. |
|-------|---|

Strain Relief Bars

| | |
|-----------|---|
| SRB19BLY | Strain relief bar extends 2" from standard 19" rack for additional cable support. |
| SRBM19BLY | Strain relief bar with six Tak-Ty® Hook & Loop Cable Ties; supports, manages, and provides proper bend radius protection for up to 72 cables. |

Filler Panels

| | |
|----------|---|
| TLBP1S-V | 1 RU tool-less filler panel, 9.52mm (3/8 in.) square holes. |
| TLBP1R-V | 1 RU tool-less filler panel, M5 (#10) or M6 (#12) round tapped holes. |
| TLBP2S-V | 2 RU tool-less filler panel, 9.52mm (3/8 in.) square holes. |
| TLBP2R-V | 2 RU tool-less filler panel, M5 (#10) or M6 (#12) round tapped holes. |
| CPAF1BLY | 1 RU angled filler panel. |
| CPAF2BLY | 2 RU angled filler panel. |

Information taken from updated North America line card, NKLC34

NetKey™ Faceplates

- Accept all NetKey™ Modules
- Available in a variety of port densities
- Optional labels for easy port identification



NKFPLUKF2SAW



NKFPLUKF4SAW



NK2HSFIWY



NK4HSFIWY

| Part Number | Description | Colour |
|----------------|--|--------------|
| UK | | |
| NKFPLUKF2SAW | Single gang, 86mm x 86mm, shuttered faceplate with label and icon slots. Accepts two NetKey™ Modules. Includes two M3.5-0.5 x 30mm panhead mounting screws. | Arctic White |
| NKFPLUKF4SAW | Single gang, 86mm x 86mm, shuttered faceplate with label and icon slots. Accepts four NetKey™ Modules. Includes two M3.5-0.5 x 30mm panhead mounting screws. | Arctic White |
| Italian | | |
| NK2HSFIWY | Single gang, horizontal, sloped faceplate with labels. Accepts two NetKey™ Modules. | Off White |
| NK4HSFIWY | Single gang, horizontal, sloped faceplate with labels. Accepts four NetKey™ Modules. | Off White |

NetKey™ Faceplate Kits



NKUKS2AW



NKUKS4AW-2G



NKUKS2SAW



NKUKS4SAW-2G

| Part Number | Description | Colour |
|--------------|--|--------------|
| UK | | |
| NKUKS2AW | Single gang, sloped faceplate kit with labels. Kit includes one 86 x 86mm faceplate frame and sloped insert. Accepts two NetKey™ Modules. | Arctic White |
| NKUKS4AW-2G | Double gang, sloped faceplate kit with labels. Kit includes one 146mm x 86mm faceplate frame and two sloped inserts. Accepts four NetKey™ Modules. | Arctic White |
| NKUKS2SAW | Single gang, sloped, shuttered faceplate kit with labels. Kit includes one 86mm x 86mm faceplate frame and one sloped, shuttered insert. Accepts two NetKey™ Modules. | Arctic White |
| NKUKS4SAW-2G | Double gang, sloped, shuttered faceplate kit with labels. Kit includes one 146mm x 86mm faceplate frame and two sloped, shuttered inserts. Accepts four NetKey™ Modules. | Arctic White |

NetKey™ Faceplate Kits (continued)



NKFS2AW



NKFS2SAW



NKAGS2AW



NKAGS2SAW



NKDS2EW



NKDS2SEW



NKFD66S2SEW



NKLNCLS2EW



NKLNCLS2SEW

| Part Number | Description | Colour |
|---|---|----------------|
| French, Spanish, Belgian and Portuguese | | |
| NKFS2AW | Single gang, sloped faceplate kit. Kit includes one 45mm x 45mm faceplate frame and one sloped insert. Accepts two NetKey™ Modules. | Arctic White |
| NKFS2SAW | Single gang, sloped, shuttered faceplate kit. Kit includes one 45mm x 45mm faceplate frame and one sloped, shuttered insert. Accepts two NetKey™ Modules. | Arctic White |
| German, French, Spanish, Portuguese and Danish | | |
| NKAGS2AW | Single gang, sloped faceplate kit with labels. Kit includes one 50mm x 50mm faceplate frame and one sloped insert. Accepts two NetKey™ Modules. | Arctic White |
| NKAGS2SAW | Single gang sloped, shuttered faceplate kit with labels. Kit includes one 50mm x 50mm faceplate frame and one sloped, shuttered insert. Accepts two NetKey™ Modules. | Arctic White |
| Danish | | |
| NKDS2EW | Single gang, sloped, faceplate kit with labels. Kit includes one 71.1mm x 50.4mm faceplate frame and one sloped insert. Accepts two NetKey™ Modules. | European White |
| NKDS2SEW | Single gang, sloped, shuttered faceplate kit with labels. Kit includes one 71.1mm x 50.4mm faceplate frame and one sloped insert. Accepts two NetKey™ Modules. | European White |
| NKFD66S2SEW | Single gang, sloped, shuttered faceplate kit. Compatible with LK Opus 66* frame. Kit includes one 58.8mm x 58.8mm faceplate frame and one sloped, shuttered insert. Ideal for in-wall and surface mount box installations. Accepts two NetKey™ Modules. | European White |
| NKLNCLS2EW | Single gang, sloped, faceplate kit with labels. Compatible with LK Clic'line* frame. Kit includes one 71.3mm x 45mm faceplate frame and one sloped insert. Accepts two NetKey™ Modules. | European White |
| NKLNCLS2SEW | Single gang, sloped, shuttered, faceplate kit with labels. Compatible with LK Clic'line* frame. Kit includes one 71.3mm x 45mm faceplate frame and one sloped, shuttered insert. Accepts two NetKey™ Modules. | European White |

*Opus 66 and Clic'line are trademarks of Lauritz Knudsen.

NetKey™ Inserts, Frames and Adapters



NKHS2AW-X



NKHS2SAW-X



CBUGAWY



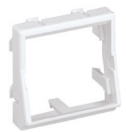
CBUGAW-2GY



CBAGAW



FCFPAW



CBFAW



NKBTAL1WH-X



NKBTA1WH-X



NKFA1SAW-X



NK6CSSAW-X



NK6CSAW-X

| Part Number | Description | Colour |
|-------------|-------------|--------|
|-------------|-------------|--------|

Inserts

| | | |
|------------|--|--------------|
| NKHS2AW-X | 1/2 size, sloped modular insert. Accepts two NetKey™ Modules. | Arctic White |
| NKHS2SAW-X | 1/2 size, sloped, shuttered modular insert. Accepts two NetKey™ Modules. | Arctic White |

Frames

| | | |
|------------|---|--------------|
| CBUGAWY | 86mm x 86mm, single gang faceplate frame with label. Accepts one 1/2 size module insert. | Arctic White |
| CBUGAW-2GY | 86mm x 146mm, double gang faceplate frame with labels. Accepts two 1/2 size module inserts. | Arctic White |
| CBAGAW | 50mm x 50mm, single gang faceplate frame with labels. Accepts one 1/2 size module insert. | Arctic White |
| FCFPAW | 80mm x 80mm, faceplate frame accepts all 50mm x 50mm adapters. | Arctic White |

Adapters

| | | |
|-------------|--|--------------|
| CBFAW | 45mm x 45mm adapter, accepts one 1/2 size module insert. | Arctic White |
| NKBTAL1WH-X | Adapter with label pocket accepts one NetKey™ module, for Bticino Light series faceplates. | White |
| NKBTA1WH-X | Adapter accepts one NetKey™ module, for Bticino Living International series faceplates. | White |
| NKFA1SAW-X | 22.5mm x 45mm 1-Position Shuttered Adapter with label accepts one NetKey™ module. | Off White |
| NK6CSSAW-X | Sloped, shuttered module snaps into standard UK LJU6C floor box mounting plates, faceplates and patch panels and accepts one NetKey™ Module. | Off White |
| NK6CSAW-X | Single gang, 25.4mm x 32mm, shuttered adapter. Compatible with LJU6C frame. Accepts one NetKey™ Module. | Arctic White |

*For standard colours other than White, replace WH in part number with BL (Black) or IW (Off White).

NetKey™ Modular Furniture Faceplate



| Part Number | Description | Colour |
|-------------|--|-----------|
| NK4MFIW | Snap-on modular furniture faceplate. Compatible with modular furniture panel cutout dimensions 34mm to 35.56mm – 67mm to 69mm. Accepts up to four NetKey™ Modules. | Off White |
| NK4MFABL | Snap-on 4-port sloped modular furniture faceplate. Compatible with modular furniture panel cutout dimensions 34mm to 35.56mm – 67mm to 69mm. Accepts up to four NetKey™ Modules. | Black |

For standard colours other than Off White, replace IW in part number with AW (Arctic White), BL (Black), EI (Electric Ivory), WH (White) or IG (International Grey).

NetKey™ Surface Mount Boxes

- Accept all NetKey™ Modules
- Include mounting screws and adhesive tape

- Compatible with Panduit™ LD3, LD5, and LD10 Raceway



NK2BXIW-A



NK4BXIW-AY



NK6BXIW-AY



CBM-X

| Part Number | Description | Colour |
|-------------|---|-----------|
| NK2BXIW-A | Surface mount box accepts two NetKey™ Modules. | Off White |
| NK4BXIW-AY | Surface mount box accepts four NetKey™ Modules. | Off White |
| NK6BXIW-AY | Surface mount box accepts six NetKey™ Modules. | Off White |
| CBM-X | Optional magnet for mounting on metal surfaces. Compatible with NK2BXIW-A and NK4BXIW-AY. | — |

For surface mount box standard colours other than IW (Off White), replace suffix with AW (Arctic White), EI (Electric Ivory), IG (International Grey) or WH (White).

NetKey™ Audio/Video Modules and Inserts



NKFIW



NKBNCFIYW



NKRSMBIYW



NKRTMRIW



NKRPMRIW



NKSPMIW



NKSVCIW



NKBPBIYW



NK35MSSIW



NK35MSCIW

| Part Number | Description | Colour |
|-------------|-------------|--------|
|-------------|-------------|--------|

F-Type Module

| | | |
|-------|---|-----------|
| NKFIW | Keystone module supplied with F-type 3 GHz coupler. | Off White |
|-------|---|-----------|

50 Ohm BNC Coax Module

| | | |
|-----------|---|-----------|
| NKBNCFIYW | Keystone module supplied with 50 ohm industry standard coax bulkhead coupler. | Off White |
|-----------|---|-----------|

RCA Modules

| | | |
|-----------|---|-----------|
| NKRSMRIYW | Keystone module supplied with RCA solder type connector. Inserts available in multiple colours. | Off White |
|-----------|---|-----------|

| | | |
|----------|--|-----------|
| NKRTMBIW | Keystone module supplied with RCA pass-through connector. Inserts available in multiple colours. | Off White |
|----------|--|-----------|

| | | |
|----------|---|-----------|
| NKRPMRIW | Keystone module supplied with RCA punchdown connector. Inserts available in multiple colours. | Off White |
|----------|---|-----------|

S-Video Modules

| | | |
|---------|---|-----------|
| NKSPMIW | Keystone module supplied with SVHS punchdown connector. | Off White |
|---------|---|-----------|

| | | |
|---------|---|-----------|
| NKSVCIW | Keystone module supplied with S-Video pass-through connector. | Off White |
|---------|---|-----------|

5-Way Binding Post Module

| | | |
|----------|---|-----------|
| NKBPBIYW | Keystone module supplied with 5-way binding post. | Off White |
|----------|---|-----------|

3.5mm Stereo Connector

| | | |
|-----------|--|-----------|
| NK35MSSIW | Keystone module supplied with 3.5mm (1/8") stereo solder type headset connector. | Off White |
|-----------|--|-----------|

| | | |
|-----------|--|-----------|
| NK35MSCIW | Keystone module supplied with 3.5mm (1/8") stereo headset coupler. | Off White |
|-----------|--|-----------|

[^]For RCA modules, replace second R (red), with B (black), Y (yellow), or W (white) for alternate insert colors.
^{^^}For alternate color, replace second B (Black) with R (Red).

For standard colours other than IW (Off White), replace suffix with AW (Arctic White), EI (Electric Ivory), WH (White), IG (International Grey) or BL (Black). 5-Way Binding Post Module (NKBP[^]IYW) only available in EI (Electric Ivory) and WH (White).

NetKey™ Audio/Video Modules and Inserts (continued)



NKHDMIW



NKUSBAAIW



NKBMIW-X



CHR3RGBIW



CHD9CIWY

| Part Number | Description | Colour |
|-------------------------------|--|-----------|
| HDMI Coupler | | |
| NKHDMIW | Keystone module supplied with one HDMI 2.0 Type A female to female coupler module. | Off White |
| USB Coupler | | |
| NKUSBAAIW | Keystone module supplied with one USB 2.0 female A to female A coupler module. | Off White |
| Blank Module | | |
| NKBMIW-X | Blank keystone module reserves space for future use. | Off White |
| RCA Inserts | | |
| CHR3RGBIW | 1/3 insert supplied with three RCA pass-through couplers. Inserts are red, green and blue. Ideal for component video. | Off White |
| CHR3WYRIW | 1/3 insert supplied with three RCA pass-through couplers. Inserts are white, yellow and red. Ideal for composite video or left/right stereo. | Off White |
| D-Subminiature Inserts | | |
| CHD9CIWY | 1/3 insert supplied with 9-pin female to female coupler. | Off White |
| CHD15HDCIWY | 1/3 insert supplied with 15-pin female to female coupler. | Off White |
| CHD15HDSCIWY | 1/3 insert supplied with 15-pin HD screw down DB connector mounted to printed circuit board. SVGA compatible. | Off White |

^For RCA modules, replace second R (red), with B (black), Y (yellow), or W (white) for alternate insert colors.

^^For alternate color, replace second B (Black) with R (Red).

For standard colours other than IW (Off White), replace suffix with AW (Arctic White), EI (Electric Ivory), WH (White), IG (International Grey) or BL (Black). 5-Way Binding Post Module (NKBP^IWY) only available in EI (Electric Ivory) and WH (White).

Termination Tools



PDT110



NKSPB



CJT



JR-PAN-2



CGJT

| Part Number | Description |
|--|--|
| Pan-Punch™ Termination Tool | |
| PDT110 | Single pair punchdown tool and blade terminates and cuts UTP cable in one operation. Ideal for use with Pan-Punch™ Punchdown System. |
| PDTH110 | Replacement blade for single pair punchdown tool (PDT110). |
| NetKey™ Jack Module Termination Tools | |
| JR-PAN-2* | Fluke** JackRapid Termination Tool for Category 6 and Category 5e NetKey™ Punchdown Modules. |
| CJT-X | Termination tool for Category 3 NetKey™ Leadframe Jack Modules. |
| CGJT | Terminates Giga-TXTM TP style jack modules. |
| Punchdown Base | |
| NKSPB | Base used to assist in terminating punchdown modules. |

*Fluke JackRapid Termination Tool available through distribution.

Visit www.fluke.com to locate a local distributor.

**Fluke is a registered trademark of Fluke Corporation.

Identification and Labeling Systems

- Variety of labelling systems and labels enable quick and easy network identification



LS8EQ-KIT



LS8EQ



LS8E



LS8E-KIT



TDP43ME



S100X150VAC
and
S100X150VA1Y

| Part Number | Description |
|-------------|-------------|
|-------------|-------------|

PanTher™ LS8EQ and Cougar™ LS9Q Hand-Held Thermal Transfer Printers

| | |
|---------------|---|
| LS8EQ-KIT-ACE | Includes LS8EQ hand-held printer with QWERTY keypad, PANTHERLINK Software, one cassette of S100X150VAC self-laminating labels, six AA alkaline batteries, LS8-CASE, LS8-PCKIT, LS8-IB, LS8-WS, quick reference card, and operator's manual and AC power adapter for Europe. |
| LS8EQ-KIT | Includes LS8EQ hand-held printer with QWERTY keypad, PANTHERLINK Software, one cassette of S100X150VAC self-laminating labels, six AA alkaline batteries, LS8-CASE, LS8-PCKIT, LS8-IB, LS8-WS, quick reference card, and operator's manual. |
| LS8EQ | Includes hand-held printer with QWERTY keypad, PANTHERLINK™ Software, one cassette of S100X150VAC self-laminating labels, six AA alkaline batteries, and quick reference card. |

PanTher™ LS8E Hand-Held Thermal Transfer Printer and Accessories

| | |
|-------------|--|
| LS8E | LS8E printer, one cassette of self-laminating labels, six AA alkaline batteries and quick reference card. |
| LS8E-KIT | LS8E printer, one cassette of self-laminating labels, six AA alkaline batteries, rigid carrying case, LS8-PCKIT, LS8-IB, operator's manual and quick reference card. |
| S100X150VAC | Self-laminating, white vinyl label for use with LS8E printer. |

Thermal Transfer Desktop Printer and Accessories

| | |
|--------------|---|
| TDP43ME/E | 300 dpi printer; includes printer, Panduit® Easy-Mark Labeling Software, RMEH4BL hybrid black ribbon, USB cable, user manual, quick start card, driver disk, and the following power cords: EuroPlug, Swiss, UK, and Japan JIS 8303 3-pin; for use outside N.A. |
| S100X150VA1Y | Self-laminating, white vinyl label for use with thermal transfer desktop printer. |

For complete identification offering, reference the Panduit Physical Infrastructure Systems Catalogue (SA-NCCB51) or visit www.panduit.com.

Racks and Cable Management

- Cable management products and accessories maintain bend radius control and cable performance while bundling and securing cable to prevent snags and stress from over bending

| Part Number | Description |
|--------------|---|
| ER4P23 | 4 post EIA rack with #12-24 threaded rails. Dimensions: 2134mm X 515mm X 584mm (84.0"H X 20.3"W X 23.0"D) |
| WMPV45E | NetRunner™ Front and Rear Vertical Cable Manager with dual hinged cover, wire retainers and side mount brackets. 45 RU. |
| WMPSE | PatchLink™ Front and Rear Horizontal Cable Manager with dual hinged cover. 1 RU. |
| WMP1E | PatchLink™ Front and Rear Horizontal Cable Manager with dual hinged cover. 2 RU. |
| CMPH1 | OpenAccess™ Front and Rear Horizontal Cable Manager with optional snap on cover. 1 RU. |
| CMPH2 | OpenAccess™ Front and Rear Horizontal Cable Manager with optional snap on cover. 2 RU. |
| CMPHF1 | OpenAccess™ Front Only Horizontal Cable Manager with optional snap on cover. 1 RU. |
| SRM19FM1 | Rack mount shelve, 13.6 kg capacity, 1 RU. |
| SRM19FM2 | Rack mount shelve, 22.6 kg capacity, 2 RU. |
| RGS134-1Y | Rack grounding strip (1.9m length, 17mm width, 1.27mm thickness). Provided with 5cc of antioxidant, one grounding sticker, and three each M6 x 12mm and #12-24 x 1/2" thread-forming screws. |
| RGS134-10-1Y | 10 rack grounding strips (1.9m length, 17mm width, 1.27mm thickness). Provided with 5cc of antioxidant, one grounding sticker, and 30 each M6 x 12mm and #12-24 x 1/2" thread-forming screws. |
| RGCBNJ660P22 | Common bonding network to rack jumper kit. Provided with HTAP that bonds to MCBN sizes ranging from 16mm ² - 25mm ² . |

For complete cable management and bonding/grounding offering, reference the Panduit Physical Infrastructure Systems Catalogue (SA-NCCB51) or visit www.panduit.com.



PANDUIT™

Panduit Corp.
World Headquarters
Tinley Park, IL 60487

800.777.3300

www.panduit.com