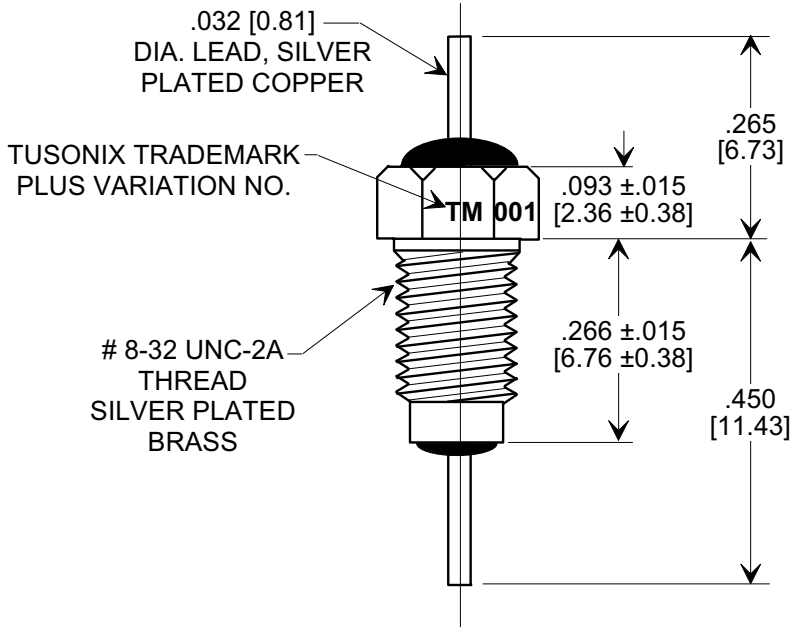
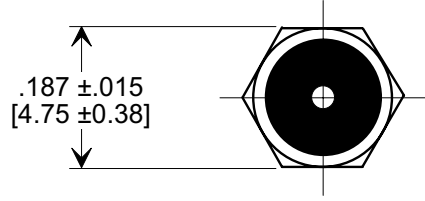
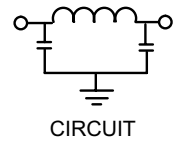
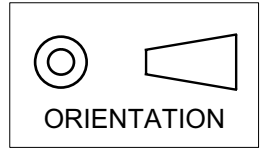


**MARKETING SALES DRAWING**

**DIMENSIONS IN INCHES - DO NOT SCALE THIS DRAWING**  
**DIMENSIONS IN METRIC - [ ]**

Electrical Testing  
 per Tusonix standard  
 test plans and Mil-Std-202  
 Test Methods.



**NOTES:**

- TUSONIX STANDARD PART NUMBER: 4251-001.  
 TUSONIX RoHS COMPLIANT PART NUMBER: 4251-001 LF.  
 CUSTOMER MUST SPECIFY STANDARD OR RoHS PART NUMBER WHEN ORDERING.
- PART MARKING: TRADEMARK AND VARIATION NUMBER ON HEX FLATS.  
 STANDARD PART: BLACK INK. RoHS PART: GREEN INK.
- SUPPLIED WITH SILVER PLATED COPPER ALLOY HEX NUT AND INTERNAL TOOTH LOCK WASHER.

15,000	50 VDC	10 GΩ	250 VDC	10 A	5	9	18	45	65	70	70
MIN. CAP.(pf)	+125 °C DC WORKING VOLTAGE	I.R. MIN. @ 100 VDC	DWV	CURRENT	1 MHz	3 MHz	10 MHz	30 MHz	100 MHz	300 MHz	1GHz
MINIMUM NO LOAD INSERTION LOSS (dB) AT 25°C PER MIL-STD-220											

X-2015 Rev-0

<b>REVISION RECORD</b>	Original Release C.O. <b>6611</b> HDIM'S REVISED .81 WAS .812 6.7 WAS 6.75. TITLE CHGD. E.C. 5-26-92	<b>1</b> RDN TO COMP FMT. S.M. 06-03-02	<b>2</b> 20020528-3-02 DWV 250 WAS 125. S.M. 09-22-03	<b>3</b> 20030922-5-03 ADDED NOTES 1-3. S.M. 10-06-05	<b>4</b> 20050927-7-03	--TOLERANCES-- Unless Otherwise Specified	Title <b>MULTI LAYER BUSHING STYLE EMI FILTER</b>	
						DECIMAL ± .031 [0.79]	Drawn S. M. 02-28-02	
						ANGLES ±	Scale 4 X	
						<b>TUSONIX</b> TUCSON, ARIZONA	Approved T.C. 02-58-02	
						<b>A</b>	<b>4251-001</b>	