

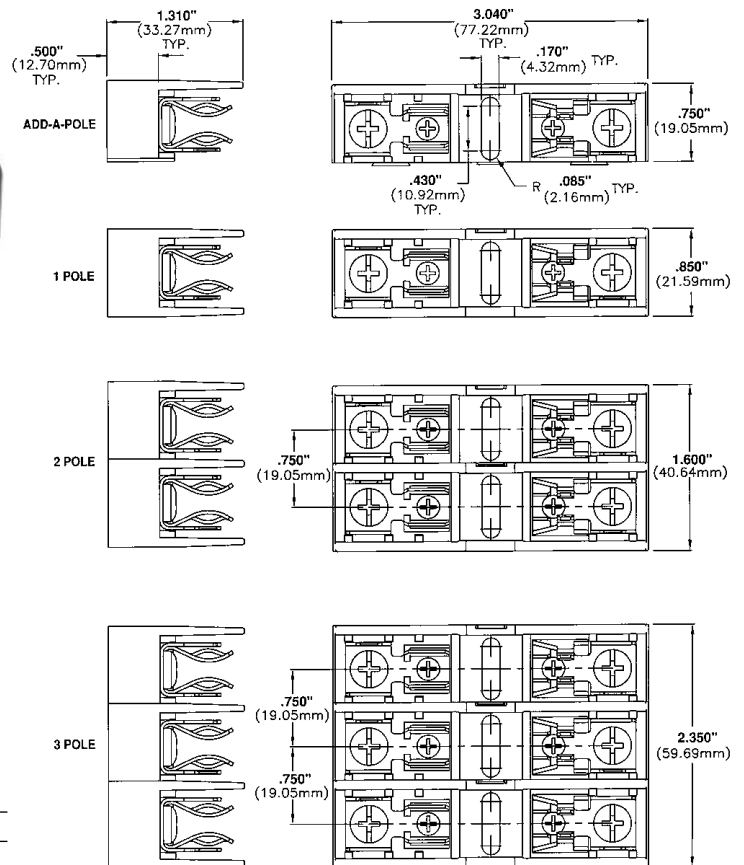
# Class CC Fuseblocks

## 600 Volt, 30 Amps

# BCA Series



Dimensional Data All dimensions ±.015" (.38mm)



**Catalog Symbol:** BCA Series

**Class CC Fuseblocks**

For use with Class CC Fuses (Bussmann LP-CC, KTK-R, and FRQ-R)

**Ampere Rating:** 1/10 to 30

**Voltage Rating:** 600V

**Withstand Rating:** 200,000A, RMS Sym.

**Agency Information:**

UL Listed, UL 512, Guide IZLT, File E14853

CSA Certified, C22.2 No. 39, Class 6225-01, File 47235

**UL Flammability:** 94 VO

**Materials:** Base - Thermoplastic

Clips - Bright tin-plated bronze

Catalog Data

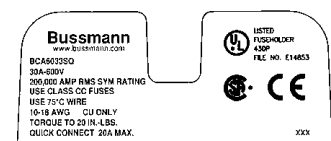
|      |       | Terminal Type             |                                    |           |
|------|-------|---------------------------|------------------------------------|-----------|
| Amps | Poles | Screw with Quick Connect* | Pressure Plate with Quick Connect* |           |
|      |       | Adder                     | BCA603ASQ                          | BCA603APO |
| 1/10 | 1     | BCA6031SQ                 | BCA6031PQ                          |           |
| to   | 2     | BCA6032SQ                 | BCA6032PQ                          |           |
| 30   | 3     | BCA6033SQ                 | BCA6033PQ                          |           |

Wire Range  
CU Only  
#10-#18



\*QUICK CONNECT RATED FOR 20A MAXIMUM.

FUSEBLOCK MARKING (EXAMPLE SHOWN)



Fuse blocks feature a unique adder block which can be snapped onto 1-, 2-, or 3-pole blocks to form multi-pole segmented blocks of as many poles as desired.

CE CE logo denotes compliance with European Union Low Voltage Directive (50-1000Vac, 75-1500Vdc). Refer to Data Sheet: 8002 or contact Bussmann Application Engineering at 636-527-1270 for more information.

The only controlled copy of this Data Sheet is the electronic read-only version located on the Bussmann Network Drive. All other copies of this document are by definition uncontrolled. This bulletin is intended to clearly present comprehensive product data and provide technical information that will help the end user with design applications. Bussmann reserves the right, without notice, to change design or construction of any products and to discontinue or limit distribution of any products. Bussmann also reserves the right to change or update, without notice, any technical information contained in this bulletin. Once a product has been selected, it should be tested by the user in all possible applications.