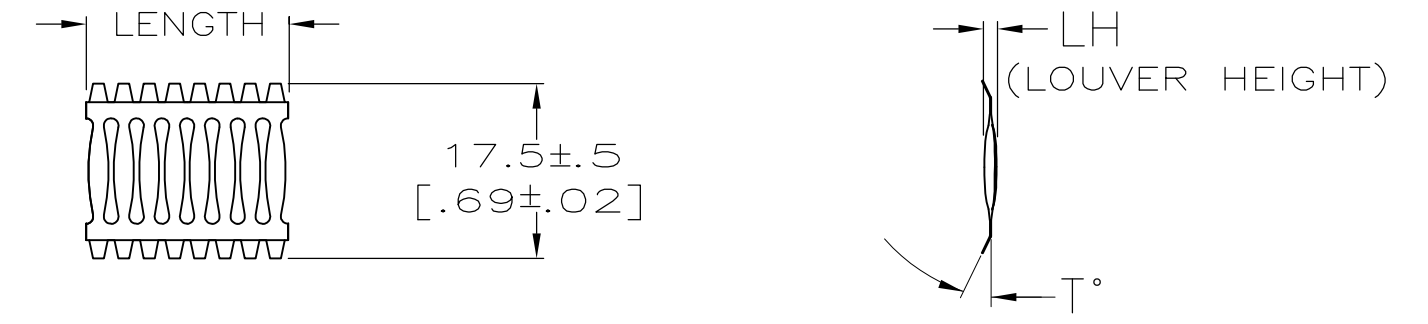
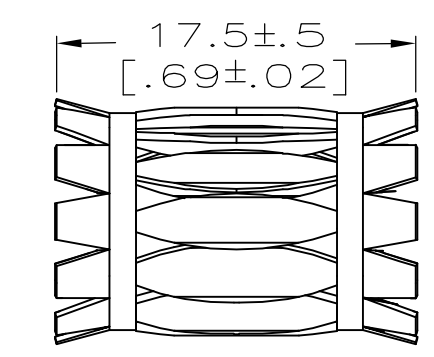


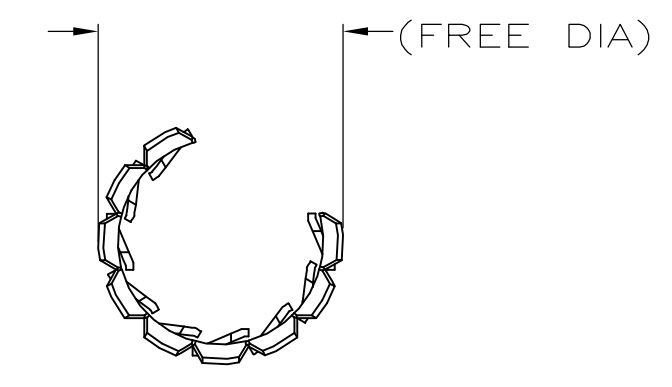
(FREE DIA)	LH	STYLE	T°	MATING PIN Ø	REF	NUM LOUV	PLATING	MAT'L NOTE	MAT'L THK	REF	PART NUMBER	
[.45]	[.050]	A	15	9.01	[.355]	117-2	12	0.15	[.006]	01210	5-192013-0	OBSOLETE
[.52]	[.046]	A	15	8.97	[.353]	13UNPL	12	0.08	[.003]	01126	4-192013-9	△14
[.42]	[.050]	A	15	7.92	[.312]	10UNPL	13	0.15	[.006]	01116	4-192013-8	△14
[.42]	[.052]	A	15	7.92	[.312]	107-2	12	0.20	[.008]	01118	4-192013-7	
[.42]	[.050]	A	15	7.92	[.312]	106-2	12	0.15	[.006]	01217	4-192013-6	OBSOLETE △14
[.42]	[.050]	A	15	7.92	[.312]	107-2	12	0.15	[.006]	01117	4-192013-5	
[.42]	[.050]	A	15	7.92	[.312]	10UNPL	12	0.15	[.006]	01266	4-192013-4	OBSOLETE △14
[.42]	[.050]	A	15	7.92	[.312]	107-2	12	0.10	[.004]	01281	4-192013-3	
		C	15	--		877-2	12	0.15	[.006]	01030	4-192013-2	OBSOLETE
1.48	[.052]	A	45	31.8	[1.250]	397-2	12	0.20	[.008]	01219	4-192013-1	OBSOLETE
1.48	[.052]	A	45	31.8	[1.250]	39UNPL	12	0.20	[.008]	01218	4-192103-0	△14
1.48	[.050]	A	45	31.8	[1.250]	397-2	12	0.15	[.006]	01209	3-192013-9	
1.45	[.050]	A	45	30.1	[1.187]	387-2	12	0.15	[.006]	01193	3-192013-8	
1.21	[.050]	A	45	26.2	[1.032]	337-2	12	0.15	[.006]	01214	3-192013-7	OBSOLETE △14
1.15	[.050]	A	45	25.0	[.984]	317-2	12	0.15	[.006]	01319	3-192013-6	
1.02	[.050]	A	45	21.6	[.850]	277-2	12	0.15	[.006]	01208	3-192013-5	
1.05	[.050]	A	45	21.4	[.842]	287-2	12	0.15	[.006]	01165	3-192013-4	OBSOLETE
[.92]	[.052]	A	45	19.1	[.750]	247-2	12	0.20	[.008]	01300	3-192013-3	△14
	[.050]	C	45			555-2	12	0.15	[.006]	01041	3-192013-2	
	[.050]	C	45			55UNPL	12	0.15	[.006]	01044	3-192013-1	
											3-192013-0	OBSOLETE
	[.050]	C	15			487-2	12	0.15	[.006]	01043	2-192013-9	
	[.050]	C	15			417-2	12	0.15	[.006]	01027	2-192013-8	
	[.050]	C	15			417-2	12	0.10	[.004]	01028	2-192013-7	
	[.050]	C	15			407-2	12	0.15	[.006]	01243	2-192013-6	OBSOLETE
	[.050]	C	15			407-2	12	0.10	[.004]	01047	2-192013-5	△14
	[.050]	C	45			357-2	12	0.15	[.006]	01033	2-192013-4	
	[.050]	C	15			357-2	12	0.15	[.006]	01032	2-192013-3	
	[.050]	C	15			357-2	12	0.10	[.004]	01299	2-192013-2	
											2-192013-1	OBSOLETE
											2-192013-0	OBSOLETE
	[.050]	C	15			337-2	12	0.15	[.006]	01026	1-192013-9	OBSOLETE
	[.050]	C	15			337-2	12	0.10	[.004]	01025	1-192013-8	△14
											1-192013-7	
		C	15			207-2	12	0.15	[.006]	01035	1-192013-6	OBSOLETE
	[.050]	C	15			194	12	0.15	[.006]	01051	1-192013-5	OBSOLETE △14
		C	15			197-2	12	0.15	[.006]	01031	1-192013-4	OBSOLETE
	[.050]	C	15			177-2	12	0.15	[.006]	01059	1-192013-3	OBSOLETE
	[.050]	C	15			147-2	12	0.15	[.006]	01053	1-192013-2	△14
	[.050]	C	15			134	12	0.15	[.006]	01065	1-192013-1	
	[.050]	C	15			137-2	12	0.15	[.006]	01077	△14 1-192013-0	
	[.050]	C	15			127-2	12	0.15	[.006]	01055	△14 1-192013-9	
											1-192013-8	OBSOLETE
	[.050]	C	15			121-3	12	0.10	[.004]	01069	△14 1-192013-7	
	[.050]	C	15			117-2	12	0.15	[.006]	01057	△14 1-192013-6	
	[.050]	C	15			104	12	0.15	[.006]	01056	△14 1-192013-5	
	[.050]	C	15			107-2	12	0.15	[.006]	01058	△14 1-192013-4	
	[.050]	C	15			101-2	12	0.10	[.004]	01046	△14 1-192013-3	
	[.050]	C	15			97-2	12	0.15	[.006]	01081	△14 1-192013-2	
	[.050]	C	15			57-2	12	0.15	[.006]	01045	△14 1-192013-1	



STYLE C  
(STRIP)



STYLE A  
(FEMALE)

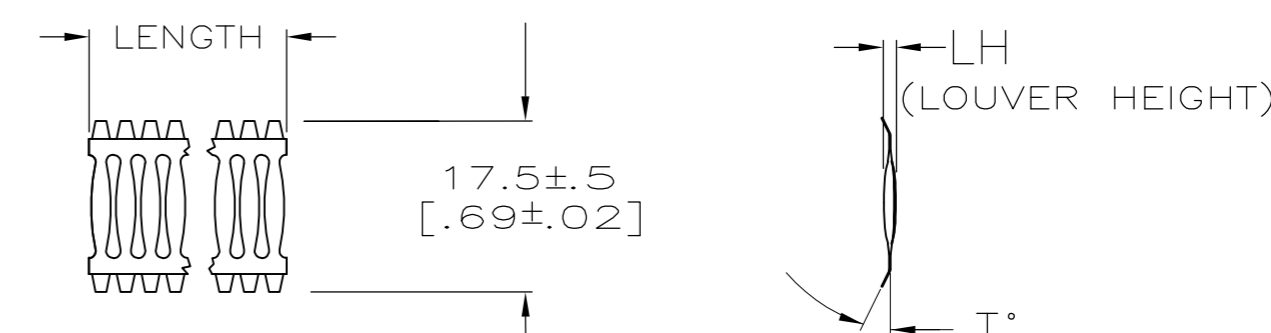


1. FINISH-GOLD PLATE 2.03-2.54 μm [80-100 μ"] THICK.
  2. FINISH-NICKEL PLATE 1.02-2.03 μm [40-80 μ"] THICK.
  3. FINISH-NICKEL PLATE 1.27-1.91 μm [50-75 μ"] THICK.
  4. FINISH-TIN PLATE 7.62-15.24 μm [300-600 μ"] THICK.
  5. FINISH-SILVER PLATE 18.78 μm [700-1000 μ"] THICK.
  6. FINISH-GOLD PLATE 0.25-0.51 μm [10-20 μ"] THICK.
  7. FINISH-SILVER PLATE 5.08-10.16 μm [200-400 μ"] THICK.
  - 8.
  - 9.
  - 10.
  11. PLATING NOTES ARE TO BE INTERPRETED AS FOLLOWS:  
5-7 AS 5 OVER 7.
  12. MATERIAL-CDA172 BeCu.
  13. MATERIAL-STAINLESS STEEL.
- △14 OBSOLETE PARTS: OBSOLETE CIS STREAMLINING PER D.RENAUD/D.SINISI

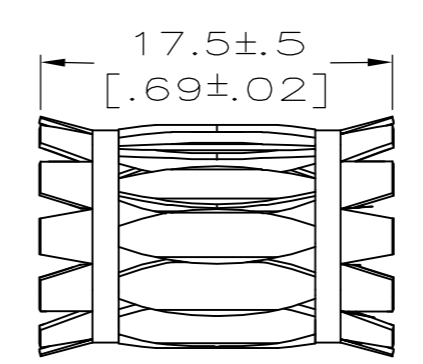
THIS DRAWING IS A CONTROLLED DOCUMENT.		DWN RA JAYNE 07-01-91	TE Connectivity	
DIMENSIONS: MM(INCHES)		CHK G.STEINHAUER 07-01-91		
TOLERANCES UNLESS OTHERWISE SPECIFIED:		APVD G.STEINHAUER 07-01-91	NAME	
0 PLC ± - 1 PLC ± - 2 PLC ± 0.5 [.02] 3 PLC ± 0.25 [.010] 4 PLC ± - - ANGLES ± - -		PRODUCT SPEC		CONTACT BAND,FEMALE
MATERIAL SEE TABLE		APPLICATION SPEC		RESTRICTED TO
FINISH SEE TABLE		WEIGHT -		SIZE A2
CUSTOMER DRAWING		SCALE NTS		CAGE CODE 00779
		DRAWING NO G-192013		SHEET 1 OF 2
		REV G2		

(FREE DIA)	LH	STYLE	T°	MATING PIN Ø	REF	NUM LOUV	PLATING	MAT'L NOTE	MAT'L THK	REF	PART NUMBER
.89	.052	A	15	19.1	[.750]	23	UNPL	12	0.20	[.008]	01248 9-192013-9
.92	.050	A	15	19.1	[.750]	24	UNPL	13	0.15	[.006]	01203 9-192013-8
.92	.050	A	15	19.1	[.750]	24	6-2	12	0.15	[.006]	01234 9-192013-7
.92	.050	A	15	19.1	[.750]	24	7-2	12	0.15	[.006]	01154 9-192013-6
.92	.050	A	15	19.1	[.750]	24	UNPL	12	0.15	[.006]	01152 9-192013-5
											-- 9-192013-4
.89	.050	A	15	19.1	[.750]	23	7-2	12	0.15	[.006]	01255 9-192013-3
1.75	.050	A	15	19.1	[.750]	23	7-2	12	0.10	[.004]	01279 9-192013-2
.92	.046	A	15	19.1	[.750]	24	7-2	12	0.08	[.003]	01151 9-192013-1
.92	.046	A	15	19.1	[.750]	24	UNPL	12	0.08	[.003]	01297 9-192013-0
.85	.050	A	15	17.4	[.685]	22	7-2	12	0.15	[.006]	01223 8-192013-9
.80	.052	A	15	15.88	[.625]	20	7-2	12	0.20	[.008]	01245 8-192013-8
.80	.052	A	15	15.88	[.625]	20	UNPL	12	0.20	[.008]	01289 8-192013-7
.76	.052	A	15	15.88	[.625]	19	7-2	12	0.20	[.008]	01259 8-192013-6
.76	.052	A	15	15.88	[.625]	19	UNPL	12	0.20	[.008]	01258 8-192013-5
.83	.050	A	15	15.88	[.625]	21	7-2	12	0.15	[.006]	01207 8-192013-4
.80	.050	A	15	15.88	[.625]	20	6-2	12	0.15	[.006]	01317 8-192013-3
.80	.050	A	15	15.88	[.625]	20	7-2	12	0.15	[.006]	01148 8-192013-2
.76	.050	A	15	15.88	[.625]	19	7-2	12	0.15	[.006]	01311 8-192013-1
1.50	.050	A	15	15.88	[.625]	20	7-2	12	0.10	[.004]	01273 8-192013-0
.80	.050	A	15	15.57	[.613]	20	7-2	12	0.15	[.006]	01202 7-192013-9
.73	.052	A	15	14.27	[.562]	18	7-2	12	0.20	[.008]	01143 7-192013-8
.45	.050	A	15	9.01	[.355]	11	UNPL	12	0.15	[.006]	7-192013-7
.73	.050	A	15	14.0	[.551]	18	7-2	12	0.15	[.006]	01264 7-192013-6
.70	.050	A	15	14.0	[.551]	17	7-2	12	0.15	[.006]	01141 7-192013-5
.69	.052	A	15	12.7	[.500]	16	7-2	12	0.20	[.008]	01137 7-192013-4
.69	.052	A	15	12.7	[.500]	16	UNPL	12	0.20	[.008]	01247 7-192013-3
.69	.050	A	15	12.7	[.500]	16	UNPL	13	0.15	[.006]	01244 7-192013-2
.69	.050	A	15	12.7	[.500]	16	7-2	12	0.15	[.006]	01206 7-192013-1
.69	.046	A	15	12.7	[.500]	16	7-2	12	0.08	[.003]	01275 7-192013-0
.64	.052	A	15	11.99	[.472]	15	7-2	12	0.20	[.008]	01304 6-192013-9
.55	.050	A	15	11.99	[.472]	14	UNPL	13	0.15	[.006]	01073 6-192013-8
.64	.050	A	15	11.99	[.472]	15	7-2	12	0.15	[.006]	01135 6-192013-7
.64	.050	A	15	11.99	[.472]	15	UNPL	12	0.15	[.006]	01134 6-192013-6
1.25	.050	A	15	11.99	[.472]	15	7-2	12	0.10	[.004]	01286 6-192013-5
.80	.050	A	15	15.88	[.625]	20	UNPL	--	0.15	[.006]	6-192013-4
.67	.046	A	15	12.7	[.500]	16	UNPL	--	0.08	[.003]	6-192013-3
.53	.050	A	15	10.0	[.394]	13	UNPL	--	0.15	[.006]	6-192013-2
.55	.052	A	15	11.1	[.437]	14	7-2	12	0.20	[.008]	01131 6-192013-1
.55	.050	A	15	11.1	[.437]	14	UNPL	13	0.15	[.006]	01246 6-192013-0
.55	.050	A	15	11.1	[.437]	14	7-2	12	0.15	[.006]	01211 5-192013-9
.55	.050	A	15	11.02	[.434]	14	6-2	12	0.15	[.006]	01128 5-192013-8
.55	.050	A	15	11.02	[.434]	14	UNPL	12	0.15	[.006]	01216 5-192013-7
.52	.050	A	15	10.0	[.394]	13	6-2	12	0.15	[.006]	01272 5-192013-6
.52	.050	A	15	10.0	[.394]	13	7-2	12	0.15	[.006]	01205 5-192013-5
.50	.050	A	15	9.53	[.375]	12	7-2	12	0.15	[.006]	01124 5-192013-4
.48	.050	A		9.53	[.375]	12	7-2	12	0.10	[.004]	01268 5-192013-3
.48	.052	A	15	9.07	[.357]	12	7-2	12	0.20	[.008]	01122 5-192013-2
.45	.050	A	15	9.01	[.355]	11	6-2	12	0.15	[.006]	01121 5-192013-1

LOC	DIST	REVISIONS					
FT	0	P	LTR	DESCRIPTION	DATE	DWN	APVD
		-		SEE SHEET 1	-	-	-



STYLE C  
(STRIP)



STYLE A  
(FEMALE)

THIS DRAWING IS A CONTROLLED DOCUMENT.		DWN	RA JAYNE	07-01-91	<b>STE</b>	TE Connectivity	
DIMENSIONS: MM [INCHES]		CHK	G. STEINHAUER	07-01-91		CONTACT BAND, FEMALE	
TOLERANCES UNLESS OTHERWISE SPECIFIED:		APVD	G. STEINHAUER	07-01-91	NAME		
0 PLC ± -		PRODUCT SPEC		SIZE			
1 PLC ± -		APPLICATION SPEC		CAGE CODE		DRAWING NO	
2 PLC ± 0.5 [ .02 ]		MATERIAL		00779		192013	
3 PLC ± 0.25 [ .010 ]		FINISH		G2		RESTRICTED TO	
4 PLC ± -		MATERIAL		A2		-	
ANGLES ± ± -		SEE TABLE		CUSTOMER DRAWING		SCALE	
FINISH		SEE TABLE		SHEET		2 OF 2	
MATERIAL		SEE TABLE		REV		G2	