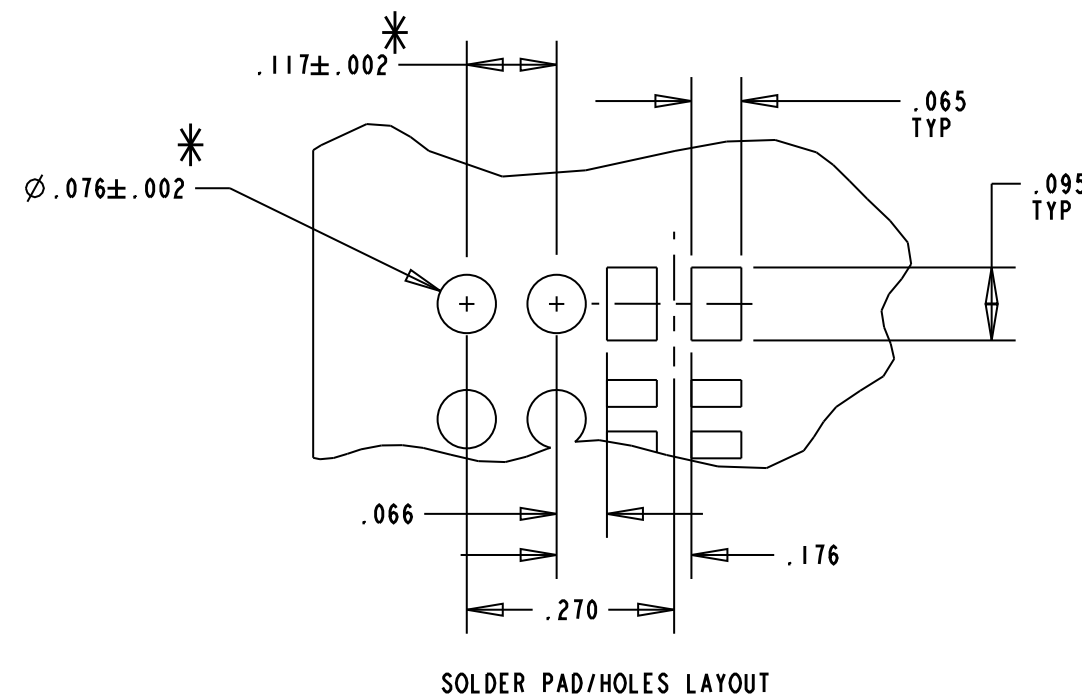
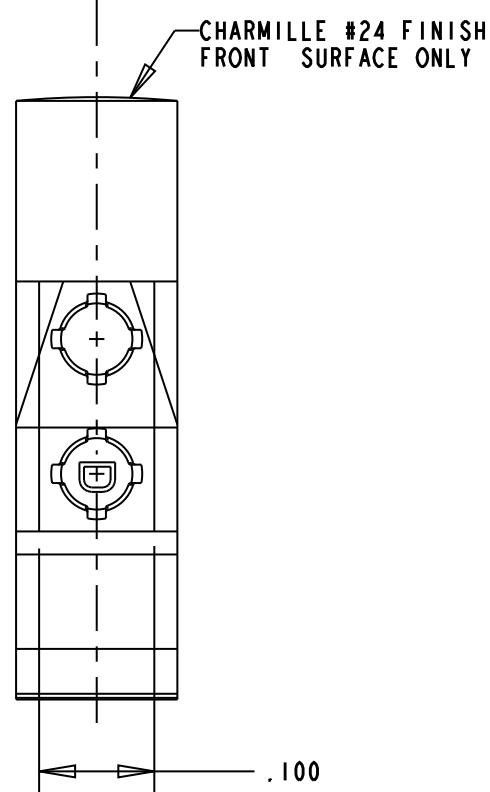
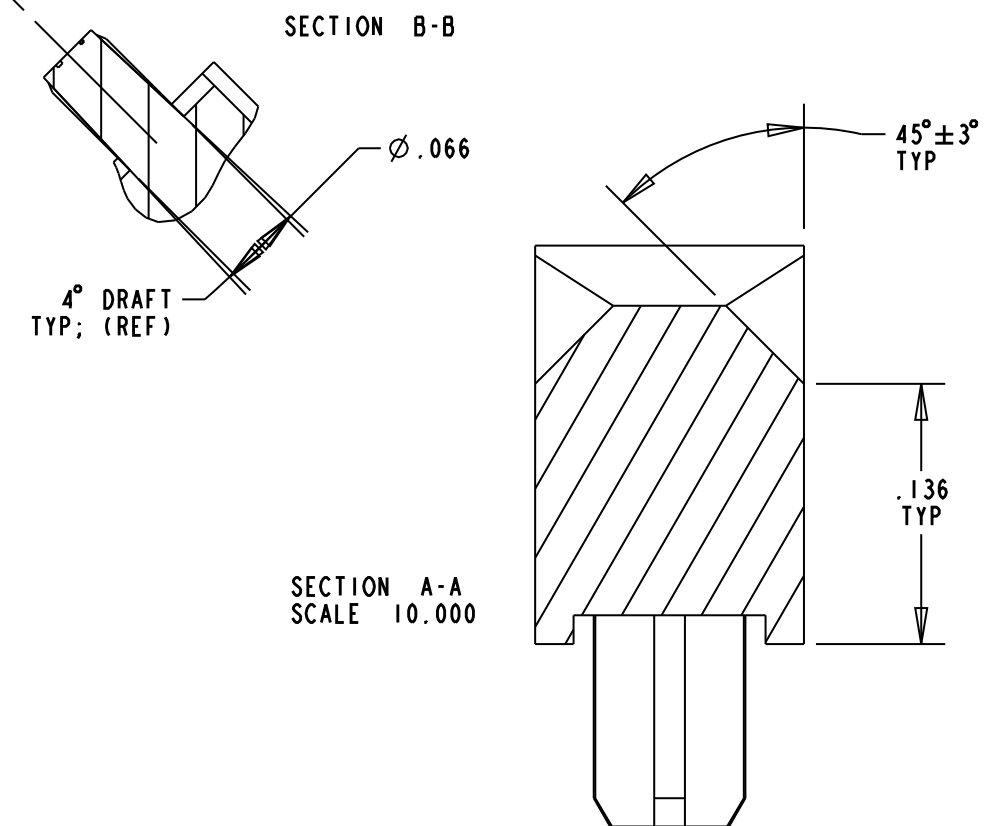
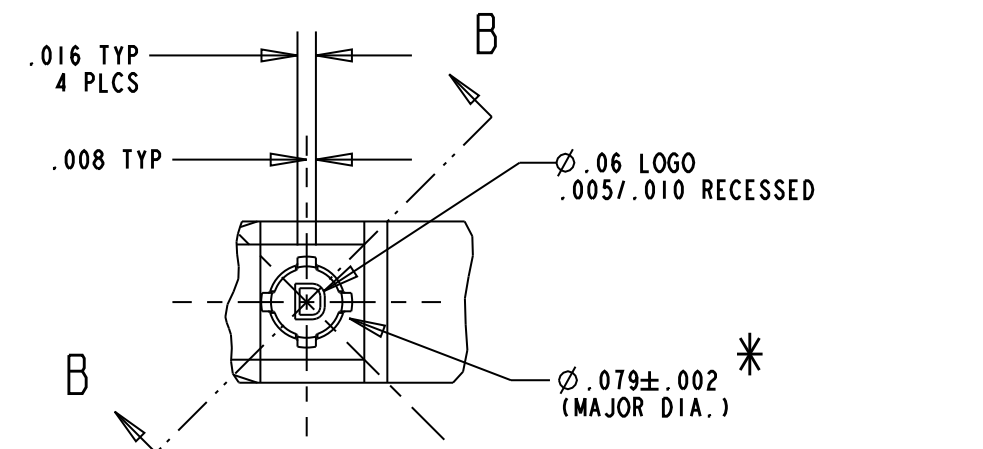
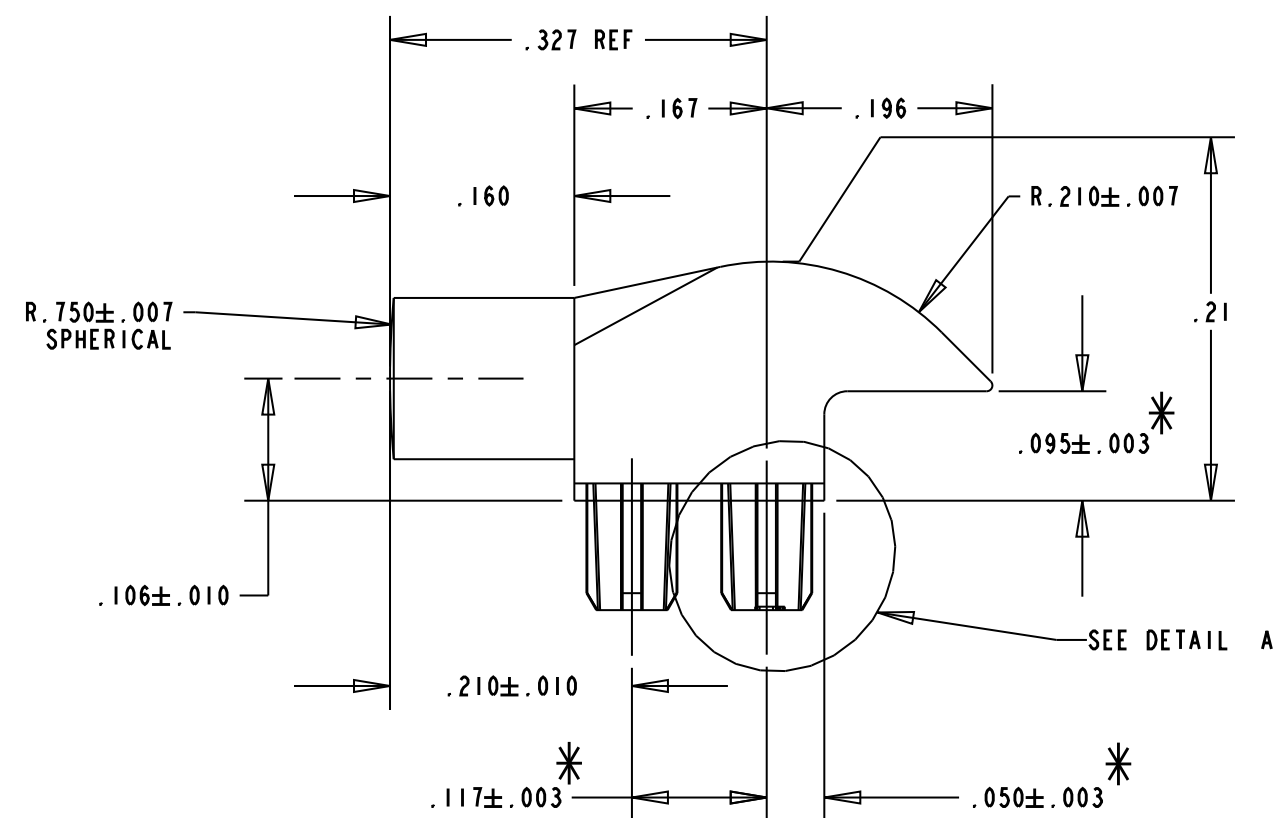
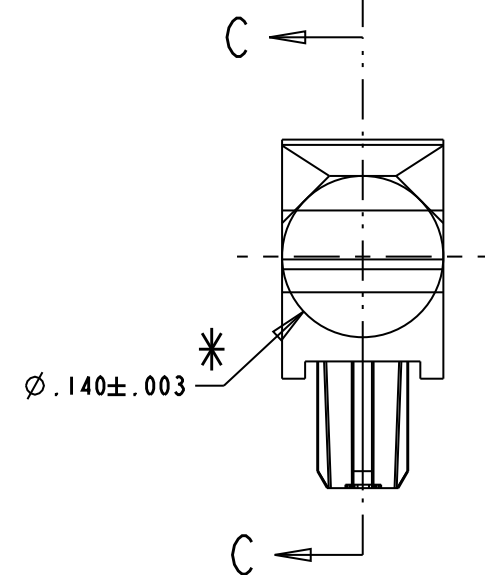
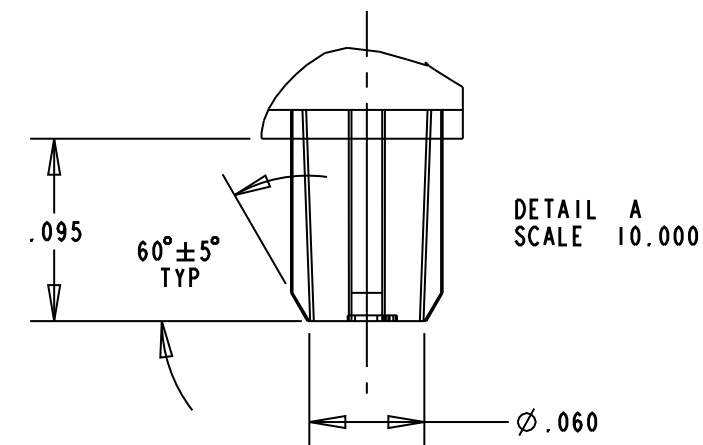
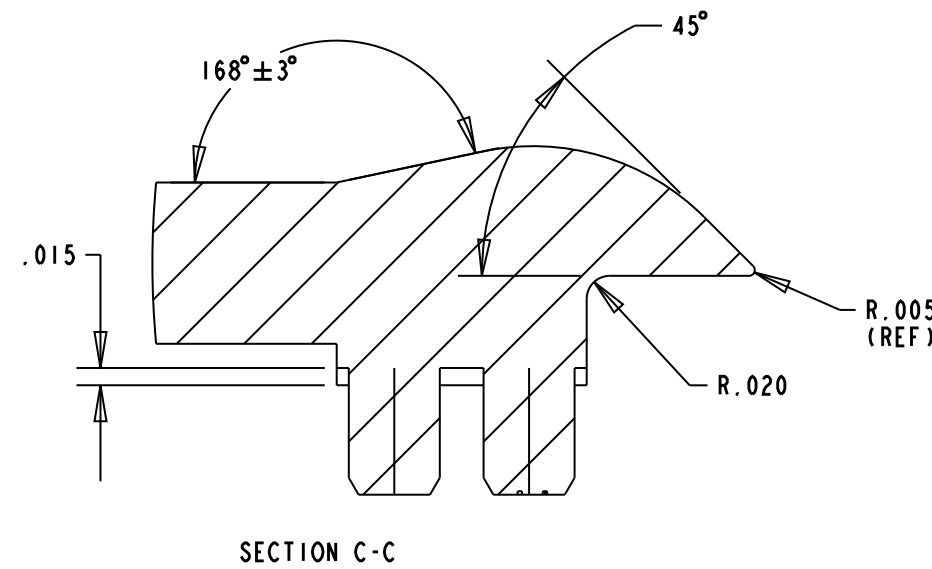
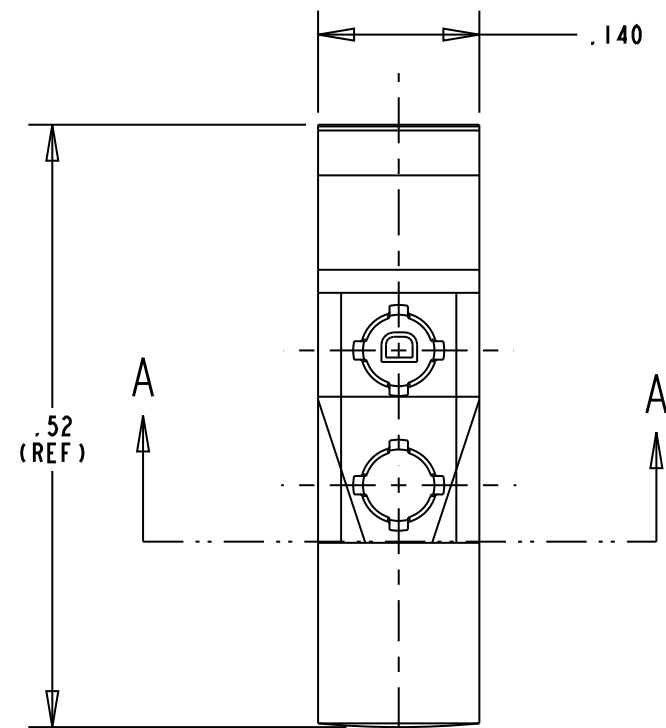
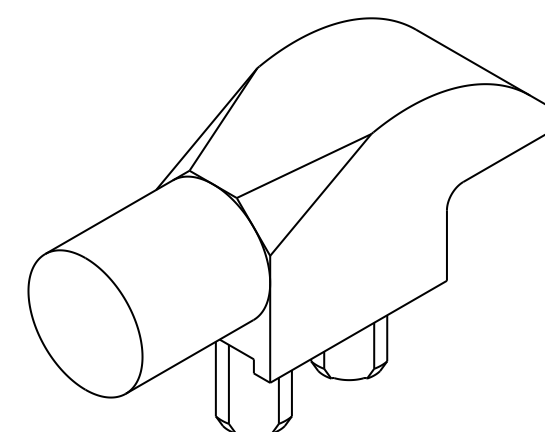


| REV | ECN NO | REVISIONS | DRN | CKD | APP | DATE |
|-----|--------|-----------------------------|-----|-----|-----|---------|
| A | — | NEW RELEASE | TWC | NO | MES | 2-2-06 |
| B | — | ADDED ".106±.010" DIMENSION | AJF | KLJ | JLC | 11-4-09 |



RoHS COMPLIANT 515-1049-802F
 Part Numbers with the "F" suffix ending are RoHS Compliant.
 Packaging is marked with "RoHS Compliant" label or equivalent markings.



SCALE 6.000

- NOTES:
- UNLESS OTHERWISE SPECIFIED, ALL SURFACES MUST HAVE FINISH OF SPI A1 TO A2.
 - UNLESS OTHERWISE SPECIFIED, SINK MARKS & KNOCKOUT MARKS NOT TO EXCEED .003 RECESSED.
 - FLASH NOT TO EXCEED .005.
 - NO BUBBLES IN LIGHTPATH GREATER THAN .003.
 - UNLESS OTHERWISE SPECIFIED, .003 ROUNDS & FILLETS PERMISSIBLE.
 - UNLESS OTHERWISE SPECIFIED, 2 DEGREE DRAFT PERMISSIBLE.
 - MATERIAL TO BE CLEAR, TRANSMISSIVE POLYCARBONATE UL-94V-0 OR EQUIVALENT, AS SPECIFIED BY DIALIGHT ENGINEERING DEPT.
 - *DENOTES CRITICAL DIMENSION OR SPECIFICATION.
 - DIALIGHT PART NUMBER: 515-1049-802F.

| | | |
|---|--------------------------------|----------------------------|
| THIS DRAWING AND THE CONTENTS HEREIN ARE CONFIDENTIAL AND THE SOLE PROPERTY OF DIALIGHT. REPRODUCTION OF THIS DRAWING OR CONSTRUCTION OF ANY PARTS WITHIN THIS DRAWING ARE FORBIDDEN WITHOUT THE WRITTEN CONSENT OF DIALIGHT. | | |
| SCALE: 4.000 | DRAWING NUMBER | REV |
| ALL DIM'S IN: INCHES (MM) | C-17358 | B |
| TOLERANCES: UNLESS OTHERWISE SPECIFIED | TITLE SINGLE ELEMENT LIGHTPIPE | |
| FRACTIONS: ±1/64 | RoHS COMPLIANT | |
| DECIMALS (.XX): ±.01 | MATERIAL | |
| DECIMALS (.XXX): ±.005 | Dialight | |
| DECIMALS (.XXXX): ±.0005 | 1501 ROUTE 34 SOUTH | |
| ANGLES: ±1° | FARMINGDALE, NJ 07727 | |
| FINISH: | FSCM 83330 | SHEET 1 OF 1 FAMILY TABLE: |