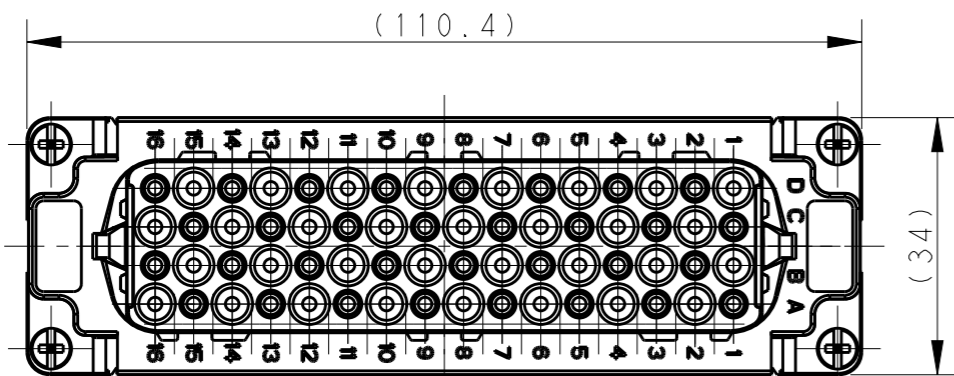


REVISIONS

P	LTR	DESCRIPTION	DATE	DWN	APVD
	A	INITIAL	25AUG2018	BS	CW



4X M3 SCREW RECOMMENDED  
TIGHTENING TORQUE 0.5Nm  
4X M3螺丝, 推荐锁紧力矩0.5Nm

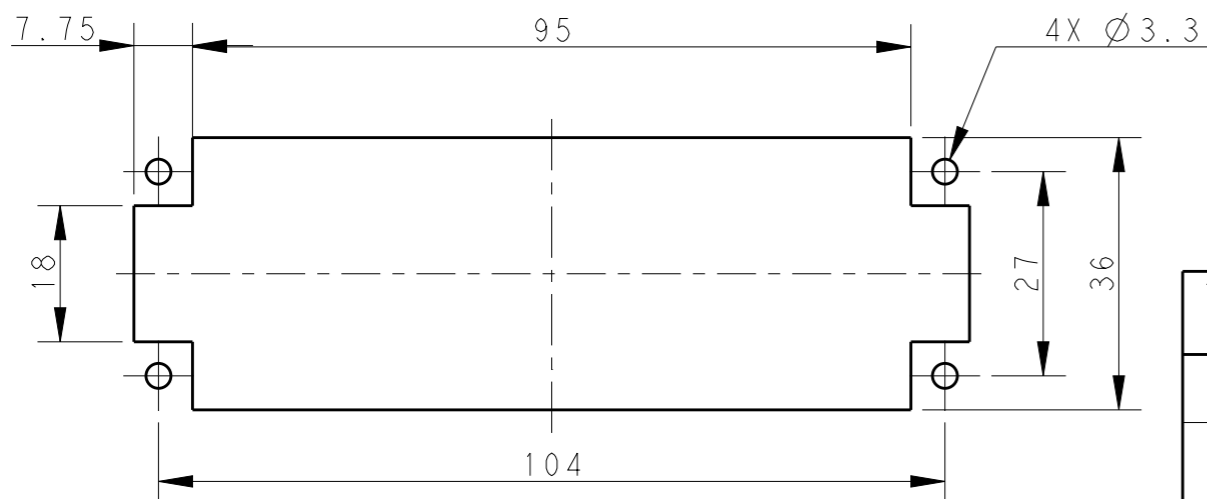
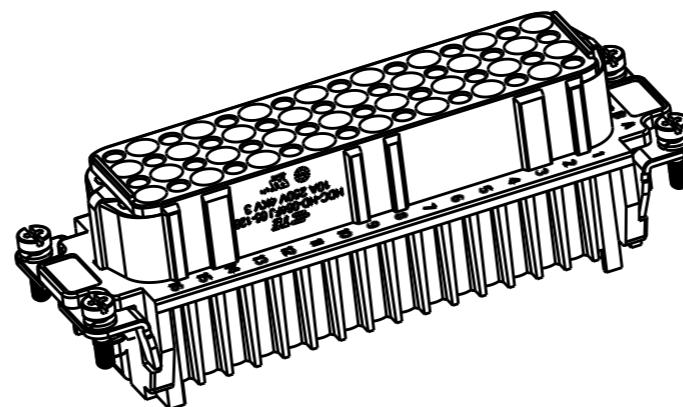
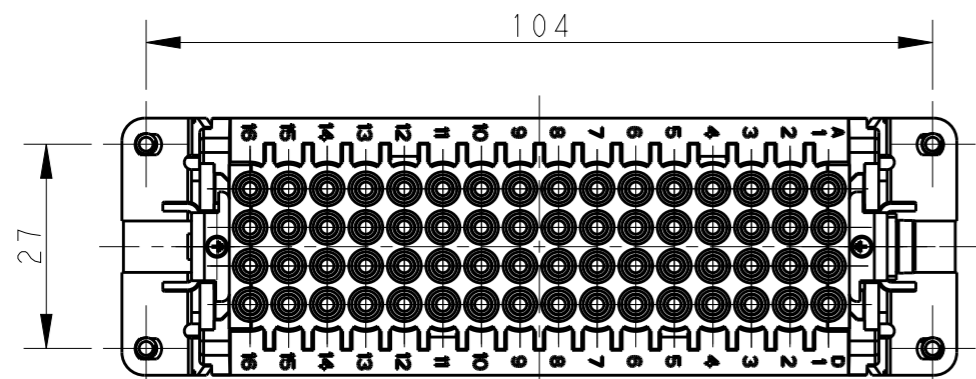
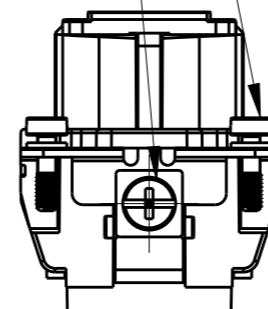
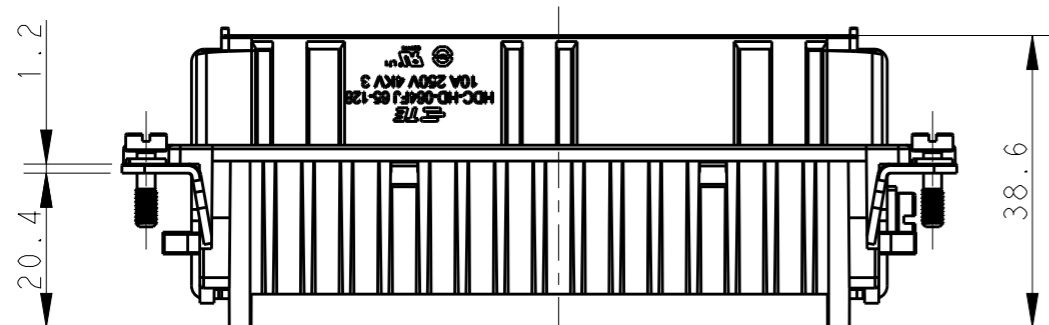
M4 SCREW RECOMMENDED  
TIGHTENING TORQUE 1.2Nm  
M4 螺丝, 推荐锁紧力矩1.2Nm

NOTES:

- TECHNICAL CHARACTERISTICS:  
INSULATION MATERIAL: PC  
RATED VOLTAGE: 250 V  
RATED CURRENT: 10 A  
INSULATION RESISTANCE:  $\geq 400M\Omega$   
RATED IMPULSE VOLTAGE: 4 KV  
POLLUTION DEGREE: 3  
FLAMMABILITY: UL94V-0  
MATING CYCLES: 500 CYCLES  
WIRE RANGE: 0.14-2.5 mm<sup>2</sup> (26-14 AWG)  
CONTACT TYPE: CRIMP CONTACT
- CONTACT NEED TO BE ORDERED SEPARATELY.  
(ORDER No. REFER TO DRAWING: T20200X20XX000)

注释:

- 技术参数:  
绝缘材料: PC  
额定电压: 250V  
额定电流: 10A  
绝缘电阻:  $\geq 400M\Omega$   
额定脉冲电压: 4 KV  
污染等级: 3  
阻燃等级: UL94V-0  
插拔次数: 500次  
接线范围: 0.14-2.5 mm<sup>2</sup> (26-14 AWG)  
接线类型: 冷压接
- 端子需要单独订购.  
(订货号参考图面: T20200X20XX000)



PANEL CUT FOR INSERTS FOR USE  
WITHOUT HOODS/ HOUSINGS  
不用防护外壳时芯件的安装开孔图

T2021282201-100	HD-064-FJ 65-128	HD-064 FEMALE INSERT, STAMPING 65-128 HD-064母插, 卷皮针 65-128
PART NUMBER 零件料号	PART DESCRIPTION 零件描述	

THIS DRAWING IS A CONTROLLED DOCUMENT.		DWN BELL SU 25AUG2018	 TE Connectivity	
DIMENSIONS: mm		CHK GION YAO 25AUG2018		
TOLERANCES UNLESS OTHERWISE SPECIFIED:		APVD CHRIS WANG 25AUG2018	NAME HD-064-FJ 65-128	
0 PLC $\pm$ -		PRODUCT SPEC 108-137042	SIZE A3	
1 PLC $\pm$ -		APPLICATION SPEC 114-137042	CAGE CODE 00779	DRAWING NO T2021282201100
2 PLC $\pm$ -		MATERIAL -	RESTRICTED TO -	SCALE 1:1
3 PLC $\pm$ -		FINISH -	SHEET 1 OF 1	
4 PLC $\pm$ -		WEIGHT -	REV A	
ANGLES $\pm$ -		CUSTOMER DRAWING		