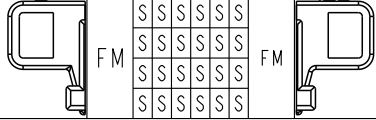
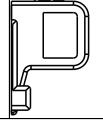
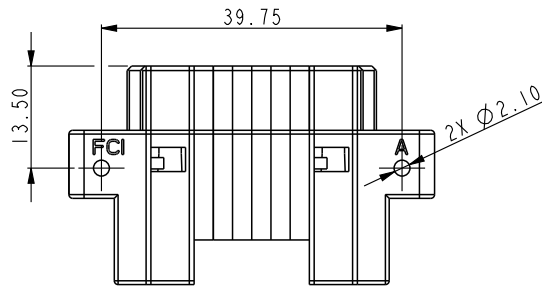
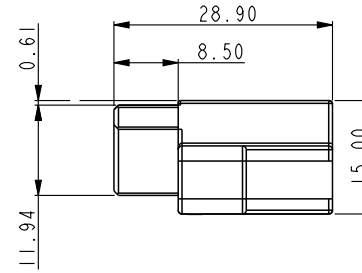
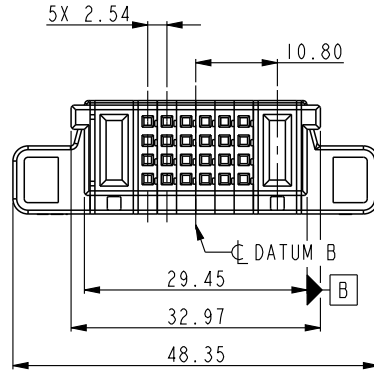
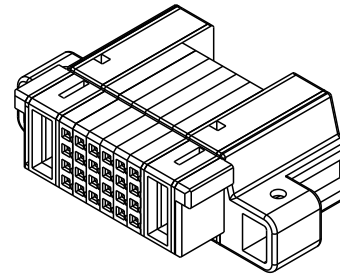
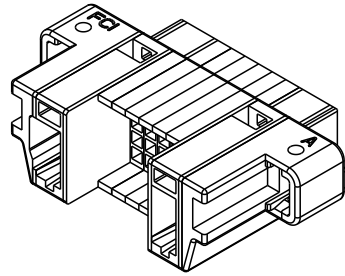


PART NUMBER	Rows	E	POWER		SIGNAL						POWER		E
			P2	6	5	4	3	2	1	P1			
10066440-DGC0084LF	D		FM	S	S	S	S	S	S	S	FM		
	C			S	S	S	S	S	S	S			
	B			S	S	S	S	S	S	S			
	A			S	S	S	S	S	S	S			



CONTACT WIRE TABLE	
CONTACT	WIRE GAUGE
P1	10-14
SIGNAL	22-26
P2	12-14
CONTACT TABLE	
CODE	DESCRIPTION
FM	FIRST MATE CONTACT
LM	LAST MATE CONTACT
S	SIGNAL CONTACT

spec ref		*		dr	Yong Zhang	2016/04/12	<div>projection</div> <div></div>	<div>MM</div> <div></div>	size	A4	scale	1:1	
tolerance std	TOLERANCES UNLESS OTHERWISE SPECIFIED			eng	Yong Zhang	2016/04/18			ecn no	-			
				chr	-	-							
				appr	Caspar Lin	2016/04/18			product family			rel level Released	
surface	<div>✓</div>	linear	0.X	±0.50	<div>Amphenol</div> <div>FCI</div>	title IP + 24S + IP STR			dwg no 10066440-DGC0084LF			rev	A
			0.XX	±0.25									
			0.XXX	±0.10									
		angular	0°	±2°	www.fci.com	cat. no.		*	Product - Customer Drw			sheet 1 of 2	



## Note:

1. Material:thermo plastic,u194 v-0
2. Bulkhead thickness range:0.79-2.54
3. Color:black
4. Applicable components  
Applicable power crimp contact: 10132418-\*\*\*\*\*LF  
Applicable contact secondary lock:10073097-DGC001LF  
Applicable signal contact 76347-DGC302LF  
Applicable latch 10066441-DGC001LF for STR version  
Applicable latch 10089267-DGC018LF for STL version
5. Product Spec: GS-12-474
6. Application Spec: GS-20-0445
7. The part is been sold as loose piece and fci guarantees is the part in compliance with this customer drawing statement. The product spec for cable assembly can be only as the reference document because the testing and spec is based on using fci raw cable and cable asseymble. If the raw cable and cable assembly is outside suppliers sourced by cusotmers, customers or cable assembly suppliers should be fully resposnsible for the cable assy quality.

spec ref		*		dr	Yong Zhang	2016/04/12	<div>projection</div> <div></div>	<div>MM</div> <div></div>	size	A4	scale	1:1	
tolerance std	TOLERANCES UNLESS OTHERWISE SPECIFIED			eng	Yong Zhang	2016/04/18			ecn no -				
				chr	-	-			rel level Released				
				appr	Caspar Lin	2016/04/18			product family				
surface	<div>✓</div>	linear	0.X	±0.50	Amphenol FCi	title IP + 24S + IP STR PwrBlade Cable Conn. Housing				dwg no	10066440-DGC0084LF		rev A
			0.XX	±0.25									
			0.XXX	±0.10									
	angular	0°	±2°	cat. no.		*	Product - Customer Drw		sheet 2 of 2				