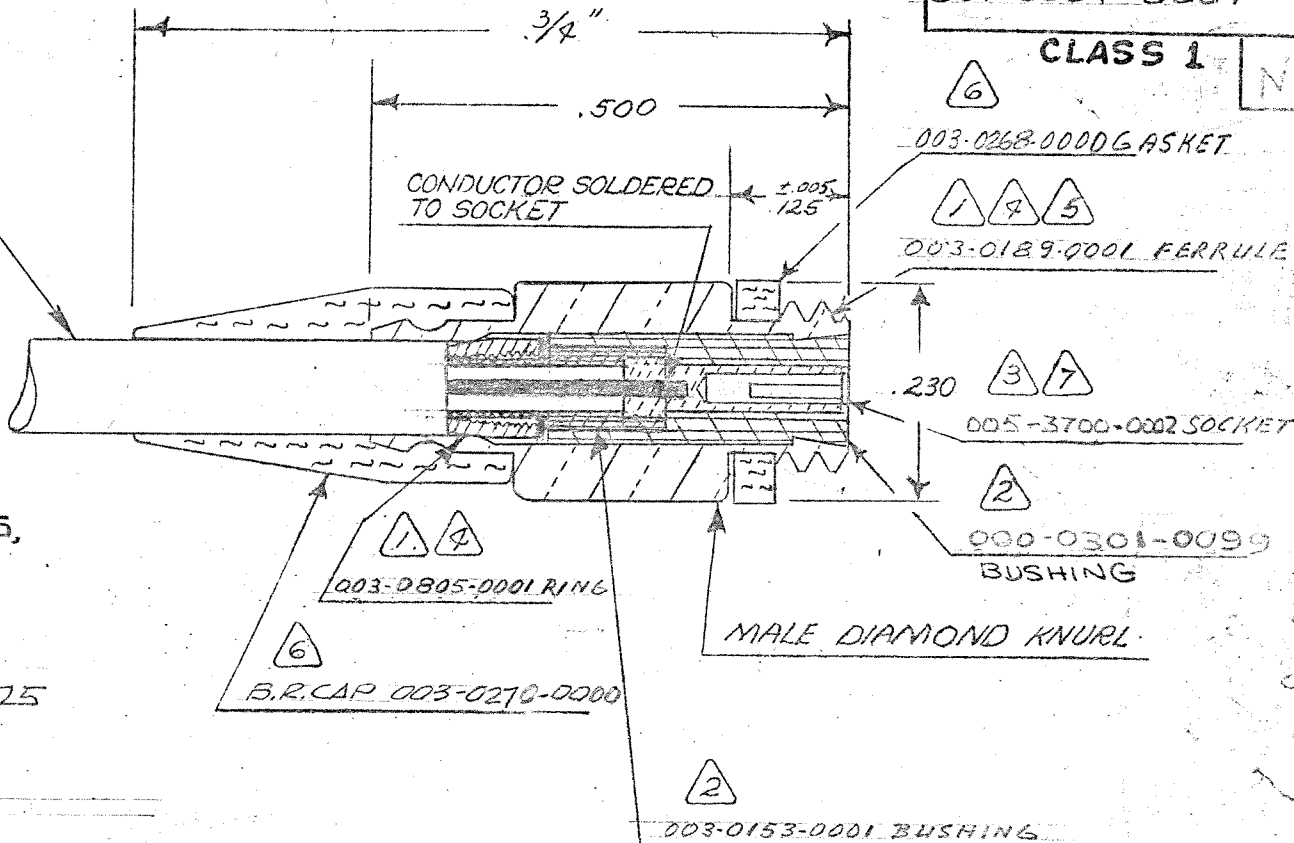


CABLE ACCEPTANCE DIM'S.  
 JACKET DIA. .088 MAX.  
 DIELECTRIC DIA. .038 MAX.  
 CENTER COND. DIA. .015 MAX.

(MATERIAL, FINISH)

- ① FMA BRASS QQ-B-626 COMP. 360
- ② TEFLON PER L-P-4837
- ③ GOLD PLATE PER MIL-G-45204, TYPE II, CL. I
- ④ SILVER PLATE .0002-.0004 PER QQ-S-365, TYPE II, GRADE A.
- ⑤ 10-32UNF-2ATHD
- ⑥ SILICONE RUBBER, ZZ-R-765.
- ⑦ BERYLLIUM COPPER BERYLCO\*33-25

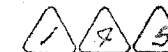


031-0034-0001

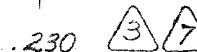
CLASS 1



003-0268-0000 GASKET



003-0189-0001 FERRULE



005-3700-0002 SOCKET



000-0301-0099 BUSHING

MALE DIAMOND KNURL



003-0805-0001 RING



B.R. CAP 003-0270-0000



003-0153-0001 BUSHING

This connector mates with all connectors in A Group, S-50 Series as listed in Microdot Bulletin #43 Assembly instructions see Bulletin #48 Special Microdot Tool 010-0003-0000

Tyco Dwg 1-1532138-6  
 Micro P/N 031-0034-0001

NOTES:

1. 031-0034-0001 SAME AS 31-34

| LET. | REVISION DESCRIPTION                                      | BY | DATE    | APP. |
|------|---|----|---------|------|
| J    | SEE ECD 16625   | TC | 9-20-52 | TC   |
| K    | REVISED & REDRAWN ECD 17442                               | NT | 1/10/53 | NT   |
| L    | 000-0301-0099 WAS 003-0301-0099 (ECO 19413)               | NT | 3/19/53 | NT   |
| M    | B.R. CAP WAS 003-0031-0000 NOTE 6, WAS NEOPRENE ECN 36837 | B  | 3/1/53  | B    |
| N    | ECN 38686 REV. UPDATE                                     | TS | 3/4/53  | TS   |

THESE DRAWINGS AND SPECIFICATIONS ARE THE PROPERTY OF MICRODOT INC. ARE ISSUED IN STRICT CONFIDENCE AND SHALL NOT BE REPRODUCED OR COPIED OR USED AS THE BASIS FOR THE MANUFACTURE OR SALE OF APPARATUS WITHOUT PERMISSION.

STANDARD TOLERANCES UNLESS OTHERWISE SPECIFIED  
 DEC. XXX ± .010  
 FRAC. ± 1/32  
 ANGLES ±  
 ECCENTRICITY  
 MAX. T. I. R.  
 COMMERCIAL TOLERANCES

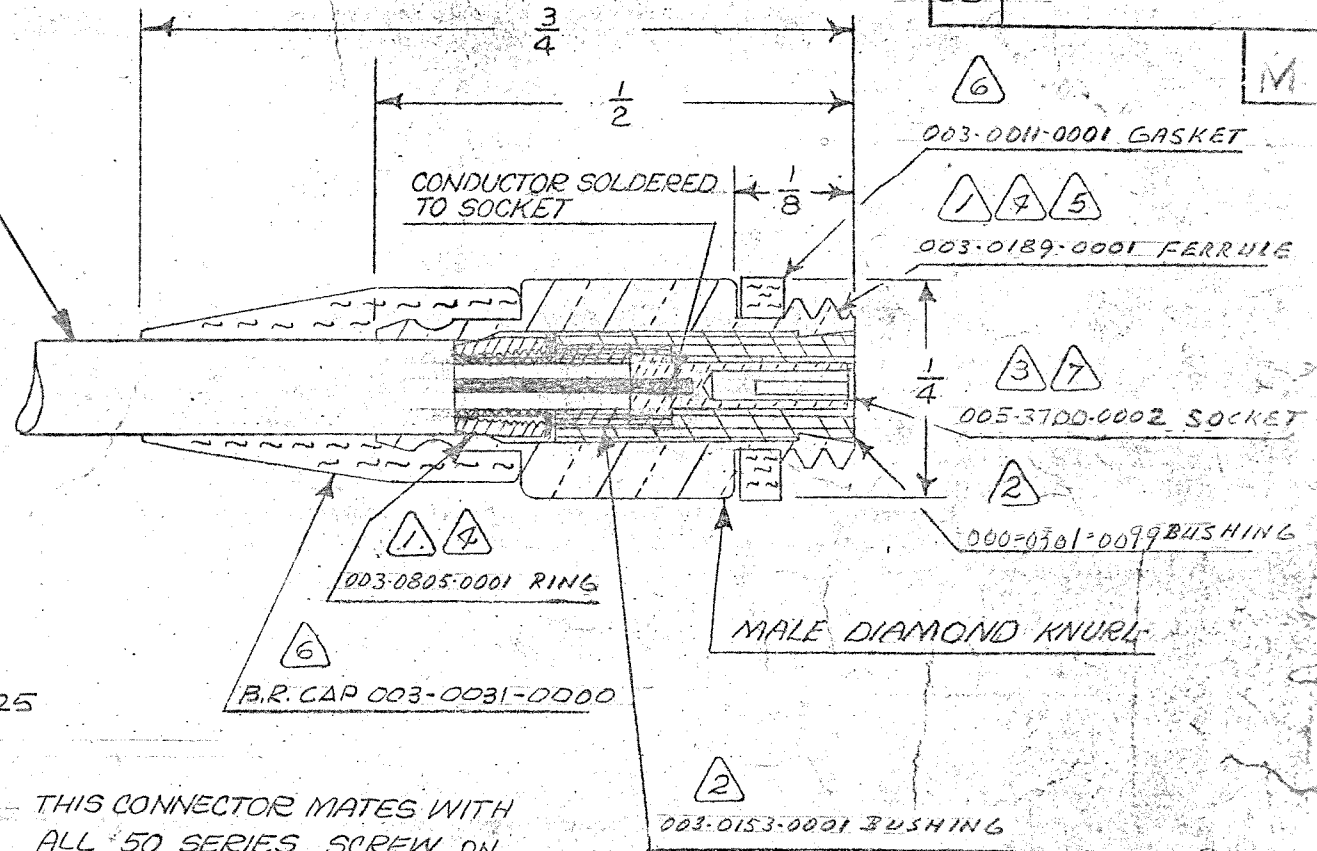
**MICRODOT, INC.**  
 SO. PASADENA, CALIF.

|                            |   |
|----------------------------|---|
| SURFACE TREATMENT<br>NOTED | ENG. APP. <i>[Signature]</i>                            |
| MACHINED FINISH (R.M.S.)   | PROD. APP.<br>CHECKED BY<br>DRAWN BY <i>[Signature]</i> |
| MATERIAL<br>NOTED          | SCALE<br>5X   |
|                            | WT.<br>DATE<br>7-23-54                                  |
| JACK                       | DRAWING NUMBER<br>031-0034-0001                         |

ASSEMBLY NO. REQ'D.  
 NEXT ASSEMBLY

CABLE ACCEPTANCE DIM'S  
 JACKET DIA. .088 MAX.  
 DIELECTRIC DIA. .038 MAX.  
 CENTOR COND. DIA. .015 MAX.

CODE  
 CD 031-0034-0001



(MATERIAL, FINISH)

- ① FM BRASS PER QQ-B-626
- ② TEFLON PER L-P 403
- ③ GOLD PLATE PER MIL-G-45204 TYPE II, CLASS I
- ④ SILVER PLATE .0002-.0004 PER QQ-S-365, TYPE II, GRADE A
- ⑤ 10-32UNF-2AHD
- ⑥ NEOPRENE, MIL-R-3065
- ⑦ BERYLLIUM COPPER BERYLCO 33-25

NOTES:

1. 031-0034-0001 SAME AS 031-0034 E, 31-34

THIS CONNECTOR MATES WITH ALL 50 SERIES SCREW ON TYPE PLUGS AS LISTED IN MICRODOT CATALOG.

1-1532138-6

|   |  |    |         |    |
|---|--|----|---------|----|
| M | ECN 38686 REV. UPDATE  | JK | 3/12    | PS |
| L | REV. LETTER UPDATE ECO 19413   | JK | 8/19/75 | JK |
| K | REVISED & REDRAWN ECO 17442  | NT | 11/1/74 | JK |
| J | SEE ECO 16625  | JK | 7-20-73 | JK |
| H | REV. LETTER UPDATED ECO 16090  | JK | 8/19/75 | JK |
| G | MAT'L & FINISH CALL OUT UP-DATED ADD. CABLE ACC. DIM'S, ECO 7668             | JK | 1/17/63 | JK |
| F | LAMP RING 003-0163 REPLACED BY 003-0805-0001 COMPONENT NO. UP-DATED ECO 6154 | JK | 3/1/67  | JK |
| E | PART NUMBER & B.R. CAP PART NO. UPDATED, ADDED NOTE 1 (ECO 5872)             | EJ | 2/21/67 | JK |

STANDARD TOLERANCES UNLESS OTHERWISE SPECIFIED  
 DEC. ±  
 FRAC. ± 1/32  
 ANGLES ±  
 ECCENTRICITY  
 MAX. T. I. R.  
 HOLE DIA. + .002  
 — .001

**MICRODOT INC.**  
 SOUTH PASADENA, CALIF.

|                   |         |            |       |
|-------------------|---------|------------|-------|
| SURFACE TREATMENT | NOTED   | APP.       | JK    |
| MATERIAL          | NOTED   | APP.       | JK    |
| SCALE             | 1:1     | CHECKED BY |       |
| WT.               |         | DRAWN BY   | M7577 |
| DATE              | 7-15-60 |            |       |
| DRAWING NUMBER    |         |            |       |