

DDFL4U - Double Level Fuse Terminal with fuse link on the top level has a separate feed through terminal at the lower level. This eliminates use of an additional feed through terminal.

In DDFL4U(E), specially designed built in circuit gives light indication in the event of a fuse blow out at the top level. The terminal provides separate feed through connection possibility at the lower level.

Important:

The disconnecting device is not suitable for interrupting load. The supply must be switched off before operating the slide link/lever.

† Fuses are sold separately Altech, see pages 100-101.

* Add required voltage to part number as suffix, i.e. DDFL4U(E)/24 for 24V AC/DC

COLOR BLOCKS
(other than standard grey)

When ordering please add color suffix to Cat. No.

Example for color Red: **Cat.No./R**

Color	Ordering Suffix
Red	R
Yellow	Y
Blue	BU
Green	G
Orange	O
Beige	BG
Dark Brown	DB
Black	BL
White	W

Consult Altech for availability:

Terminal Width	8 mm
Height x Length	66 x 88 mm
Stripping Length	9.5 mm
Insulation Material	Polyamide 6.6
Type of Connection	4 screw clamps & 1 tapped hole for cross connection
LED Voltage	24V AC/DC, 48V AC/DC, 110V AC/DC, 220V AC/DC, 440V AC
Type of Fuse Used	Ø5x20, Ø5x25 mm
Approvals	
Wire Range	22-10 AWG 0.2-4 mm ² 22-10 AWG
Voltage Rating	600 V 800 V 600 V
Current Rating	Top Level 6.3 A 35 A 6.3 A 32 A 6.3 A 35 A
Torque	7 lb-in 0.5 N 7 lb-in
Other Approvals	

Terminal Block

End Plate	
-----------	--

DIN Rail for ordering information refer to pages 90-91

End Stop for ordering information refer to page 92	
--	--

Internal Jumper	2 pole 3 pole 4 pole 10 pole	
-----------------	---------------------------------------	--

Insulated Internal Jumper	2 pole 3 pole 4 pole 10 pole	
---------------------------	---------------------------------------	--

Current Bar	2 pole 3 pole 4 pole 10 pole	
-------------	---------------------------------------	--

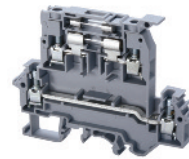
Shorting Sleeve & Screw	
-------------------------	--

External Jumper	2 pole 3 pole 4 pole 10 pole	
-----------------	---------------------------------------	--

Marking Tags (on terminal) (on lever)	
---------------------------------------	--

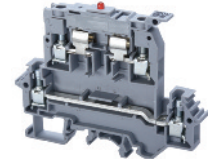
Fuse Blocks, 5 x 20 and 5 x 25 mm

DDFL4U



† Fuse not included.

DDFL4U(E)*



† Fuse not included.

Terminal Width	8 mm
Height x Length	66 x 88 mm
Stripping Length	9.5 mm
Insulation Material	Polyamide 6.6
Type of Connection	4 screw clamps & 1 tapped hole for cross connection
Type of Fuse Used	Ø5x20, Ø5x25 mm
Approvals	
Wire Range	22-10 AWG 0.2-4 mm ² 22-10 AWG
Voltage Rating	600 V 800 V 600 V
Current Rating	6.3 A 35 A 6.3 A 32 A 6.3 A 35 A
Torque	7 lb-in 0.5 N 7 lb-in
Other Approvals	

Cat. No.	Std. Pk.
DDFL4U	20
EPDDFL4U	20



CA702	50
CA802	50
CA202	50

CA729/2	100
CA729/3	50
CA729/4	50
CA729/10	10

CA749/2	100
CA749/3	50
CA749/4	50
CA749/10	10

CA703/6	100
CA704/6	100
CA705/6	100
CA737/10	100

CA707/S/Q/3	100
-------------	-----

CA711/2	100
CA711/3	100
CA711/4	50
CA711/10	25

MT8	100
MT2	100

Terminal Width	8 mm
Height x Length	66 x 88 mm
Stripping Length	9.5 mm
Insulation Material	Polyamide 6.6
Type of Connection	4 screw clamps & 1 tapped hole for cross connection
Type of Fuse Used	Ø5x20, Ø5x25 mm
Approvals	
Wire Range	22-10 AWG 0.2-4 mm ² 22-10 AWG
Voltage Rating	600 V 800 V 600 V
Current Rating	6.3 A 35 A 6.3 A 32 A 6.3 A 35 A
Torque	7 lb-in 0.5 Nm 7 lb-in
Other Approvals	

Cat. No.	Std. Pk.
DDFL4U(E)*	20
EPDDFL4U	20



CA702	50
CA802	50
CA202	50

CA729/2	100
CA729/3	50
CA729/4	50
CA729/10	10

CA749/2	100
CA749/3	50
CA749/4	50
CA749/10	10

CA703/6	100
CA704/6	100
CA705/6	100
CA737/10	100

CA707/S/Q/3	100
-------------	-----

CA711/2	100
CA711/3	100
CA711/4	50
CA711/10	25

MT8	100
MT2	100