

SAFETY ORGANIZATION(S).

THIS FILTER HAS BEEN FORMALLY RECOGNIZED, CERTIFIED OR APPROVED BY THE LISTED AGENCY. THEREFORE, ALL TEST/REQUIREMENTS SPECIFIED IN THE LATEST REVISION OF THE FOLLOWING AGENCY STANDARDS HAVE BEEN MET.

UL RECOGNIZED  
 CSA 22.2, NO.0,0.4,8  
 VDE 0565-3, 0625

OPERATING SPECIFICATIONS.

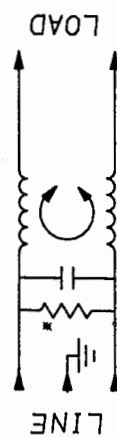
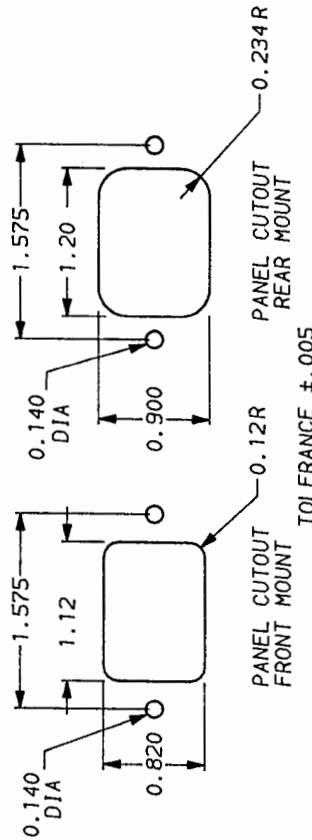
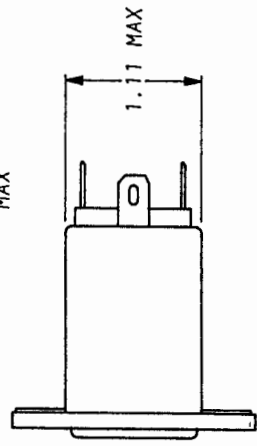
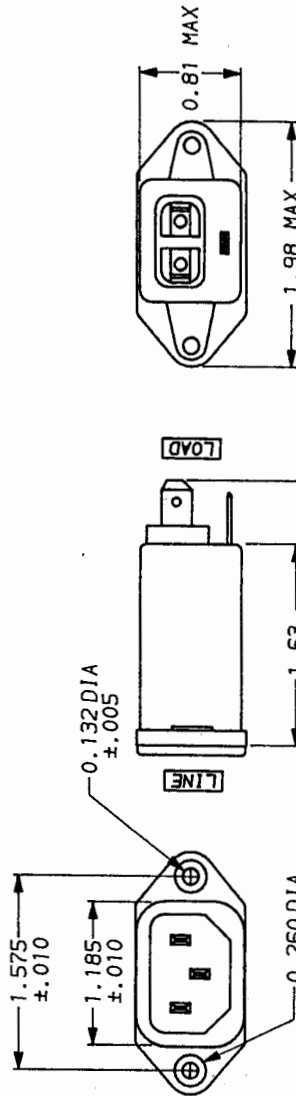
LINE VOLTAGE/CURRENT,  
 3 AMP., 120/250 VAC  
 3 AMP./40°C, 250 VAC  
 50-60HZ  
 30°C  
 LINE FREQUENCY,  
 MAX. CASE RISE & RATED CURRENT,  
 MAX. LEAKAGE CURRENT, EACH  
 LINE TO GROUND  
 2µA at 120V 60 Hz  
 5µA at 250V 50 Hz  
 OPERATING AMBIENT TEMP. RANGE,  
 -10°C TO +40°C @ RATED CURRENT, I<sub>r</sub>

IN AN AMBIENT, T<sub>a</sub>, HIGHER THAN 40°C, THE MAXIMUM OPERATING CURRENT, I<sub>o</sub>, IS AS FOLLOWS:

$$I_o = I_r \sqrt{\frac{85 - T_a}{45}}$$

RELIABILITY SPECIFICATIONS.

STORAGE TEMPERATURE,  
 HUMIDITY,  
 CURRENT OVERLOAD TEST,  
 1.45 mH NOMINAL  
 CAPACITANCE, (MEASURED @ 1 KHz, 0.25 VAC MAX., 25°C ±1°C)  
 ZERO  
 LINE TO GROUND,  
 LINE TO LINE,  
 DISCHARGE RESISTOR,  
 LINE/GROUND AND LINE/LINE  
 INSULATION RESISTANCE  
 (W/O DISCHARGE RESISTOR)  
 1.5 MΩ  
 6000 MΩ (MIN) AT 100 VDC  
 20°C AND 50% RH  
 RECOMMENDED RECEIVING INSPECTION HIPOT,  
 LINES TO GROUND,  
 LINE TO LINE,  
 1500 VAC FOR 1 MINUTE  
 1450 VDC FOR 1 MINUTE  
 FILTER APPROVAL,  
 THE BEST WAY TO SELECT AND QUALIFY A FILTER IS FOR YOUR ENGINEERING TO TEST THE UNIT IN YOUR EQUIPMENT.



FREQUENCY MHZ	50n - 50n (MINIMUM) INSERTION LOSS					
	.05	.10	.15	.50	1	5
COMMON	5	10	15	25	27	30
DIFF. dB	-	-	1	10	18	30

This document is proprietary to CORCOM INC. and is not to be reproduced nor used for manufacturing purposes except on CORCOM's order or prior written consent.

TOLERANCE EXCEPT AS NOTED  
 DECIMAL, .XXX .XX .X ANGLES  
 ENGLISH, ±.025 ±.1°  
 METRIC, ±  
 MATERIAL:  
 AS SUPPLIED

FINISH:  
 AS SUPPLIED

**corcom**  
 LIBERTYVILLE, IL 60048  
**POWER LINE FILTER**

SCALE	DATE	DRG. NO.	REV.
NTS	9-19-91		3EBH1.01
DRN. BY	CFW	ORIGINATOR	CFW

\*RESISTOR ADDED TO PRODUCT BUILT AFTER 3-30-92 (9212).