

SAFETY ORGANIZATION(S).

THIS FILTER HAS BEEN FORMALLY RECOGNIZED, CERTIFIED OR APPROVED BY THE LISTED AGENCY. THEREFORE, ALL TEST/REQUIREMENTS SPECIFIED IN THE LATEST REVISION OF THE FOLLOWING AGENCY STANDARDS HAVE BEEN MET.

UL RECOGNIZED  
 CSA 22.2, NO.0,0.4,8  
 VDE 0565-3, 0625

OPERATING SPECIFICATIONS.

LINE VOLTAGE/CURRENT,  
 3 AMP., 120/250 VAC  
 3 AMP./40°C, 250 VAC  
 50-60HZ  
 30°C  
 LINE FREQUENCY,  
 MAX. CASE RISE & RATED CURRENT,  
 MAX. LEAKAGE CURRENT, EACH  
 LINE TO GROUND  
 2µA at 120V 60 Hz  
 5µA at 250V 50 Hz  
 OPERATING AMBIENT TEMP. RANGE,  
 -10°C TO +40°C @ RATED CURRENT, I<sub>r</sub>

IN AN AMBIENT, T<sub>a</sub>, HIGHER THAN 40°C, THE MAXIMUM OPERATING CURRENT, I<sub>o</sub>, IS AS FOLLOWS:

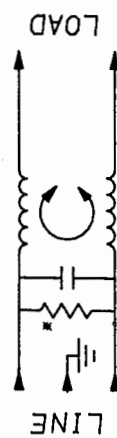
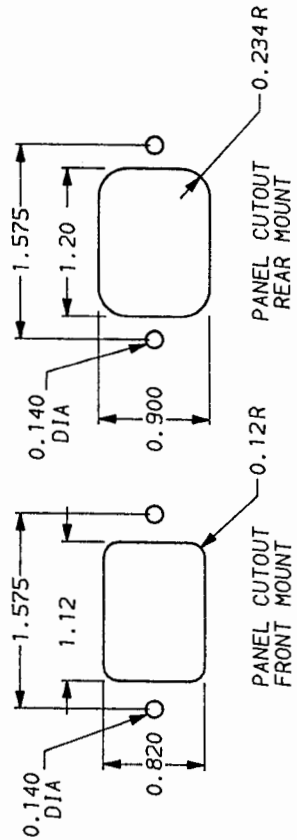
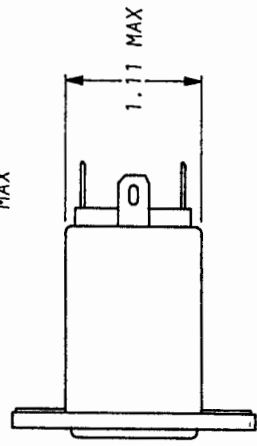
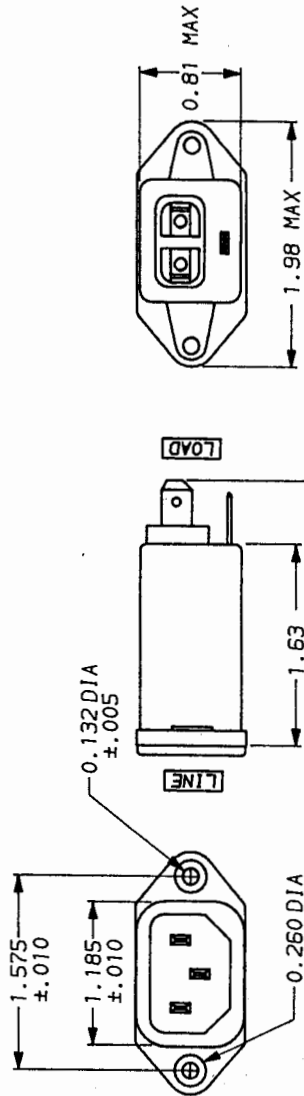
$$I_o = I_r \sqrt{\frac{85 - T_a}{45}}$$

RELIABILITY SPECIFICATIONS.

STORAGE TEMPERATURE,  
 HUMIDITY,  
 CURRENT OVERLOAD TEST,  
 1.45 mH NOMINAL  
 CAPACITANCE, (MEASURED @ 1 KHz, 0.25 VAC MAX., 25°C ±1°C)  
 ZERO  
 LINE TO GROUND,  
 LINE TO LINE,  
 DISCHARGE RESISTOR,  
 1.5 MΩ  
 6000 MΩ (MIN) AT 100 VDC  
 20°C AND 50% RH  
 INSULATION RESISTANCE  
 (W/O DISCHARGE RESISTOR)

RECOMMENDED RECEIVING INSPECTION HIPOTEL.

1500 VAC FOR 1 MINUTE  
 1450 VDC FOR 1 MINUTE  
 LINE TO GROUND,  
 LINE TO LINE,  
 FILTER APPROVAL,  
 THE BEST WAY TO SELECT AND QUALIFY A FILTER IS FOR YOUR ENGINEERING TO TEST THE UNIT IN YOUR EQUIPMENT.



FREQUENCY MHZ	50n - 50n (MINIMUM) INSERTION LOSS							
COMMON	.05	.10	.15	.50	1	5	10	30
DIFF. dB	5	10	15	25	27	30	27	22
	-	-	1	10	18	30	31	31

This document is proprietary to CORCOM INC. and is not to be reproduced nor used for manufacturing purposes except on CORCOM's order or prior written consent.

\*RESISTOR ADDED TO PRODUCT BUILT AFTER 3-30-92 (9212).

TOLERANCE EXCEPT AS NOTED  
 DECIMAL, .XXX .XX .X ANGLES  
 ENGLISH, .025 ± 1°  
 METRIC, ±  
 MATERIAL:  
 AS SUPPLIED

FINISH:  
 AS SUPPLIED



POWER LINE FILTER

SCALE	DATE	DRG. NO.	REV.
NTS	9-19-91		3EBH1.01
DRN. BY	CFW	ORIGINATOR	CFW