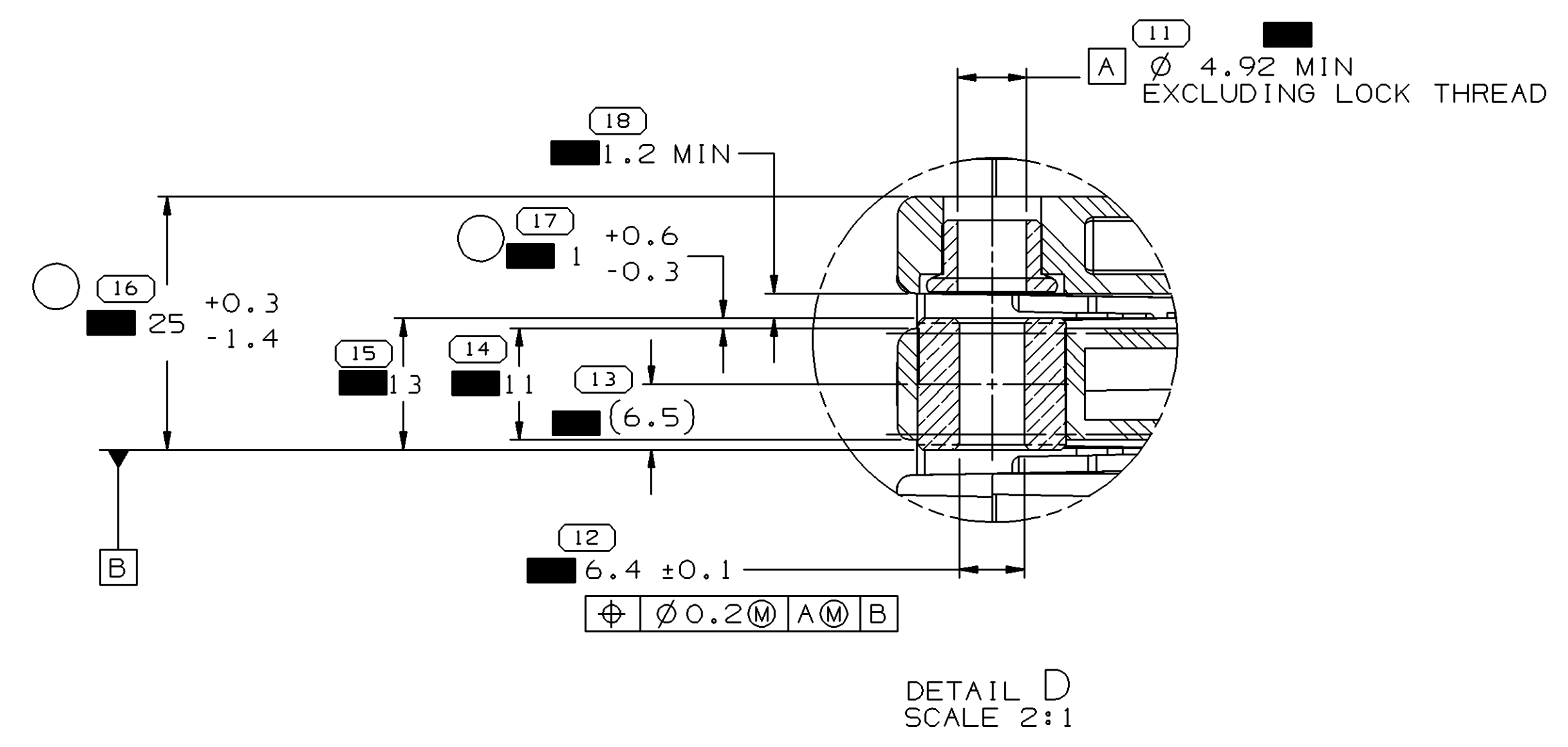


MOUNTING HOLE DETAIL

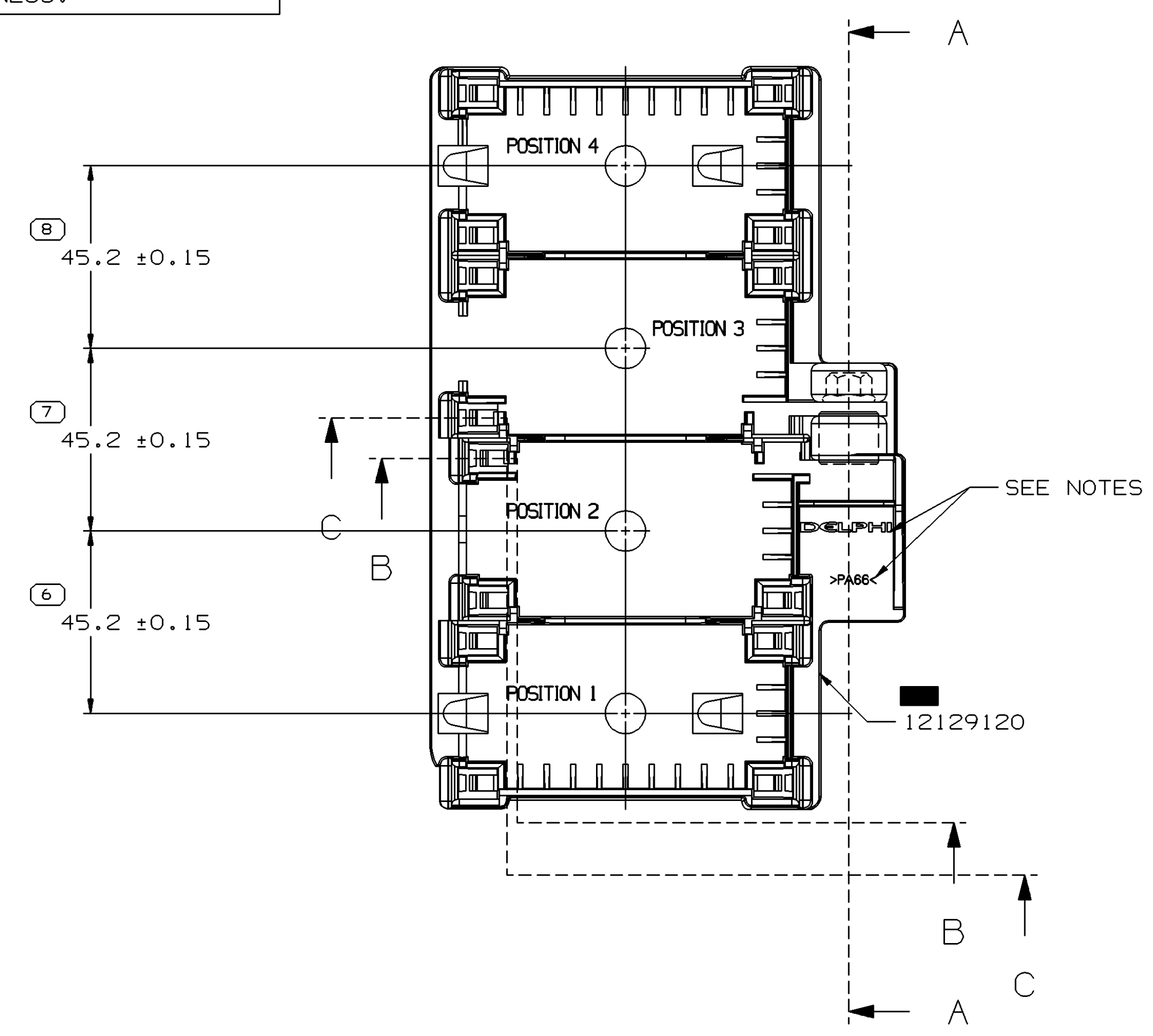
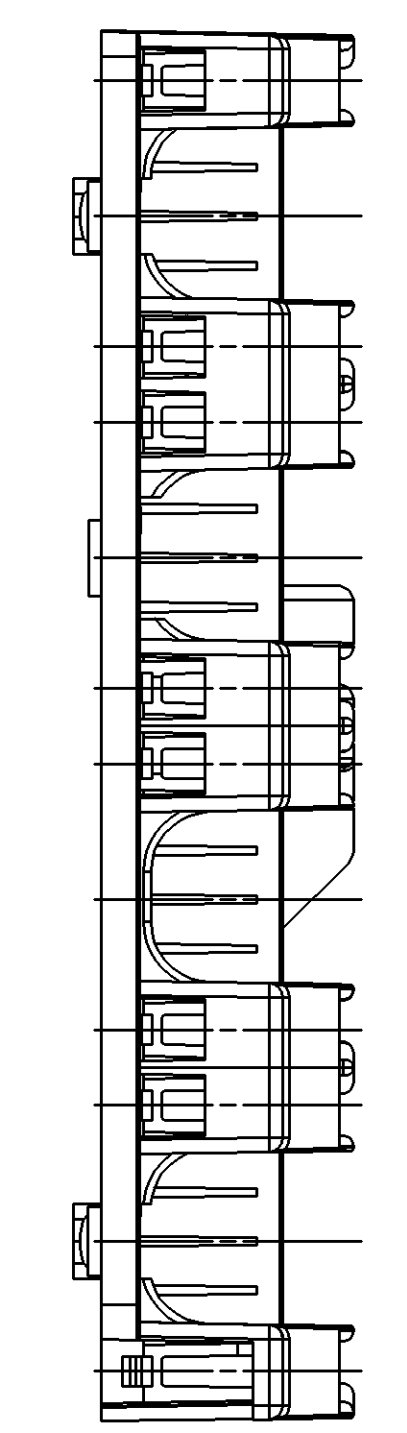
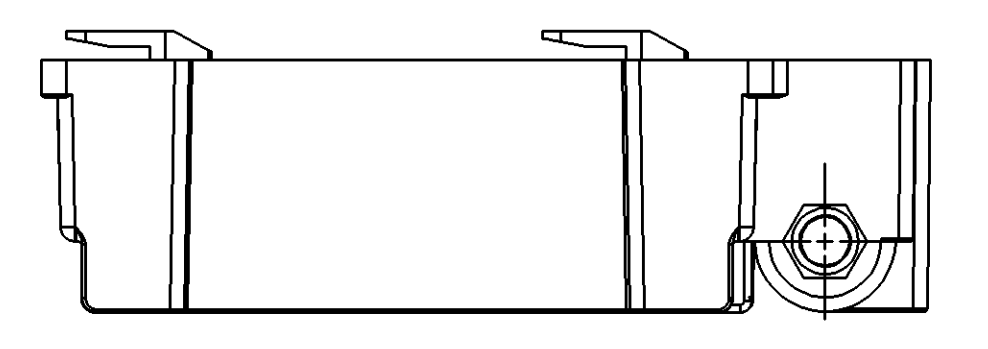
- NOTES
- UNLESS OTHERWISE SPECIFIED AND/OR INDICATED: DIMENSIONS ARE TO FACE OF VIEW SHOWN AND AUTOMATICALLY ROUNDED BY COMPUTER FOR INSPECTION (SEE MATH MODEL FOR PRECISE DIMENSIONS). FOR ALL OTHER DIMENSIONS NOT SHOWN BUT REQUIRED FOR TOOL BUILD, SEE MATH MODEL FOR PRECISE TOOL PATH DATA.
 - 1.43 MAX ALLOWABLE SHEET METAL THICKNESS.

SYMBOL DEFINITION		TOTAL NO OF INSPECTIONS REQUIRED	MISSING SYMBOLS
A	DIMENSION WITHOUT AN INSPECTION REPORT SYMBOL DOES NOT REQUIRE INSPECTION. IT MAY BE CONTROLLED ON THE INDIVIDUAL COMPONENT DRAWING.	25	NO MISSING SYMBOL NUMBER
		LAST NO. USED	23

DATE	STG	REV	W/P	CHK	ZONE	REVISION HISTORY	AUTH	DR	APVD
18FE03	R	C2	-	-	-	ADDED NOTES (2 PLCS)	236963	RCH	JH
07MR03	R	C3	-	-	-	ADDED SYMBOLS (13 PLCS) & NOTES (3 PLCS)	238006	RCH	JH
050C04	R	03	AD	-	-	REVISED TOLERANCES - 2PLCS; REVISED NOTE 9	259886	ADK	ADK

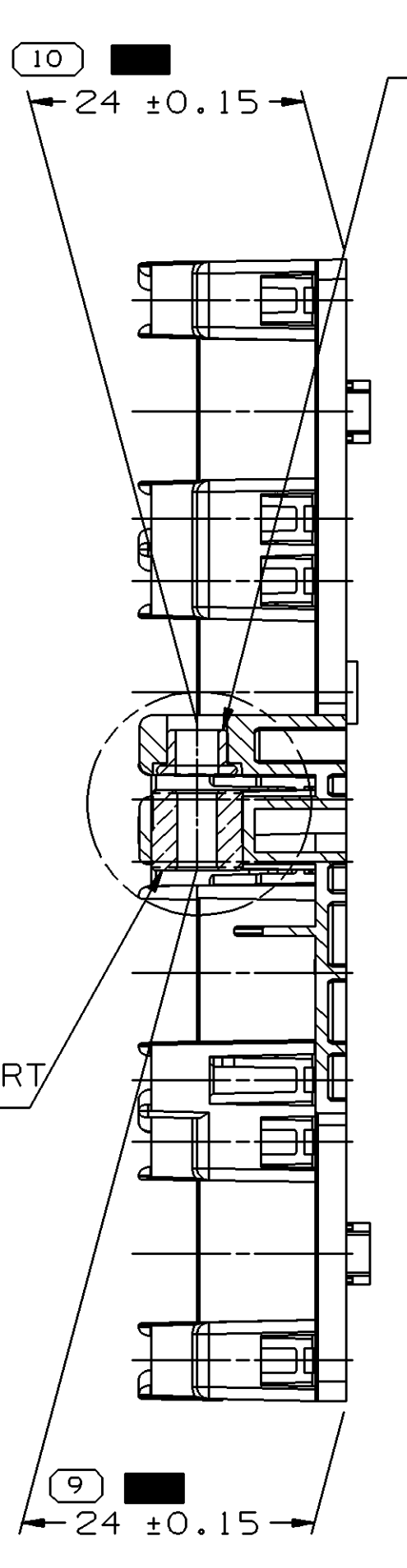


DETAIL D
SCALE 2:1

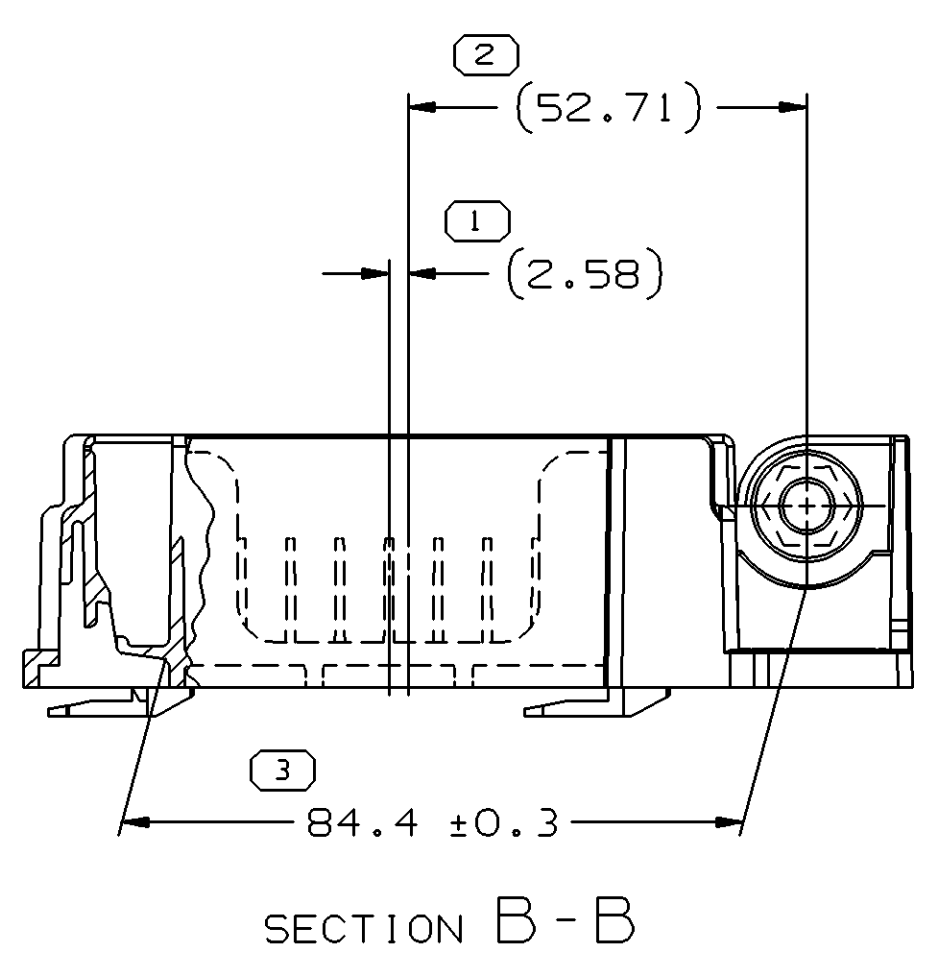
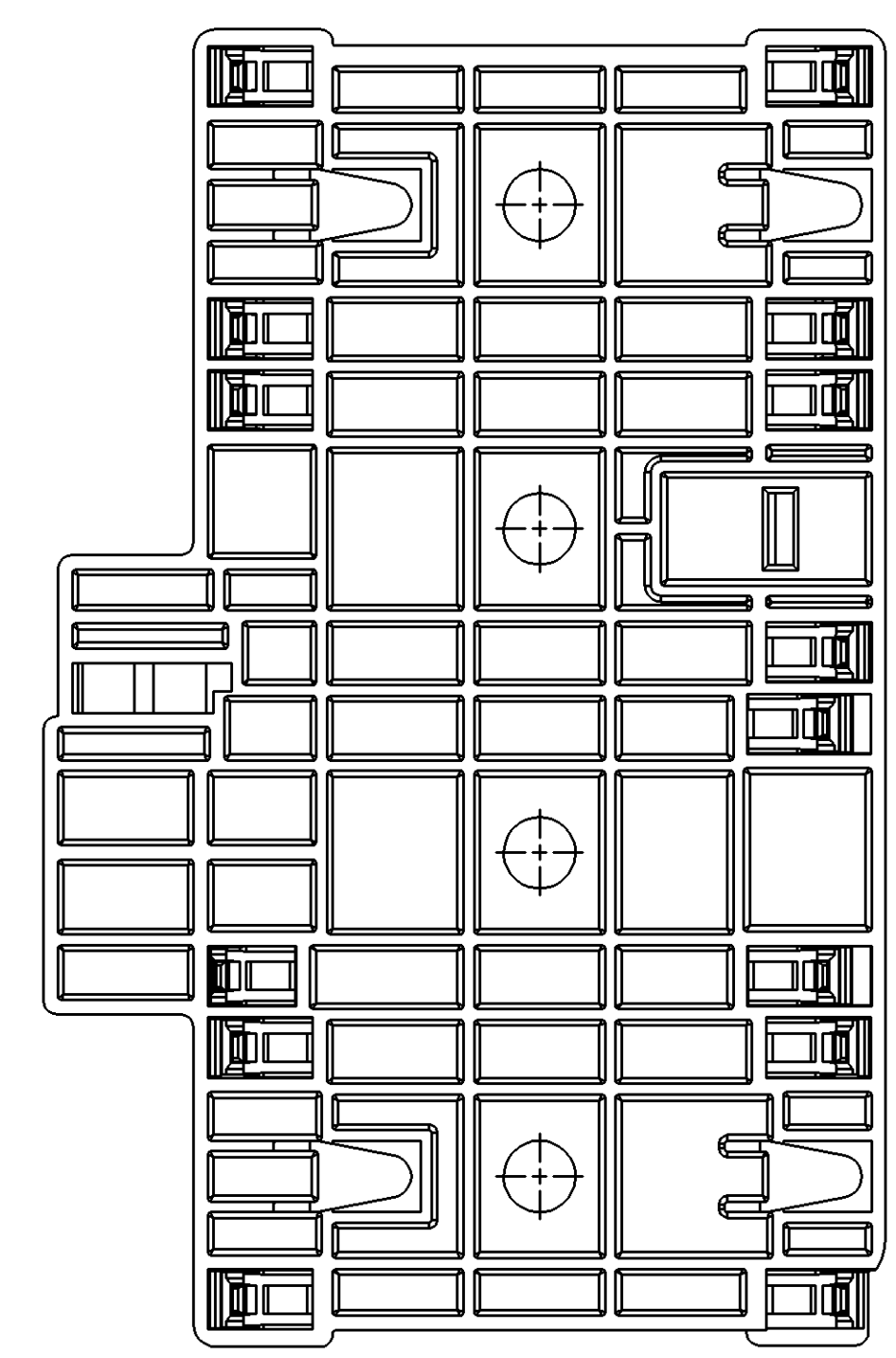


GM 21006316 - FLANGED NUT (M6 X 1)
PRESS FIT - SEE NOTES

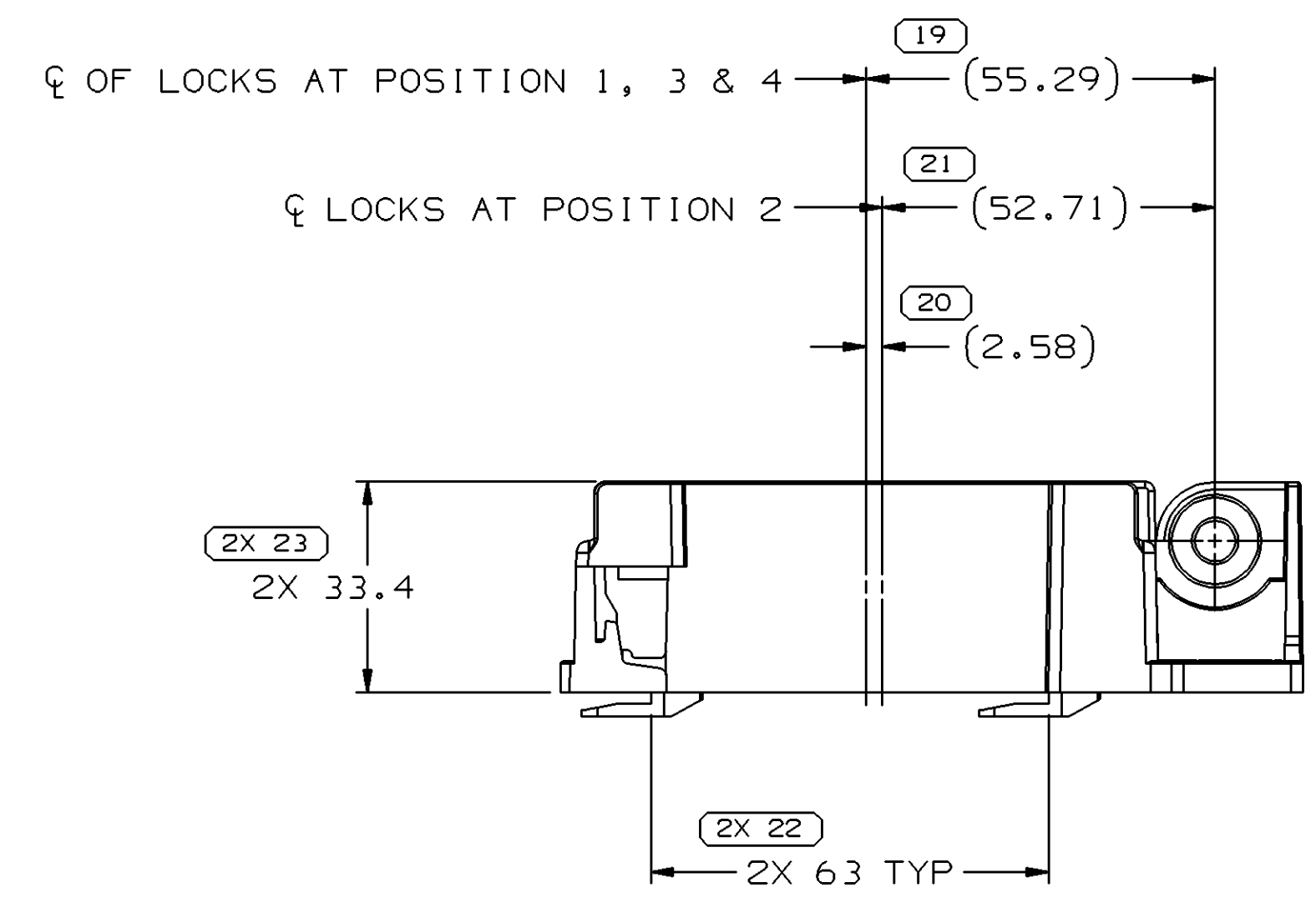
12110248 - SLEEVE INSERT
PRESS FIT - SEE NOTES



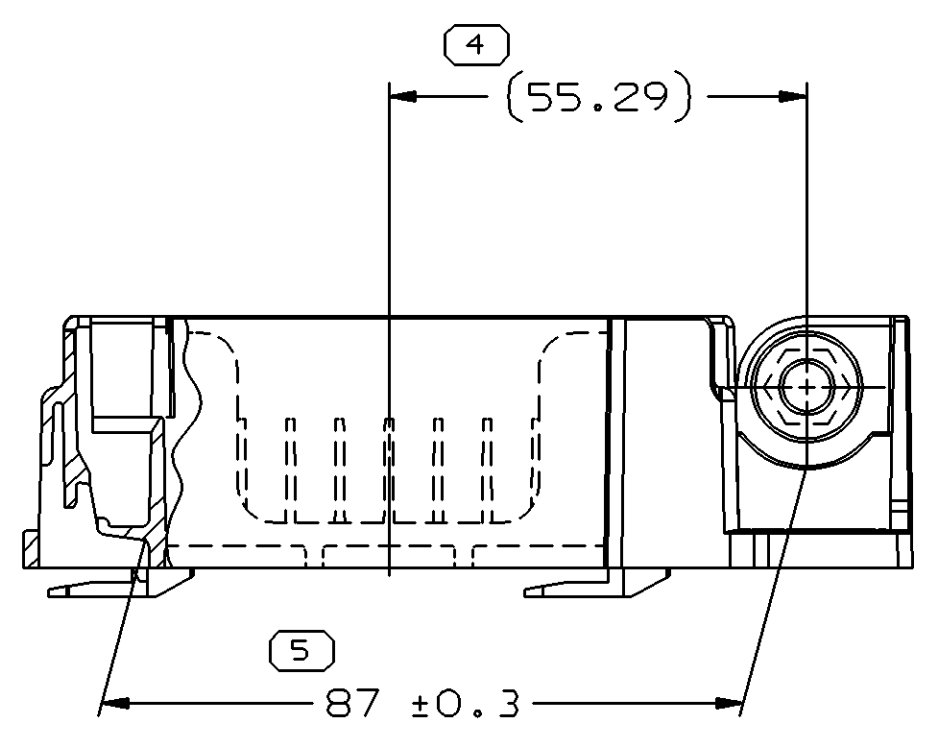
SECTION A-A



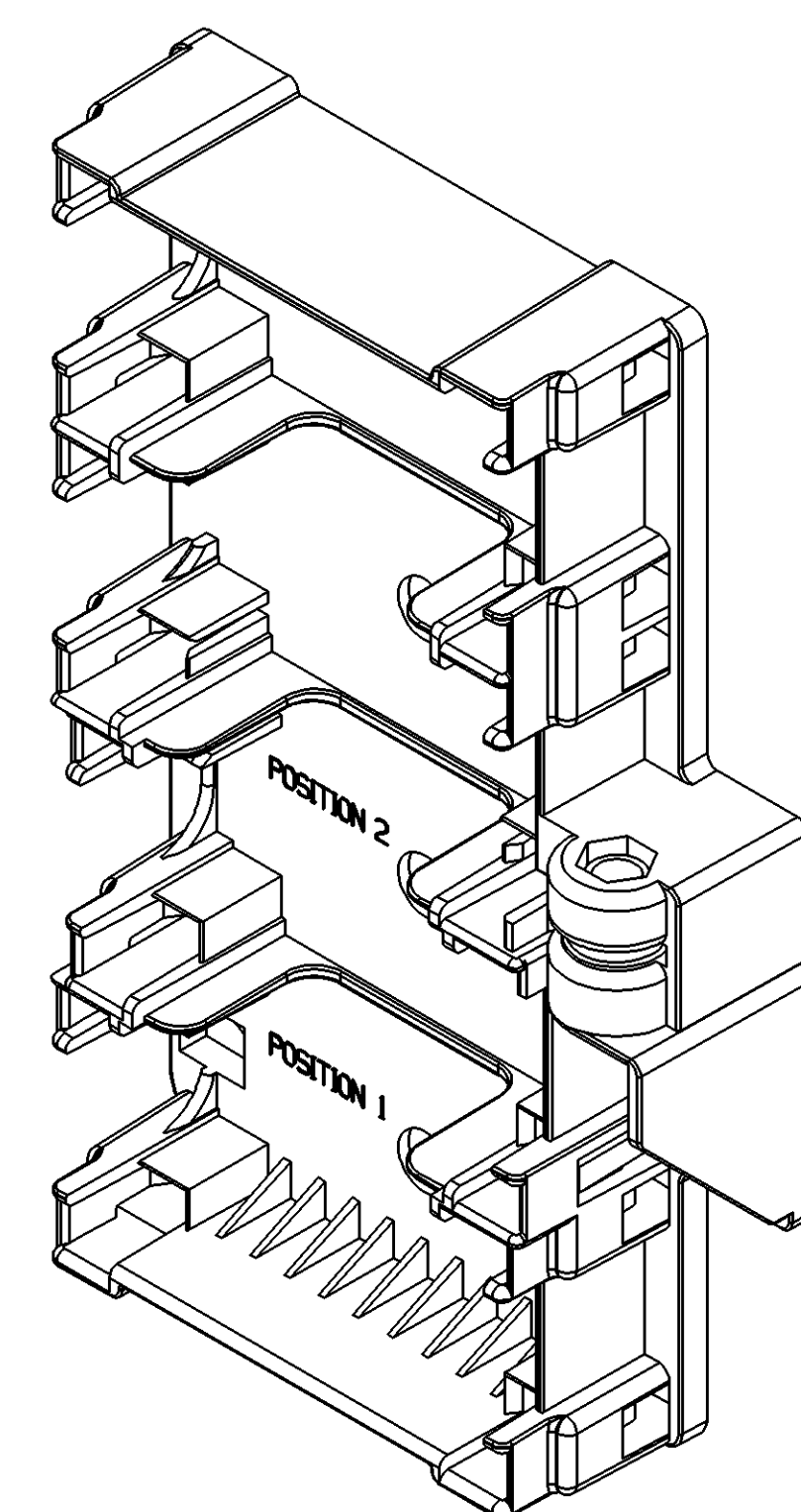
SECTION B-B



SECTION C-C



- NOTES
- UNLESS OTHERWISE SPECIFIED AND/OR INDICATED: DIMENSIONS ARE TO FACE OF VIEW SHOWN AND AUTOMATICALLY ROUNDED BY COMPUTER FOR INSPECTION (SEE MATH MODEL FOR PRECISE DIMENSIONS). FOR ALL OTHER DIMENSIONS NOT SHOWN BUT REQUIRED FOR TOOL BUILD, SEE MATH MODEL FOR PRECISE TOOL PATH DATA.
 - MATERIAL RECYCLING CODE PER ISO 11469. (2.3X(0.1) RAISED CHARACTERS AS SHOWN TO BE LOCATED ON ANY EXTERIOR SURFACE. OPTIONAL CONSTRUCTION TO BE "PED" OR NO LOGO.
 - SEALING CODE 0 - UNSEALED
 - THIS PART IS NOT CONTROLLED FOR AUTOMATIC FEEDING.
 - THIS PART ACCEPTS THE FOLLOWING COMPONENTS OR EQUIVALENT:
MODULAR CONVENIENCE CENTER 12129099
MAX1-FUSE FUSEBLOCK ASSEMBLIES
M6 BOLT 11515327
 - NUT MUST WITHSTAND 20NM TORQUE WHEN PULLED OUT TO 1 CLEARANCE FROM SLEEVE INSERT.
 - SLEEVE MUST WITHSTAND 120N PUSH OUT FORCE MINIMUM.
 - NUT MUST WITHSTAND 60N PUSH OUT FORCE MINIMUM.
 - ASSEMBLE BOLT TO INSERT USING 8 ±3NM OF TORQUE
 - (2.3X(0.1) RAISED DELPHI CORPORATE BRAND TO BE LOCATED ON ANY EXTERIOR SURFACE, PREFERABLY VISIBLE AT FINAL ASSEMBLY. OPTIONAL CONSTRUCTION TO BE "PED" OR NO LOGO.
 - WHEN ONLY ONE MAX1-FUSE MODULE IS USED, IT MUST BE LOCATED IN POSITION 3.
 - PLUG DEVICES INTO CONVENIENCE CENTERS BEFORE LOCKING CONVENIENCE CENTERS INTO THE BASE
 - DIMENSIONS NOT INDICATED BY "■" DO NOT REQUIRE INSPECTION AND ARE FOR REFERENCE ON THIS DRAWING. THESE DIMENSIONS MAY BE CONTROLLED ON THE INDIVIDUAL COMPONENT DRAWING



DIMENSIONAL RANGE (MM)	CHART LET	THIRD ANGLE PROJECTION	DO NOT SCALE
FROM 0 TO 20	> 0		
TO 20 TO 30	> 20		
30 TO 50	> 30		
50 TO 70	> 50		
70 TO 100	> 70		
100 TO 150	> 100		
150 TO 200	> 150		
200 TO 250	> 200		
250 TO 300	> 250		
300 TO 400	> 300		
400 TO 500	> 400		

DELPHI
DELPHI PACKARD ELECTRIC SYSTEMS
WARREN, OH

DR	DATE
APVD1 TOM NADASKY	30J92
APVD2 J.P. LITTLEFIELD	27MR92
APVD3 J.P. LITTLEFIELD	27MR92
APVD4	
APVD5	

UNLESS OTHERWISE SPECIFIED
THIS DOCUMENT IS IN ACCORDANCE WITH ASME Y14.5M-1994
AS AMENDED BY THE 2003 DIMENSIONING AND TOLERANCING ADDENDUM - 1997. ALL GEOMETRIC TOLERANCES AND RELATED SURFACE PROPERTIES SHALL BE PERFORMED IN ACCORDANCE WITH THE 2003 DIMENSIONING AND TOLERANCING ADDENDUM - 1997. UNLESS OTHERWISE SPECIFIED, DIMENSIONS SHALL BE IN MILLIMETERS. ALL DIMENSIONS ARE IN MILLIMETERS.

REFERENCE

UNLESS OTHERWISE SPECIFIED
DIMENSIONS ENCLOSED IN () INDICATE REFERENCE DIMENSIONS AND NO TOLERANCE LIMITS ARE ESTABLISHED

(17) PROCESS SENSITIVE DIMENSION

DRAWING NAME
ASM MISC MODULE BLK W184.00 H117.70

DRAWING NUMBER
12129121

SIZE A0 SCALE 1:1 FRAME NO 1 OF 1 SHEET NO 1 OF 1 REV N/P R 03 AD