

THIS DRAWING IS UNPUBLISHED. RELEASED FOR PUBLICATION
 © COPYRIGHT BY TYCO ELECTRONICS CORPORATION. ALL RIGHTS RESERVED.

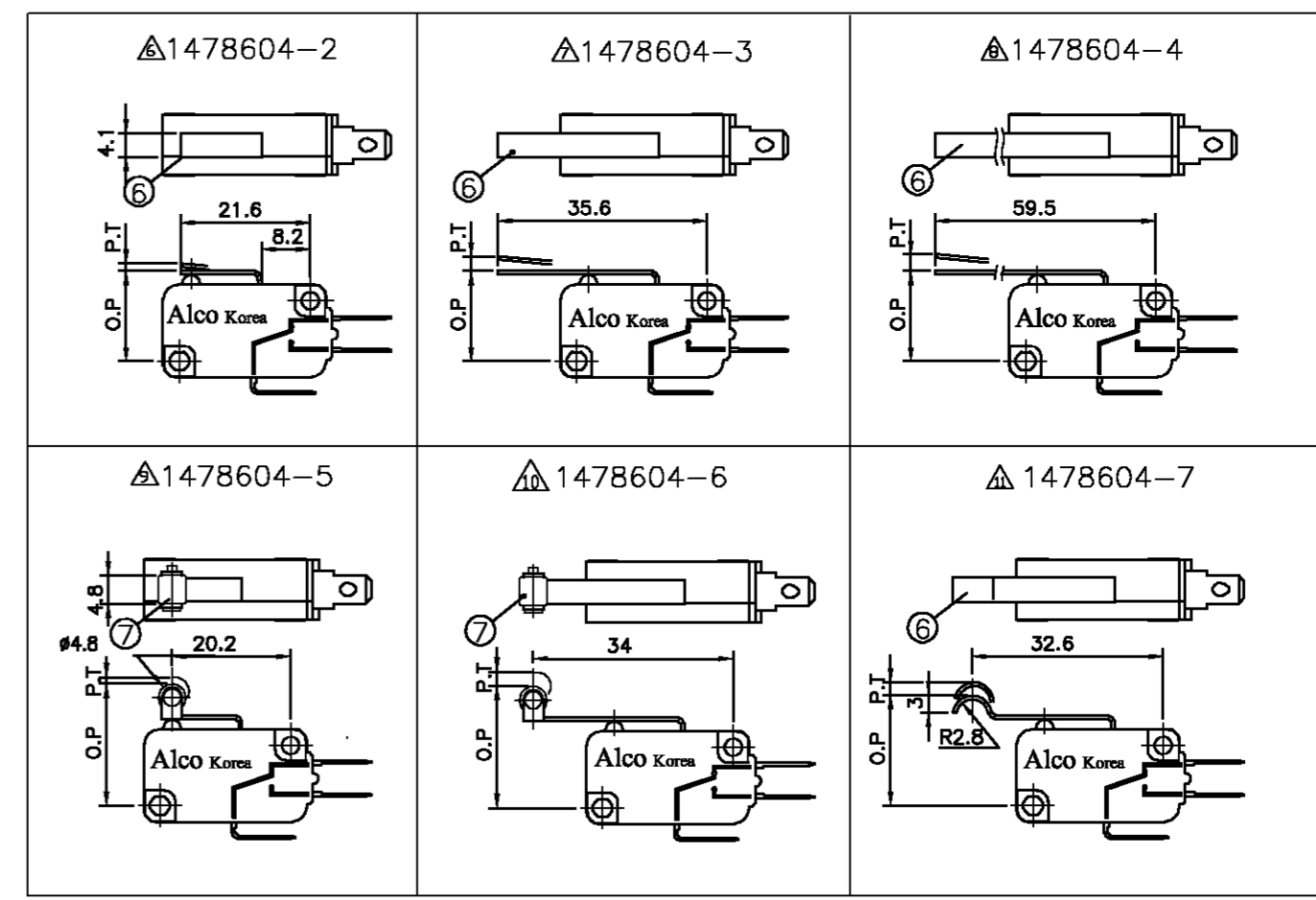
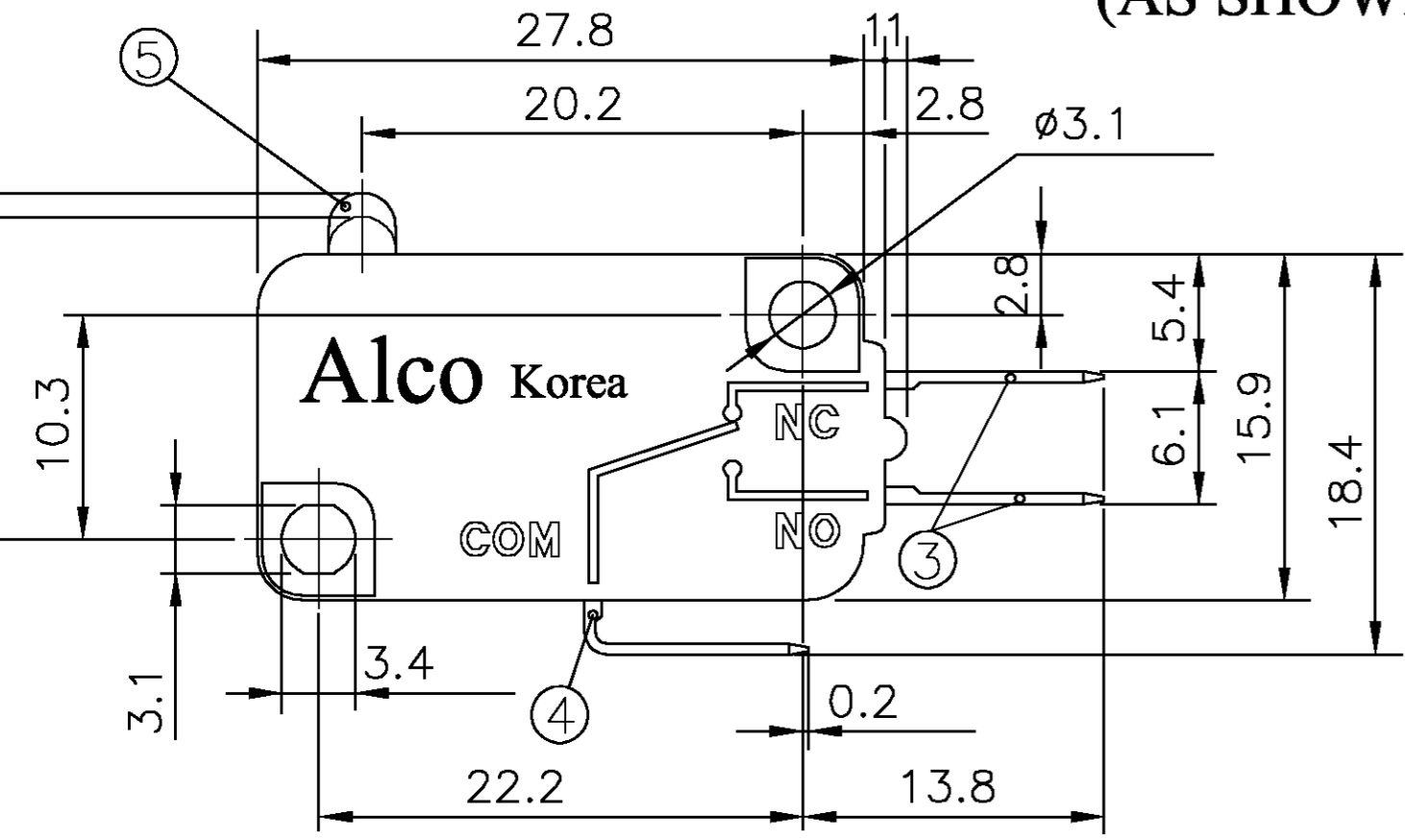
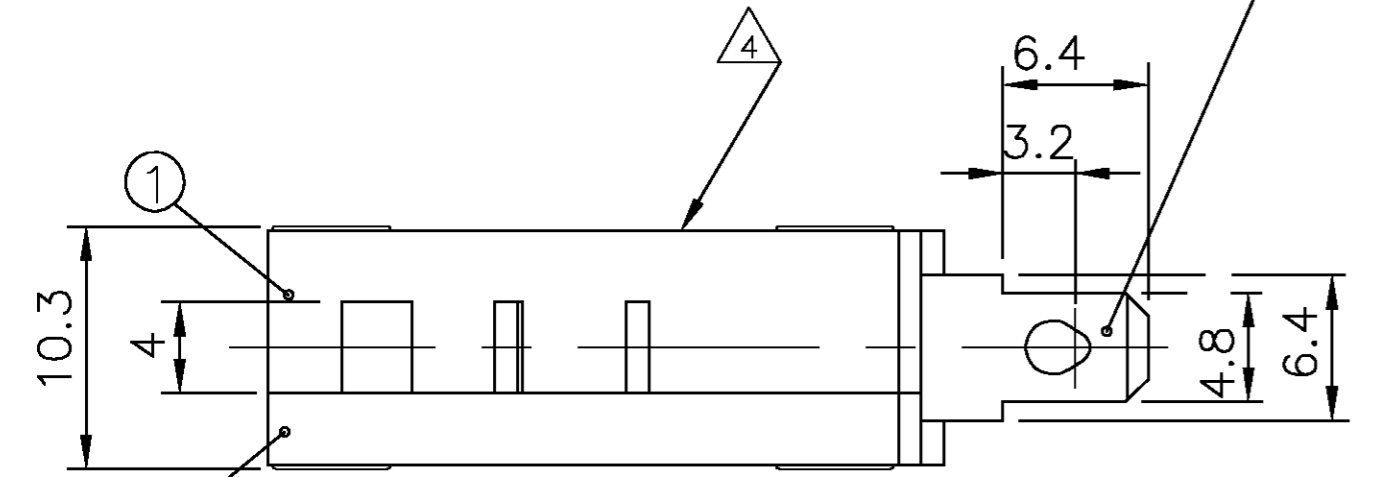
| LOC | | DIST | | REVISIONS | | | |
|-----|---|------|-----|--------------|----------|-----|------|
| E | B | P | LTR | DESCRIPTION | DATE | DWN | APVD |
| | | E | | EBDO-0129-03 | 04-08-03 | SS | JA |

.187" TAB & SOLDERING TERMINAL, 0.5mm THICK.

SPECIFICATION DATA

| Amp Rating | Minature Range | |
|---|--|----------------------------------|
| | 16 | 5 |
| Insulation Resistance | Min. 100M ohm | |
| Contact Resistance | Max 15 M ohm | Max 50 M ohm |
| Dielectric Strength | AC 2,000V | |
| | Between Non-consecutive terminals | |
| Operating Speed | 0.2mm/sec - 1,000mm/sec | 1mm/sec - 500mm/sec |
| Max allowed Mechanical Open/Close Frequencies | 600 Cycles/min | |
| Shock Resistance (Without Lever) | 300mm/sec sq (approx 30G) | |
| Vibration Resistance (Without Lever) | 1.5mm 10-55 Hz (2Hr) | 1.5mm 10 - 20Hz (2Hr) |
| Electrical Life | 100,000 Operations at Rated Load (Max 20 Operations/min) | 1,000,000 Operations |
| Mechanical Life | 10,000,000 Operations (Max 200 operations/min) | |
| Safety Approval | UL / CSA / VDE | |
| Operating Temperature Range | -20 deg C to 130 deg C RH85% Max | -30 deg C to 130 deg C RH90% Max |
| UL File No. | E60363 | |
| CSA File No | 218582 | |
| VDE File No. | 40006699 | 40006698 |

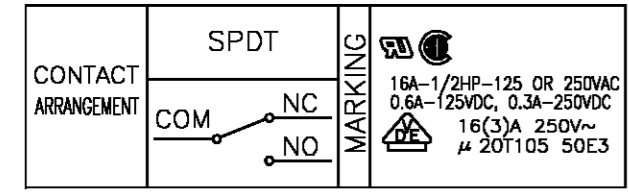
1478604-1
(AS SHOWN)



| DRAWING NO | △ | CHARACTERISTICS | | | | | |
|-------------|---|-----------------|-----------------|-------------|--------------------|-------------|-----------------------|
| | | Operating Force | Releasing Force | Pre Travel | Operating Position | Over Travel | Movement Differential |
| 1 1478604-1 | — | Max 200 g | Min 50 g | Max 1.6 mym | 14.8 ±0.4 mym | Min 0.8 mym | Max 0.4 mym |
| 2 1478604-2 | △ | 200 g | 50 g | 1.6 mym | 15.4 ±0.4 mym | 0.8 mym | 0.4 mym |
| 3 1478604-3 | △ | 120 g | 20 g | 4.0 mym | 15.4 ±1.4 mym | 1.3 mym | 1.2 mym |
| 4 1478604-4 | △ | 60 g | 10 g | 7.5 mym | 15.4 ±3.0 mym | 2.6 mym | 2.4 mym |
| 5 1478604-5 | △ | 240 g | 50 g | 1.6 mym | 20.7 ±0.8 mym | 0.8 mym | 0.4 mym |
| 6 1478604-6 | △ | 120 g | 20 g | 4.0 mym | 20.7 ±1.6 mym | 1.3 mym | 1.2 mym |
| 7 1478604-7 | △ | 120 g | 20 g | 4.0 mym | 18.6 ±1.5 mym | 1.3 mym | 1.2 mym |

NOTES:

- FOR TECHNICAL DATA REFER TO YOUR LOCAL TYCO ELECTRONICS SALES OFFICE.
- ALL DIMENSIONS ARE NOMINAL. FOR REFERENCE ONLY UNLESS OTHERWISE STATED.
- ALL DIMENSIONS ARE COMMON TO THE MAIN BODY. VARIATIONS ARE IN THE OPERATING LEVERS.
- TYCO PART NUMBER AND LOT No. INKJET MARKED IN THIS AREA.
- GENERAL INFO.



| | | |
|----|-----------------|------|
| 7 | ROLLER | (1) |
| 6 | LEVER | (1) |
| 5 | BUTTON | 1 |
| 4 | COMMON TERMINAL | 1 |
| 3 | TERMINAL | 2 |
| 2 | COVER | 1 |
| 1 | BOX | 1 |
| NO | PART NAME | Q'TY |

| TYCO SALES PART No. | TYCO PART NO. | DESCRIPTION | COLOUR | QTY | PACK DESC |
|---------------------|---------------|---------------------------|--------|------|-----------|
| MP16DT-ASMD | △ 1478604-7 | Microswitch, Simu Lever | Blue | 1000 | CARTON |
| MP16DT-ANRD | △ 1478604-6 | Microswitch, Norm Roller | Blue | 800 | CARTON |
| MP16DT-ASRH | △ 1478604-5 | Microswitch, Short Roller | Blue | 1000 | CARTON |
| MP16DT-ALLB | △ 1478604-4 | Microswitch, Long Lever | Blue | 600 | CARTON |
| MP16DT-ANLD | △ 1478604-3 | Microswitch, Norm Lever | Blue | 800 | CARTON |
| MP16DT-ASLG | △ 1478604-2 | Microswitch, Short Lever | Blue | 1000 | CARTON |
| MP16DT-AOLG | 1478604-1 | Microswitch, Pin Plunger | Blue | 1000 | CARTON |

THIS DRAWING IS A CONTROLLED DOCUMENT.

| | |
|--------------------------|---|
| DWN P.Bates 03-10-01 | Tyco Electronics Corporation Bideford, Devon, EX39 4HE |
| CHK C.Kaminski 03-10-01 | |
| APVD C.Kaminski 03-10-01 | |
| PRODUCT SPEC | |
| APPLICATION SPEC | NAME |
| WEIGHT | MICRO SWITCH 16A SOLDER TERMINAL 200g RANGE |
| SCALE 1:1 | SHEET 1 OF 2 |
| REV E | RESTRICTED TO |


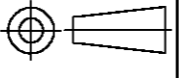
THIS DRAWING IS UNPUBLISHED. RELEASED FOR PUBLICATION
 © COPYRIGHT BY TYCO ELECTRONICS CORPORATION. ALL RIGHTS RESERVED.

| LOC | | DIST | | REVISIONS | | | |
|-----|-----|-------------|--------------|-----------|------|----|--|
| P | LTR | DESCRIPTION | DATE | DWN | APVD | | |
| E | B | E | EBDO-0129-03 | 04-06-03 | SS | JA | |

MAJOR COMPONENT & MATERIAL LIST

| NO | PART NAME | MATERIAL | Q'ty | UL FRAME | FINISH (COLOR) |
|----|-------------------|---|------|----------|----------------|
| 1 | CASE | P.B.T RESIN | 1 | 94 V-0 | |
| 2 | COVER | | 1 | | |
| 3 | MOVABLE CONTACTOR | Brass Sheet t=0.4 | 1 | | SILVER PLATING |
| 4 | GUIDE PLATE | Brass Sheet t=0.8 | 1 | | SILVER PLATING |
| 5 | COMMON TERMINAL | Brass Sheet t=0.8 | 1 | | SILVER PLATING |
| 6 | PLATE SPRING | Beryllium Copper Sheet (t=0.1~ 0.25) | 1 | | |
| 7 | TERMINAL AID | Brass Sheet (t=0.8) | 0 | | |
| 8 | CONTACT | Ag alloy(AgCdO,AgSnO2) | 3 | | |
| 9 | TERMINAL | Brass Sheet (t=0.8) | 2 | | SILVER PLATING |
| 10 | ACTUATOR | PHENOLIC RESIN | 1 | 94 V-0 | |
| 11 | LEVER | Stainless SteelSheet (t=0.6) | (1) | | |

() = Where Applicable

| | | | | |
|---|--|------------------------------------|---|-------------------------|
| THIS DRAWING IS A CONTROLLED DOCUMENT. | | DWN S.Shackson 04-06-03 |  Tyco Electronics Corporation Bideford, Devon, EX39 4HE | |
| DIMENSIONS: MM | | CHK F.Wheeler-King 04-06-03 | | |
|  | | APVD F.Wheeler-King 04-06-03 | NAME MICRO SWITCH 16A SOLDER TERMINAL 200g RANGE | |
| TOLERANCES UNLESS OTHERWISE SPECIFIED: | | PRODUCT SPEC - | SIZE A2 | |
| 0 PLC ± - | | APPLICATION SPEC - | CAGE CODE 00779 | DRAWING NO C=1478604 |
| 1 PLC ± 0.4 | | WEIGHT - | RESTRICTED TO - | |
| 2 PLC ± 0.4 | | CUSTOMER DRAWING | | |
| 3 PLC ± - | | SCALE 1:1 | | |
| 4 PLC ± - | | SHEET 2 OF 2 | | |
| ANGLES ± - | | REV E | | |
| FINISH - | | | | |