

73725

PRODUCT NUMBER CODE

73725-X X X X X LF

HOUSING COLOR OPTION

0-WHITE  
1-BLACK

### SENSOR CONTACT OPTION

0-WITH SENSOR CONTACT  
1-WITHOUT SENSOR CONTACT

SHIELD PLATING OPTION

- 1- 1.25 $\mu$ m MINIMUM NICKEL UNDERPLATE &  
2.5 $\mu$ m MINIMUM BRIGHT TIN OVER ALL AREA.  
(HOLD DOWN STYLE "A")
- 2- 1.25 $\mu$ m MINIMUM NICKEL UNDERPLATED OVER ALL;  
2.5  $\mu$ m MINIMUM MATTE TIN PLATED ON  
HOLD DOWN AREA ONLY.(HOLD DOWN STYLE "B")
- 3- 1.25 $\mu$ m MINIMUM NICKEL UNDERPLATED OVER ALL;  
2.5  $\mu$ m MINIMUM MATTE TIN PLATED ON  
HOLD DOWN AREA ONLY.(HOLD DOWN STYLE "A")
- 4- 1.25 $\mu$ m MINIMUM NICKEL UNDERPLATED &  
2.5 $\mu$ m MINIMUM BRIGHT TIN OVER ALL AREA.  
(HOLD DOWN STYLE "B")
- 5- 1.25 $\mu$ m MINIMUM NICKEL UNDERPLATED OVER ALL;  
2.5 $\mu$ m MINIMUM MATTE TIN PLATED ON  
HOLD DOWN AREA ONLY (HOLD DOWN STYLE "C")
- 6- 1.25 $\mu$ m MINIMUM NICKEL ONLY.  
(HOLD DOWN STYLE "A")
- 7- 1.25 $\mu$ m MINIMUM NICKEL UNDERPLATED &  
2.5  $\mu$ m MINIMUM MATTE TIN PLATED OVER ALL.  
(HOLD DOWN STYLE "A")
- 8- 1.25 $\mu$ m MINIMUM NICKEL UNDERPLATED &  
2.5  $\mu$ m MINIMUM MATTE TIN PLATED ALL AREA.  
(HOLD DOWN STYLE "B")
- 9- 1.25 $\mu$ m MINIMUM NICKEL UNDERPLATED OVER ALL;  
2.5  $\mu$ m MINIMUM MATTE TIN PLATED ON  
HOLD DOWN AREA ONLY (HOLD DOWN STYLE "D")
- 5- 1.25 $\mu$ m MINIMUM NICKEL ONLY;(HOLD DOWN STYLE "A").  
HIGH PERFORMANCE MATERIAL  
FOR 12,000 DURABILITY CYCLES
- A- 1.25 $\mu$ m MINIMUM NICKEL PLATED OVER ALL  
2.5  $\mu$ m MINIMUM MATTE TIN PLATED ON HOLD DOWN AREA ONLY  
(HOLD DOWN STYLE "F")
- B- 1.25 $\mu$ m MINIMUM NICKEL PLATED OVER ALL  
2.5  $\mu$ m MINIMUM MATTE TIN PLATED ON HOLD DOWN AREA ONLY  
(HOLD DOWN STYLE "F").

### TERMINAL OPTION

50u" NI UNDERPLATE; 30u" GXT CONTACT AREA,100u" TIN TAIL AREA;

0- DIM "A": 2.29 (TERMINAL TAIL LENGTH);

1- DIM "A": 3.71 (TERMINAL TAIL LENGTH);

NOTES:

1. MATERIAL:

CONTACTS: COPPER ALLOY

SHIELD: COPPER ALLOY

HOUSING: UL 94V-0 THERMOPLASTIC. COLOR: SEE PRODUCT CODE

2. PLATING:

CONTACTS: GOLD FLASH OVER PALLADIUM NICKEL (0.76um MINIMUM)  
IN CONTACT AREA; 2.5 um TIN MINIMUM IN SOLDER TAIL AREA.

1.27  $\mu\text{m}$  MINIMUM NICKEL UNDERPLATE OVER ALL SURFACES.

SHIELD: SEE PRODUCT NUMBER CODE.

(THE PLATING MEASURE POINT ON THE SHIELD HOLD DOWN AREA ONLY).

- ③. DATUMS & BASIC DIMENSIONS TO BE DETERMINED BY CUSTOMER

4. RECOMMENDED PCB BOARD THICKNESS IS 1.00 ~ 1.60mm EXCEPT 73725-1191BLF; 73725-1191BLF CAN BE USED FOR THE PCB BOARD THICKNESS 2.30 ~ 2.65mm.

- ⑤. MAXIMUM PANEL THICKNESS TO BE 2.67mm IF MOUNTED BEHIND PANEL

6. METAL SHELL SLIVER 0.20 MAX.

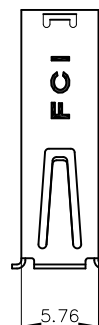
7. NI PLATING DOES NOT COMPLY WITH THE USB STANDARDS  
(TO BE CONTINUED)

- LEAD FREE OPTION  
SEE NOTE 9

- PACKAGING OPTION

B - TUBE

R - TAPE&amp;REEL

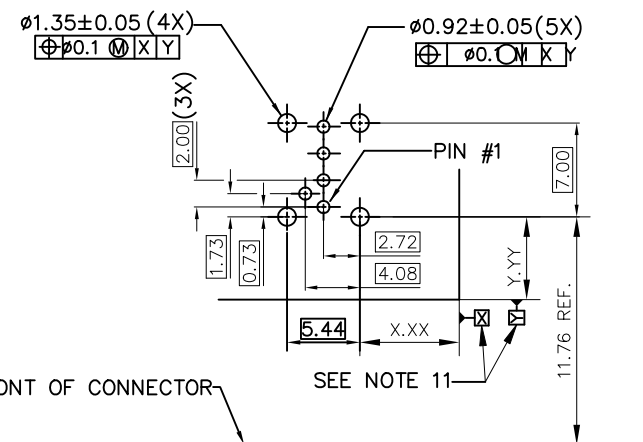


SENSOR CONTACT

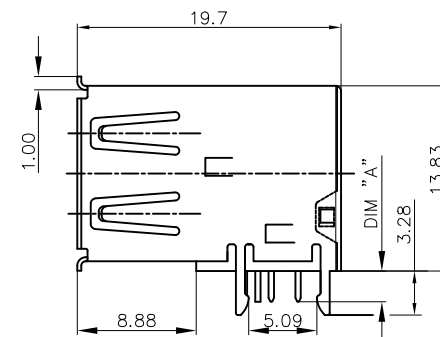
 $5.12 \pm 0.10$ 

— POS. #1



WITH SENSOR CONTACT



PC BOARD MOUNTING DIMENSIONS FOR 5 PIN



FOR 73725-X0X0B  
HOLD DOWN STYLE "A"

mat'l. code				surface <sup>123</sup> ISO 1302 ✓		tolerance ISO 406 ISO 1101		projection 		product family HPL 511 USB 2.0			
ltr	ecn no	dr	date	tolerances unless otherwise specified						title			
AJ	ELX-N-27706	LZ	2017/08/15	angles linear		.0±.30 .00±.20 .000±.10		mm		USB UP-RIGHT RECEPT			
AD	ELX-N-01006	A.ZH	06/25/2012	0°±2°				scale 1:1					
AE	ELX-N-13463	A.ZH	11/14/2012	dr	PAMP		5/20/97		dwg no		sheet 1 of 4		size
AF	ELX-N-14592	J.HAN	06/10/2013	engr	R Y LIU		5/20/97		Amphenol FCI		73725		A3
AG	ELX-N-21594	LQ	08/04/2015	chr	R Y LIU		5/20/97						
AH	ELX-N-21919	LQ	08/04/2015	app'd	JENN TSAO		5/20/97		type		Product Customer Drawing		
sheet index	revision	sheet											

PRODUCT NO.  
73725

(CONTINUED)

8. P/N'S WITH SUFFIX "LF" ARE LEAD FREE P/N'S

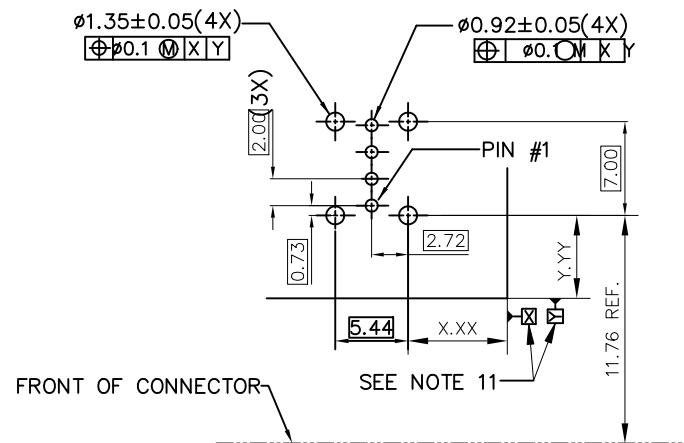
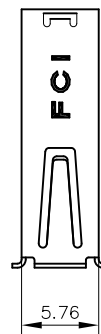
FOR LEAD FREE P/N, THE PRODUCT MEET EUROPEAN UNION DIRECTIVES AND OTHER COUNTRY REGULATION AS DESCRIBED IN GS-22-008

FOR THE PRODUCTS WITH THE METAL SHELL PLATING NICKEL AND MATTE SN CAN WITHSTAND EXPOSURE TO 260°C PEAK TEMPERATURE FOR 40 SECONDS IN A CONVECTION, INFRA-RED OR VAPOR PHASE REFLOW PROCESS; FOR THE PRODUCTS WITH METAL SHELL PLATING BRIGHT SN OR SEMI-BRIGHT SN CAN'T WITHSTAND REFLOW AND JUST CAN WITHSTAND EXPOSURE TO 260°C PEAK TEMPERATURE FOR 10 SECONDS IN WAVE SOLDERING PROCESS.

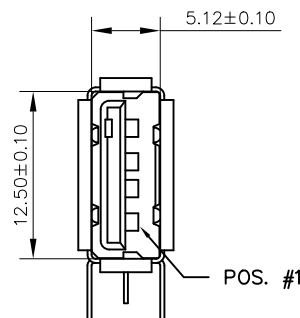
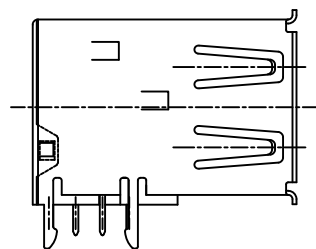
FOR ALL LEAD FREE P/N'S, WITH SUFFIX LF.

12. THE PRODUCT CAN BE USED FOR PIP PROCESS

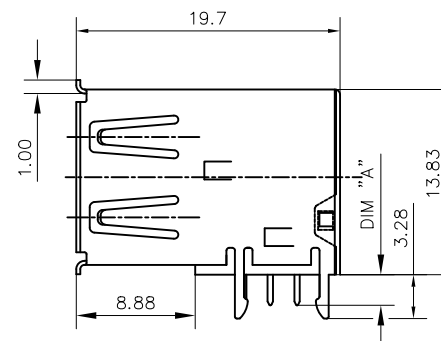
13. DATUM OF CUSTOMER'S PCB LAYOUT.



PC BOARD MOUNTING DIMENSIONS FOR 4 PIN

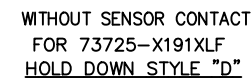
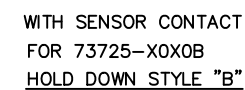
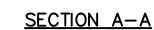
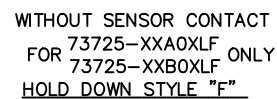
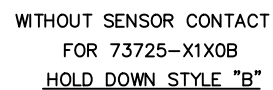


WITHOUT SENSOR CONTACT



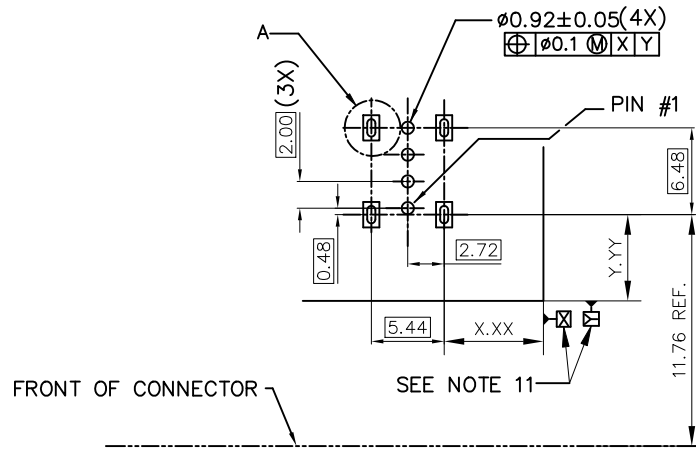
FOR 73725-X1X0B  
HOLD DOWN STYLE "A"

mat'l. code				surface <sup>123</sup> /tolerance		projection		product family			
				ISO 1302 ✓ ISO 406 ISO 1101				HPL 511 USB 2.0			
ltr	ecn	no	dr	date		tolerances unless otherwise specified		title			
AJ						mm		USB UP-RIGHT RECEPT			
						mm					
						scale 1:1					

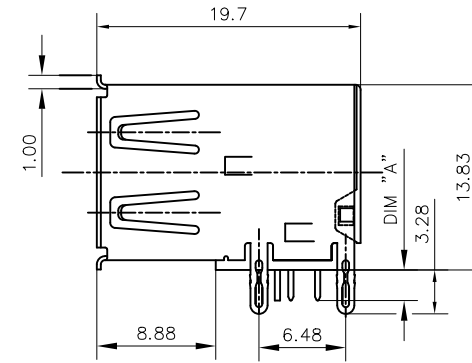
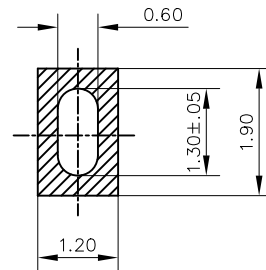


mat'l. code				surface <sup>123</sup> /tolerance ISO 1302 ✓ ISO 406 ISO 1101			projection 			product family HPL 511 USB 2.0		
ltr	ecn no	dr	date	tolerances unless otherwise specified						title  USB UP-RIGHT RECEPT		
AJ				angles linear .0±.30								
				.00±.20								
				0°±2' .000±.10			scale 1:1					
				dr	PAMP	5/20/97	Amphenol FCI			dwg no sheet 3 of 4 size		
				eng	R Y LIU	5/20/97				73725 A3		
				chr	R Y LIU	5/20/97						
				app	JENN TSAO	5/20/97						
sheet index	revision sheet									type Product Customer Drawing		

PRODUCT NO.  
73725



PC BOARD MOUNTING DIMENSIONS FOR 4 PIN



WITHOUT SENSOR CONTACT  
FOR 73725-X150B  
HOLD DOWN STYLE "C"

mat'l. code				surface <sup>123</sup>	tolerance	projection	product family		
				ISO 1302 ✓	ISO 406 ISO 1101		HPL 511 USB 2.0		
ltr	ecn no	dr	date	tolerances unless otherwise specified			title		
AJ				angles	.0±.30	mm	USB UP-RIGHT RECEPT		
				linear	.00±.20				
				0°±2°	.000±.10	scale 1:1			
				dr	PAMP	5/20/97	dwg no		
				engr	R Y LIU	5/20/97	sheet 4 of 4		
				chr	R Y LIU	5/20/97	73725		
				appd	JENN TSAO	5/20/97	type Product Customer Drawing		
sheet index	revision sheet								