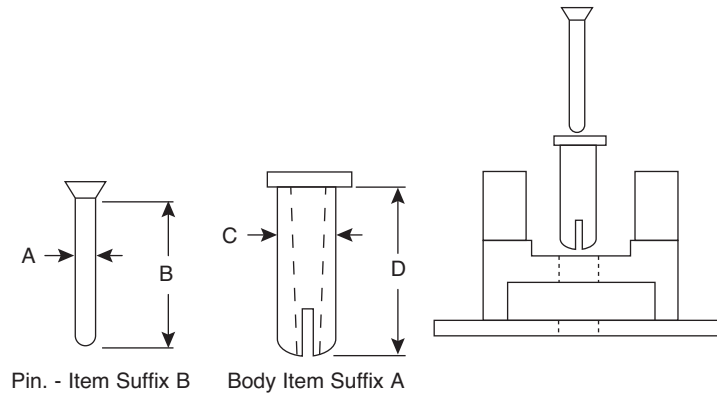


**Date Last Revised: 1-5-09**

**DIMENSIONS: In**



Body Item "A" is inserted through the connector and the chassis. Pin item "B" then is pushed or tapped into the body to secure the connector to the chassis. The head design of the pin permits easy removal, and then the connector can be easily replaced

- Molded in Natural Nylon 6/6

Mouser Stock Num	Description	A	B	C	D
561-0001A	2 Pc. Edge Connector Body			0.109±0.005	0.305±0.005
561-0001B	2 Pc. Edge Connector Pin	0.069±0.005	0.330±0.005		
561-0002A	2 Pc. Edge Connector Body			0.110±0.005	0.350±0.005
561-0002B	2 Pc. Edge Connector Pin	0.069±0.005	0.360±0.005		
561-0003A	2 Pc. Edge Connector Body			0.110±0.005	0.480±0.005
561-0003B	2 Pc. Edge Connector Pin	0.069±0.005	0.450±0.005		
561-0004A	2 Pc. Edge Connector Body			0.096±0.005	0.340±0.005
561-0004B	2 Pc. Edge Connector Pin	0.069±0.005	0.340±0.005		