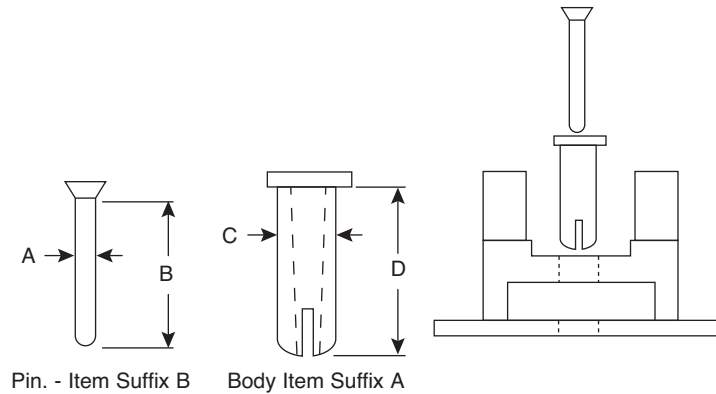


DIMENSIONS: In



Body Item "A" is inserted through the connector and the chassis. Pin item "B" then is pushed or tapped into the body to secure the connector to the chassis. The head design of the pin permits easy removal, and then the connector can be easily replaced

- Molded in Natural Nylon 6/6

| Mouser Stock Num | Description | A | B | C | D |
|------------------|---------------------------|-------------|-------------|-------------|-------------|
| 561-0001A | 2 Pc. Edge Connector Body | | | 0.109±0.005 | 0.305±0.005 |
| 561-0001B | 2 Pc. Edge Connector Pin | 0.069±0.005 | 0.330±0.005 | | |
| 561-0002A | 2 Pc. Edge Connector Body | | | 0.110±0.005 | 0.350±0.005 |
| 561-0002B | 2 Pc. Edge Connector Pin | 0.069±0.005 | 0.360±0.005 | | |
| 561-0003A | 2 Pc. Edge Connector Body | | | 0.110±0.005 | 0.480±0.005 |
| 561-0003B | 2 Pc. Edge Connector Pin | 0.069±0.005 | 0.450±0.005 | | |
| 561-0004A | 2 Pc. Edge Connector Body | | | 0.096±0.005 | 0.340±0.005 |
| 561-0004B | 2 Pc. Edge Connector Pin | 0.069±0.005 | 0.340±0.005 | | |