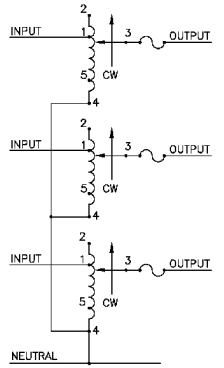
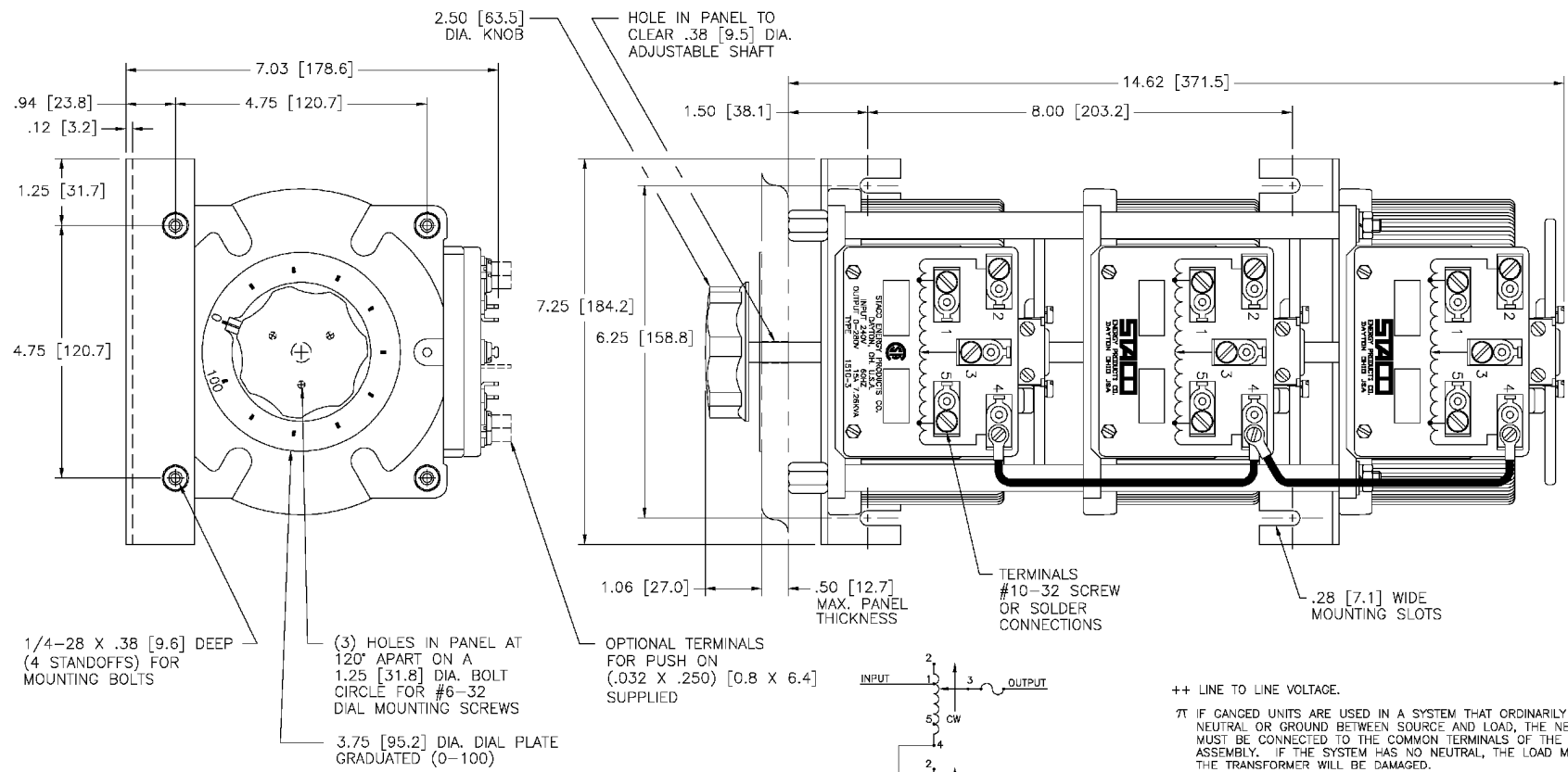


REV. NO.	031-3625		
REV. D	REVISIONS		
REV. A	24892	7/17/02	REDRAWN TO CAD
REV. B	25594	10/25/03	MOVED INPUT FROM 5 TO 1
REV. C	25797	10/13/06	ADDED CSA LOGO



SCHEMATIC
THREE PHASE WYE
FUSES RECOMMENDED BUT NOT SUPPLIED

- ++ LINE TO LINE VOLTAGE.
- 7T IF CANGED UNITS ARE USED IN A SYSTEM THAT ORDINARILY HAS A COMMON NEUTRAL OR GROUND BETWEEN SOURCE AND LOAD, THE NEUTRAL OR GROUND MUST BE CONNECTED TO THE COMMON TERMINALS OF THE VARIABLE TRANSFORMER ASSEMBLY. IF THE SYSTEM HAS NO NEUTRAL, THE LOAD MUST BE BALANCED OR THE TRANSFORMER WILL BE DAMAGED.
- JUMPER PROVIDED IN STANDARD COMMON POSITION AND SHOULD BE MOVED OR REMOVED AS REQUIRED.

WIRING	SPECIFICATIONS						TERMINAL CONNECTIONS					
	INPUT		OUTPUT		SHAFT ROTATION TO INCREASE VOLTAGE	FOR INCREASING VOLTAGE AS VIEWED FROM BASE END ■						
	VOLTS	HERTZ	VOLTS	CONSTANT CURRENT LOAD		INPUT	JUMPER OUTPUT					
THREE PHASE WYE 7T	240	50/60	0-240	15	6.22	20	8.30	CW	2-2-2	4-4-4	3-3-3	
			0-280	15	7.26	---	---	---	---	CCW	1-1-1	4-4-4
									CCW	5-5-5	2-2-2	3-3-3

UNLESS OTHERWISE SPECIFIED, TOLERANCE IS AS SHOWN IN FIGURE

DATE: 7/17/02

DESIGNER: TIM RAU

ENGINEER: DATE: _____

STACO PRODUCTS CO. 1510-3

WEIGHT APPROX. 55.50 LBS.

SCALE: 1"=1"

SHEET 1 OF 1

REV. NO. 031-3625

