

MICRO SWITCH

A DIVISION OF MINNEAPOLIS-HONEYWELL REGULATOR COMPANY
PREP. REPORT, ILLINOIS

FED. MFR. CODE 91929

ASSEMBLY - PUSHBUTTON SWITCH

CATALOG LISTING

1PB73-T2

AR

1PB73-T2

PAGE 1 OF 1

M

DRAWING
NUMBER

6

ISSUE

REPLACES

RELEASE NO. ETS SR 9055

30 OCT 98

J A F

CHECK

26 MAY 60

K A C

CHECK

14 JUNE 60

C C H

CHECK

26 MAY 60

C C H

CHECK

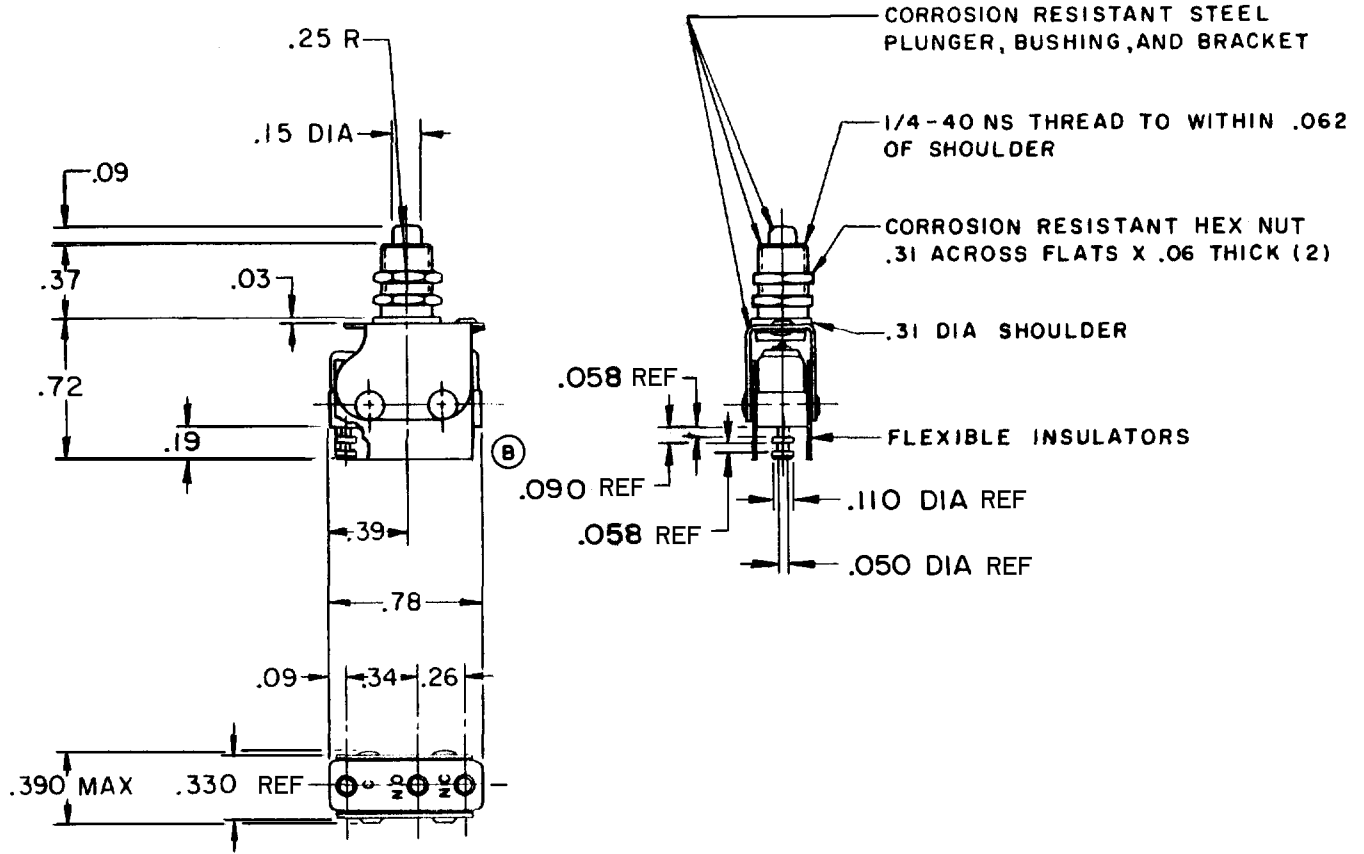
26 MAY 60

C C H

CHECK

26 MAY 60

C C H



NOTES

- ① 1 - UNIT INCLUDES CAT. LIST "ISM" TYPE BASIC SWITCH
- 2 - TERMINALS ARE PLATED FOR SOLDERING
- 3 - RECOMMENDED FOR MANUAL OPERATION ONLY
- 4 - CONTACT MATERIAL - 24 K SOLID GOLD

THIS DRAWING COVERS A PROPRIETARY ITEM AND IS THE PROPERTY OF MICRO SWITCH, A DIVISION OF MINNEAPOLIS-HONEYWELL REGULATOR CO. THIS DRAWING IS NOT TO BE COPIED OR USED WITHOUT THE APPROVAL OF MICRO SWITCH.

CHARACTERISTICS

OPERATING FORCE - - - - 1 LB APPROX

ELECTRICAL DATA

CONTACT ARRANGEMENT
S P D T

BREAK DISTANCE
.010 MIN

30 VOLTS DC RATING

INDUCTIVE - - - - SEA LEVEL - - - 1/2 AMP
50,000 FT. - - - 1/2 AMP

RESISTIVE - - - - SEA LEVEL - - - 1 AMP
50,000 FT. - - - 1 AMP

MAXIMUM INRUSH - - - - 2 AMP

SCALE FULL

DO NOT SCALE PRINT

UNLESS OTHERWISE SPECIFIED

DIMENSIONS ARE IN INCHES

TOLERANCES ARE:

ONE PLACE (.0) ±.030
TWO PLACE (.00) ±.015
THREE PLACE (.000) ±.005
ANGLES ±

WEIGHT

DRAWN

FO-50378