

10ER7 & 10ER7M

SAFETY ORGANIZATION(S):

THIS FILTER HAS BEEN FORMALLY RECOGNIZED, CERTIFIED OR APPROVED BY THE LISTED AGENCY. THEREFORE, ALL TEST/REQUIREMENTS SPECIFIED IN THE LATEST REVISION OF THE FOLLOWING AGENCY STANDARDS HAVE BEEN MET.

UL RECOGNIZED	UL 1289
CSA CERTIFIED	CSA 22.2, NO.0,0.4,8
VDE APPROVED	VDE 565-3
SEV APPROVED	SEV 1055/TP1977/5.1.1

LTR	DESCRIPTION	DATE	DWN	APVD
F1	REVISED PER ECO-09-026495	17DEC09	KK	AEG

RELIABILITY SPECIFICATIONS:

STORAGE TEMPERATURE: -40°C TO +85°C
 HUMIDITY: 21 DAYS @ 40°C 95% RH
 CURRENT OVERLOAD TEST: 6 TIMES RATED CURRENT FOR 8 SECONDS

TEST SPECIFICATIONS:

INDUCTANCE: .99 mH NOMINAL
 CAPACITANCE: (MEASURED @ 1 KHz, 0.25VAC MAX., 25°C±1°C)
 LINE TO GROUND: .006 µF ±20%
 LINE TO LINE: .301 µF ±20%
 DISCHARGE RESISTOR: 680KΩ

LINE/GROUND AND LINE/LINE: 5000Ω (MIN) AT 100VDC
 INSULATION RESISTANCE: 20°C AND 50% RH
RECOMMENDED RECEIVING INSPECTION HIPOT:

LINES TO GROUND: 2250 VDC FOR 1 MINUTE
 LINE TO LINE: 1450 VDC FOR 1 MINUTE

FILTER APPROVAL:

THE BEST WAY TO SELECT AND QUALIFY A FILTER IS FOR YOUR ENGINEERING TO TEST THE UNIT IN YOUR EQUIPMENT.

OPERATING SPECIFICATIONS:

LINE VOLTAGE/CURRENT: 10 AMP, 120/250 VAC
 5 AMP./40°C, 250 VAC

LINE FREQUENCY: 50-60Hz

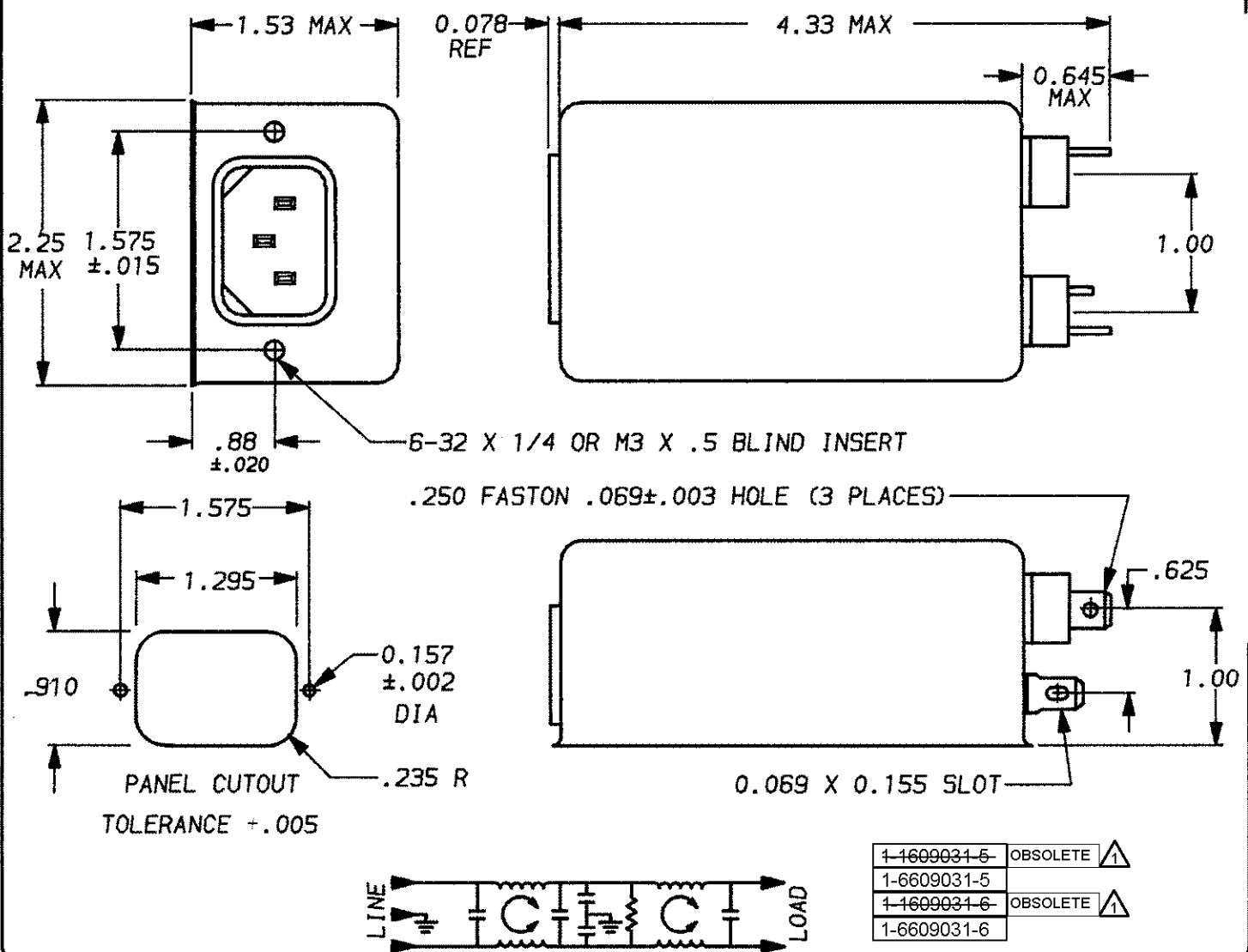
MAX. LEAKAGE CURRENT, EACH:
 LINE TO GROUND: .25 mA AT 120V 60Hz
 .40 mA at 250V 50Hz

OPERATING AMBIENT TEMP. RANGE: -10°C TO +40°C @ RATED CURRENT, I_r

IN AN AMBIENT, T_a, HIGHER THAN 40°C, THE MAXIMUM OPERATING CURRENT, I_o, IS AS FOLLOWS:

$$I_o = I_r \sqrt{\frac{85 - T_a}{45}}$$

1 OBSOLETE PARTS: OBSOLETE CIS STREAMLINING PER D.RENAUD/D.SINISI



1-1609031-5	OBSOLETE	▲
1-6609031-5		
1-1609031-6	OBSOLETE	▲
1-6609031-6		

50Ω - 50Ω (MINIMUM) INSERTION LOSS											UNLESS OTHERWISE SPECIFIED, TOLERANCE TO BE ±.025		 LIBERTYVILLE, IL 60048 POWER LINE FILTER	
FREQUENCY MHz	.15	.3	.5	.6	1	2	5	10	20	30	/	/		
COMMON dB	5	26	42	44	52	58	65	65	65	65	/	/	This document is proprietary to CORCOM INC. and is not to be reproduced nor used for manufacturing purposes except on CORCOM'S prior written consent.	
DIFF. dB	7	2	7	10	40	65	65	65	65	65	/	/	DATE: 9-23-93 CATALOG NO. 10ER7 & 10ER7M	
											APPROV. T.A.M.		CAD NO. 10ER7-03	