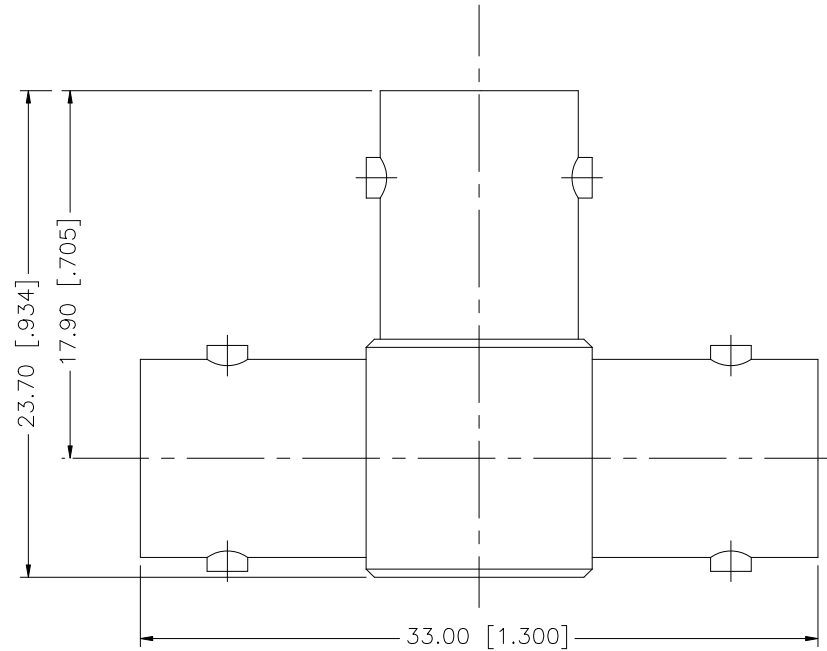


REV.	DATE	DESCRIPTION
NC	12/11/07	INITIAL RELEASE



8					<small>UNLESS OTHERWISE SPECIFIED DIMENSIONS ARE IN MILLIMETERS. DIMENSIONS IN [ ] ARE IN INCHES AND FOR CUSTOMER REFERENCE ONLY.</small> <small>UNLESS OTHERWISE SPECIFIED TOLERANCES FOR MILLIMETERS ARE:  0.5 - 8mm ± 0.20mm  8 - 30mm ± 0.40mm  30 - 120mm ± 0.50mm</small> <small>UNLESS OTHERWISE SPECIFIED TOLERANCES FOR INCHES ARE:  .020 - .315 = ± 0.007"  .315 - 1.180 = ± 0.015"  1.180 - 4.724 = ± 0.020"</small>	APPROVALS	DATE	<h1 style="color: blue;">Amphenol Connex</h1>				
7						DRAWN	G.R.S.				12/10/07	
6						CHECKED			PART DESCRIPTION <h2 style="text-align: center;">BNC JACK, JACK, JACK TEE ADAPTER</h2> <h3 style="text-align: center;">75 ohm</h3>			
5						ISSUED						
4						SHEET	1 OF 1					
3	CONTACT PIN	PHOS. BRONZE	GOLD	2				PART NO.				
2	INSULATOR	DELTRIN	NATURAL	1				112456				
1	BODY	BRASS	NICKEL	1								
	DESCRIPTION	MATERIAL	FINISH	QTY	DO NOT SCALE DRAWING			CAD FILE	DWG. NO.	REV.	SIZE	SCALE
								C:/112/112456.DWG	112456.DWG	NC	A	NA