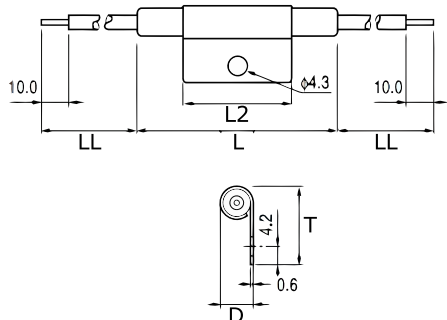


KEMET Part Number: TRS1-110MLR00V
(USEC110MLR0000)

KEMET, TRS, Thermal Reed Switch, Axial, 2.5C Temperature Accuracy, High Reliability, High-Speed Response, Long Operational Life, Excellent Environmental Durability, High Temperature Accuracy, 110°C, Make



| Dimensions | |
|------------|------------|
| D | 7.65mm NOM |
| L | 54mm NOM |
| L2 | 34mm NOM |
| T | 18.8mm MAX |
| LL | 200mm NOM |

| Packaging Specifications | |
|--------------------------|----------------|
| Packaging: | Rubberband Box |
| Packaging Quantity: | 500 |
| Weight: | 8.5 g |

| General Information | |
|---------------------|---|
| Series: | TRS |
| Type: | Thermal Reed Switch |
| Style: | Axial |
| Description: | Thermal Reed Switch |
| Features: | High Reliability, High-Speed Response, Long Operational Life, Excellent Environmental Durability, High Temperature Accuracy |
| Lead: | Cables |
| RoHS: | Yes |

| Specifications | |
|------------------------------|--|
| Switching Temperature: | 110C +/-2.5C |
| Temperature Range: | -20/+130°C |
| Contact Type: | Make |
| Voltage AC: | 220 VAC MAX (Opening/Closing) |
| Current: | 0.045 Amps AC MAX (Opening/Closing), 1 mAmps MIN (5VDC, Opening/Closing) |
| Resistance: | 150 mOhms MAX (Contact Resistance) |
| Max Opening/Closing Power: | 10 W (AC) |
| Max Opening/Closing Voltage: | 220 V (AC) |
| Differential Temperature: | 10C Maximum |