

EXPLOSION-PROOF SINGLE POLE CABLE PULL NOMENCLATURE

M CLSX SERIES CHART 1

CLSX - - - - -

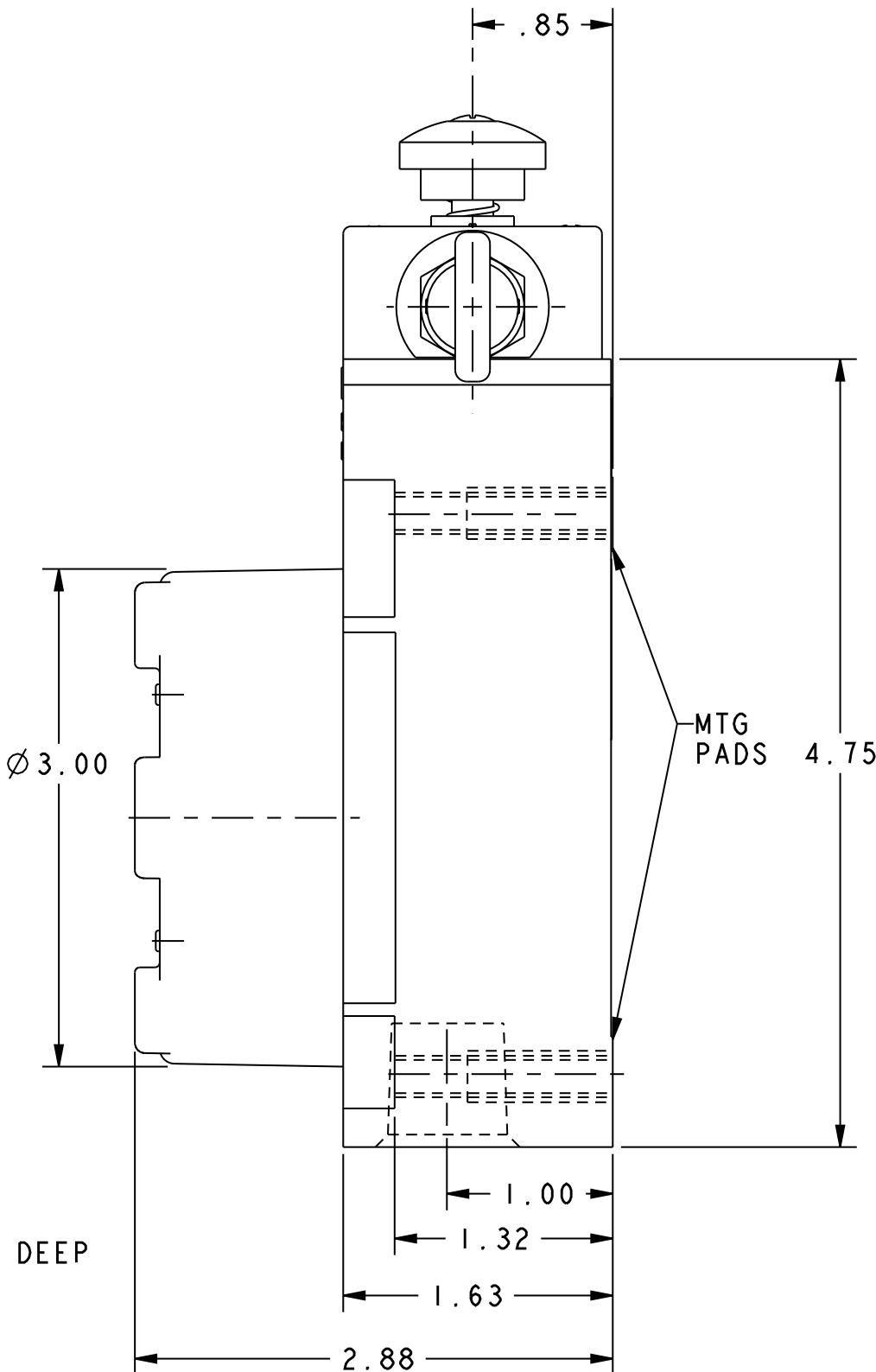
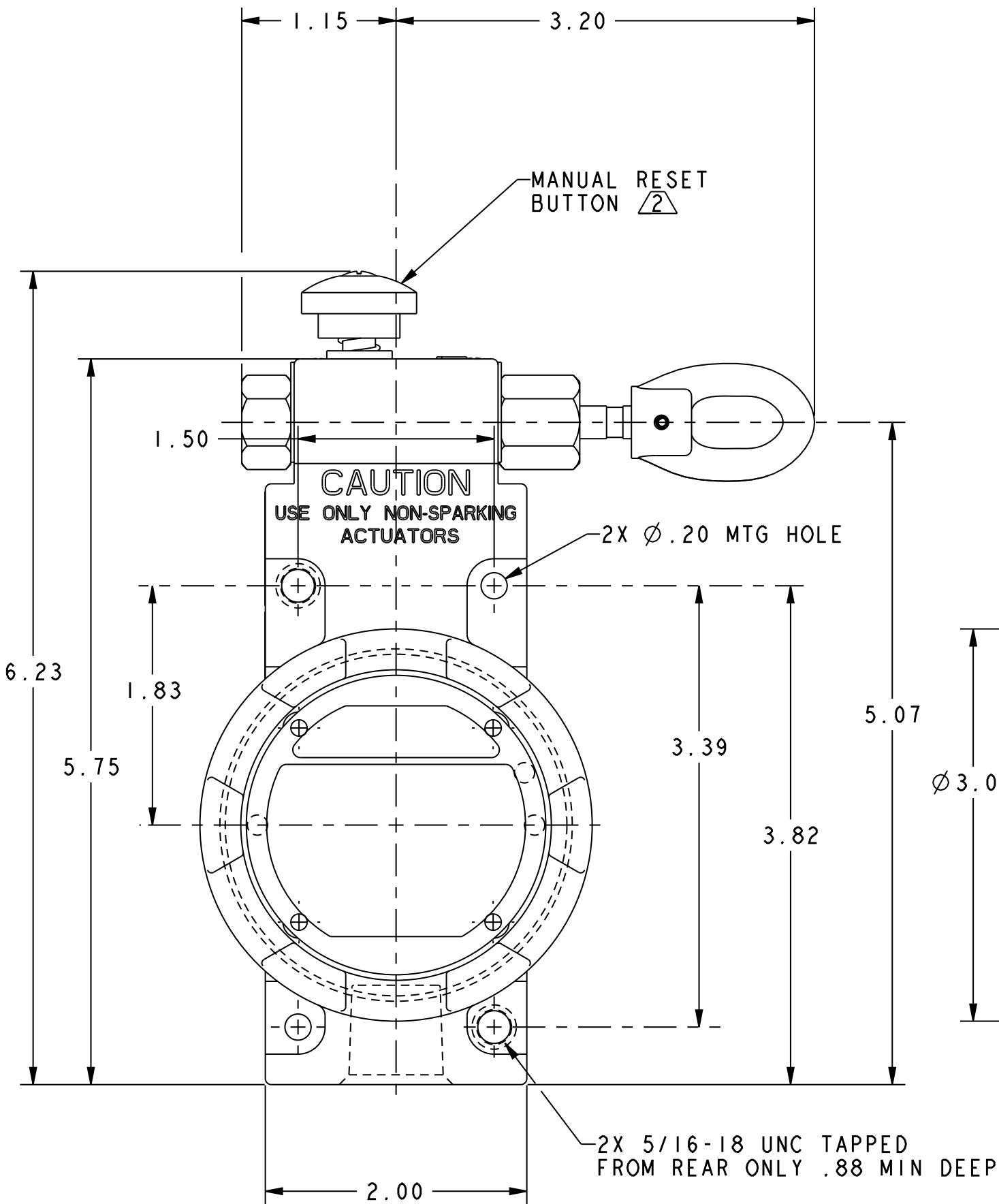
BODY CODE	
B	1/2 NPT CONDUIT OPENING
E	3/4 NPT CONDUIT OPENING

BASIC SWITCH CODE	
1	INC DIRECT ACTING (HDLS)
2	INO-INC SNAP ACTION (HDLS - NON-SAFETY APPLICATION, BLUE BODY ONLY)
4	INO-INC DIRECT ACTING (SPEC. GLS)
8	2NC DIRECT ACTING
9	SPECIAL BASIC - SEE LETTERED MODIFICATION CODE

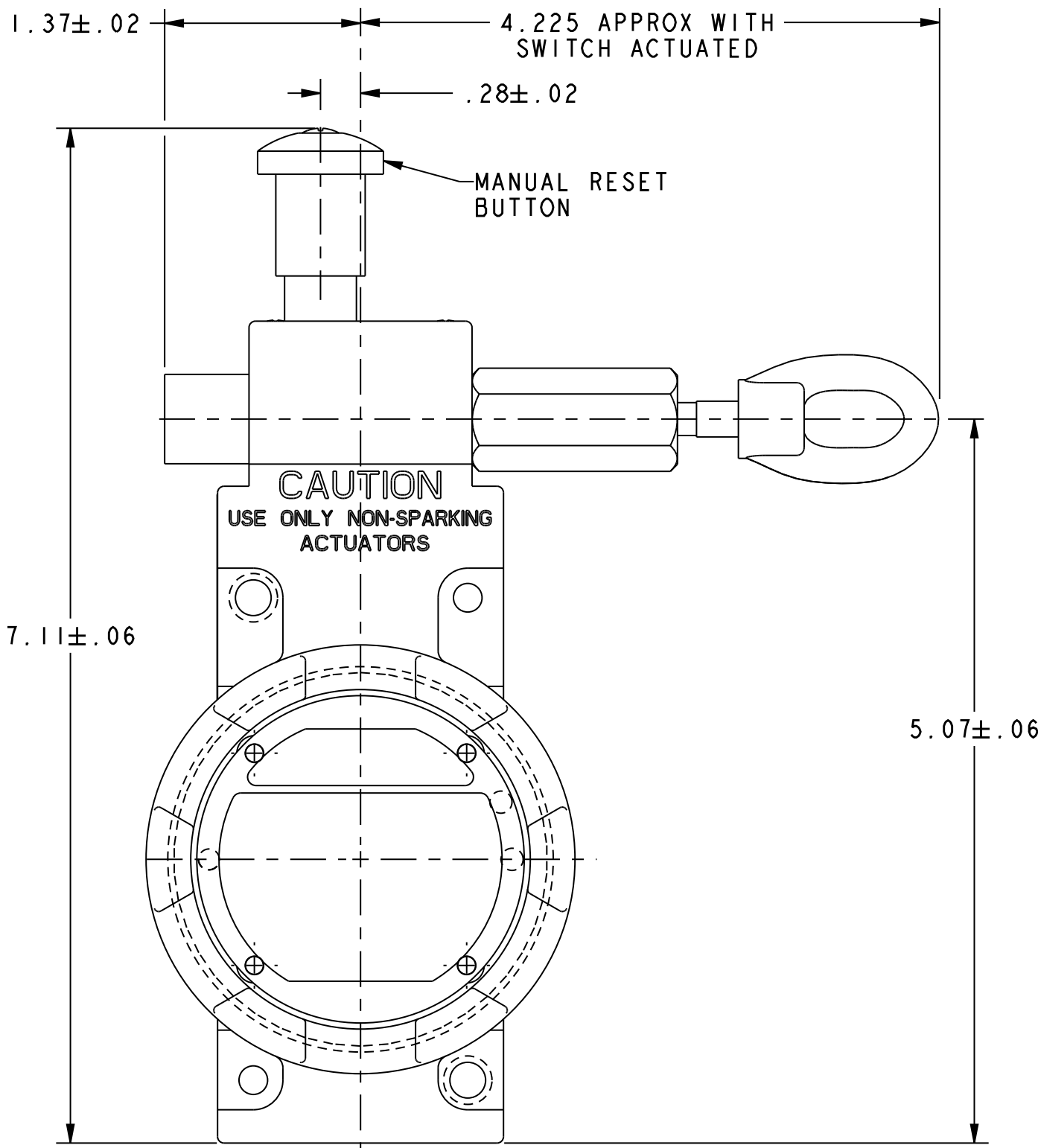
OPERATING HEAD CODE	
A	"MAINTAINED" RED BODY
B	"MOMENTARY" BLUE BODY
N	"MAINTAINED" W/O BROKEN CABLE DETECTION RED BODY
T	"MAINTAINED" SNAP ACTION RED BODY

MODIFICATION CODE *	
B	INO-3NC SLOW ACTING
E	2NO-2NC SLOW ACTING
F	INO-3NC SLOW ACTING GOLD PLATED
1	HEAD ASSEMBLED WITH ACTUATOR TO LEFT
2	HEAD ASSEMBLED WITH ACTUATOR TO FRONT
3	HEAD ASSEMBLED WITH ACTUATOR TO REAR

* LETTERED MODIFICATION CODES TO
PRECEDE NUMBERED CODES



WITH OPERATING HEAD CODES "A", "B", & "N"



WITH OPERATING HEAD CODE "T"

NOTE
1 - ALL DIMENSIONS ARE REFERENCE ONLY
2 - MANUAL RESET BUTTON NOT PRESENT ON OPERATING
HEAD CODE "B"
3 - NOMENCLATURE IS PROVIDED FOR IDENTIFICATION OF
EXISTING LISTINGS. NOT ALL COMBINATIONS ARE POSSIBLE

THIS DRAWING COVERS A PROPRIETARY ITEM AND IS THE PROPERTY OF MICRO SWITCH, A DIVISION OF
HONEYWELL. THIS DRAWING IS NOT TO BE COPIED OR USED WITHOUT THE APPROVAL OF MICRO SWITCH.

MICRO SWITCH
a Honeywell Division
FED. MFG. CODE 91929

SWITCH - ENCLOSED

CATALOG LISTING
CLSX SERIES CHART 1

THIRD ANGLE PROJECTION			
SCALE FULL			
DO NOT SCALE PRINT			
UNLESS OTHERWISE SPECIFIED TOLERANCES ARE			
ONE PLACE	(.0)	±.030	
TWO PLACES	(.00)	±.015	
THREE PLACES	(.000)	±.005	
ANGLES		±	
WEIGHT			

ANSI Y14.5M-1982 APPLIES