

LOC		DIST		REVISIONS				
P	LYR	DESCRIPTION			DATE	DWN	APVD	
	M1	REVISED PER ECR-12-011660			04FEB2013	KH	TM	

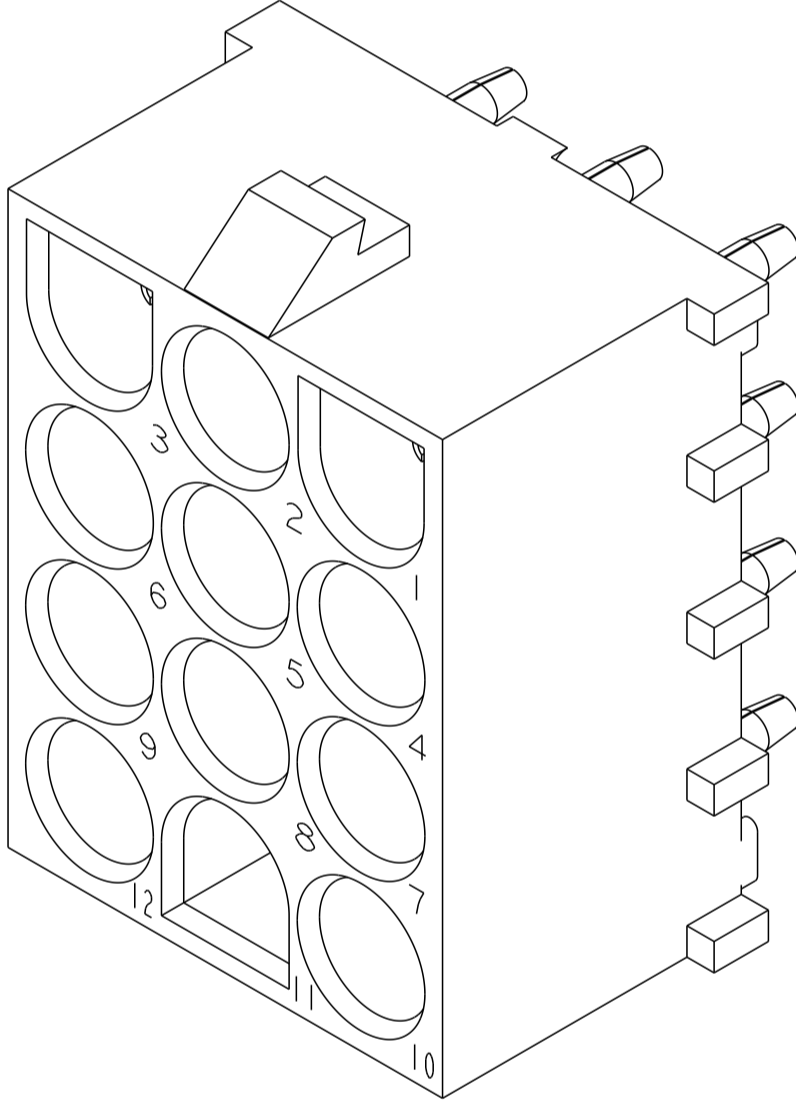
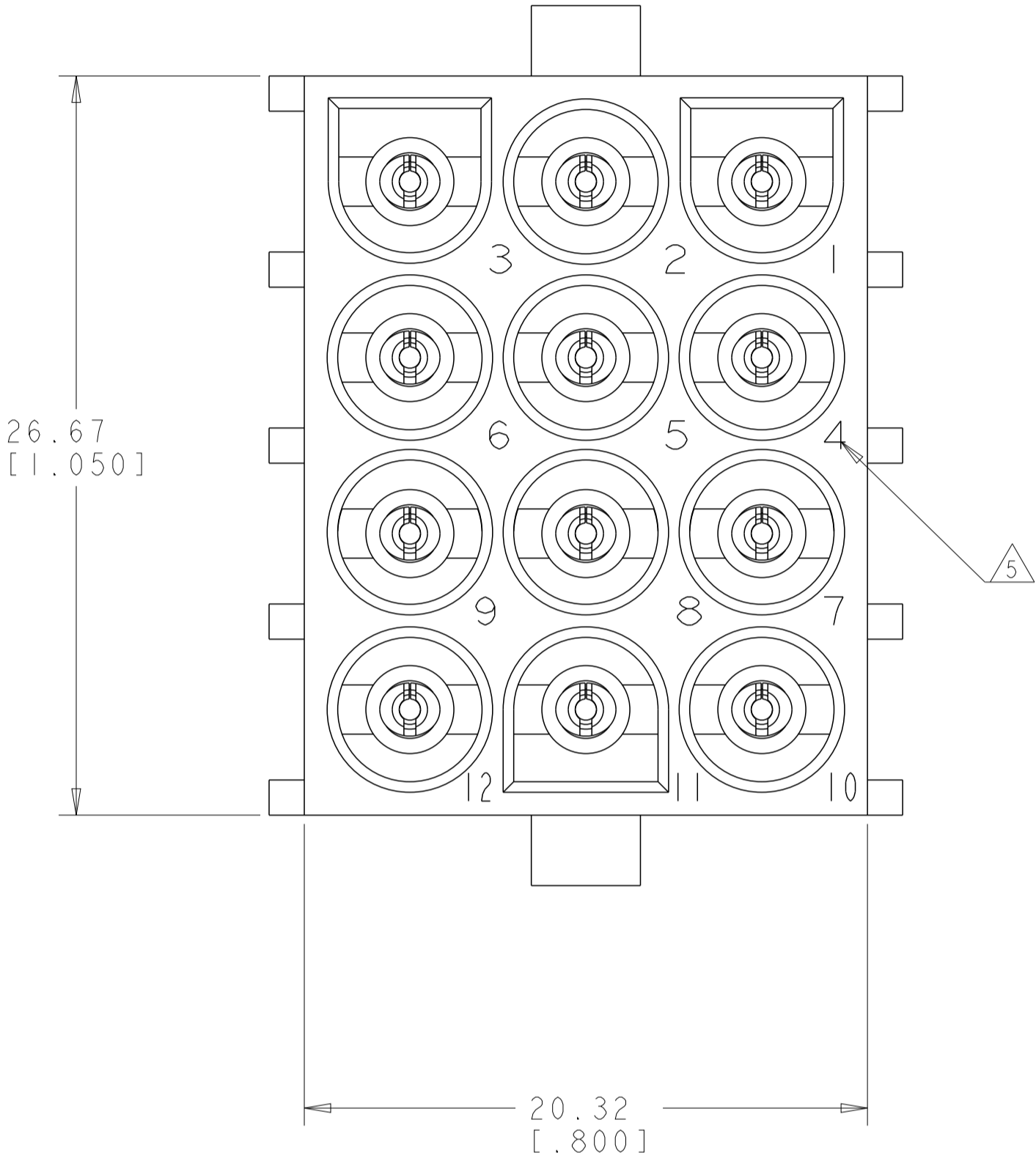
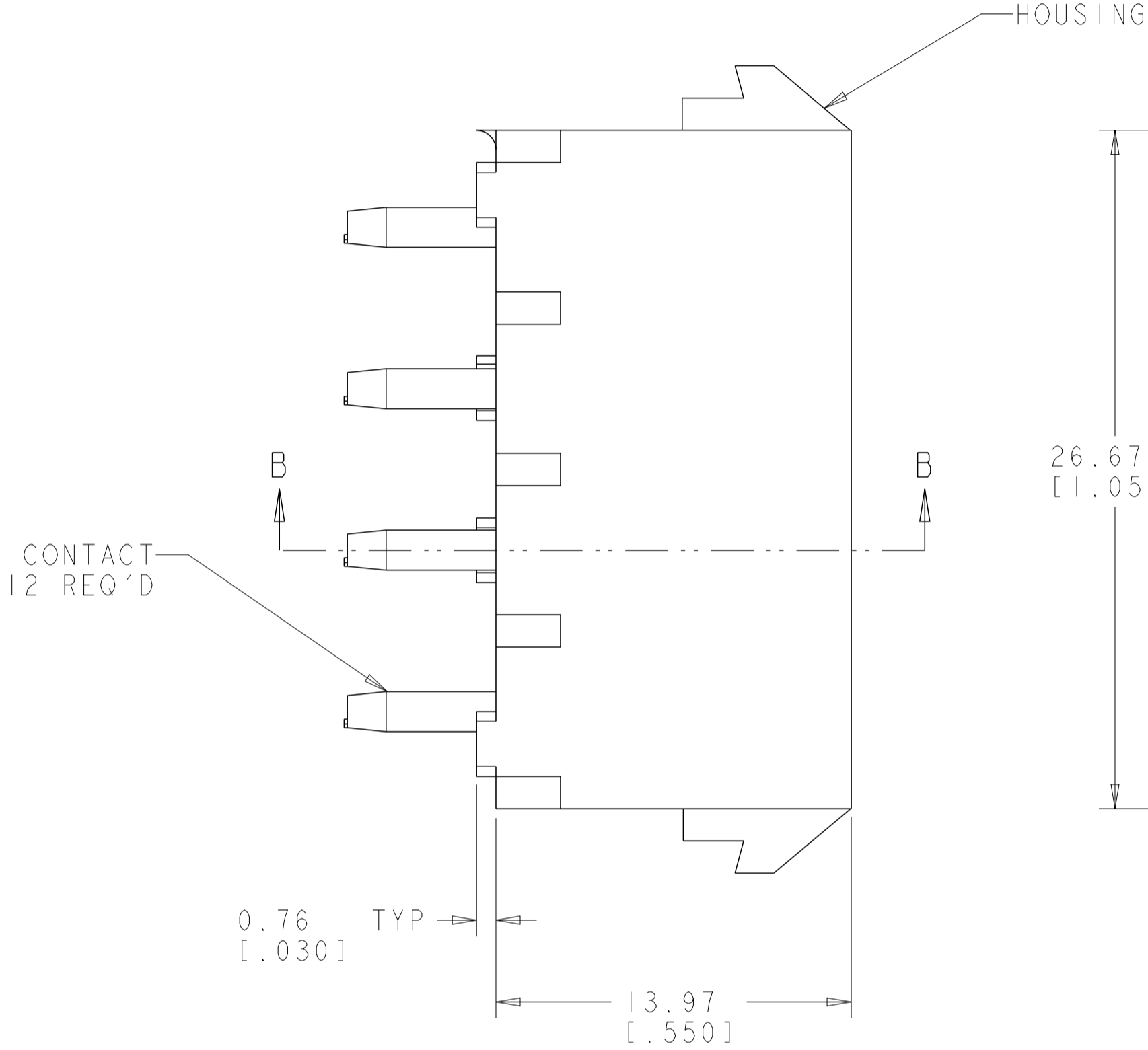
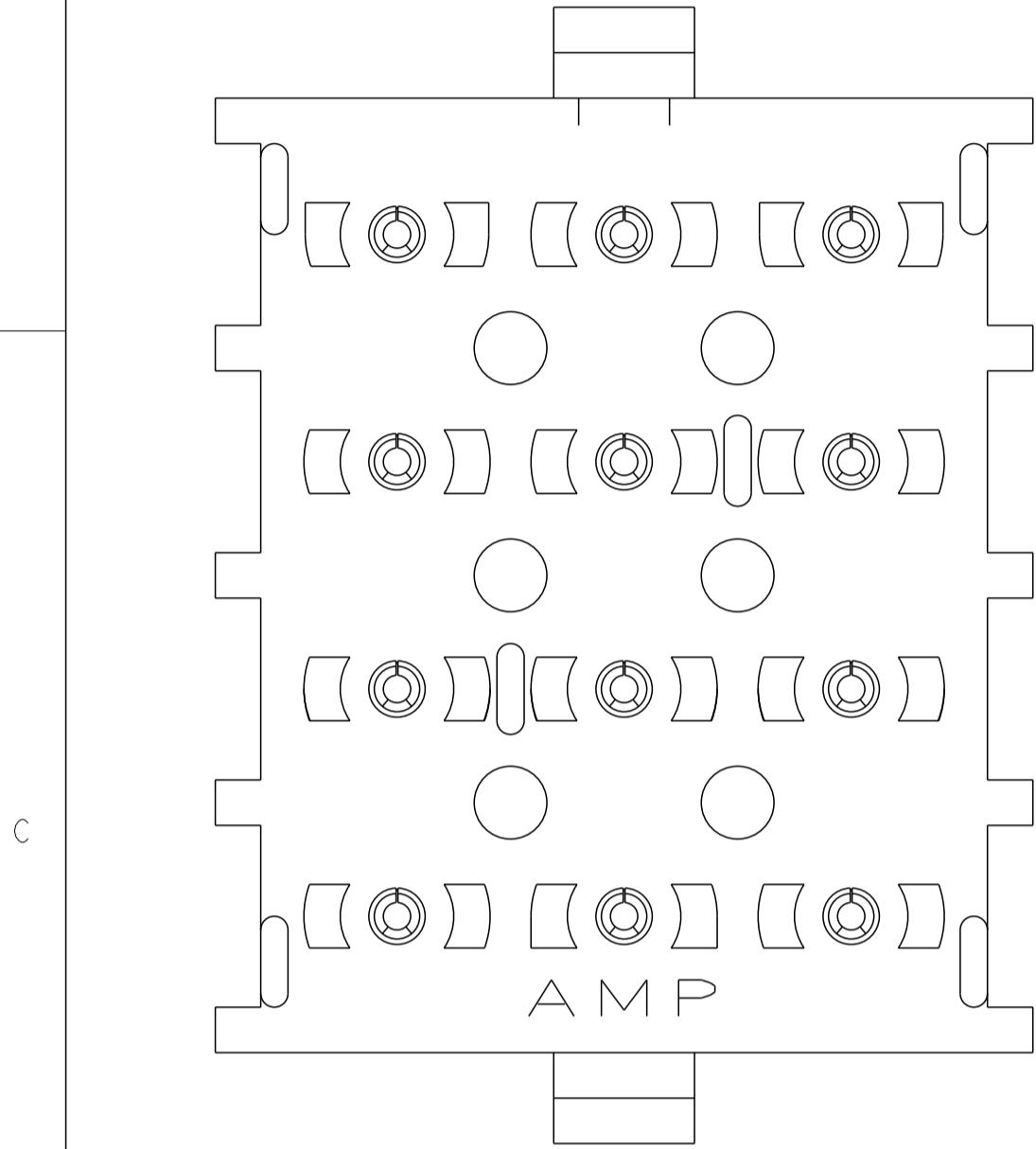
1. MATES WITH HOUSING 350735.
2. PARTS COMPLY TO AMP SOLDERABILITY SPECIFICATION 109-11-3.
- 3 CONTACT IS PLATED OVERALL WITH 0.00127 [0.000050] NICKEL, THEN 0.00076 [0.000030] GOLD OVER CONTACT LENGTH INDICATED AND TIN LEAD ON SOLDER TAIL END.
- 4 CIRCUIT IDENTIFICATION CHARACTERS ARE ADJACENT TO THE INDICATED CAVITIES, BUT LOCATION AND ORIENTATION MAY DIFFER FROM PRINT.
- 5 CONTACT IS PLATED OVERALL WITH 0.00127 [0.000050] NICKEL, THEN 0.00076 [0.000030] GOLD OVER CONTACT LENGTH INDICATED AND MATTE TIN ON SOLDER TAIL END.
6. DIMENSIONS IN BRACKETS ARE IN INCHES.
- 7 SUPERSEDED BY 350737-4

D

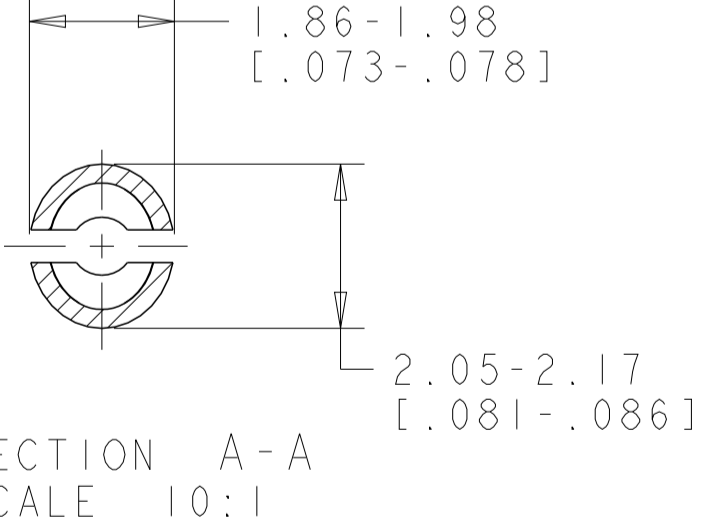
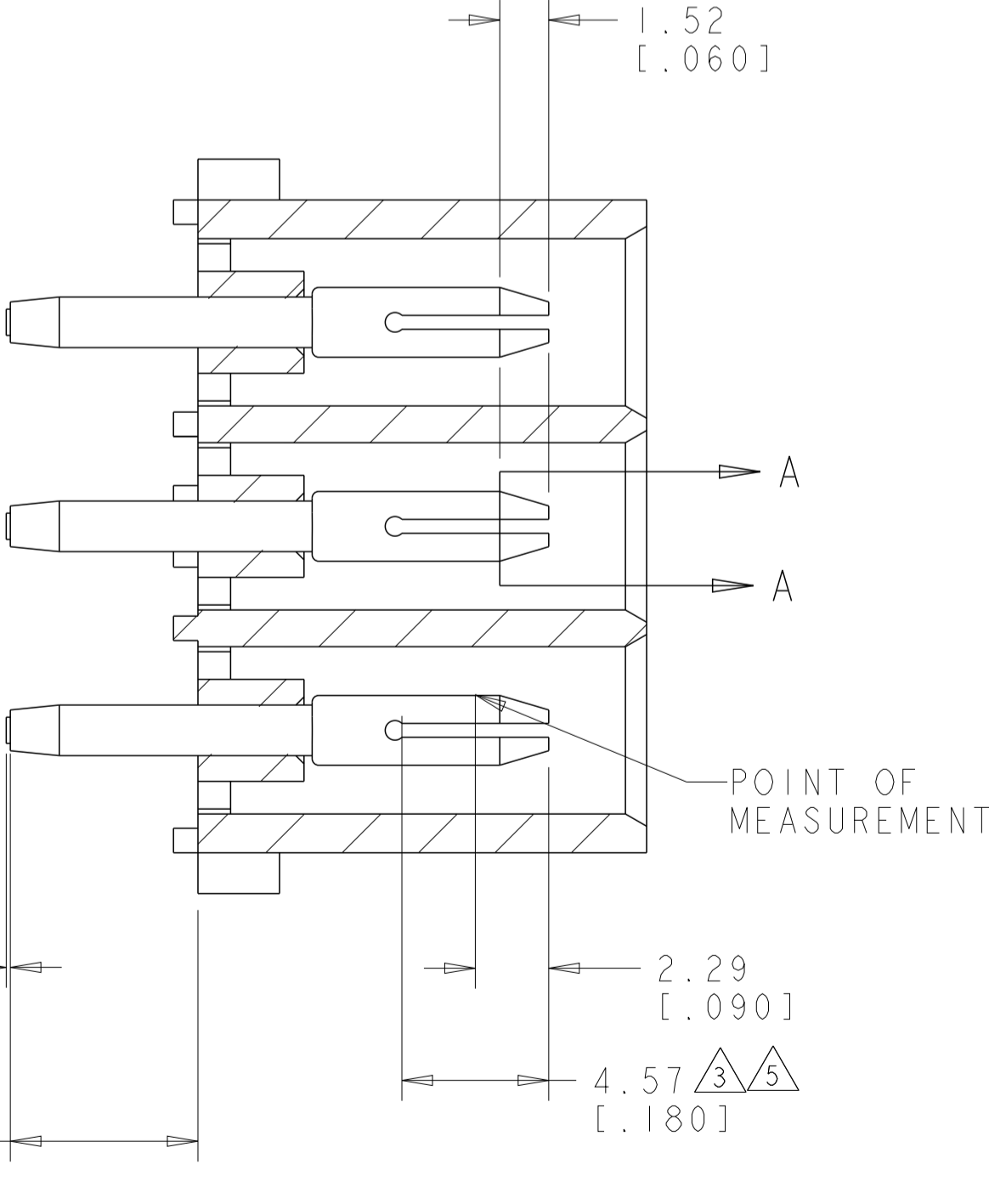
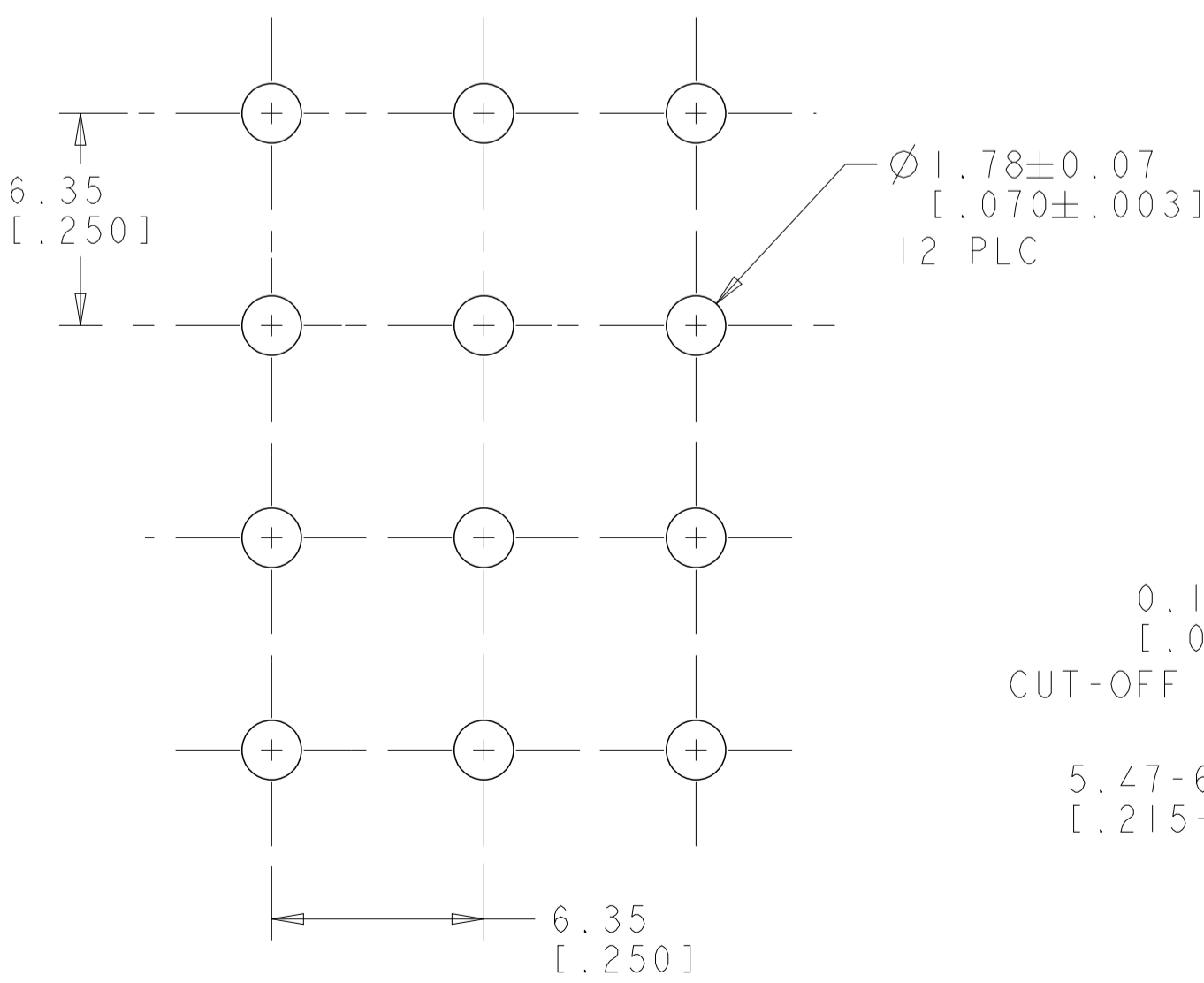
C

B

A



3 DIMENSIONAL MODEL
SCALE 4:1



PHOSPOR BRONZE, GOLD 5	NYLON, UL94V-0, NATURAL	350737-4
PHOSPOR BRONZE, GOLD 5	NYLON, UL94V-0, NATURAL	350737-2
PHOSPOR BRONZE, PRE-TIN	NYLON, UL94V-0, NATURAL	350737-1
PIN CONTACT MATERIAL AND FINISH	HOUSING MATERIAL AND COLOR	PART NUMBER

RECOMMENDED MOUNTING HOLE PATTERN
FOR 1.57 [.062] THICK P.C. BOARD
HOLE THAT CORRESPONDS TO REMOVED
CONTACT CAN BE OMITTED