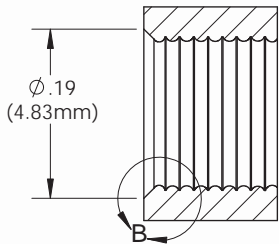
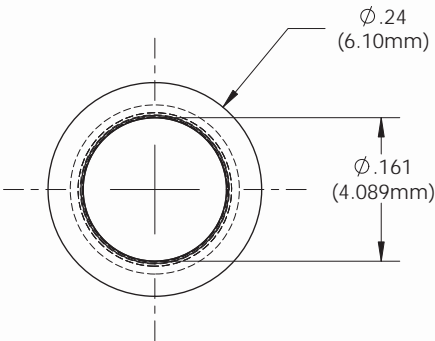
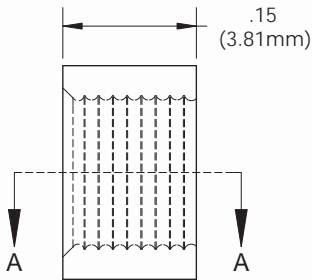
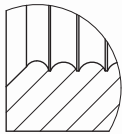


NOTES:
1) FINISH: Parts shall have a smooth appearance, min. 600 surface finish, with no gates and all flash removed
2) U.S. & Foreign Pat. Issued and Pend.

REVISIONS				
ECN #	REV	DESCRIPTION	DATE	INITIALS
	N/A	INITIAL RELEASE	10/25/85	JS
	001	REVISED PER ECR111009AZ01	2/8/10	KH



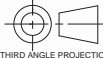
SECTION A-A



DETAIL B
SCALE 12 : 1



ISOMETRIC VIEW
SCALE 4:1

UNLESS OTHERWISE SPECIFIED DIMENSIONS ARE IN INCHES: ANGLES DECIMALS ± 1' X ±.020 XX ±.010 FINISH .XXX ±.005 BREAK ALL CORNERS AND SHARP EDGES .020 MAX  THIRD ANGLE PROJECTION PROPRIETARY AND CONFIDENTIAL THE INFORMATION CONTAINED IN THIS DRAWING IS THE SOLE PROPERTY OF VISUAL COMMUNICATIONS COMPANY, INC. ANY REPRODUCTION IN PART OR AS A WHOLE WITHOUT THE WRITTEN PERMISSION OF VISUAL COMMUNICATIONS COMPANY, INC. IS PROHIBITED.		MATERIAL Polypropylene UL 94-HB		VISUAL COMMUNICATIONS COMPANY 190 Bosstick Boulevard, Suite 101 San Marcos, CA 92069 USA Phone (760) 560-1300 Fax (760) 560-1301 email vccsales@vcclite.com				
		FINISH SEE NOTES		TITLE: CLIPLITE RNG 165				
		APPROVALS		DATE		SIZE	DWG. NO.	REV
		DRAWN K.HOWARD		2/8/10		A	RNG 165	001
		CHECKED DPZ		2/22/10				
		DO NOT SCALE DRAWING		SCALE: 6:1		SHEET 1 OF 1		

5

4

3

2

1