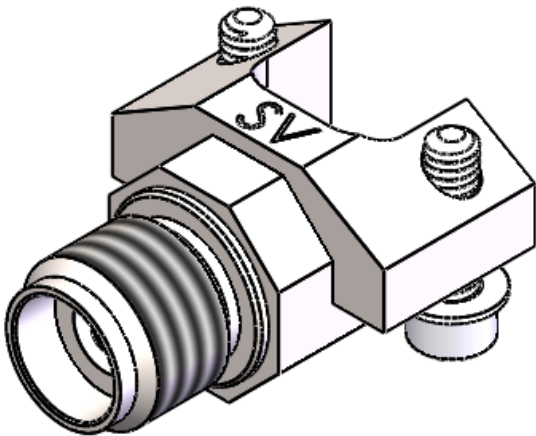
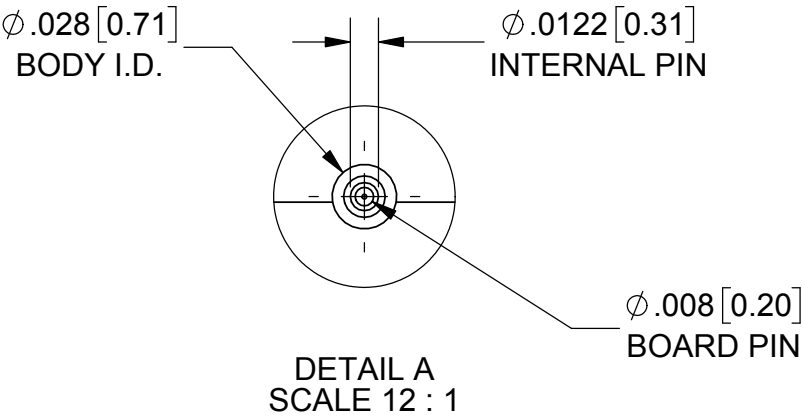
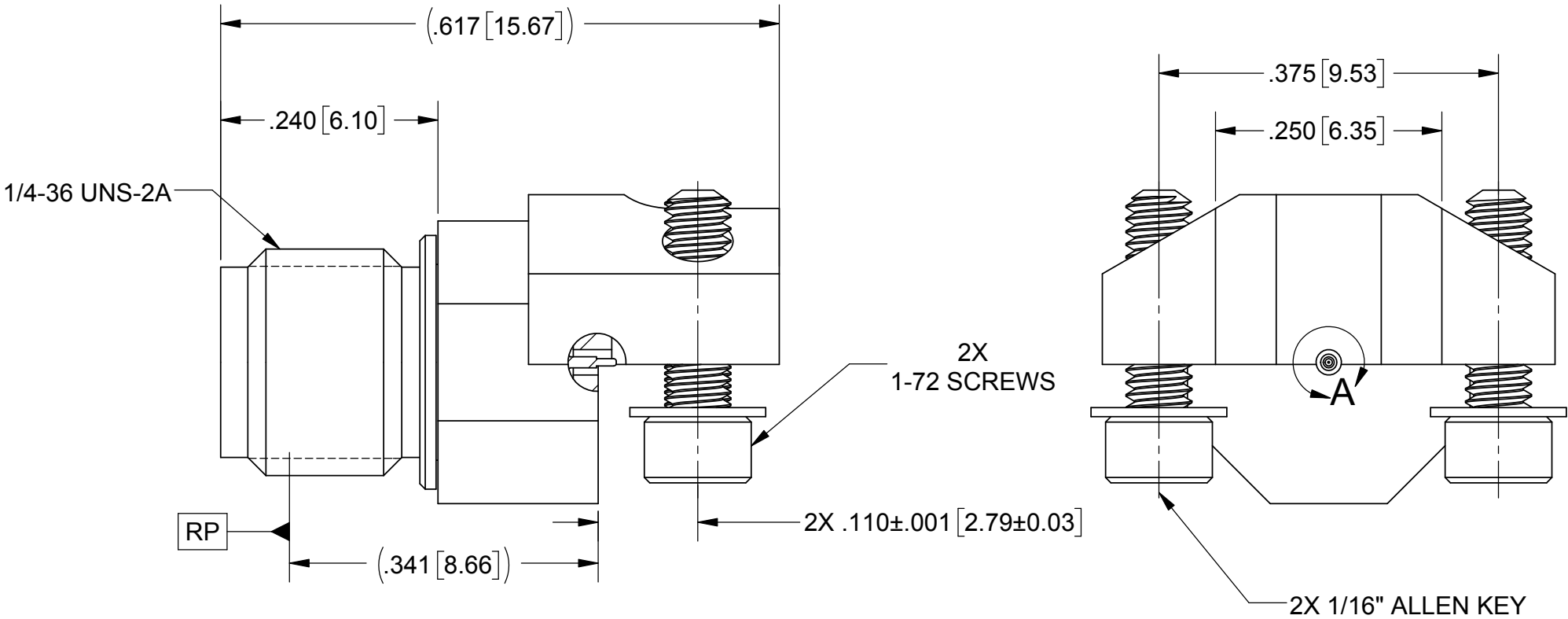
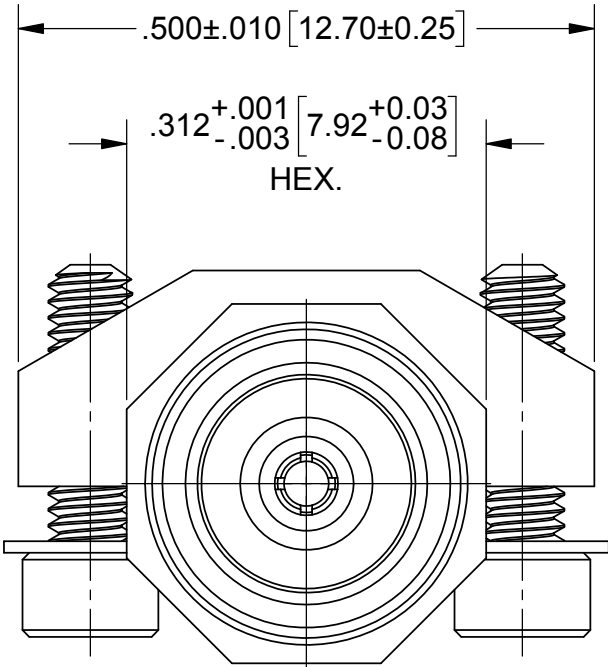


PRODUCT DATA DRAWING

REVISION HISTORY			
REV	DESCRIPTION	DATE	APPROVED
C	DCN 48097	11/18	STW



MATERIAL:

- BODY:

CONTACT:

BEAD:

FINISH:

BODY:
- STAINLESS STEEL PER AMS-5640,  
ALLOY UNS S30300, TYPE 1;  
OR ASTM A582 TYPE 303, COND. A

BERYLLIUM COPPER PER ASTM B196,  
ALLOY No. UNS C17300, TD04

ULTEM 1000 PER ASTM D5205

PASSIVATED PER AMS-2700

- CONTACT:
- GOLD PER ASTM B488, TYPE II,  
CODE C, CLASS 1.27, OVER NICKEL  
PER AMS 2404, .00005" MIN.

PERFORMANCE:

- IMPEDANCE:

FREQ. RANGE:


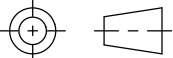
VSWR:
- 50 OHMS

DC TO 40.0 GHz

1.25:1 MAX. DC TO 40.0 GHz

- NOTES:
1.

FOR RECOMMENDED FOOTPRINT FOR YOUR PCB, CONTACT SV MICROWAVE  
SALES DEPARTMENT (sales@svmicro.com, 561-840-1800)

MATERIAL:	SEE NOTES	DIMENSIONS ARE IN INCHES TOLERANCES: FRACTIONAL: $\pm 1/64$ ANGULAR: X° $\pm 1^{\circ}0'$ X°X' $\pm 15'$ DECIMAL: .X $\pm .030$ .XX $\pm .010$ .XXX $\pm .005$ INTERPRET DIMENSIONS AND TOLERANCES PER ASME Y14.5M - 1994	UNLESS OTHERWISE SPECIFIED 1) ALL DIMENSIONS ARE IN INCHES (MILLIMETERS) 2) ALL DIMENSIONS ARE AFTER PLATING. 3) BREAK CORNERS & EDGES .005 R. MAX. 4) CHAM. 1ST & LAST THREADS. 5) SURFACE ROUGHNESS 63-MIL-STD-10. 6) DIA.'S ON COMMON CENTERS TO BE CONCENTRIC WITHIN .005 T.I.R. 7) REMOVE ALL BURRS	<div> 2400 Centrepark West Drive, Suite 100 West Palm Beach, FL 33409</div> <div>TITLE: 2.92mm FEMALE EDGE LAUNCH CONNECTOR WITH Ø.008 LAUNCH PIN</div>
FINISH:	SEE NOTES			
SURFACE AREA:	N/A			
THE INFORMATION CONTAINED IN THIS DRAWING IS THE SOLE PROPERTY OF SV MICROWAVE, INC. ANY REPRODUCTION IN PART OR AS A WHOLE WITHOUT THE WRITTEN PERMISSION OF SV MICROWAVE, INC IS PROHIBITED.		THIRD ANGLE PROJECTION	DRAWN: ELA 10/24/16	SIZE: B CAGE CODE: 95077 DWG. NO. SF1521-60107
			CHECKED: DAL 10/24/16	
			APPROVED: DAL 10/24/16	SCALE: 6:1 SHEET 1 OF 1