



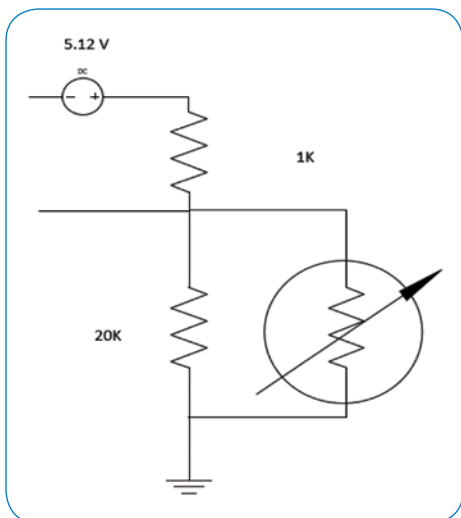
Application Spotlight

Power Budgets / Dissipation

Overview

As electrification continues, power budgets are becoming more and more critical, along with commonly asked questions, such as - How much power does your device consume? What is the max power on your device? These are not trivial questions.

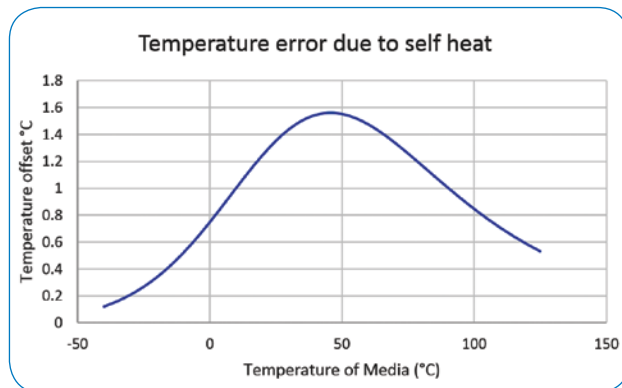
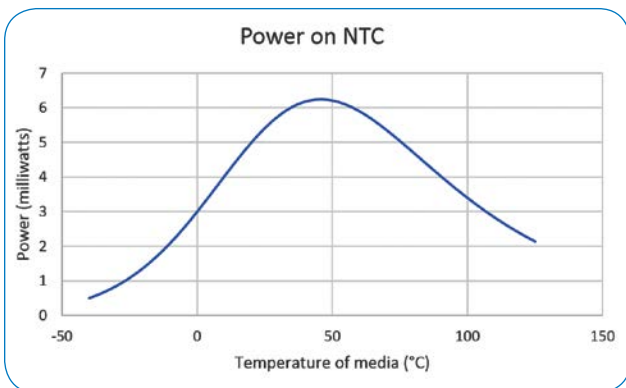
Unlike micro-processors or other active devices, an NTC-based sensor is a passive component, and power consumption depends on other components in the system. In the case of the following circuit, the power curve will reach max power consumption at approximately 45°C.



At this point, power across the NTC will be ~6.24 milliwatts. This will be the value needed for the power budget.

So, what about dissipation? Dissipation is described as the amount of power required to raise the part 1°C. The units are mW/°C. In the case of this sensor, the dissipation is ~4 mW/°C in still air. This means that the part will be self-heated by as much as 1.56°C.

This dissipation changes with media and conditions, so it is critical to understand the application in order to limit temperature sensing errors.



Amphenol
Advanced Sensors

www.amphenol-sensors.com

© 2018 Amphenol Corporation. All Rights Reserved.
Specifications are subject to change without notice.

AAS-930-209A 06/2018

Mouser Electronics

Authorized Distributor

Click to View Pricing, Inventory, Delivery & Lifecycle Information:

[Amphenol:](#)

[GE-1920](#)