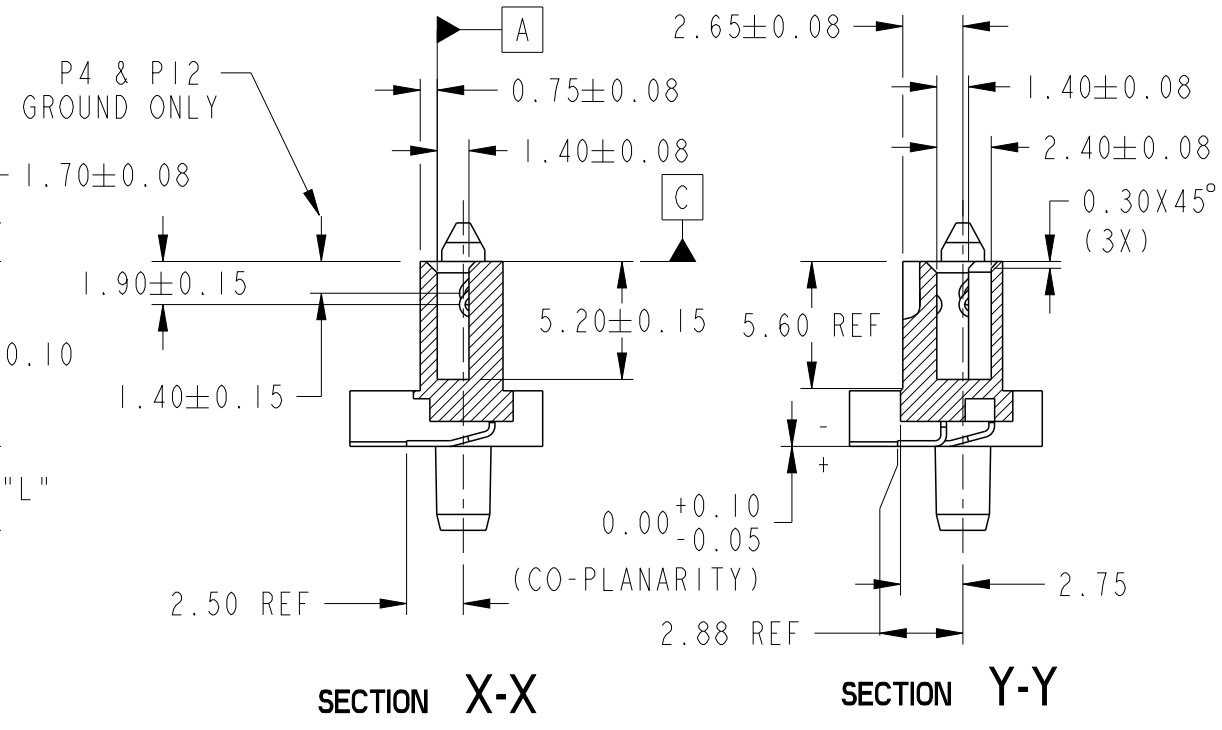
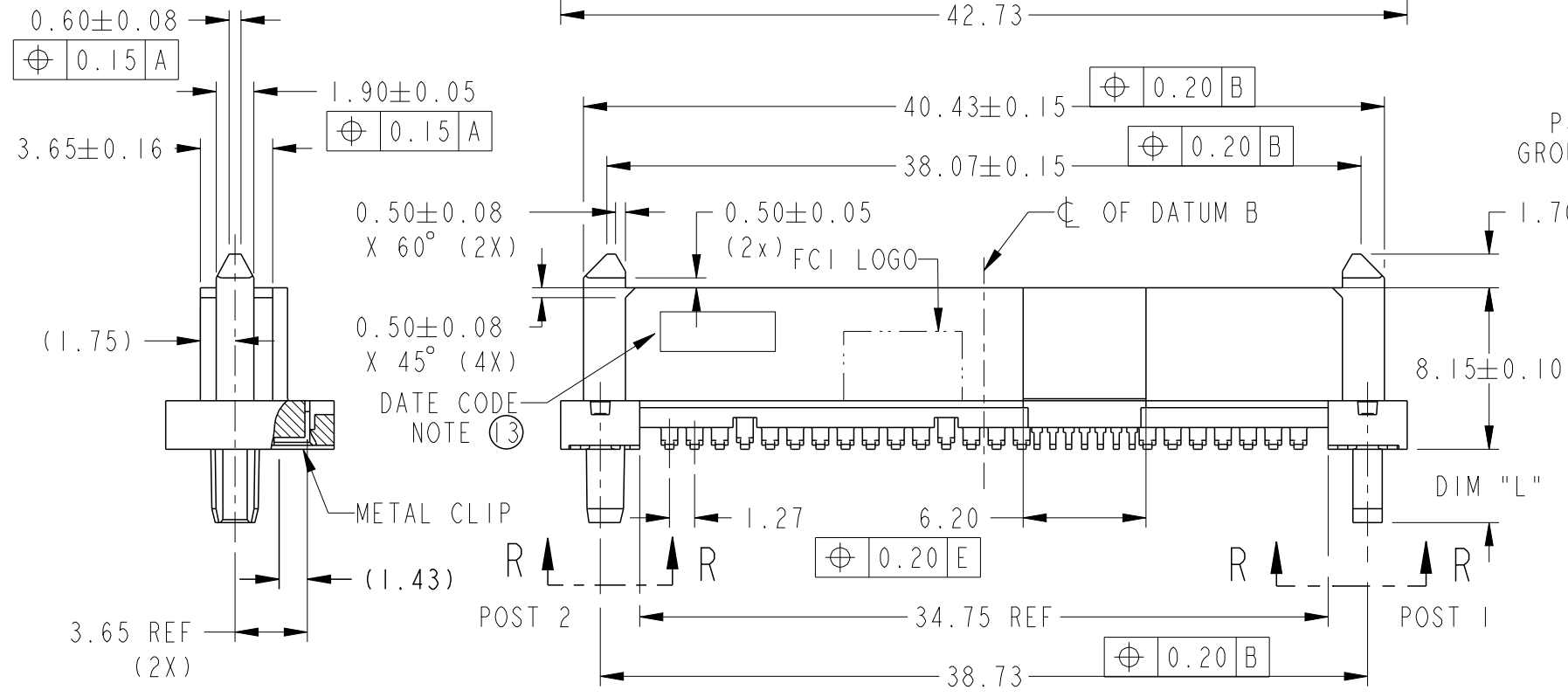
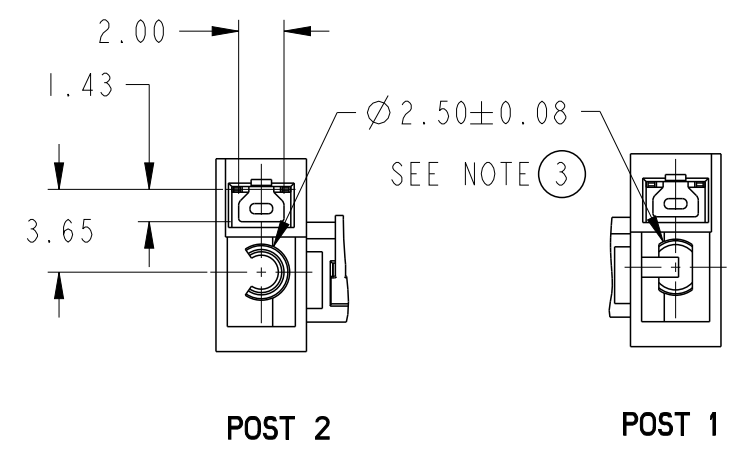
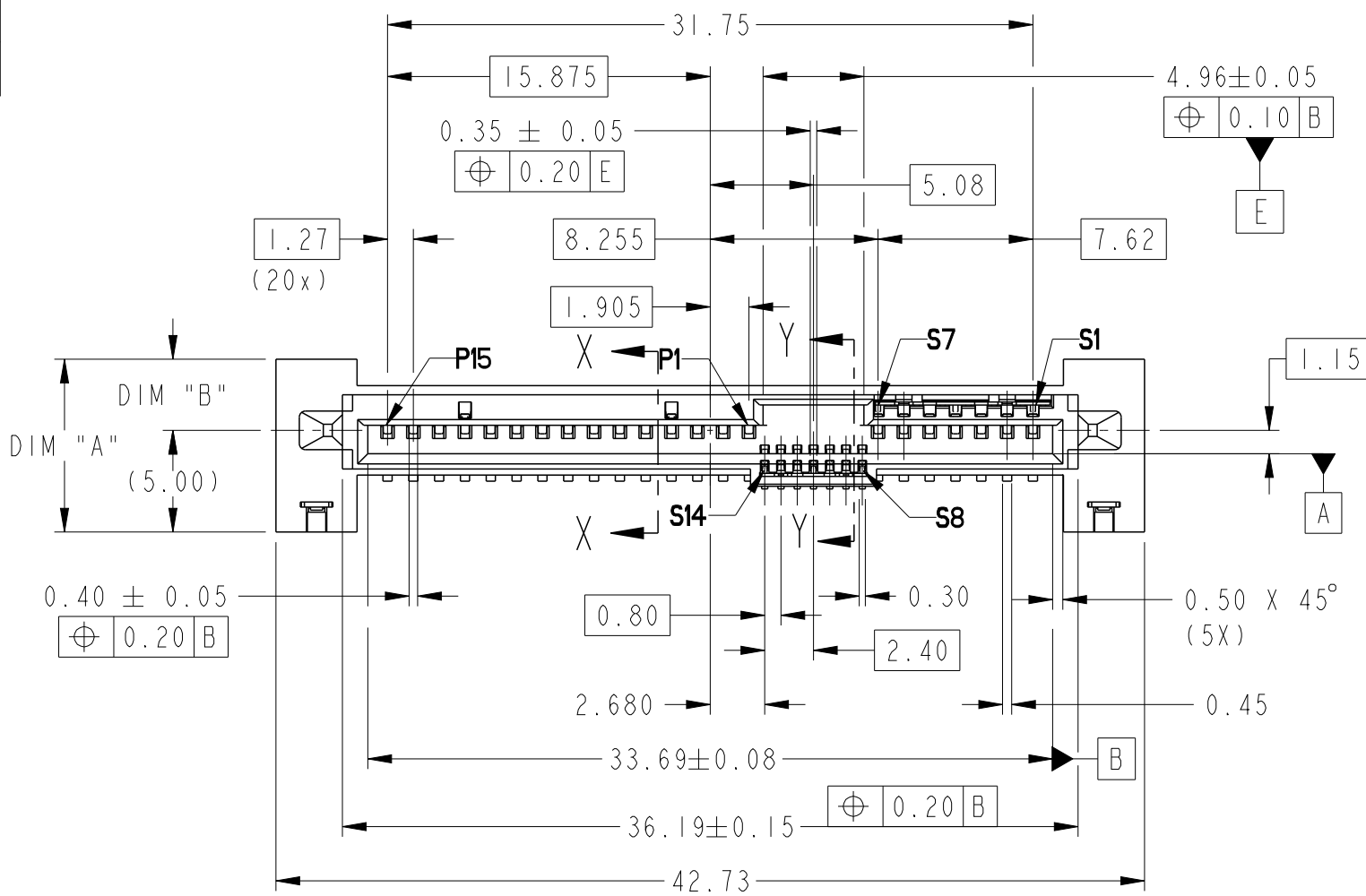


Amphenol
FCi

© 2016 AFCI

PRODUCT NUMBER
SEE TABLE



spec ref	-	dr	Guat-Lian Loo	2013/07/03	projection	MM	size	A3	scale	3:1
tolerance std	ISO 406 ISO 1101	eng	Noorhazlinda	2016/06/14	chr	-	ecn no	ELX-M-24252-2	rel level	Released
surface	linear	appr	Koon-Poh Tay	2016/06/16	product family	SAS	rel level	Released	rev	D
ISO 1302	angular	0°	±2°	Amphenol FCi	12G SAS RECEPTACLE WIDE BASE SMT TYPE ASSY	cat. no.	-	Product - Customer Drw	sheet 1 of 3	

A

B

C

D

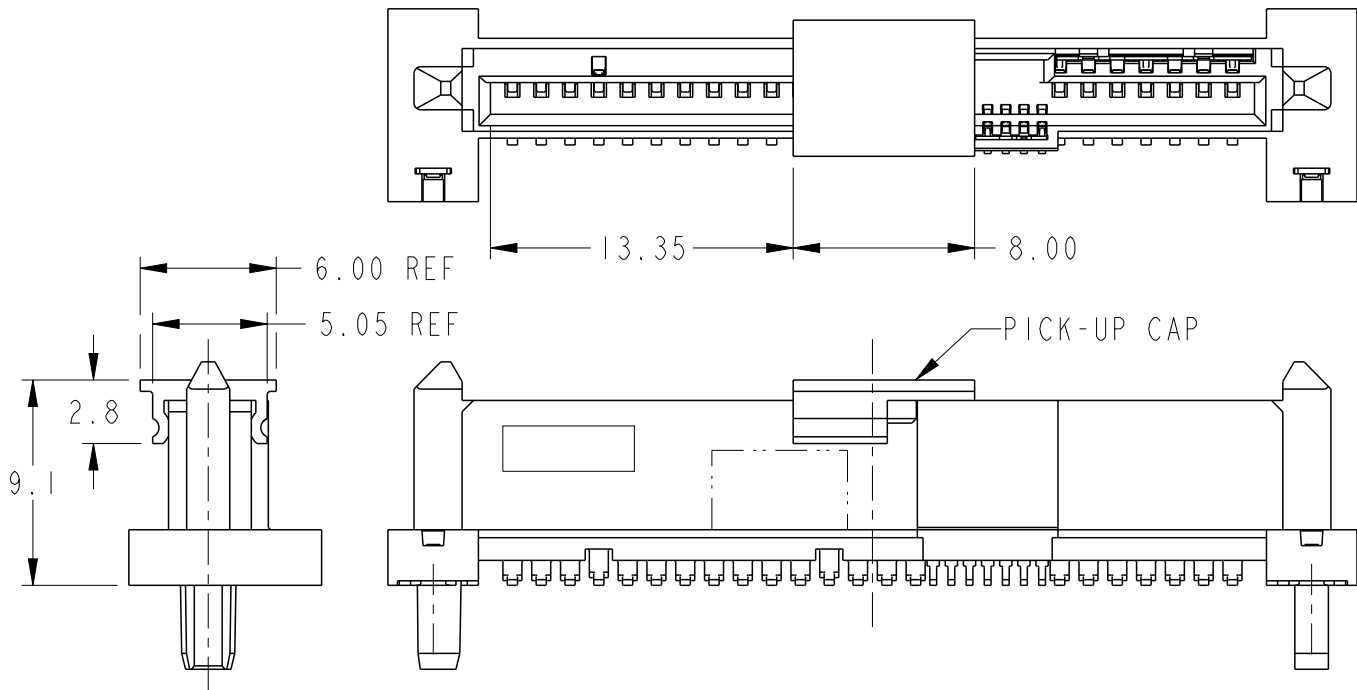
A

B

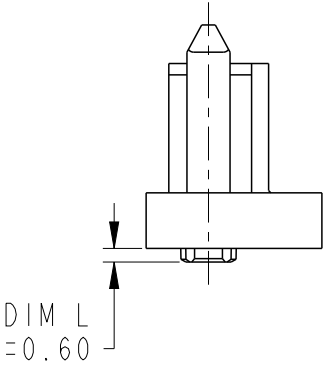
C

D

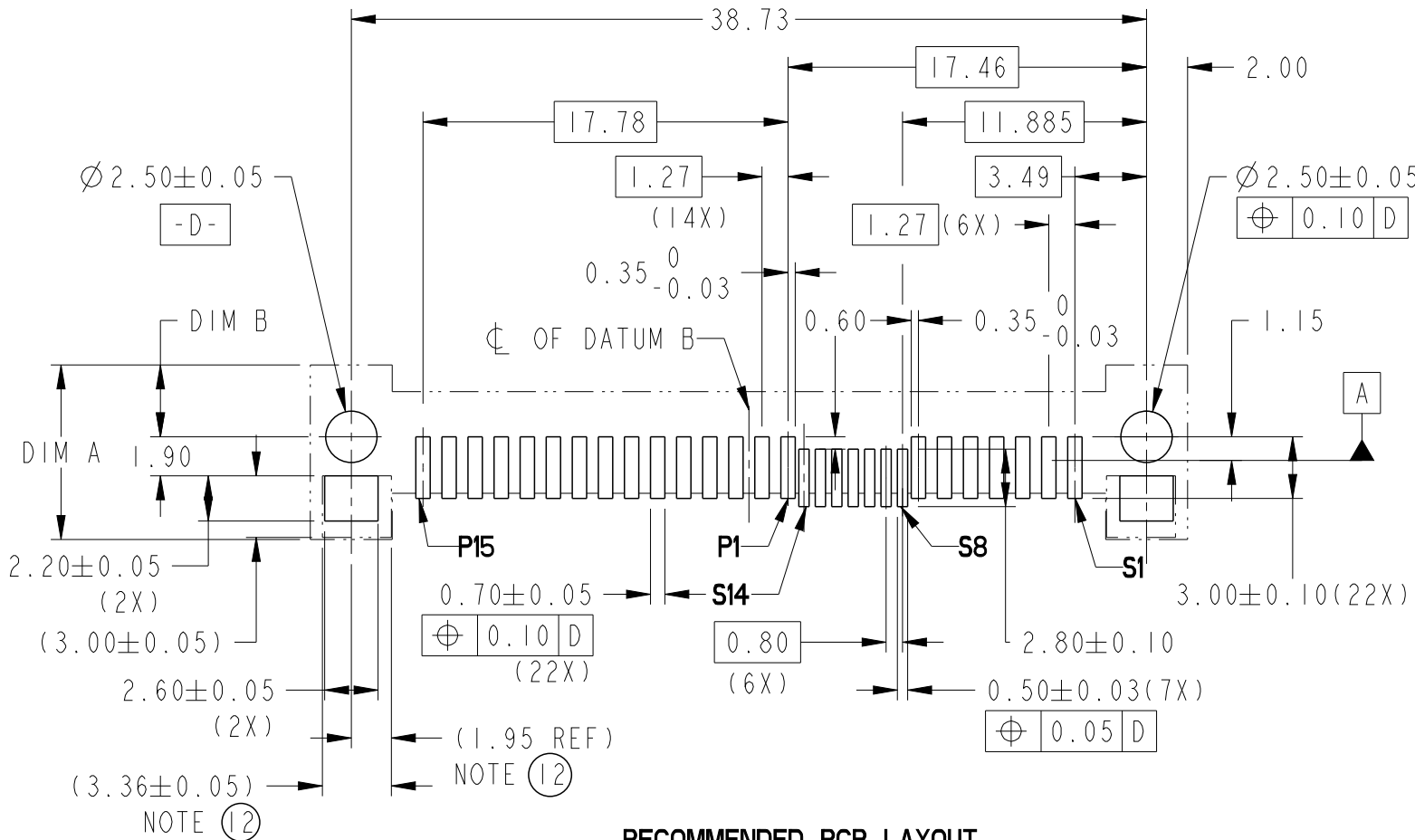
PRODUCT NO	DIM A	DIM B	DIM L	RECOMMENDED P.C. BOARD THICKNESS	PICK-UP CAP	PACKAGING	REMARK
10122272-001LF	8.50	3.50	3.7	4.57mm (0.018")	NO	TRAY	--
10122272-001CLF					YES		
10122272-001C-TRLF					YES	TAPE & REEL	
10122272-002LF	8.50	3.50	2.0	2.54mm (0.100")	NO	TRAY	--
10122272-002CLF					YES		
10122272-002C-TRLF					YES	TAPE & REEL	
10122272-003LF	7.50	2.50	0.6	1.57mm (0.062")	NO	TRAY	--
10122272-003CLF					YES		
10122272-003C-TRLF					YES	TAPE & REEL	



PART WITH PICK-UP CAP, SEE NOTE ⑤




RECOMMENDED SUCTION HEAD SIZE

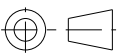
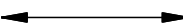


RECOMMENDED PCB LAYOUT
SCALE 3:1

spec ref	-	dr	Guat-Lian Loo	2013/07/03	projection	MM	size	A3	scale	3:1
tolerance std	ISO 406 ISO 1101	eng	Noorhazlinda	2016/06/14	chr	-	ecn no	ELX-M-24252-2	rel level	Released
surface	linear	appr	Koon-Poh Tay	2016/06/16	product family	SAS	rel level	Released	rev	D
ISO 1302	angular	0°	±2°	Amphenol FCI	12G SAS RECEPTACLE WIDE BASE SMT TYPE ASSY	cat. no.	-	Product - Customer Drw	sheet 2 of 3	

PRODUCT NUMBER
SEE TABLE

- NOTES:
- 1. MATERIAL:
 - 1) HOUSING: HIGH TEMP TERMOPLASTIC, UL 94V-0
 - COLOR : BLACK
 - 2) TERMINAL: COPPER ALLOY
 - 3) HOLD DOWN: COPPER ALLOY
 - 2. FINISH:
 - 1) TERMINAL: 30μ" Au PLATING (CONTACT POINT)
 - OVER 50μ" NICKEL
 - 2) SOLDER TAIL: 50μ" MIN Sn OVER 50μ" MIN NICKEL
 - 3) HOLD DOWN: 50μ" MIN Sn OVER 50μ" MIN NICKEL
 - 3. THE DIM. IS MEASURED AT P.C. BOARD SITTING PLANE
 - 4. PER SEF REV 1.3 EXCEPT 0.8mm PITCH BUMP AREA
 - 5. PART WITH PICK-UP CAP, P/N XXXXXXXX-XXXC_LF
 - 6. THE STD PACKAGING IS IN TRAY
 - 7. THE TAPE & REEL PACKAGING, SUFFIX "-TR" ADDED AFTER PRODUCT NUMBER (E.G. XXXXXXXX-XXXC-TRLF)
 - 8. THE HOUSING WILL WITHSTAND EXPOSURE TO 260°C PEAK TEMPERATURE FOR 10 SECONDS IN A CONVECTION, INFRA-RED OR VAPOR PHASE REFLOW OVEN.
 - 9. THIS PRODUCT MEETS EUROPEAN UNION DIRECTIVES AND OTHER COUNTRY REGULATIONS AS DESCRIBED IN GS-47-0004.
 - 10. PART NUMBERS ENDING IN "LF" MEANS FOR NOTE 8 LEAD FREE INDENTIFICATION
 - 11. A  SYMBOL WILL BE NEXT TO ANY DIMENSION, VIEW, OR NOTE WHICH HAS BEEN MODIFIED WITH THE CURRENT DRAWING REVISION.
 - 12. THE GROUND PAD SIZES SHOWN IN () IS THE COMPETITOR DESIGN FOR REF.
 - 13. DATE CODE LOCATION. DATE CODE NO.YYWW (E.G.14225).
 - 14. CORING AT NON FUNCTIONAL AREAS ARE SUBJECT TO CHANGE WITHOUT NOTICES.

spec ref -				dr		Guat-Lian Loo		2013/07/03		projection		MM		size		A3		scale		3:1							
tolerance std		TOLERANCES UNLESS OTHERWISE SPECIFIED				eng		Noorhazelinda		2016/06/14						ecn no		ELX-M-24252-2									
ISO 406						chr		-		-																	
ISO 1101						appr		Koon-Poh Tay		2016/06/16												product family		SAS		rel level	
surface		linear		0.X		± -		Amphenol		FCi		title		12G SAS RECEPTACLE		dwg no		10122272		rev		D					
																								0.XX		±0.20	
																								0.XXX		±0.10	
ISO 1302		angular		0°		±2°				cat. no.		-		Product - Customer Drw		sheet 3 of 3											