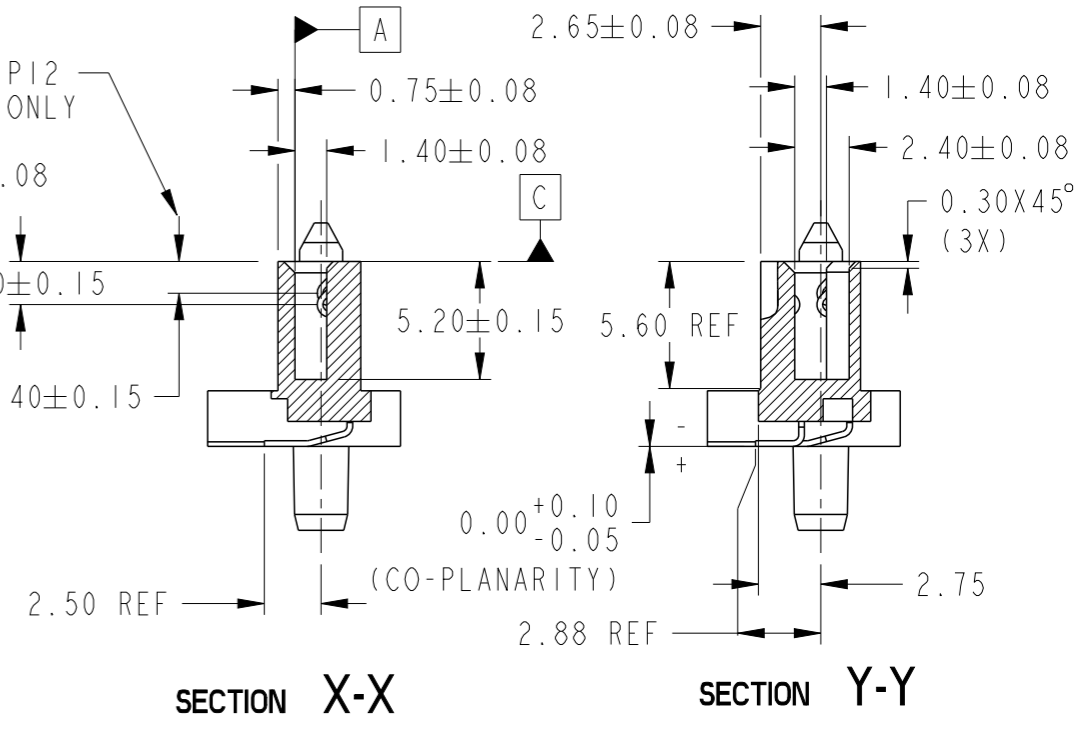
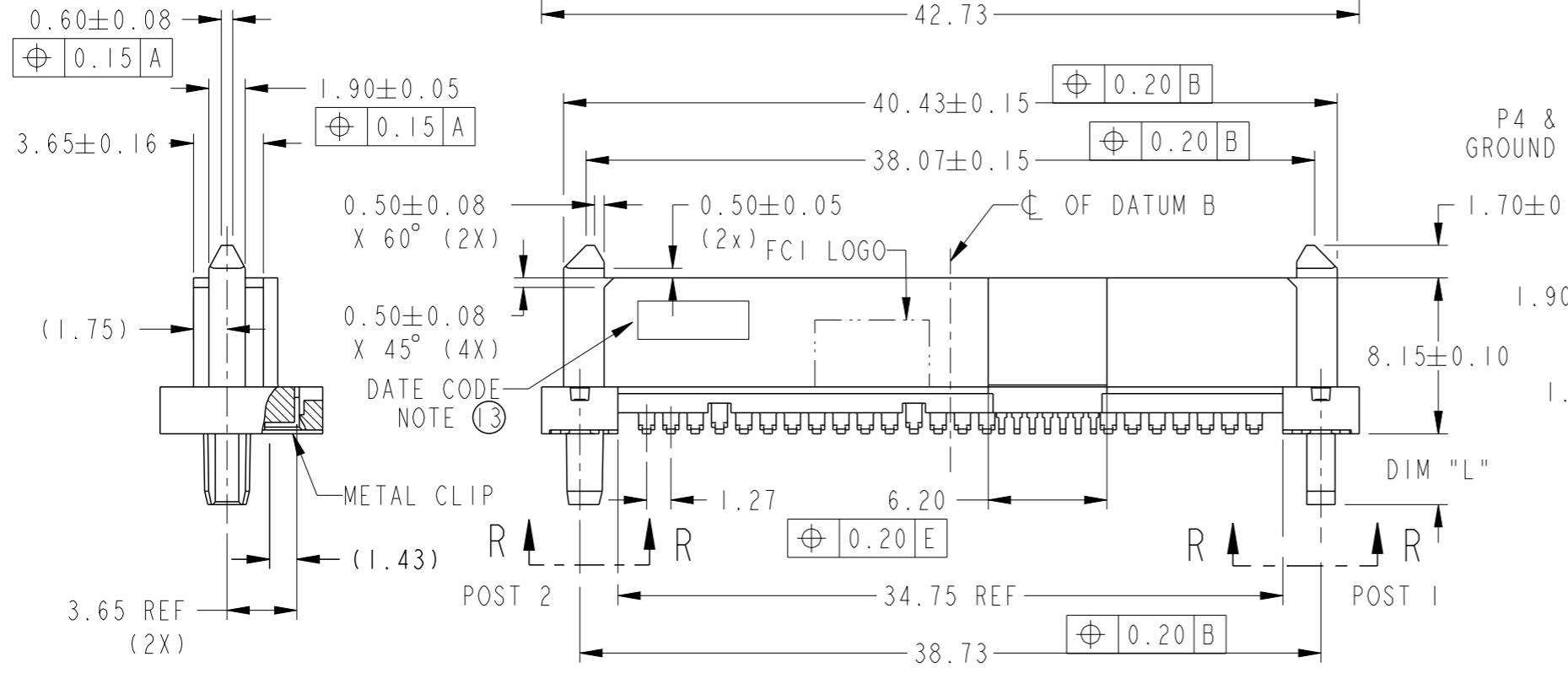
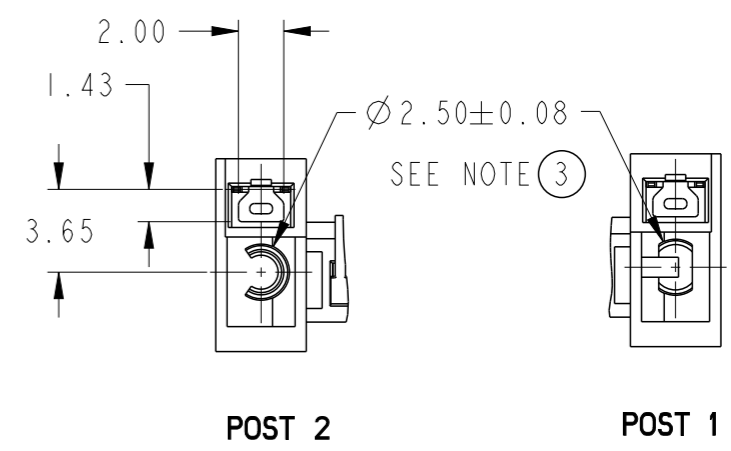
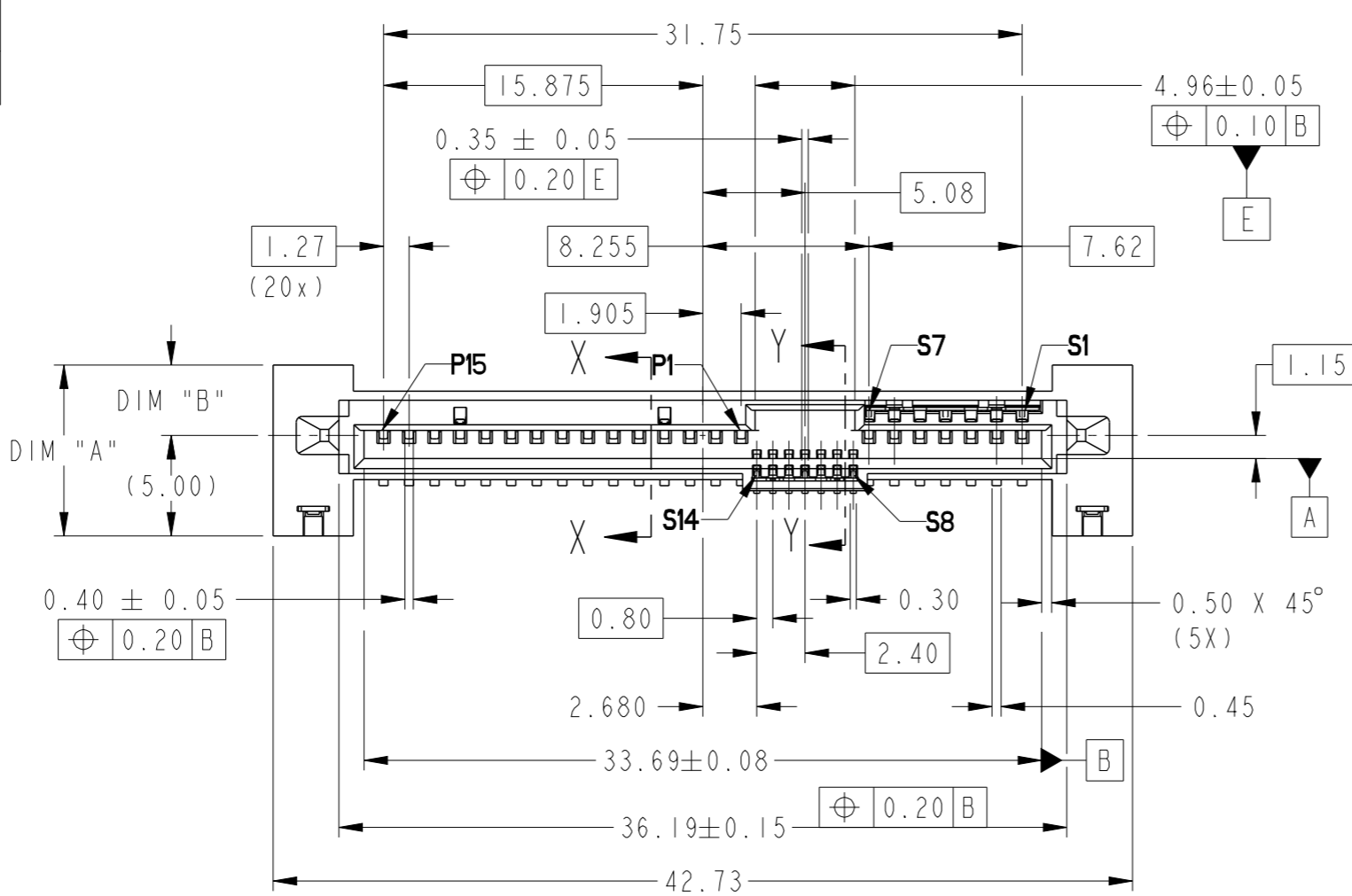


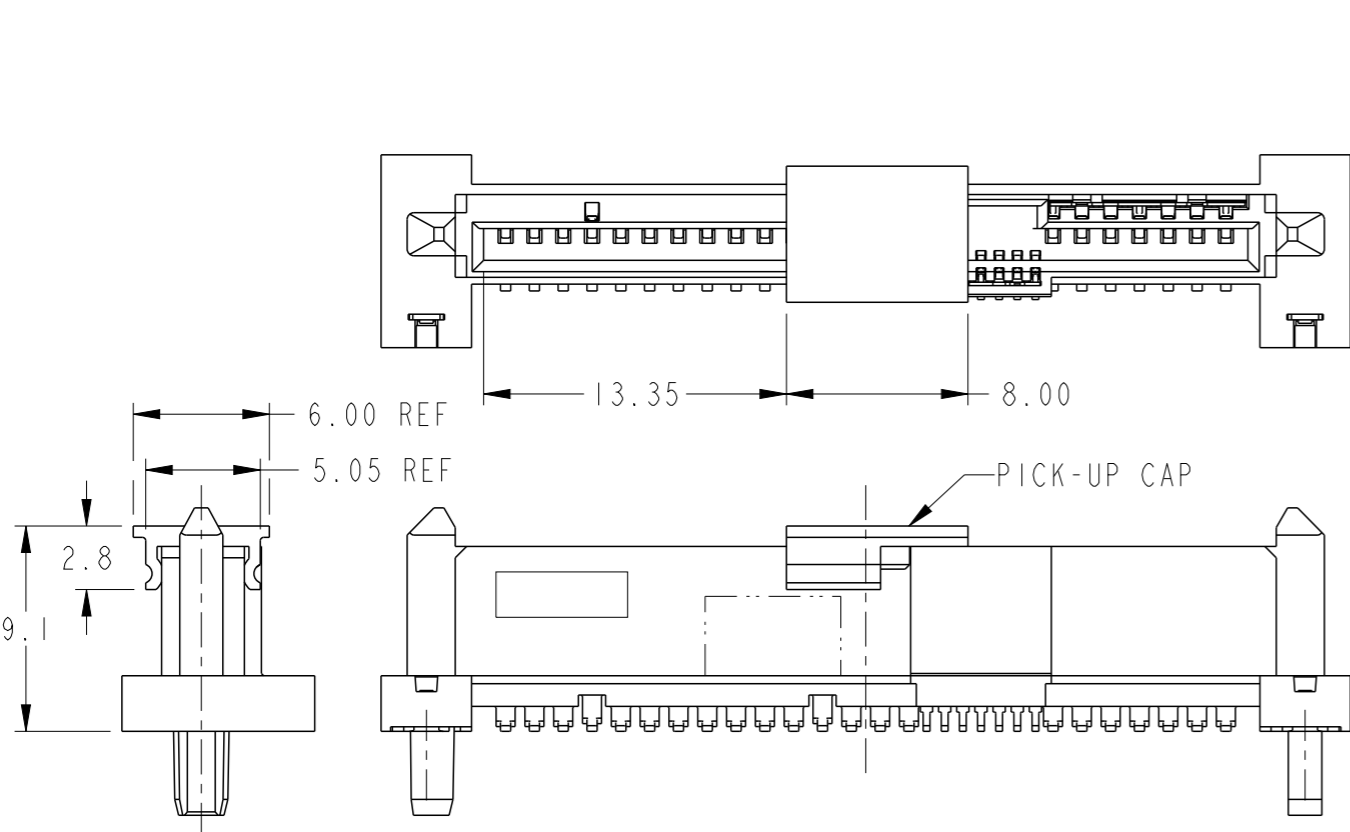
PRODUCT NUMBER
SEE TABLE



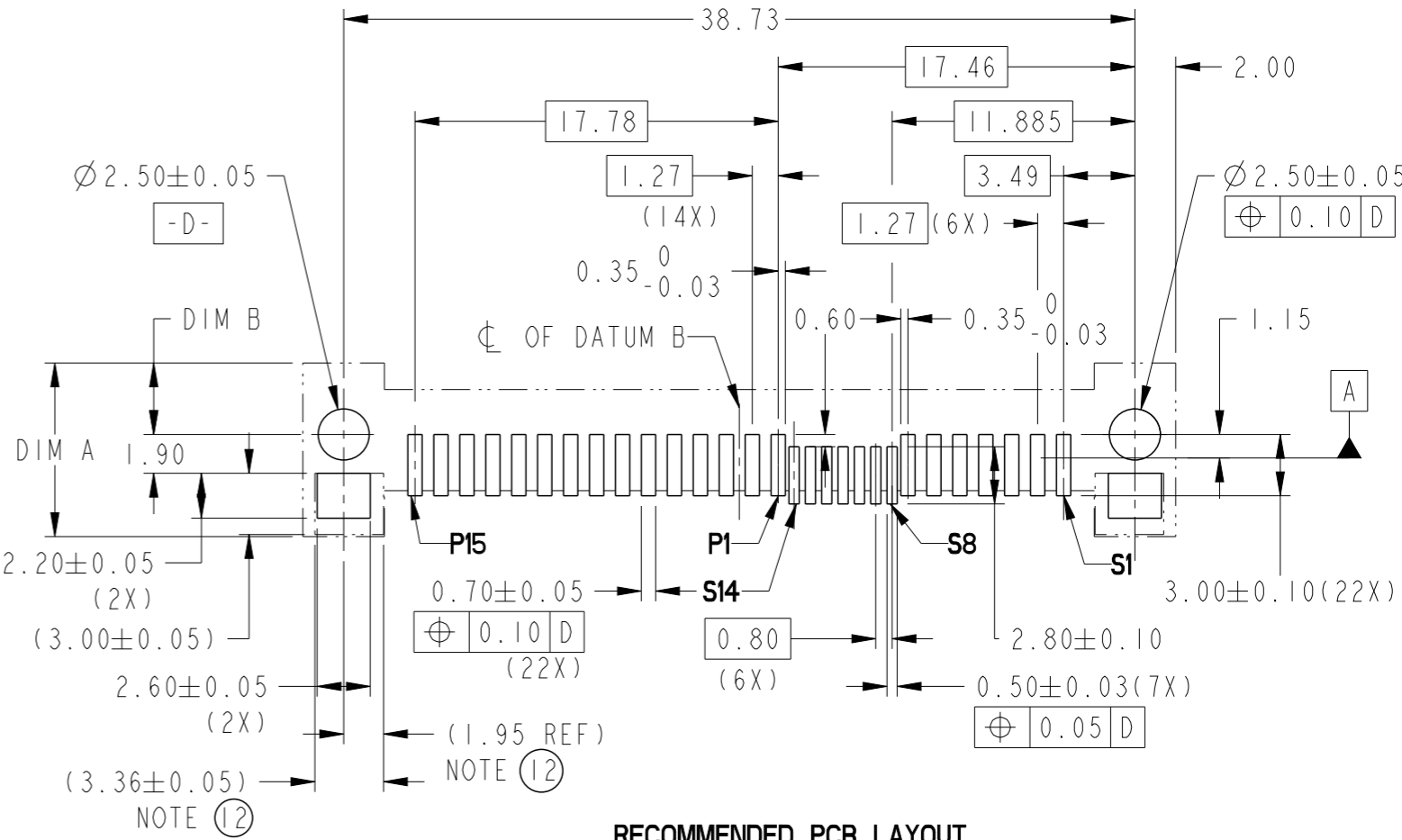
Amphenol FCI
© 2016 AFCI

spec ref	-	dr	Guat-Lian Loo	2013/07/03	projection	MM	size	A3	scale	3:1
tolerance std	ISO 406 ISO 1101	eng	Noorhazlinda	2016/06/14			ecn no	ELX-M-24252-2	rel level	Released
surface	linear	chr	-	apppr			Koon-Poh Tay	2016/06/16		product family
	angular	0°	±°	Amphenol FCI		12G SAS RECEPTACLE		dwg no		10122272
		0.X	±			WIDE BASE SMT TYPE ASSY		rev		D
		0.XX	±0.20			cat. no.		Product - Customer Drw		sheet 1 of 3
		0.XXX	±0.10							
		0°	±2°							

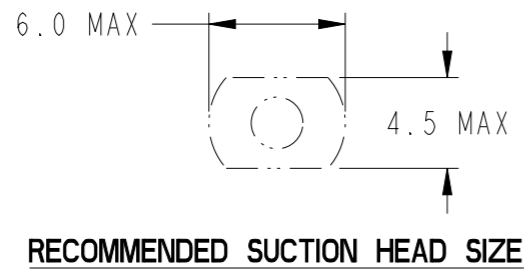
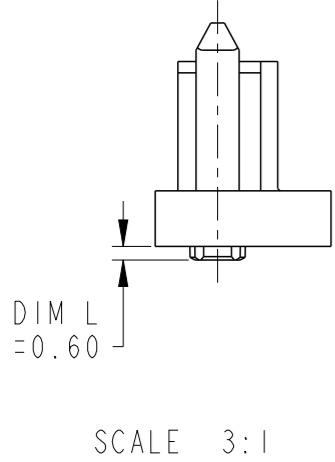
PRODUCT NO	DIM A	DIM B	DIM L	RECOMMENDED P.C. BOARD THICKNESS	PICK-UP CAP	PACKAGING	REMARK
10122272-001LF	8.50	3.50	3.7	4.57mm (0.018")	NO	TRAY	--
YES							
10122272-001C-TRLF					YES	TAPE & REEL	
10122272-002LF	8.50	3.50	2.0	2.54mm (0.100")	NO	TRAY	--
10122272-002CLF					YES		
10122272-002C-TRLF					YES	TAPE & REEL	
10122272-003LF	7.50	2.50	0.6	1.57mm (0.062")	NO	TRAY	--
10122272-003CLF					YES		
10122272-003C-TRLF					YES	TAPE & REEL	



PART WITH PICK-UP CAP, SEE NOTE (5)



RECOMMENDED PCB LAYOUT
SCALE 3:1



spec ref	-	dr	Guat-Lian Loo	2013/07/03	projection	MM	size	A3	scale	3:1	
tolerance std	ISO 406 ISO 1101	eng	Noorhazelinda	2016/06/14	product family	SAS	ecn no	ELX-M-24252-2	rel level	Released	
surface	linear	chr	-	appr		Koon-Poh Tay	2016/06/16	rel level	Released		
	angular	0°	±0°	Amphenol FCI		12G SAS RECEPTACLE		dwg no	10122272	rev	D
		0°	±2°	cat. no.		-	Product - Customer Drw	sheet 2 of 3			

PRODUCT NUMBER

SEE TABLE

NOTES:

- 1. MATERIAL:
 - 1) HOUSING: HIGH TEMP TERMOPLASTIC, UL 94V-0
 - COLOR : BLACK
 - 2) TERMINAL: COPPER ALLOY
 - 3) HOLD DOWN: COPPER ALLOY
- 2. FINISH:
 - 1) TERMINAL: 30μ" Au PLATING (CONTACT POINT)
 - OVER 50μ" NICKEL
 - 2) SOLDER TAIL: 50μ" MIN Sn OVER 50μ" MIN NICKEL
 - 3) HOLD DOWN: 50μ" MIN Sn OVER 50μ" MIN NICKEL
- ③ THE DIM. IS MEASURED AT P.C. BOARD SITTING PLANE
- 4. PER SEF REV 1.3 EXCEPT 0.8mm PITCH BUMP AREA
- ⑤ PART WITH PICK-UP CAP, P/N XXXXXXXX-XXXC_LF
- 6. THE STD PACKAGING IS IN TRAY
- 7. THE TAPE & REEL PACKAGING, SUFFIX "-TR" ADDED AFTER PRODUCT NUMBER (E.G. XXXXXXXX-XXXC-TRLF)
- 8. THE HOUSING WILL WITHSTAND EXPOSURE TO 260°C PEAK TEMPERATURE FOR 10 SECONDS IN A CONVECTION, INFRA-RED OR VAPOR PHASE REFLOW OVEN.
- ⑨ THIS PRODUCT MEETS EUROPEAN UNION DIRECTIVES AND OTHER COUNTRY REGULATIONS AS DESCRIBED IN GS-47-0004.
- ⑩ PART NUMBERS ENDING IN "LF" MEANS FOR NOTE 8 LEAD FREE IDENTIFICATION
- 11. A Δ SYMBOL WILL BE NEXT TO ANY DIMENSION, VIEW, OR NOTE WHICH HAS BEEN MODIFIED WITH THE CURRENT DRAWING REVISION.
- ⑫ THE GROUND PAD SIZES SHOWN IN () IS THE COMPETITOR DESIGN FOR REF.
- ⑬ DATE CODE LOCATION. DATE CODE NO.YYWW (E.G.14225).
- 14. CORING AT NON FUNCTIONAL AREAS ARE SUBJECT TO CHANGE WITHOUT NOTICES.

Amphenol FCI

© 2016 AFCI

spec ref -		dr	Guat-Lian Loo	2013/07/03	projection	MM	size	A3	scale	3:1
tolerance std		eng	Noorhazlinda	2016/06/14		← →	ecn no		ELX-M-24252-2	
ISO 406 ISO 1101		chr	-	-			rel level		Released	
surface		appr	Koon-Poh Tay	2016/06/16	product family		SAS		rev	
linear		Amphenol FCI			12G SAS RECEPTACLE WIDE BASE SMT TYPE ASSY		dwg no		10122272	
angular										
ISO 1302		cat. no.		-		Product - Customer Drw		sheet 3 of 3		